

UNITED STATES
DEPARTMENT OF THE INTERIOR
BUREAU OF LAND MANAGEMENT

SUBMIT IN TRIPLICATE
(Other instructions on
reverse side)

FORM APPROVED
OMB NO. 1004-0136
Expires February 28, 1995

APPLICATION FOR PERMIT TO DRILL OR DEEPEN

1a. TYPE OF WORK

Drill



Deepen



b. TYPE OF WELL

Oil Well



Gas Well



Other

Single Zone



Multiple Zone



2. NAME OF OPERATOR

Mallon Oil Company

3. ADDRESS AND TELEPHONE NO.

P.O. Box 2797

Durango, CO 81302

(970) 382-9100

4. LOCATION OF WELL (Report location clearly and in accordance with any State requirements *)

At surface

1440' FSL and 1685' FEL (NW/SE) Unit J

At proposed prod. zone 1440' FSL and 1685' FEL (NW/SE) Unit J

14. DISTANCE IN MILES AND DIRECTION FROM NEAREST TOWN OR POST OFFICE *

56 miles east of Bloomfield, New Mexico

15. DISTANCE FROM PROPOSED *

LOCATION TO NEAREST

PROPERTY OR LEASE LINE, FT.

1685'

(Also to nearest drlg. unit line, if any)

18. DISTANCE FROM PROPOSED LOCATION*

TO NEAREST WELL, DRILLING, COMPLETED,

OR APPLIED FOR, ON THIS LEASE, FT.

4200'

21. ELEVATIONS (SHOW WHETHER DF, RT, GR, Etc.)

7359' GR

16. NO. OF ACRES IN LEASE

39,360

17. NO. OF ACRES ASSIGNED
TO THIS WELL

160

20. ROTARY OR CABLE TOOLS

Rotary

22. APPROX. DATE WORK WILL START

12/10/00

23. PROPOSED CASING AND CEMENTING PROGRAM

SIZE OF HOLE	GRADE, SIZE OF CASING	WEIGHT PER FOOT	SETTING DEPTH	QUANTITY OF CEMENT
12-1/4"	8-5/8"	24#	250'	Circulate to surface
7-7/8"	5-1/2"	15.5#	4000'	570 sks circ. To surface

Mallon Oil Company proposes to drill to a depth sufficient to test the Pictured Cliffs formation. If productive, 5-1/2" casing will be cemented at TD. If non-productive, the well will be plugged and abandoned in a manner consistent with Federal regulations. Specific programs as per on-shore Oil and Gas Order No. 1 are outlined in the following attachments:

Drilling Program

Exhibit 1: Blow Out Preventor Equipment/Plan

Exhibit A: Location and Elevation Plat

Exhibit B: Roads and Pipelines

Exhibit C: One Mile Radius Map

Exhibit D: Drilling Site Layout

Exhibit E: Production Facilities

Exhibit F: H2S Contingency Plan

Exhibit G: Environmental Assessment

IN ABOVE SPACE DESCRIBE PROPOSED PROGRAM: If proposal is to deepen, give data on present productive zone and proposed new productive zone. If proposal is to drill or deepen directionally, give pertinent data on subsurface locations and measured and true vertical depths. Give blowout preventer program, if any.

SIGNED:

Terry Lindeman

TITLE: Operations Superintendent

DATE 11/08/00

(This space for Federal or State office use)

PERMIT NO.

APPROVAL DATE

Application approval does not warrant or certify that the applicant holds legal or equitable title to those rights in the subject lease which would entitle the applicant to conduct operations thereon.

CONDITIONS OF APPROVAL, IF ANY:

APPROVED BY

S/S W Anderson

TITLE

Asst. Field Mgr

DATE

FEB 06 2001

*See Instructions On Reverse Side

Title 18 U.S.C. Section 1001, makes it a crime for any person knowingly and willfully to make to any department or agency of the United States any false, fictitious or fraudulent statements or representations as to any matter within its jurisdiction.

CONFIDENTIAL

2-M SYSTEM

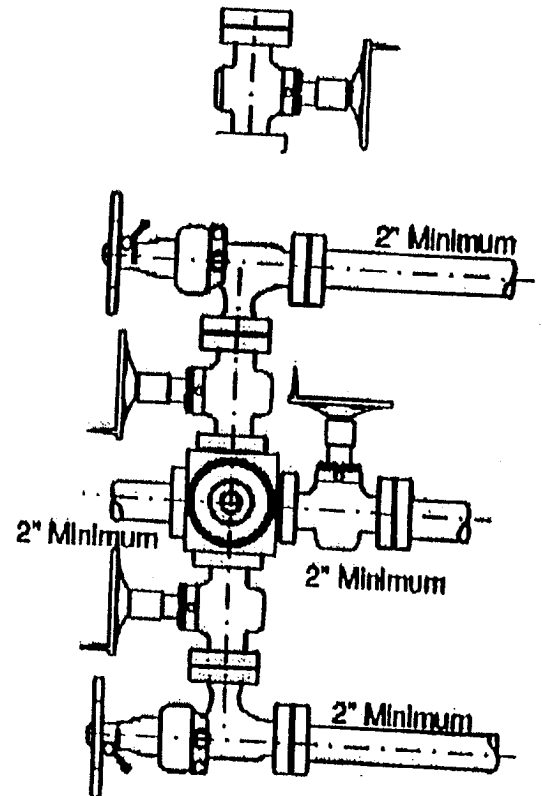
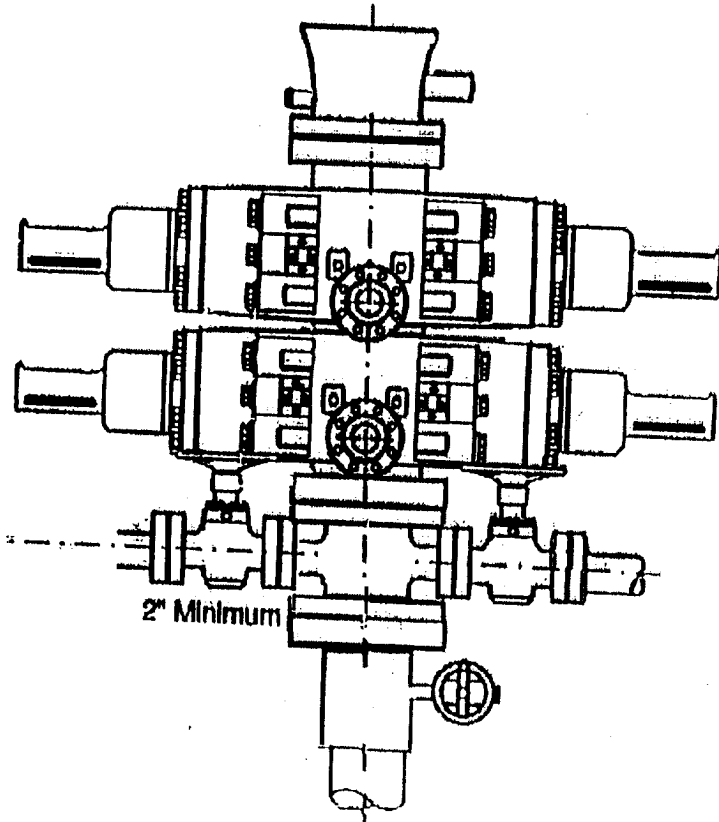


Exhibit 1

DISTRICT I
P.O. Box 1980, Hobbs, N.M. 88241-1980

DISTRICT II
P.O. Drawer DD, Artesia, N.M. 88211-0719

DISTRICT III
1000 Rio Brazos Rd., Aztec, N.M. 87410

DISTRICT IV
PO Box 2088, Santa Fe, NM 87504-2088

State of New Mexico
Energy, Minerals & Natural Resources Department

OIL CONSERVATION DIVISION
P.O. Box 2088
Santa Fe, NM 87504-2088

Form C-102
Revised February 21, 1994
Instructions on back
Submit to Appropriate District Office
State Lease - 4 Copies
Fee Lease - 3 Copies

☐ AMENDED REPORT

WELL LOCATION AND ACREAGE DEDICATION PLAT

*API Number 30-039-26664		*Pool Code 72400	*Pool Name East Blanco; Pictured Cliffs
*Property Code 00024249	*Property Name JICARILLA 30-03-36		*Well Number 2
*GRID No. 13825	*Operator Name MALLON OIL COMPANY		*Elevation 7359'

10 Surface Location

UL or lot no. J	Section 36	Township 30-N	Range 3-W	Lot Idn	Feet from the 1440	North/South line SOUTH	Feet from the 1685	East/West line EAST	County RIO ARriba
--------------------	---------------	------------------	--------------	---------	-----------------------	---------------------------	-----------------------	------------------------	----------------------

11 Bottom Hole Location If Different From Surface

UL or lot no.	Section	Township	Range	Lot Idn	Feet from the	North/South line	Feet from the	East/West line	County
160.5		Joint or Infill		Consolidation Code		Order No.			

NO ALLOWABLE WILL BE ASSIGNED TO THIS COMPLETION UNTIL ALL INTERESTS HAVE BEEN CONSOLIDATED
OR A NON-STANDARD UNIT HAS BEEN APPROVED BY THE DIVISION

16	FD. MARKED STONE AND BEARING TREE		17 OPERATOR CERTIFICATION I hereby certify that the information contained herein is true and complete to the best of my knowledge and belief Signature Terry Lindeman Printed Name Operations Superintendent Title 11/08/00 Date
LAT. = 36-45-56 N. LONG. = 107-05-55 W.		18 SURVEYOR CERTIFICATION I hereby certify that the well location shown on this plat was plotted from field notes of actual surveys made by me or under my supervision, and that the same is true and correct to the best of my belief. Date of Survey Signature and Seal of Professional Surveyor: Certificate Number	9-2 ROYAL ARCH NEW MEXICO 8894 PROFESSIONAL LAND SURVEYOR
FD. MARKED STONE SET PIN & CAP "LS 8894"		S 89-59-29 W 2627.6'	FD. U.S.G.L.O. BC. 1917

MALLON OIL COMPANY

JICARILLA 30-03-36 #2

SEC. 36, T-30-N, R-3-W, N.M.P.M.

RIO ARriba COUNTY, NEW MEXICO

1440' FSL 1685' FEL

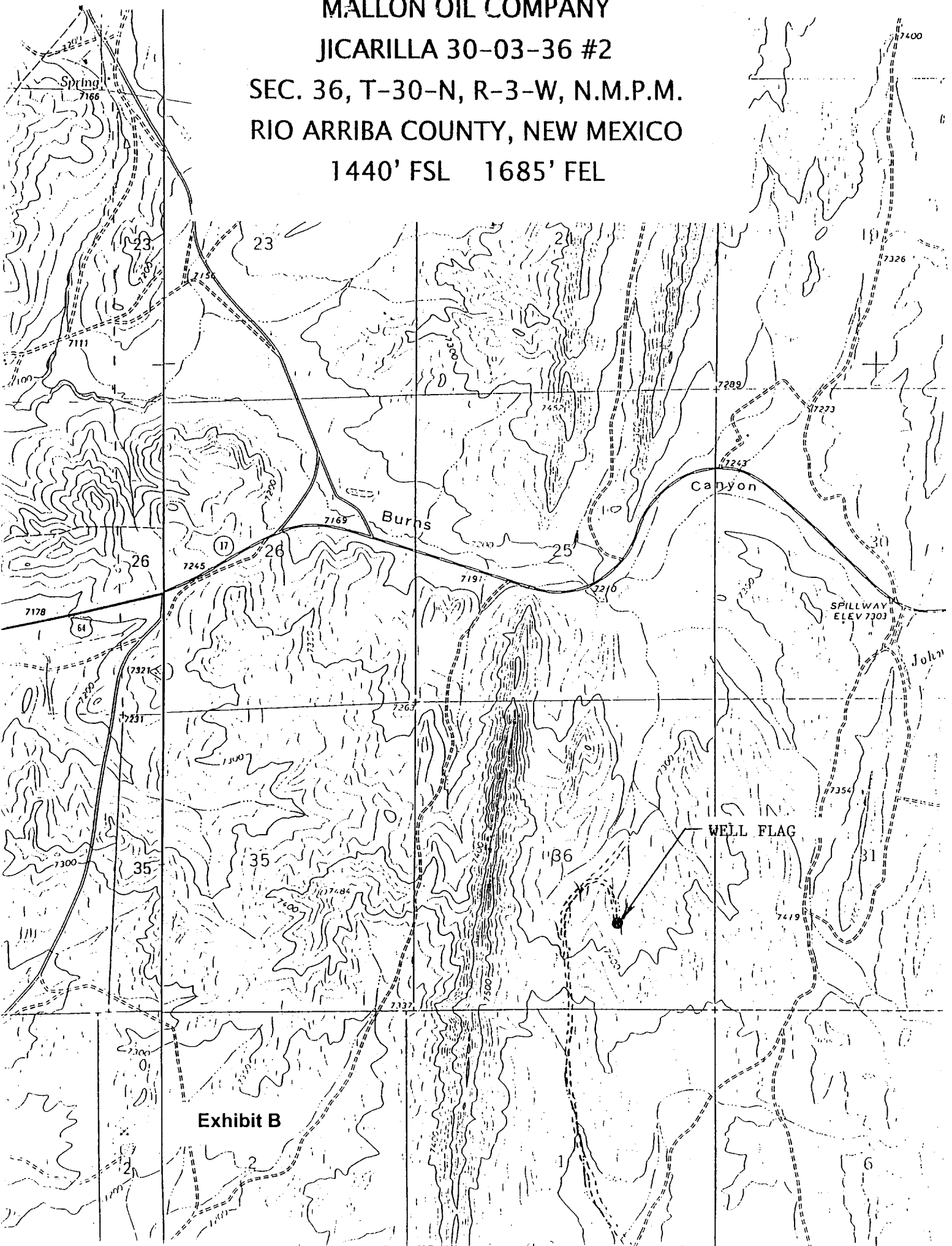


Exhibit B