



2040 South Pacheco, Santa Fe, NM 87505

OIL CONSERVATION DIVISION  
2040 South Pacheco  
Santa Fe, NM 87505

Form C-1  
Revised October 18, 19  
Instructions on ba  
Appropriate District Offi  
State Lease - 4 Copi  
Fee Lease - 3 Copi

2001 JUN 26 AM 8:34

☐ AMENDED REPORT

30-035-26769 * API Number		72319 * Pool Code	Blanco Mesaverde * Pool Name
009259 * Property Code	SAN JUAN 31-6 UNIT * Property Name		6 M * Well Number
017654 * OGRID No.	PHILLIPS PETROLEUM COMPANY * Operator Name		6328 * Elevation

UL or lot no.	Section	Township	Range	Lot Idn	Feet from the	North/South line	Feet from the	East/West line	County
K	1	30N	7W		1615'	SOUTH	2490'	WEST	RIO ARriba

[illegible]

<sup>12</sup> Dedicated Acres	<sup>13</sup> Joint or Infill	<sup>14</sup> Consolidation Code	<sup>15</sup> Order No.
319.10 W/2	Y	U	

NO ALLOWABLE WILL BE ASSIGNED TO THIS COMPLETION UNTIL ALL INTERESTS HAVE BEEN CONSOLIDATED OR A NON-STANDARD UNIT HAS BEEN APPROVED BY THE DIVISION

16 WEST 5280.00'

8 7 6 5

5260.20'

5280.00'

SECTION 1

SF-079000  
2558.8 acres

S00°06'E 2490'

1615'

N89°52'W 5287.92'

NORTH

RECEIVED  
AUG 2001  
OIL CON. DIV.  
DIST. 3

I hereby certify that the information contained herein is true and complete to the best of my knowledge and belief

*Patsy Cleghorn*  
Signature

Patsy Clugston

Printed Name \_\_\_\_\_

Sr. Regulatory/Proration Clerk  
Title

June 21, 2001

Date \_\_\_\_\_

I hereby certify that the well location shown on this plat was plotted from field notes of actual surveys made by me or under my supervision, and that the same is true and correct to the best of my belief.

04/18/01

Date of Survey \_\_\_\_\_

Signature and Seal of Professional Surveyor.

Certificate Number

District I  
181 Box 1980, Hobbs, NM 88241-1980  
District II  
811 South First, Artesia, NM 88210  
District III  
1000 Rio Brazos Rd., Aztec, NM 87410  
District IV  
2040 South Pacheco, Santa Fe, NM 87505

State of New Mexico  
Energy, Minerals & Natural Resources Department

OIL CONSERVATION DIVISION  
2040 South Pacheco  
Santa Fe, NM 87505

Form C-10  
Revised October 18, 1997  
Instructions on back  
Submit to Appropriate District Office  
State Lease - 4 Copies  
Fee Lease - 3 Copies

☐ AMENDED REPORT

WELL LOCATION AND ACREAGE DEDICATION PLAT

1 API Number		2 Pool Code 71599		3 Pool Name Basin Dakota	
4 Property Code 009259		5 Property Name SAN JUAN 31-6 UNIT			
7 OGRID No. 017654		8 Operator Name PHILLIPS PETROLEUM COMPANY			
		9 Well Number 6M		10 Elevation 6328	

10 Surface Location

UL or lot no. K	Section 1	Township 30N	Range 7W	Lot Idn	Feet from the 1615'	North/South line SOUTH	Feet from the 2490'	East/West line WEST	County RIO ARriba
--------------------	--------------	-----------------	-------------	---------	------------------------	---------------------------	------------------------	------------------------	----------------------

11 Bottom Hole Location If Different From Surface

UL or lot no. K	Section	Township	Range	Lot Idn	Feet from the	North/South line	Feet from the	East/West line	County
12 Dedicated Acres 319.10 W/2		13 Joint or Infill Y		14 Consolidation Code U		15 Order No.			

NO ALLOWABLE WILL BE ASSIGNED TO THIS COMPLETION UNTIL ALL INTERESTS HAVE BEEN CONSOLIDATED OR A NON-STANDARD UNIT HAS BEEN APPROVED BY THE DIVISION

<p>16 WEST 5280.00'</p> <p>8 7 6 5</p> <p>2 2</p> <p>5260.20'</p> <p>SECTION 1</p> <p>SF-079000 2558.8 acres</p> <p>S00°06'E 2490'</p> <p>1615'</p> <p>N89°52'W 5287.92'</p>				<p>17 OPERATOR CERTIFICATION</p> <p>I hereby certify that the information contained herein is true and complete to the best of my knowledge and belief</p> <p><i>Patsy Clugston</i> Signature Patsy Clugston Printed Name Sr. Regulatory/Proration Clerk Title June 18, 2001 Date</p>	
<p>NORTH</p>				<p>18 SURVEYOR CERTIFICATION</p> <p>I hereby certify that the well location shown on this plat was plotted from field notes of actual surveys made by me or under my supervision, and that the same is true and correct to the best of my belief.</p> <p>04/18/01 Date of Survey Signature and Seal of Professional Surveyor: <i>[Signature]</i> Certificate Number 11393</p>	

# PHILLIPS PETROLEUM COMPANY

SAN JUAN 31-6 UNIT No. 6M

1615' FSL, 2490' FWL

SW/4 SEC. 1, T-30-N, R-07-W, N.M.P.M.,

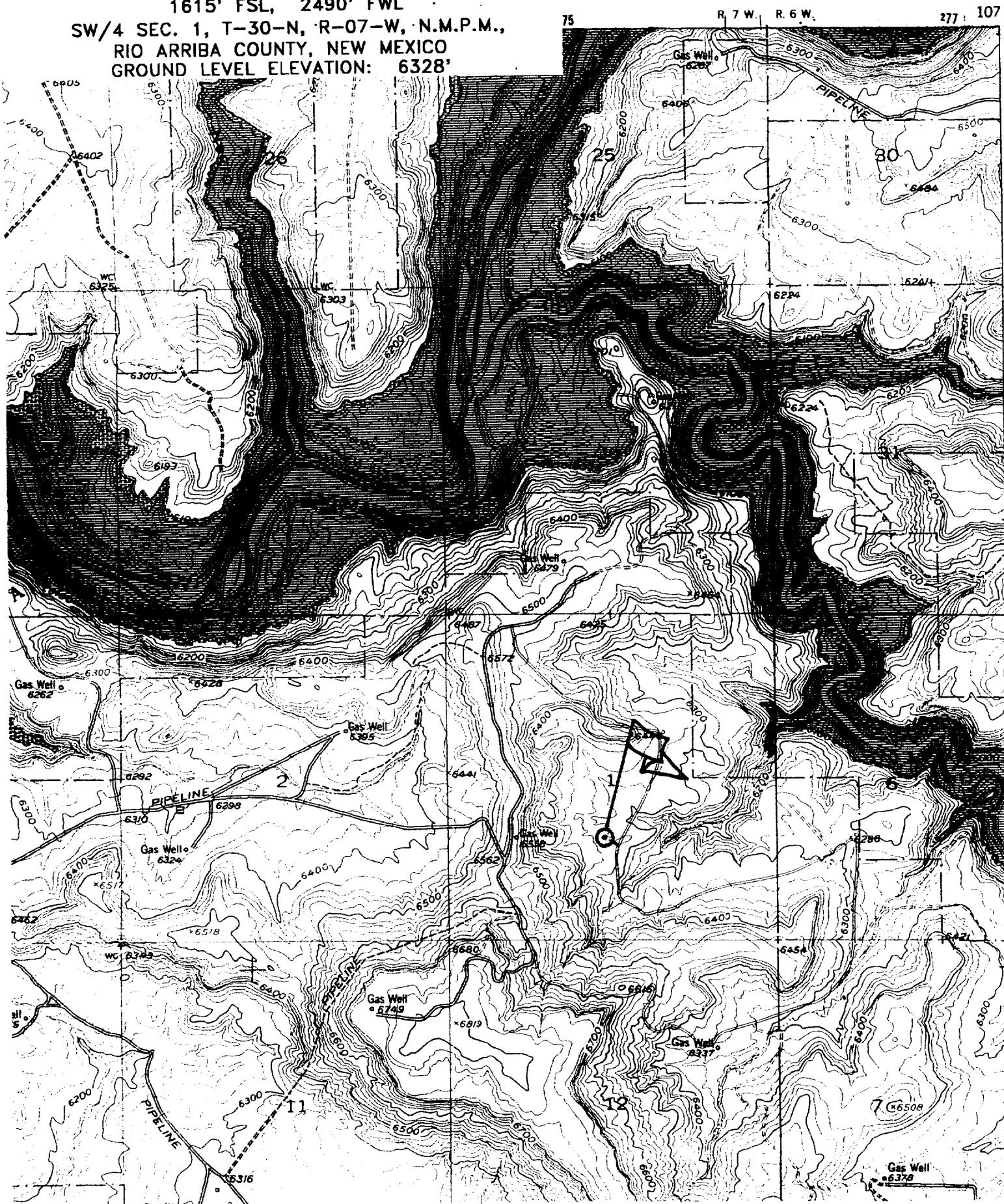
RIO ARriba COUNTY, NEW MEXICO

GROUND LEVEL ELEVATION: 6328'

NAVAJO DAM QUADRANGLE  
NEW MEXICO

7.5 MINUTE SERIES (TOPOGRAPHIC)

(FORMERLY PINE RIVER)



## PHILLIPS PETROLEUM COMPANY

WELL NAME: San Juan 31-6 Unit #6M MV/DK

### DRILLING PROGNOSIS

1. Location of Proposed Well: Unit K, 1615' FSL & 2490' FWL  
Section 1, T30N, R7W
2. Unprepared Ground Elevation: @ 6328' (unprepared)
3. The geological name of the surface formation is San Jose.
4. Type of drilling tools will be rotary.
5. Proposed drilling depth is 7980.
6. The estimated tops of important geologic markers are as follows:

<u>Nacimiento - 1090'</u>	<u>Menefee Fm. - 5180'</u>
<u>Ojo Alamo - 2335'</u>	<u>Pt. Lookout - 5480'</u>
<u>Kirtland Sh - 2500'</u>	<u>Mancos Sh - 5835'</u>
<u>Fruitland Fm. - 2892'</u>	<u>Gallup Ss. - 6790'</u>
<u>Pictured Cliffs - 3265'</u>	<u>Greenhorn Ls. - 7525'</u>
<u>Lewis Shale - 3425'</u>	<u>Graneros Sh. - 7575'</u>
<u>Cliff House Ss - 5125'</u>	<u>Dakota Ss - 7710'</u>

7. The estimated depths at which anticipated water, oil, gas or other mineral bearing formations are expected to be encountered are as follows:

Water:	<u>Ojo Alamo - 2335' - 2500'</u>
Gas & Water:	<u>Fruitland - 2892' - 3265'</u>
Gas:	<u>Mesaverde - 5125' - 5835'</u>
	<u>Dakota - 7710' - <del>7860'</del> 7480'</u>

8. The proposed casing program is as follows:

Surface String: 9-5/8", 32.3#, H-40 @ 320'  
Intermediate String: 7", 20#, J/K-55 @ 3550'  
Production String: 4-1/2", 11.6#, I-80 @ ~~7860'~~ (TD) 7480'

9. Cement Program:

Surface String: 158.5 sx Type III cement with 2% bwoc CaCl<sub>2</sub> + 1/4#/sx Cello-flake mixed at 14.5 ppg with a 1.41 ft<sup>3</sup>/sx yield w/46.5% H<sub>2</sub>O or sufficient to circulate to surface - 223 cf.

Note: Cement slurry calculations based on cement to surface with 140% excess hole volume.

Intermediate String: **Lead Cement:** 424.1 sx Type III cement (35:65) POZ with 5#/sx Gilsonite, ¼#/sx Cello-flake, 6% bwoc gel (bentonite), 10#/sx CSE, 3% bwow KCL, 0.4% bwoc FL-25 mixed and 0.02#/sx Static Free mixed at 12.0 ppg with a yield of 2.37 ft<sup>3</sup>/sx – 1005 cf.

**Tail Cement:** 50 sx – Type III cement with ¼#/sx Cello-flake and 1% CaCl<sub>2</sub> mixed at 14.5 ppg with a 1.40 ft<sup>3</sup>/sx yield (70 cf).

In the event we encounter fluid loss during drilling operations, a contingency plan for cementing the intermediate casing may require a stage collar. Phillips cannot predict exact volumes. However the 1<sup>st</sup> stage will be C1 H cement w/5#/sx Gilsonite, 0.25#/sx Cello-flake, 0.3% FL-25 & 2% CaCl<sub>2</sub> mixed at 15.2 ppg 1.28 yield. Stage 2 - lead slurry: 65 % Class H & 35% POZ w/6% Bentonite mixed at 12.6 ppg 1.79 cf/sx Tail Slurry - Class H w/2% CaCl<sub>2</sub> mixed at 15.6 ppg 1.20 yield. All attempt to be circulated to surface.

#### Production String

**Lead:** 338.5 sx Type III (35/65 POZ (Fly Ash) with 6% bwoc Bentonite, 10#/sx CSE, 0.2#/sx Static Free, 1% bwoc FL-52, 0.3% bwoc CD-32, 0.3% bwoc R-3 & 0.25#/sx Cello-Flake mixed at 12.3 ppg with a yield of 2.13 ft<sup>3</sup>/sx – 721cf.

Note: The Production String casing cement is designed to cover openhole section (with 40% excess) and 100' inside the 7" shoe.

Note: Phillips Petroleum continually works to improve the cement slurries on our wells. BJ Services is currently trying to improve what we are using now and before we would use a new cement program it would have to have stronger properties than we are currently using.

#### Centralizer Program:

Surface: Total four (4) 1 @ 10' above shoe & top of 2<sup>nd</sup>, 4<sup>th</sup> & 6<sup>th</sup> joint

Intermediate: Total seven (7) – 10' above shoe, top of 1<sup>st</sup>, 2<sup>nd</sup>, 4<sup>th</sup>, 6<sup>th</sup>, & 8<sup>th</sup> jts & 1 jt. Above surface casing.

Production: None planned.

Turbulators: Total Three (3) – on intermediate casing at 1<sup>st</sup> jt. Below the Ojo Alamo and next 2 jts up.

10. The minimum specifications for pressure control equipment which are to be used, a schematic diagram thereof showing sizes, pressure ratings (or) API series and the testing procedure and testing frequency are enclosed within the APD packet.

## **BOP AND RELATED EQUIPMENT CHECK LIST**

### **3M SYSTEM:**

2 hydr. rams (pipe & blind) or hydr. ram and annular with blind ram on bottom

Kill Line (2-inch minimum)

1 kill line valve (2-inch minimum)

1 choke line valve

2 chokes (refer to diagram in attachment 1) on choke manifold

Upper kelly cock valve in open position with handle available

Safety valve (in open position) and subs to fit all drill strings in use (with handle available)

Pressure gauged on choke manifold

2 inch minimum choke line

Fill-up line above the uppermost preventer

*The BOPs will be pressure tested according to Onshore Order #2 III, A 1 and 30% safety factor.*