

UNITED STATES  
DEPARTMENT OF THE INTERIOR  
BUREAU OF LAND MANAGEMENT

APPLICATION FOR PERMIT TO DRILL, DEEPEN, OR PLUG BACK

2001 SEP 21 4:00  
070 FEB 2002

1a. Type of Work DRILL	5. Lease Number NM-012709 Unit Reporting Number MV-8910005380
1b. Type of Well GAS	6. If Indian, All. or Tribe
2. Operator <b>BURLINGTON RESOURCES</b> Oil & Gas Company	7. Unit Agreement Name San Juan 30-6 Unit
3. Address & Phone No. of Operator PO Box 4289, Farmington, NM 87499 (505) 326-9700	8. Farm or Lease Name San Juan 30-6 Unit
4. Location of Well 1080' FSL, 1770' FWL Latitude 36° 46.8, Longitude 107° 35.8	9. Well Number 15B
	10. Field, Pool, Wildcat Blanco MV/
	11. Sec., Twn, Rge, Mer. (NMPM) N Sec. 29, T-30-N, R-7-W API # 30-039- 26816
14. Distance in Miles from Nearest Town 18.1 miles from Blanco	12. County Rio Arriba
	13. State NM
15. Distance from Proposed Location to Nearest Property or Lease Line 1080'	
16. Acres in Lease	17. Acres Assigned to Well 320 S/2
18. Distance from Proposed Location to Nearest Well, Drlg, Compl, or Applied for on this Lease 712'	
19. Proposed Depth <del>7680'</del> 5745'	20. Rotary or Cable Tools Rotary
21. Elevations (DF, FT, GR, Etc.) 6278' GR	22. Approx. Date Work will Start
23. Proposed Casing and Cementing Program See Operations Plan attached	
24. Authorized by: <u>Jaquelyn Cree</u> Regulatory/Compliance Supervisor	Date <u>9-20-01</u>

PERMIT NO.

APPROVAL DATE

APPROVED BY D. Mankiewicz

TITLE

DATE

Archaeological Report to be submitted

Threatened and Endangered Species Report to be submitted

NOTE: This format is issued in lieu of U.S. BLM Form 3160-3

Title 18 U.S.C. Section 1001, makes it a crime for any person knowingly and willfully to make to any department or agency of the United States any false, fictitious or fraudulent statements or presentations as to any matter within its jurisdiction.

DRILLING OPERATIONS AUTHORIZED ARE  
SUBJECT TO COMPLIANCE WITH ATTACHED  
"GENERAL REQUIREMENTS"

DISTRICT I  
1625 N. French Dr., Hobbs, N.M. 88240

DISTRICT II  
811 South First, Artesia, N.M. 88210

DISTRICT III  
1000 Rio Brazos Rd., Aztec, N.M. 87410

DISTRICT IV  
2040 South Pacheco, Santa Fe, NM 87505

State of New Mexico  
Energy, Minerals & Natural Resources Department

Form C-102  
Revised August 15, 2000

OIL CONSERVATION DIVISION

2040 South Pacheco  
Santa Fe, NM 87505

Submit to Appropriate District Office  
State Lease - 4 Copies  
Fee Lease - 3 Copies

☐ AMENDED REPORT

WELL LOCATION AND ACREAGE DEDICATION PLAT

<sup>1</sup> API Number 30-039-26816	<sup>2</sup> Pool Code 72319	<sup>3</sup> Pool Name Blanco Mesaverde
<sup>4</sup> Property Code 7469	<sup>5</sup> Property Name SAN JUAN 30-6 UNIT	<sup>6</sup> Well Number 15B
<sup>7</sup> GRID No. 14538	<sup>8</sup> Operator Name BURLINGTON RESOURCES OIL & GAS INC.	<sup>9</sup> Elevation 6278

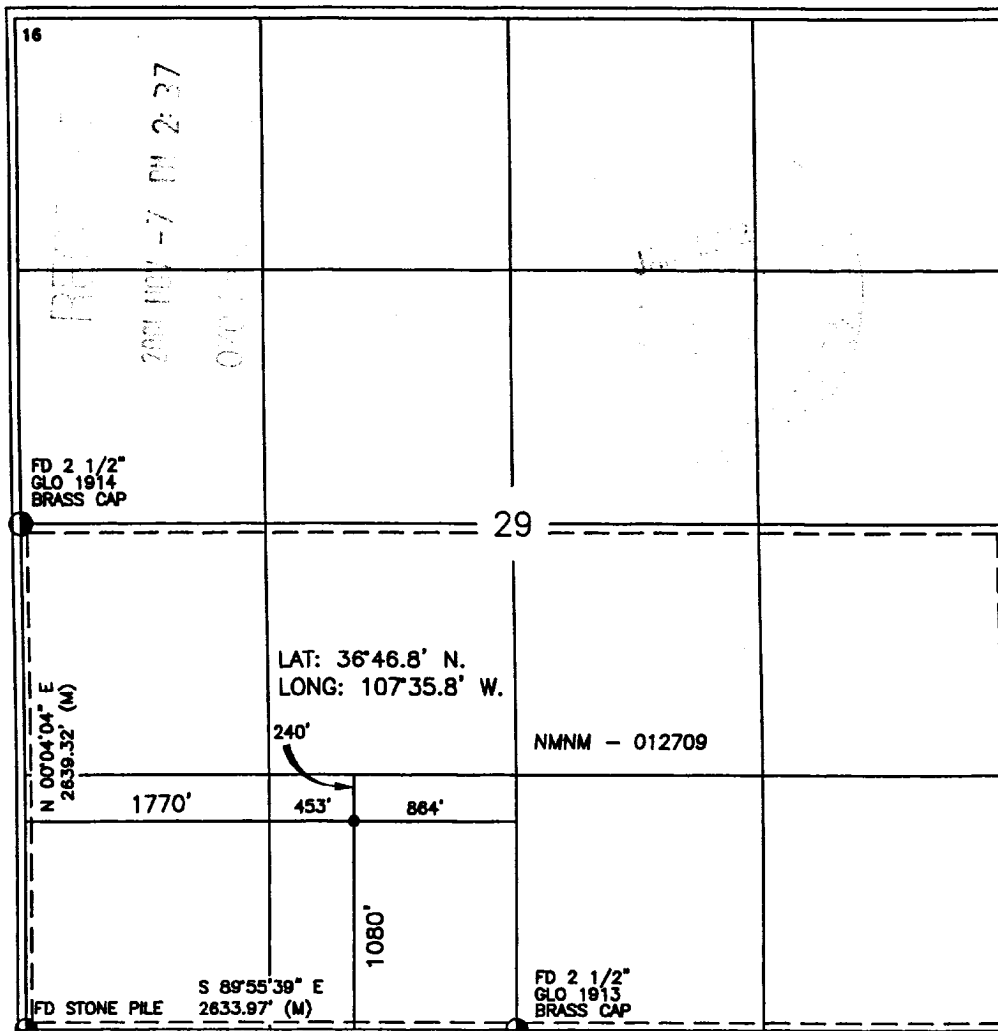
<sup>10</sup> Surface Location

UL or lot no.	Section	Township	Range	Lot Idn	Feet from the	North/South line	Feet from the	East/West line	County
N	29	30-N	7-W		1080	SOUTH	1770	WEST	RIO ARriba

<sup>11</sup> Bottom Hole Location If Different From Surface

UL or lot no.	Section	Township	Range	Lot Idn	Feet from the	North/South line	Feet from the	East/West line	County
<sup>12</sup> Dedicated Acres MV-S/320					<sup>13</sup> Joint or Infill		<sup>14</sup> Consolidation Code		<sup>15</sup> Order No.

NO ALLOWABLE WILL BE ASSIGNED TO THIS COMPLETION UNTIL ALL INTERESTS HAVE BEEN CONSOLIDATED  
OR A NON-STANDARD UNIT HAS BEEN APPROVED BY THE DIVISION



17 OPERATOR CERTIFICATION

I hereby certify that the information contained herein  
is true and complete to the best of my knowledge and  
belief.

*Peggy Cole*  
Signature

Peggy Cole  
Printed Name

Regulatory Supervisor

Title

11-06-01

Date

18 SURVEYOR CERTIFICATION

I hereby certify that the well location shown on this plat  
was plotted from field notes of actual surveys made by  
me or under my supervision, and that the same is true  
and correct to the best of my belief.

5-25  
ROY A. RUSH  
NEW MEXICO  
REGISTERED PROFESSIONAL LAND SURVEYOR  
8894

Certificate Number