

District I  
PO Box 1980, Hobbs, NM 88241-1980  
District II  
811 South First, Artesia, NM 88210  
District III  
1000 Rio Brazos Rd., Aztec, NM 87410  
District IV

Energy, Minerals & Natural Resources Department

Form C-101

Revised October 18, 1994

Instructions on back

Submit to Appropriate District Office

State Lease - 6 Copies

Fee Lease - 5 Copies

OIL CONSERVATION DIVISION

2040 South Pacheco

Santa Fe, NM 87505

AMENDED REPORT

APPLICATION FOR PERMIT TO DRILL, RE-ENTER, ~~DEEPEN~~, PLUGBACK, OR ADD A ZONE

<sup>1</sup> Operator Name and Address. Burlington Resources Oil & Gas Company PO Box 4289, Farmington, NM 87499		<sup>2</sup> OGRID Number 14538
		<sup>3</sup> API Number 30 - 039- <u>26835</u>
<sup>4</sup> Property Code 7469	<sup>5</sup> Property Name San Juan 30-6 Unit	<sup>6</sup> Well No. 87B

<sup>7</sup> Surface Location

UL or lot no.	Section	Township	Range	Lot Idn	Feet from the	North/South line	Feet from the	East/West line	County
N	36	30N	7W		675'	South	1915'	West	Rio Arriba

<sup>8</sup> Proposed Bottom Hole Location If Different From Surface

UL or lot no.	Section	Township	Range	Lot Idn	Feet from the	North/South line	Feet from the	East/West line	County

<sup>9</sup> Proposed Pool 1

<sup>10</sup> Proposed Pool 2

Blanco Mesaverde

Basin Dakota

<sup>11</sup> Work Type Code N	<sup>12</sup> Well Type Code G	<sup>13</sup> Cable/Rotary Rotary	<sup>14</sup> Lease Type Code S	<sup>15</sup> Ground Level Elevation 6898' GR
<sup>16</sup> Multiple Y	<sup>17</sup> Proposed Depth 8275'	<sup>18</sup> Formation Mesaverde/Dakota	<sup>19</sup> Contractor N/a	<sup>20</sup> Spud Date N/a

<sup>21</sup> Proposed Casing and Cement Program

Hole Size	Casing Size	Casing weight/foot	Setting Depth	Cu.ft. of Cement	Estimated TOC
12 1/4"	9 5/8"	32.3#	200'	188 cu.ft.	Surface
8 3/4"	7"	20#	4017'	1207 cu.ft.	Surface
6 1/4"	4 1/2"	10.5#	3917-8275'	626 cu.ft.	3917'

<sup>22</sup> Describe the proposed program. If this application is to DEEPEN or PLUG BACK give the data on the present productive zone and proposed new productive zone. Describe the blowout prevention program, if any. Use additional sheets if necessary.

11" 3000 psi minimum double gate BOP

Note: to facilitate higher hydraulic stimulation completion work, no liner hanger will be used. In its place, a long string of 4 1/2" casing will be run and cemented with a minimum of 100' of cement overlap between the 4 1/2" and 7" casing strings. After completion of the well, a 4 1/2" retrievable bridge plug will be set below the top of cement in the 4 1/2" x 7" overlap. The 4 1/2" casing will then be backed off above the top of cement in the 4 1/2" x 7" overlap and laid down. The 4 1/2" bridge plug will then be retrieved and the production tubing will be run to produce the well.

<sup>23</sup> I hereby certify that the information given above is true and complete to the best of my knowledge and belief. Signature: <u>Peggy Cole</u>		OIL CONSERVATION DIVISION	
Printed name: Peggy Cole		Approved by: <u>[Signature]</u>	
Title: Regulatory/Compliance Supervisor		Title: <u>DEPUTY OIL &amp; GAS INSPECTOR, DIST. 30</u>	
Date: <u>10-10-01</u>		Approval Date: <u>OCT 11 2001</u> Expiration Date: <u>OCT 11 2002</u>	
Phone: 505-326-9700		Conditions of Approval : Attached <input type="checkbox"/>	

DISTRICT I  
1625 N. French Dr., Hobbs, N.M. 88240

DISTRICT II  
811 South First, Artesia, N.M. 86210

DISTRICT III  
1000 Rio Brazos Rd., Aztec, N.M. 87410

DISTRICT IV  
2040 South Pacheco, Santa Fe, NM 87505

State of New Mexico  
Energy, Minerals & Natural Resources Department

Form C-102  
Revised August 15, 2000

Submit to Appropriate District Office  
State Lease - 4 Copies  
Fee Lease - 3 Copies

OIL CONSERVATION DIVISION

2040 South Pacheco  
Santa Fe, NM 87505

☐ AMENDED REPORT

WELL LOCATION AND ACREAGE DEDICATION PLAT

<sup>1</sup> API Number 30-039- <b>26835</b>	<sup>2</sup> Pool Code 72319/71599	<sup>3</sup> Pool Name Blanco Mesaverde/Basin Dakota
<sup>4</sup> Property Code 7469	<sup>5</sup> Property Name SAN JUAN 30-6 UNIT	<sup>6</sup> Well Number 87B
<sup>7</sup> OGUID No. 14538	<sup>8</sup> Operator Name BURLINGTON RESOURCES OIL AND GAS, INC.	<sup>9</sup> Elevation 6898'

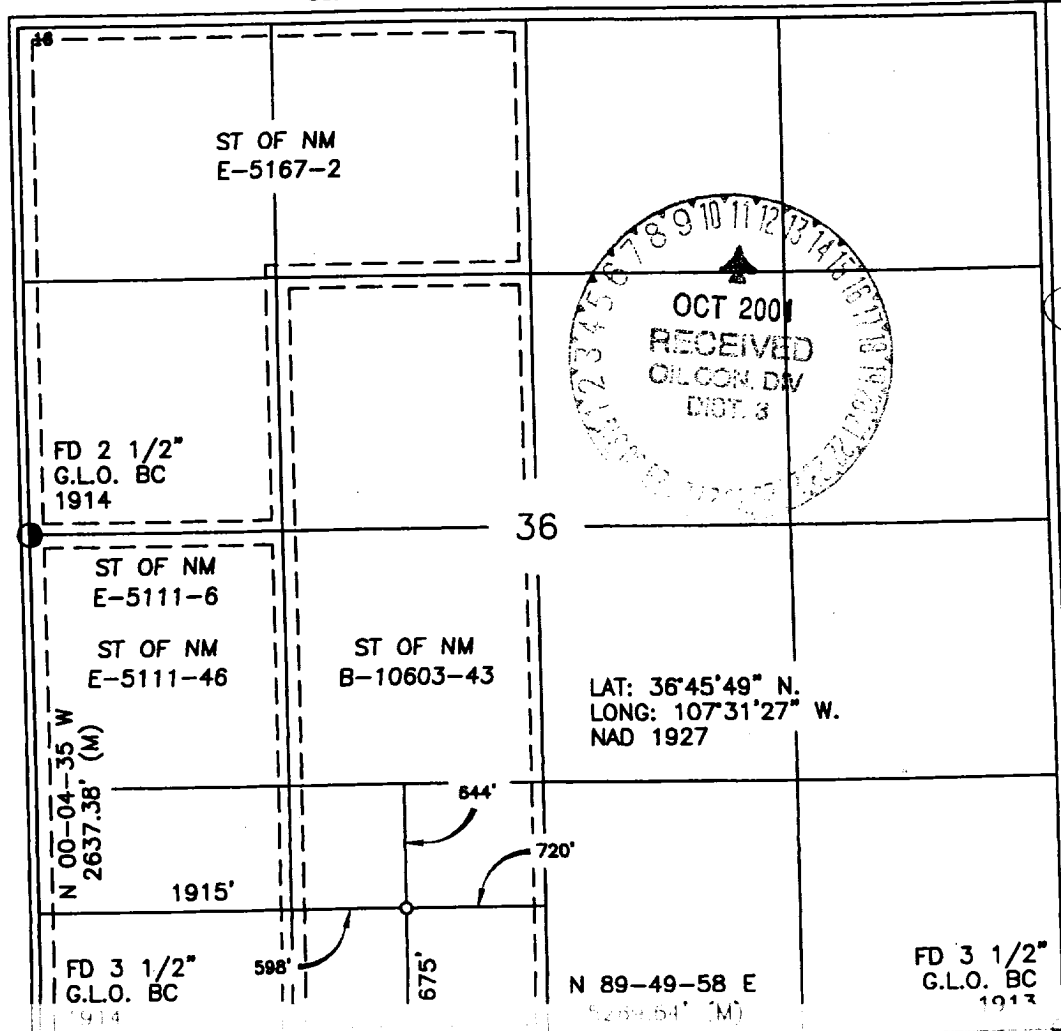
<sup>10</sup> Surface Location

UL or lot no.	Section	Township	Range	Lot Idn	Feet from the	North/South line	Feet from the	East/West line	County
N	36	30-N	7-W		675'	SOUTH	1915'	WEST	RIO ARriba

<sup>11</sup> Bottom Hole Location If Different From Surface

UL or lot no.	Section	Township	Range	Lot Idn	Feet from the	North/South line	Feet from the	East/West line	County
<sup>12</sup> Dedicated Acres MV-W/320 DK-W/320					<sup>13</sup> Joint or Infill		<sup>14</sup> Consolidation Code		<sup>15</sup> Order No.

NO ALLOWABLE WILL BE ASSIGNED TO THIS COMPLETION UNTIL ALL INTERESTS HAVE BEEN CONSOLIDATED  
OR A NON-STANDARD UNIT HAS BEEN APPROVED BY THE DIVISION



17 OPERATOR CERTIFICATION

I hereby certify that the information contained herein is true and complete to the best of my knowledge and belief

*Peggy Cole*  
Signature  
Peggy Cole  
Printed Name  
Regulatory Supervisor  
Title  
10-10-01  
Date

18 SURVEYOR CERTIFICATION

I hereby certify that the well location shown on this plat was plotted from field notes of actual surveys made by me or under my supervision, and that the same is true and correct to the best of my belief.

9-14-01  
Date of Survey  
CROY A. RUSH  
Signature and Seal of Professional Surveyor  
8894  
Certificate Number