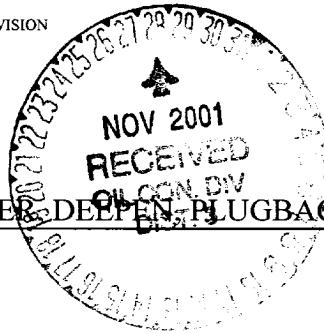


District I
PO Box 1980, Hobbs, NM 88241-1980
District II
811 South First, Artesia, NM 88210
District III
1000 Rio Brazos Rd., Aztec, NM 87410
District IV

Energy, Minerals & Natural Resources Department

OIL CONSERVATION DIVISION
2040 South Pacheco
Santa Fe, NM 87505

Form C-101
Revised October 18, 1994
Instructions on back
Submit to Appropriate District Office
State Lease - 6 Copies
Fee Lease - 5 Copies
AMENDED REPORT



APPLICATION FOR PERMIT TO DRILL, RE-ENTER, DEEPEN, PLUGBACK, OR ADD A ZONE

¹ Operator Name and Address. Burlington Resources Oil & Gas Company PO Box 4289, Farmington, NM 87499		² OGRID Number 14538
		³ API Number 30 - 039-26870
⁴ Property Code 7469	⁵ Property Name San Juan 30-6 Unit	⁶ Well No. 24B

⁷ Surface Location

UL or lot no.	Section	Township	Range	Lot Idn	Feet from the	North/South line	Feet from the	East/West line	County
I	16	30N	6W		1845'	South	825'	East	Rio Arriba

⁸ Proposed Bottom Hole Location If Different From Surface

UL or lot no.	Section	Township	Range	Lot Idn	Feet from the	North/South line	Feet from the	East/West line	County

⁹ Proposed Pool 1 Blanco Mesaverde	¹⁰ Proposed Pool 2 Basin Dakota
--	---

¹¹ Work Type Code N	¹² Well Type Code G	¹³ Cable/Rotary Rotary	¹⁴ Lease Type Code State	¹⁵ Ground Level Elevation 6595' GR
¹⁶ Multiple Y	¹⁷ Proposed Depth 8017'	¹⁸ Formation Mesaverde/Dakota	¹⁹ Contractor N/a	²⁰ Spud Date N/a

²¹ Proposed Casing and Cement Program

Hole Size	Casing Size	Casing weight/foot	Setting Depth	Cu.ft. of Cement	Estimated TOC
12 1/4"	9 5/8"	32.3#	400'	376 cu.ft.	Surface
8 3/4"	7"	20#	3697'	1111 cu.ft.	Surface
6 1/4"	4 1/2"	10.5#	3597-8017'	635 cu.ft.	3597'

²² Describe the proposed program. If this application is to DEEPEN or PLUG BACK give the data on the present productive zone and proposed new productive zone. Describe the blowout prevention program, if any. Use additional sheets if necessary.

11" 3000 psi minimum double gate BOP

Note: to facilitate higher hydraulic stimulation completion work, no liner hanger will be used. In its place, a long string of 4 1/2" casing will be run and cemented with a minimum of 100' of cement overlap between the 4 1/2" and 7" casing strings. After completion of the well, a 4 1/2" retrievable bridge plug will be set below the top of cement in the 4 1/2" x 7" overlap. The 4 1/2" casing will then be backed off above the top of cement in the 4 1/2" x 7" overlap and laid down. The 4 1/2" bridge plug will then be retrieved and the production tubing will be run to produce the well.

²³ I hereby certify that the information given above is true and complete to the best of my knowledge and belief. Signature: <i>Peggy Cole</i>	OIL CONSERVATION DIVISION	
Printed name: Peggy Cole	Approved by: <i>[Signature]</i>	Title: DEPUTY OIL & GAS INSPECTOR, DIST. 00
Title: Regulatory/Compliance Supervisor	Approval Date: NOV 29 2001	Expiration Date: NOV 29 2002
Date: 11-27-01	Phone: 505-326-9700	Conditions of Approval : Attached <input type="checkbox"/>

✓
K

District I
PO Box 1980, Hobbs, NM 88241-1980

District II
PO Drawer DD, Artesia, NM 88211-0719

District III
1000 Rio Brazos Rd., Aztec, NM 87410

District IV
PO Box 2088, Santa Fe, NM 87504-2088

State of New Mexico
Energy, Minerals & Natural Resources Department

OIL CONSERVATION DIVISION
PO Box 2088
Santa Fe, NM 87504-2088

Form C-102
Revised February 21, 1994
Instructions on back
Submit to Appropriate District Office
State Lease - 4 Copies
Fee Lease - 3 Copies

☐ AMENDED REPORT

WELL LOCATION AND ACREAGE DEDICATION PLAT

*API Number 30-039-26870		*Pool Code 72319/71599	*Pool Name Blanco Mesaverde/Basin Dakota
*Property Code 7469	*Property Name SAN JUAN 30-6 UNIT		*Well Number 248
*OGRID No. 14538	*Operator Name BURLINGTON RESOURCES OIL & GAS COMPANY LP		*Elevation 6595'

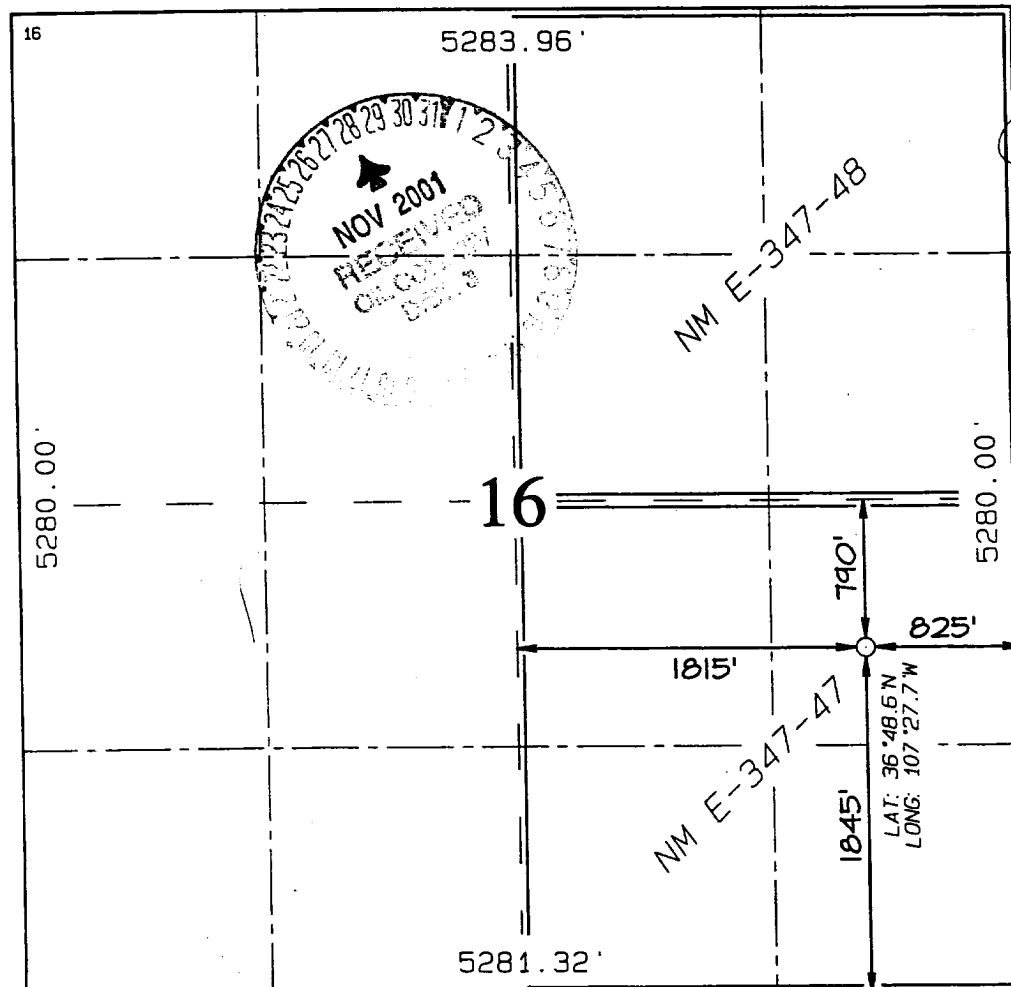
¹⁰ Surface Location

UL or lot no.	Section	Township	Range	Lot Idn	Feet from the	North/South line	Feet from the	East/West line	County
I	16	30N	6W		1845	SOUTH	825	EAST	RIO ARriba

¹¹ Bottom Hole Location If Different From Surface

UL or lot no.	Section	Township	Range	Lot Idn	Feet from the	North/South line	Feet from the	East/West line	County
¹² Dedicated Acres MV-E/320 DK-E/320					¹³ Joint or Infill	¹⁴ Consolidation Code	¹⁵ Order No.		

NO ALLOWABLE WILL BE ASSIGNED TO THIS COMPLETION UNTIL ALL INTERESTS HAVE BEEN CONSOLIDATED OR A NON-STANDARD UNIT HAS BEEN APPROVED BY THE DIVISION



¹⁷ OPERATOR CERTIFICATION

I hereby certify that the information contained herein is true and complete to the best of my knowledge and belief

Peggy Cole
Signature
Peggy Cole
Printed Name
Regulatory Supervisor
Title
11-23-01
Date

¹⁸ SURVEYOR CERTIFICATION

I hereby certify that the well location shown on this plat was plotted from field notes of actual surveys made by me or under my supervision, and that the same is true and correct to the best of my belief.

Survey Date: OCTOBER 25, 2001

Signature and Seal of Professional Surveyor



Jason C. Edwards
Certificate Number 15269