

NEW MEXICO OIL CONSERVATION COMMISSION
Santa Fe, New Mexico

NOTICE OF INTENTION TO DRILL OR RECOMPLETE

Notice must be given to the District Office of the Oil Conservation Commission and approval obtained before drilling or recompleting begins. If changes in the proposed plan are considered advisable, a copy of this notice showing such changes will be returned to the sender. Submit this notice in **QUINTUPLICATE**. One copy will be returned following approval. See additional instructions in Rules and Regulations of the Commission.

Albuquerque, New Mexico

(Place)

July 14, 1955

(Date)

OIL CONSERVATION COMMISSION
SANTA FE, NEW MEXICO

Gentlemen:

You are hereby notified that it is our intention to commence the (Drilling) (~~Recompletion~~) of a well to be known as
Pubco Development, Inc.

(Company or Operator)

State

(Lease)

Well No. 20

in

J

(Unit)

The well is

located 1400 feet from the South line and 1400 feet from the East line of Section 35, T. 20N, R. 10W, NMPM.

(GIVE LOCATION FROM SECTION LINE)

Aztec Pictured Cliff

Pool,

San Juan

County

Elevation: 7601 GL

If State Land the Oil and Gas Lease is No.

E-354 - NE₄SE₄ - 40 A - PubcoE-1504 - W₂SE₄ - 60 A - PubcoE-5147 - SE₄SE₄ - 40 A - The Texas160 A (SE₄ Unit)

We propose to drill well with drilling equipment as follows: With rotary to the top of the Pictured Cliff formation and cable tools through the Pictured Cliff.

The status of plugging bond is \$10,000 Blanket Bond previously approved and on file with the Commission.

Drilling Contractor -- contract not awarded --

Pictured Cliff

We intend to complete this well in the Pictured Cliff formation at an approximate depth of 2200 feet.

CASING PROGRAM

We propose to use the following strings of Casing and to cement them as indicated:

Size of Hole	Size of Casing	Weight per Foot	New or Second Hand	Depth	Sacks Cement
13-3/4"	5-5/8"	32.3#	New	200'	cement circulated
8-3/4"	5-1/2"	14	New	2200'	200 sacks

If changes in the above plans become advisable we will notify you immediately.

ADDITIONAL INFORMATION (If recompleting give full details of proposed plan of work.)

It is proposed to drill with rotary tools to the top of the Pictured Cliff formation, estimated to be at a depth of 2000 feet; thereafter to drill with cable tools through the Pictured Cliff. It is further proposed to sand-oil frac the Pictured Cliff formation.

Approved
Except as follows:

7-15, 1955

Sincerely yours,

PUBCO DEVELOPMENT, INC.

(Company or Operator)

By

Frank D. Gorman, Jr.

Position Vice President

Send Communications regarding well to

Name Pubco Development, Inc.

Box 141

Address

Albuquerque, New Mexico

OIL CONSERVATION COMMISSION

By

Title

Oil and Gas Inspector Dist. #3.

Company Pulco Development Co.

Lease Pulco State

Well No. 20

Sec. 36

T. 29 N

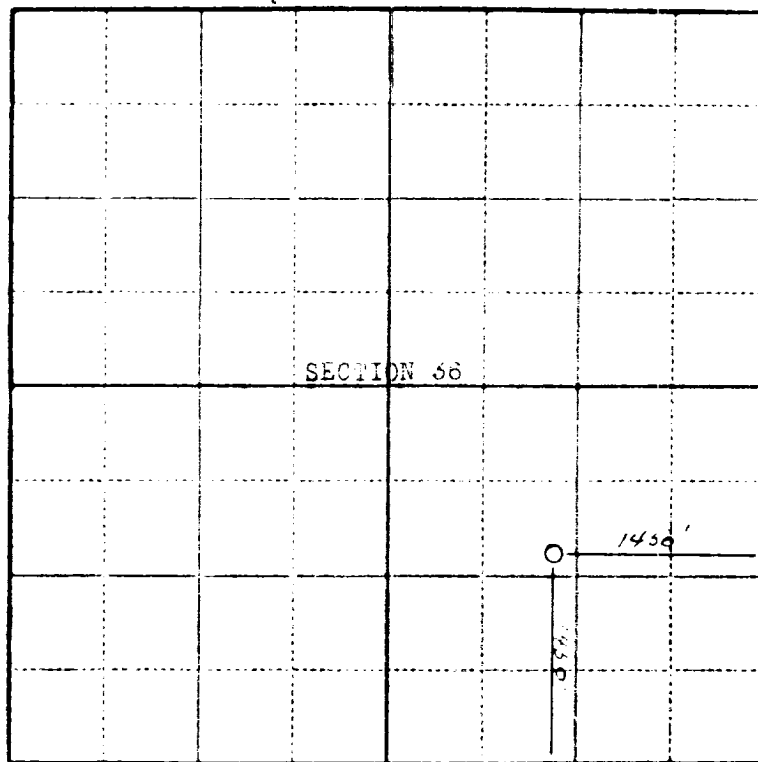
R. 10 W N.M.P.M.

Location 1450 feet from south line; 1450 feet from east line.

Elevation 5761 GL

San Juan County

New Mexico



Scale- 4 inches equal 1 mile.

This is to certify that the above plat was prepared from field notes of actual surveys made by me or under my supervision and that the same are true and correct to the best of my knowledge and belief

Stephen H. Kinney

STEPHEN H. KINNEY
Registered Professional
Engineer and Land Surveyor

Surveyed

July 9

1955

Sec.



OIL CONSERVATION COMMISSION
 AZTEC DISTRICT OFFICE

No. Copies Received

DISTRIBUTION

	NO. FURNISHED	
Operator		
Santa Fe		
Proration Office		
State Land Office		
U. S. C. S.		
Transporter		
File		