



**NEW MEXICO ENERGY, MINERALS
& NATURAL RESOURCES DEPARTMENT**

GARY E. JOHNSON
GOVERNOR

OIL CONSERVATION DIVISION
AZTEC DISTRICT OFFICE
1000 RIO BRAZOS ROAD
AZTEC, NEW MEXICO 87410
(800) 334-6170 Fax (800) 334-6170

JENNIFER A. SALISBURY
CABINET SECRETARY

July 7, 1997

Rand Carroll
Oil Conservation Division Attorney
2040 S Pacheco
Santa Fe NM 87505

RE: Benson & Montin, Gallegos Canyon Unit #2, K-35-29N-12W, 30-045-07661

Dear Rand:

The above-mentioned well was abandoned in 1952. In 1980 the ownership of the well was not clear and Virgil Stoabs re-entered the well in 1990 rather than going to court to prove that BMG Drilling was not liable for plugging the well. After several weeks they were at approximately 600 feet and moved off the well due to the expense of cleaning out the open hole. Later BMG Drilling was found to have no obligation to the plugging responsibility. Since that time the operator has deceased and the bond released. The well is now classified as an orphan well and should be plugged with the Reclamation Fund as soon as possible. Please add this well to the BMNS Waggoner #2 bid package as it is in the same area.

This well doesn't fall under an emergency but there are houses located all around the well.

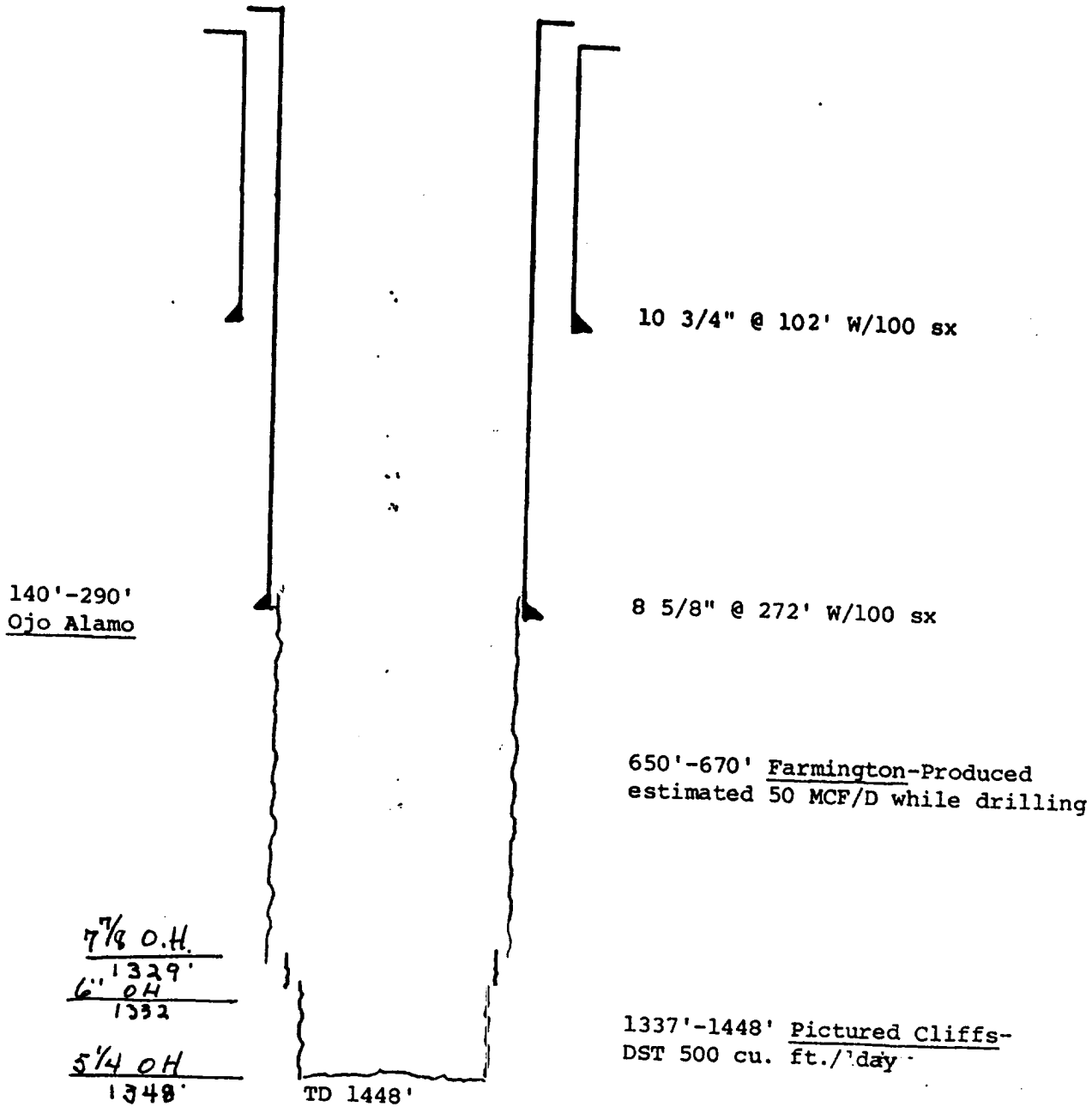
Sincerely,

A handwritten signature in cursive script that reads "Johnny Robinson".

Johnny Robinson
Deputy O&G Inspector

JR/sh

BENSON & MONTIN
Gallegos Canyon Unit #2
K-35-29N-12W
Wellbore Diagram
API 30-045-07661



July 1990

NO. OF COPIES RECEIVED	
DISTRIBUTION	
SANTA FE	
FILE	
U.S.G.S.	
LAND OFFICE	
OPERATOR	

NEW MEXICO OIL CONSERVATION COMMISSION

Form C-103
Supersedes Old
C-102 and C-103
Effective 1-4-83

3a. Indicate Type of Lease	
State <input type="checkbox"/>	Fee <input checked="" type="checkbox"/>
3. State Oil & Gas Lease No.	
7. Unit Agreement Name	
Gallegos Canyon Unit	
8. Form or Lease Name	
Gallegos Canyon Unit	
9. Well No.	
2	
10. Field and Pool, or Wildcat	
Wildcat	
12. County	
San Juan	

SUNDRY NOTICES AND REPORTS ON WELLS
(DO NOT USE THIS FORM FOR PROPOSALS TO DRILL OR TO DEEPEN OR PLUG BACK TO A DIFFERENT RESERVOIR. USE "APPLICATION FOR PERMIT -" (FORM C-101) FOR SUCH PROPOSALS.)

1. ☐ OIL WELL ☒ GAS WELL ☐ OTHER-

2. Name of Operator
Benson-Montin-Greer Drilling Corp.

3. Address of Operator
221 Petroleum Center Building, Farmington, NM 87401

4. Location of Well
UNIT LETTER K 1650 FEET FROM THE south LINE AND 1650 FEET FROM THE west LINE, SECTION 35 TOWNSHIP 29N RANGE 12W NMPM.

15. Elevation (Show whether DF, RT, GR, etc.)
5370' GR

16. Check Appropriate Box To Indicate Nature of Notice, Report or Other Data

NOTICE OF INTENTION TO:		SUBSEQUENT REPORT OF:	
PERFORM REMEDIAL WORK <input type="checkbox"/>	PLUG AND ABANDON <input checked="" type="checkbox"/>	REMEDIAL WORK <input type="checkbox"/>	ALTERING CASING <input type="checkbox"/>
TEMPORARILY ABANDON <input type="checkbox"/>	CHANGE PLANS <input type="checkbox"/>	COMMENCE DRILLING OPNS. <input type="checkbox"/>	PLUG AND ABANDONMENT <input type="checkbox"/>
PULL OR ALTER CASING <input type="checkbox"/>	OTHER <input type="checkbox"/>	CASING TEST AND CEMENT JOBS <input type="checkbox"/>	OTHER <input type="checkbox"/>

17. Describe Proposed or Completed Operations (Clearly state all pertinent details, and give pertinent dates, including estimated date of starting any proposed work) SEE RULE 1103.

Plug Number	Depth	Sacks of Cement
1	1448' - 1200'	70
2	750' - 550'	60
3	325' - 225'	30
4	Surface - with dry hole marker	10

DEC 20 1983
OIL CON. DIV.
DIST. 3

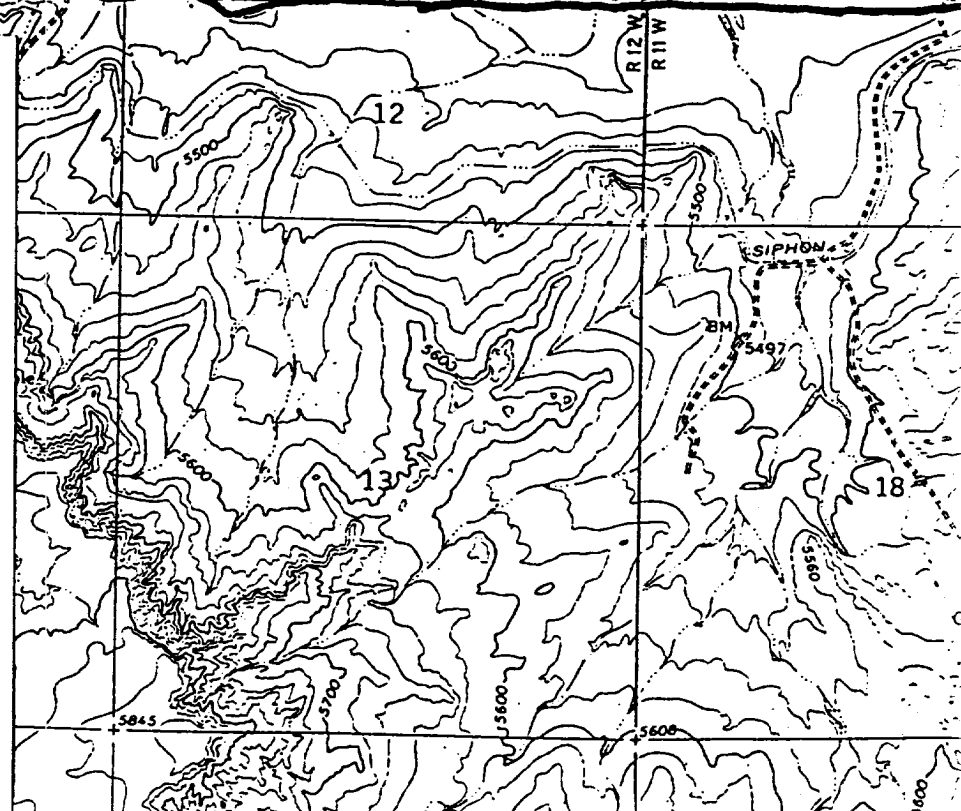
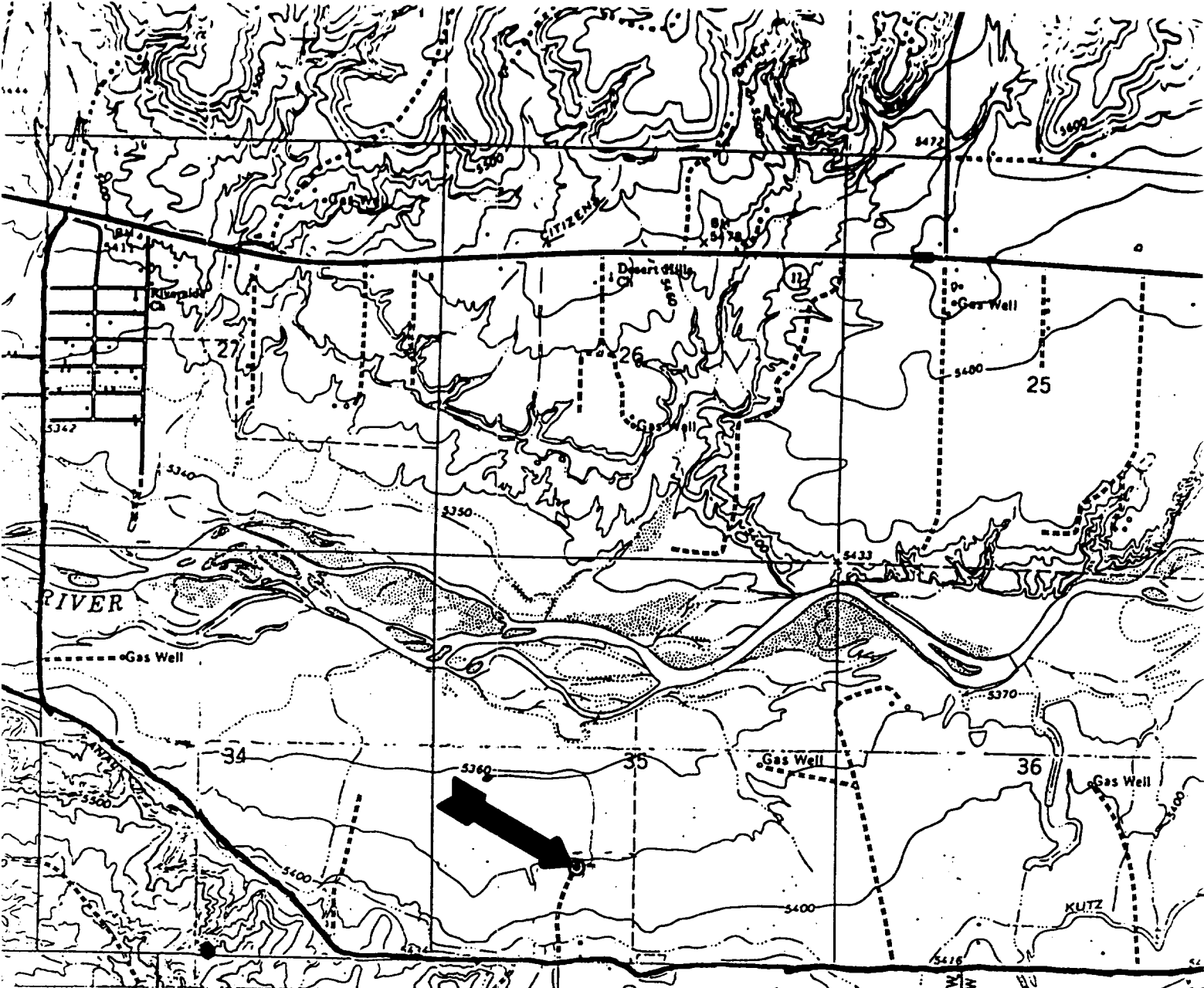
18. I hereby certify that the information above is true and complete to the best of my knowledge and belief.

SIGNED Charles Gholson TITLE Vice President DATE 12-19-83

Original Signed by CHARLES GHOLSON DEPUTY OIL & GAS INSPECTOR, DIST. #3

APPROVED BY _____ TITLE _____ DATE DEC 20 1983

CONDITIONS OF APPROVAL, IF ANY:



LOCATION 1650' from South Line
1650' from West Line
Section 35, T. 29 N., R. 12 W.

WELL NO. 3 LEASE Gallegos Canyon Unit
OPERATOR Benson & Montia
FIELD Wildcat
COUNTY San Juan
STATE New Mexico

ELEVATION K. B. 5389'

GEOLOGIST A. R. Greer

ADDRESS: 502 Continental Bldg., Dallas, Texas

STRATIGRAPHY				
FORMATION	DEPTH TO TOP		ELEVATION OF TOP	
	SAMPLES	EL. OR RA. LOG	SAMPLES	EL. OR RA. LOG
Ojo Alamo top	140	-	5240	-
Ojo Alamo base	210	-	5170	-
Base of water sand underlying Ojo Alamo	290	295	5090	5085
Farmington		650		4730
Pictured Cliffs	1329	1329	4051	4051
Lewis		1430		3950

KNOWN OIL, GAS AND WATER SANDS (DATA NEEDED FOR COMPLYING WITH STATE REGULATIONS)

FORMATION	O.G.W.	FROM	TO	FORMATION	O.G.W.	FROM	TO
Ojo Alamo	W	140	210				
Sand	W	170	290				
Farmington	G	650	670				
Pictured Cliffs	G	1329	1430				

STRUCTURAL POSITION (RELATIVE TO OFFSET OR SIGNIFICANT WELLS)

73' lower than Gallegos Canyon Unit #1

COMPLETION DATA (FORMATION COMPLETED IN AND DEPTHS, METHOD OF DRILLING IN)

See Drilling History

QUALITY OF PAY (GEOLOGIST'S OPINION OF GROSS AND NET PAY THICKNESSES AND COMPARISON WITH OFFSET OR SIGNIFICANT WELLS)

All cores showed sand to be tightly cemented with white kaolin clay. It is possible that a small well might result by sheeting the section with nitreglycerine.

OTHER SIGNIFICANT OIL OR GAS SHOWINGS

FORMATION	DEPTHS	REMARKS (QUALITY OF SHOWING)
Farmington S.S.	650-70	Estimated 50 MCF continuously produced through drilling mud.

DRILL STEM TEST SUMMARY

[illegible]

DST SUMMARY

REMARKS

WELL NO. 2 LEASE Gallegos Canyon UnitOPERATOR Benson & Montin

WELL DRILLING AND COMPLETION HISTORY

DATE	REMARKS
3-31-51	Location surveyed.
8-1-51	Location approved by New Mexico Oil Conservation Commission.
8-27-51	Rigging up rotary.
8-28-51	Spudded at 3:00 P.M. Shut down overnight @ T.D. 70'.
8-29-51	8:00 A.M. T.D. 70'. Drilled 7-7/8" hole to 130'. Reamed 13-3/4" surf. at 5:00 P.M.
8-30-51	8:00 A.M. - Waiting on cement. 5:00 P.M. - Commenced drilling 7-7/8" hole.
8-31-51	8:00 A.M. - T.D. 600'. 5:00 P.M. - T.D. 1200'. Shut down to test for artesian water. Showed Est. 30 bbl. per hour.
9-1-51	10:30 A.M. - T.D. 1200'. Set 272' 8-5/8" casing with 100 sacks, to shut off water from Ojo Alamo. Reamed hole and ran casing three times in effort to set casing at 290'. Decided to set casing at 272' and shut off most of water. Operation too slow to reach casing point of 290' with reasonable cost.
9-2-51	10:30 A.M. - Connecting up blow out preventor. Welded 8-5/8" casing to 10-3/4".
9-3-51	4:20 A.M. - T.D. 1329' (drilled coal 1316-28 - possibly 1' shale 1328-29). Prep. to go in hole with reamer and 6" bit. 7:30 A.M. - Going in hole with reamer and 6" bit. Cut 6" pilot hole from 1329-1332'. 1:30 P.M. - Cored 1332-47. Recovered 12.6' sand. 8:30 P.M. - On bottom, start core #2. 11:30 P.M. - Pulled core #2 - 1347-63' (Cored 15', Rec. 18.4').
9-4-51	4:00 A.M. - Pulled core #3 - 1363-81' - No recovery. 8:30 A.M. - Pulling core #4 - Recovered 20'. Core #5 and #6 - 1392-1430' - No recovery.
9-5-51	2:00 A.M. - T.D. 1448'. Core #7 - 1430-48'. Recovered 20'. Cond. hole. 7:30 A.M. - Commenced to run Schlumberger. 9:00 A.M. - Schlumberger broke down. Waiting on Schlumberger. 11:30 A.M. - Commenced running Schlumberger. 2:30 P.M. - Finished running Schlumberger. Cond. hole to run D.S.T.

WELL NO. 2 LEASE Gallegos Canyon UnitOPERATOR Benson & Montin

WELL DRILLING AND COMPLETION HISTORY

DATE

REMARKS

9-5-51 (Contd.) 4:30 P.M. - Prep. to run D.S.T. - Halliburton didn't have enough connections,
7:30 P.M. - Making up tool.
9:00 P.M. - Started in hole. 111' anchor.
Top of packer 1334'.
Bottom of packer 1337'. T.D. 1448'.
Open 3 hours. Slight blow Est. 500 Cu. Ft. per day of air. 15 Min. shut in pressure 0. Recovered 20' mud.

9-6-51 Temporarily abandoned.