

submitted in lieu of Form 3160-5

UNITED STATES
DEPARTMENT OF THE INTERIOR
BUREAU OF LAND MANAGEMENT

Sundry Notices and Reports on Wells

1. Type of Well
GAS

2. Name of Operator
BURLINGTON
RESOURCES OIL & GAS COMPANY

3. Address & Phone No. of Operator
PO Box 4289, Farmington, NM 87499 (505) 326-9700

4. Location of Well, Footage, Sec., T, R, M
990' FNL, 990' FWL, Sec.34, T-29-N, R-10-W, NMPM

5. Lease Number
NMSF-080724-A

6. If Indian, All. or
Tribe Name

7. Unit Agreement Name

8. Well Name & Number
Zachry #10

9. API Well No.
30-045-07727

10. Field and Pool
Aztec Pict'd Cliffs

11. County and State
San Juan Co, NM

12. CHECK APPROPRIATE BOX TO INDICATE NATURE OF NOTICE, REPORT, OTHER DATA

Type of Submission

☒ Notice of Intent
☐ Subsequent Report
☐ Final Abandonment

Type of Action

☐ Abandonment
☐ Recompletion
☐ Plugging Back
☐ Casing Repair
☐ Altering Casing
☒ Other - bradenhead repair
☐ Change of Plans
☐ New Construction
☐ Non-Routine Fracturing
☐ Water Shut off
☐ Conversion to Injection

13. Describe Proposed or Completed Operations

It is intended to repair the bradenhead on the subject well according to the attached procedure and wellbore diagram.

CTP0224631188

14. I hereby certify that the foregoing is true and correct.

Signed [Signature] Title Regulatory Supervisor Date 10/8/02
TLW

(This space for Federal or State Office use)

APPROVED BY [Signature] Title [Signature] Date 10/8/02

CONDITION OF APPROVAL, IF ANY:

Title 18 U.S.C. Section 1001, makes it a crime for any person knowingly and willfully to make to any department or agency of the United States any false, fictitious or fraudulent statements or representations as to any matter within its jurisdiction.

NMOCD

Zachry #10
Pictured Cliffs
990' FNL & 990' FWL
Unit D, Sec. 34, T29N, R10W
Latitude / Longitude: 36° 41.22' / -107° 52.69'
San Juan County, New Mexico
AIN: 3218201

9/09/2002 Bradenhead Repair Procedure

Summary/Recommendation:

The Zachry #10 was originally drilled in 1955 and was open-hole completed with oil and sand in the Pictured Cliffs formation. In 07/02, 2-7/8" production casing was run, and the well was re-stimulated. A bradenhead test performed 08/20/2002 showed flow from the bradenhead. The Aztec NMOCD office has demanded remedial action be completed by 11/01/2002. The Operations Engineer recommends a CIBP be set over the Pictured Cliffs formation, the cause of bradenhead pressure be identified, corrected and place the well back on production.

1. Comply with all BLM, and BROG regulations. Conduct daily safety meetings for all personnel on location. **Notify BROG Regulatory (Peggy Cole 326-9727) and the appropriate Regulatory Agency prior to pumping any cement job. If an unplanned cement job is required, approval is required before the job can be pumped. If verbal approval is obtained, document the approval in DIMS.** Allow as much time as possible prior to pump time in case the Agency decides to witness the cement job.
2. MIRU wireline unit. Obtain and record all wellhead pressures. Blow well down and kill with 2% KCL water if necessary. MU and RIH with 2-7/8" composite plug and set at 1844' (top perf is @ 1894'). POOH. Fill casing with 2% KCl water. Pressure test casing to 500 psi. Bleed off pressure. Contact Drilling Manager and Operations Engineer for squeeze design upon completion of pressure test. **Note: Calculated TOC (75 % efficiency) behind 5-1/2" intermediate is at 1561'.**
3. Perforate 3 bi-wire squeeze holes at 1500'. RD wireline unit. MIRU cementing company. NU relief line. Pressure up casing/tubing annulus to 500 psig. Establish rate into perforations with bradenhead valve open. (Max pressure 1000 psig). Mix 234 sxs, and begin pumping. Circulate to surface. Close bradenhead valve and squeeze cement into perforations. WOC 12 hours.
4. MIRU coiled tubing unit. NU BOP with injector head. Test and record operation of BOP rams. Have wellhead and valves serviced as necessary. Test secondary seal and replace/install as necessary. MU and RIH with mill and motor. Drill out cement. Pressure test casing to 500 psig. Test bradenhead valve for flow. Re-squeeze as necessary to hold pressure, or to stop bradenhead flow.
5. RIH to composite plug and drill out plug. Make clean run to PBTD at 2047'. POOH. RDMO coiled tubing unit.
6. ND BOP and NU WH. Obtain final pitot gauge. **If well will not flow on its own, make swab run to PBTD at 2040'.** During cleanout operations the reservoir may be charged with air. As a result of excess oxygen levels that may be in the reservoir and/or wellbore, contact the Lease Operator to discuss the need for determining oxygen levels prior to returning the well to production. RD and MOL. Return well to production.

Recommended: Jay Paul McWilliams 10/3/02 Operations Engineer Approved: Bruce W. Borge 10-4-02 Drilling Superintendent

Jay Paul McWilliams: Office: 324-6146
Cell: 320-2586

Sundry Required: YES NO

Approved: Peggy Cole 10-4-02 Regulatory

Production Foreman	Steve Florez	326-9560 (Office)	326-8199 (Pager)
Specialist:	Terry Nelson	320-2503 (Cell)	326-8473 (Pager)
Lease Operator:	Gracia Montoya	320-4267 (Cell)	326-8432 (Pager)

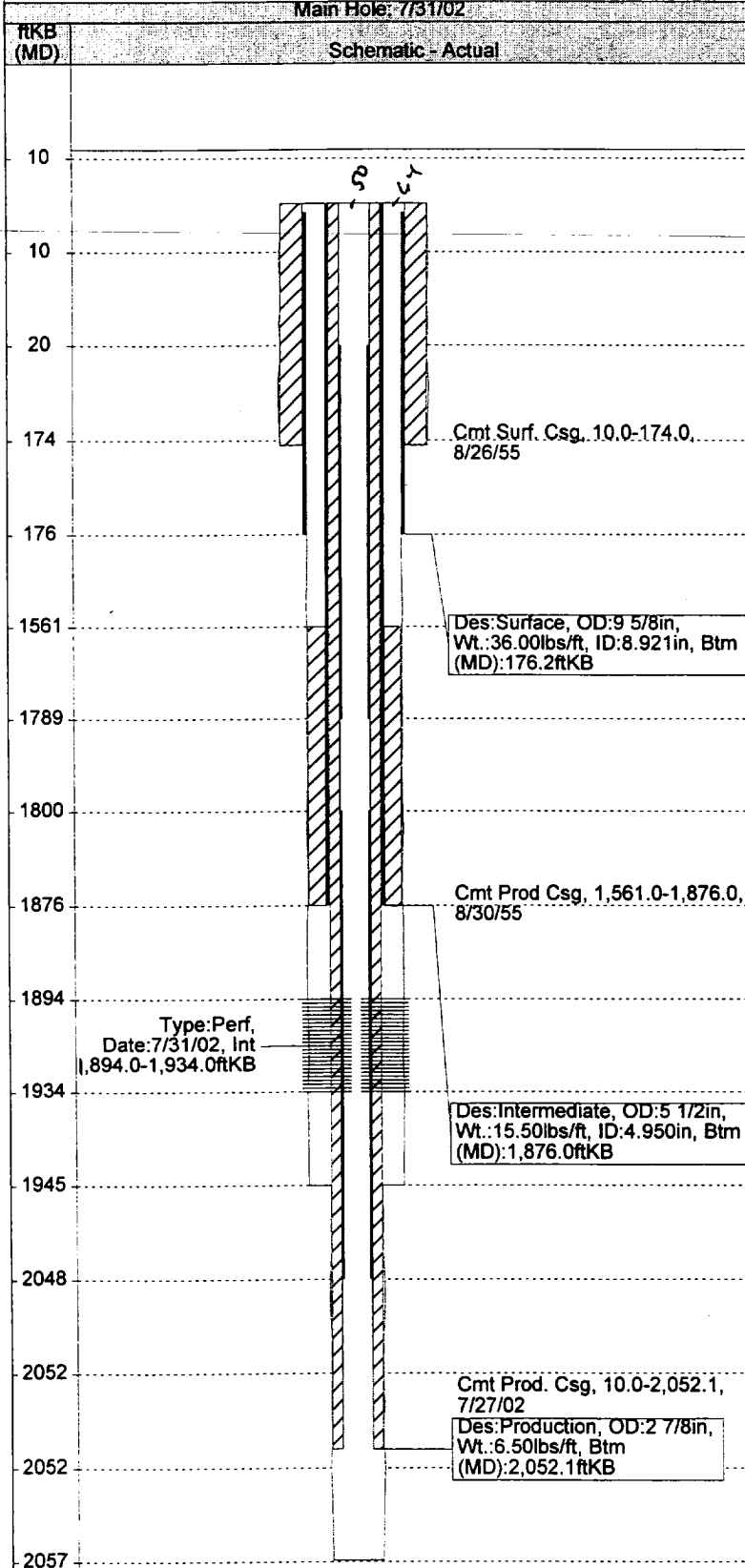
JPM/plh

ZACHRY 10

WellView - Schematic

Asset ID Number	3218200	API Number	3004507727	Operator	BURLINGTON RESOURCES O&G CO LP	County	SAN JUAN	State	NM
KB Elev (ft)	0.00	Ground Elev (ft)	5616.00	Plug Back	Total Depth (ftKB)	2047'	RigKB-Ground Distance (ft)	-5616.00	
Spud Date	8/26/55	Location	Sect: 034, Twp: 029N, Rg: 010W, Poly: D, NMPM	NS Dist (ft)	990.0	NS Flag	FVL	EW Dist (ft)	990.0
				EW Flag	FNL	La/Long Datum		Latitude (DMS)	36° 41' 13.452" N

Schematic



Group List

Wellbore: Main Hole					
SZ (in)		Top (ftKB)		Btm (ftKB)	
13 3/4		10.0		174.0	
8 3/4		174.0		1,945.0	
4 3/4		1,945.0		2,057.0	
Casing Strings: Surface, 176.2					
Item Desc	OD (in)	WT (lbs/ft)	ID (in)	Top (ftKB)	Len (ft)
Casing Joints	9 5/8	36.00	8.921	10.0	166.17
Casing Strings: Intermediate, 1,876.0					
Item Desc	OD (in)	WT (lbs/ft)	ID (in)	Top (ftKB)	Len (ft)
Casing Joints	5 1/2	15.50	4.950	10.0	1866.00
Casing Strings: Production, 2,052.1					
Item Desc	OD (in)	WT (lbs/ft)	ID (in)	Top (ftKB)	Len (ft)
Pup joint	2 7/8			10.0	10.15
Tubing	2 7/8	6.50	2.441	20.2	1769.23
Pup joint	2 7/8			1,789.4	10.16
Tubing	2 7/8	6.50	2.441	1,799.6	247.87
Latch down baffle	2 7/8			2,047.4	4.27
Notched Collar	2 7/8			2,051.7	0.40
Surface, casing, 8/26/55 00:00					
Des		Comment			Top (ftKB)
Cmt Surf. Csg		125 sx Reg. cmt.			10.0
Intermediate, casing, 8/30/55 00:00					
Des		Comment			Top (ftKB)
Cmt Prod Csg		100 sx Reg. cmt.			1,561.0
Production, casing, 7/27/02 00:00					
Des		Comment			Top (ftKB)
Cmt Prod. Csg		75 sx Class H (2.08cf/sx) Pump 27.2 bbl lead cmt & 6.5 bbl tail cmt. TOC @ surf. Good cmt 2047'-300', scattered cmt from 300'-50', and good cmt for 50' to surface.			10.0
Perforations: At 1,894.0-1,934.0 on 7/31/02 07:15					
Zone	Top (ftKB)	Bottom (ftKB)	Comment		
	1,894.0	1,934.0	1894, 96, 98, 1900, 02, 04, 06, 08, 10, 12, 14, 16, 18, 20, 22, 24, 26, 28, 30, 32, 34 (1 spf)		
Jobs					
Job Cat.		End	Summary		
Other		8/8/02			