

NUMBER OF COPIES RECEIVED		5
DISTRIBUTION		
SANTA FE	1	
FILE	1	
U.S.G.S.	2	
LAND OFFICE		
TRANSPORTER	OIL	
	GAS	
PRORATOR OFFICE		
OPERATOR		

NEW MEXICO OIL CONSERVATION COMMISSION

Santa Fe, New Mexico

Form C-101
Revised (12/1/55)

NOTICE OF INTENTION TO DRILL

Notice must be given to the District Office of the Oil Conservation Commission and approval obtained before drilling or recompletion begins. If changes in the proposed plan are considered advisable, a copy of this notice showing such changes will be returned to the sender. Submit this notice in **QUINTUPPLICATE**. One copy will be returned following approval. See additional instructions in Rules and Regulations of the Commission. **If State Land submit 6 Copies Attach Form C-128 in triplicate to first 3 copies of form C-101**

Farmington, New Mexico
(Place)

August 23, 1962
(Date)

OIL CONSERVATION COMMISSION
SANTA FE, NEW MEXICO

Gentlemen:

You are hereby notified that it is our intention to commence the **Drilling** of a well to be known as

Redfern and Herd, Inc.

(Company or Operator)

Salmon

(Lease)

, Well No. **1**, in **P** The well is
(Unit)

located **1190** feet from the **South** line and **990** feet from the

East line of Section **30**, T. **29N**, R. **11W**, NMPM.

(GIVE LOCATION FROM SECTION LINE) **Basin - Dakota** Pool, **San Juan** County

1190 FSL 990 FEL

D	C	B	A
E	F	G	H
L	K	J	I
M	N	O	X P

If State Land the Oil and Gas Lease is No.

If patented land the owner is **Roy Young**

Address **Bloomfield, New Mexico**

We propose to drill well with drilling equipment as follows: **Rotary tools surface to total depth**

The status of plugging bond is **State wide**

Drilling Contractor **Aspen Drilling Co.**

We intend to complete this well in the **Dakota Formation** formation at an approximate depth of **6200** feet.

CASING PROGRAM

We propose to use the following strings of Casing and to cement them as indicated:

Size of Hole	Size of Casing	Weight per Foot	New or Second Hand	Depth	Sacks Cement
12 1/4"	8 5/8"	24#	New	200	150
7 7/8"	4 1/2"	10.5#	New	6200	250

If changes in the above plans become advisable we will notify you immediately.

ADDITIONAL INFORMATION (If recompletion give full details of proposed plan of work.)

Set two stage tool below the Pictured Cliffs Formation and cover Pictured Cliffs with cement. The Dakota formation will then be selectively perforated and sand, water fractured

Approved **8-27**, 19 **62**
Except as follows:

OIL CONSERVATION COMMISSION

By *E. C. Currier*

Sincerely yours,

Redfern and Herd, Inc.

(Company or Operator)

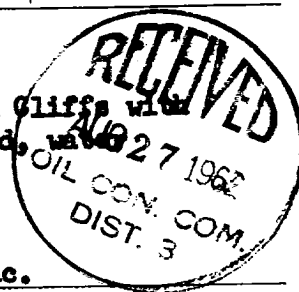
By **Original signed by T. A. Dugan**

Position **Consulting Engineer**

Send Communications regarding well to

Name **T. A. Dugan**

Address **709 Bloomfield Rd. Farmington, New Mexico**



NEW MEXICO OIL CONSERVATION COMMISSION

Well Location and Acreage Dedication Plat

Section A.

Date August 23, 1962

Operator REDFERN AND HERD Lease Salmon
 Well No. 1 Unit Letter I Section 30 Township 29 NORTH Range 11 WEST NMPM
 Located 1190 Feet From the SOUTH Line, 990 Feet From the EAST Line
 County RIO ARRIBA G. L. Elevation 5362.0 Dedicated Acreage 320 Acres
 Name of Producing Formation Dakota Pool Basin - Dakota

1. Is the Operator the only owner in the dedicated acreage outlined on the plat below?
 Yes ☒ No ☐
2. If the answer to question one is "no", have the interests of all the owners been consolidated by communitization agreement or otherwise? Yes ☐ No ☐ . If answer is "yes", Type of Consolidation.
3. If the answer to question two is "no", list all the owners and their respective interests below:

OwnerLand Description

Section B.

Note: All distances must be from outer boundaries of section.

This is to certify that the information in Section A above is true and complete to the best of my knowledge and belief.

Redfern and Herd, Inc.

(Operator)

Original signed by T. A. Dugan

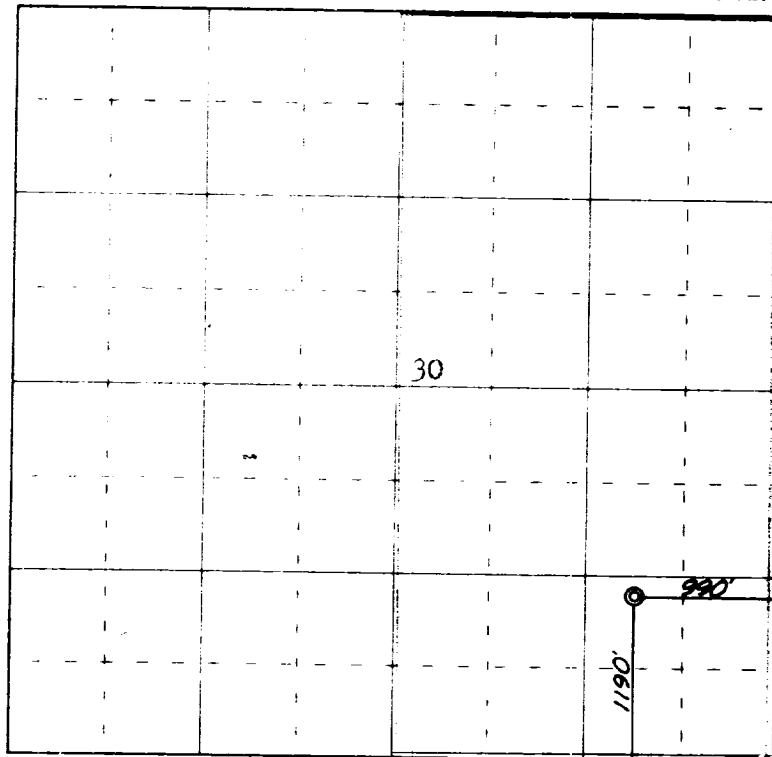
(Representative)

Consulting Engineer

(Address)

709 Bloomfield RdFarmington, New Mexico

Ref. GLO Plat Dated 25 June 1910



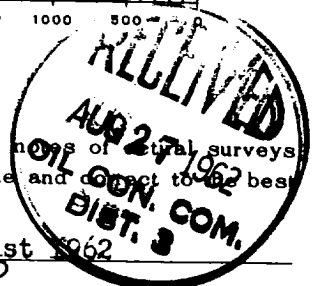
0 330 660 990 1320 1650 1980 2310 2640 2000 1500 1000 500

Scale 4 inches equal 1 mile

This is to certify that the above plat was prepared from field notes of actual surveys made by me or under my supervision and that the same are true and correct to the best of my knowledge and belief.

Date Surveyed 20 August 1962

James P. Lease
 Registered Professional Engineer and/or Land Surveyor
 James P. Lease N. Mex. Reg. No. 1463



Farmington, New Mexico