

## NEW MEXICO OIL CONSERVATION COMMISSION

## NOTICE OF INTENTION TO DRILL

See Rules 101 and 1104.

If changes in the proposed plan are considered advisable, a copy of this notice showing such changes will be returned to the sender. Submit this notice in triplicate. One copy will be returned following approval.

Astec, New Mexico

December 10, 1952

Place

Date

Notice hereby is given that it is our intention to commence the drilling of a well to be known as

F. B. Umbarger, Trustee

Company or Operator

Davis Pooled Unit No. 1

Lease

in SE/4

of Sec. 27, T. 29N, R. 11W, N. M., P. M. Fulcher-Kutz Pool, San Juan County.

N

The well is 1650 feet from (N) (S.) line and 990 feet from

(E.) (W.) line of the above section.

(Give location from section lines. Cross out wrong directions.)

If state land the oil and gas lease is No. Assignment No.

If patented land the owner is Austin Davis, (NE/4; SE/4)

Address

If government land the permittee is Southern Union Gas Co. Assigned to

Address F. B. Umbarger, Box 878, Astec, N.M. (S/2 SE/4; NW/4SE/4)

The lessee is

Address

We propose to drill well with drilling equipment as follows: Spud in with Cable tools,

drill to top of sand with Rotary, and complete with cable tools.

The status of a bond for this well in conformance with Rule 101 of the General Rules and Regulations of the Commission is as follows: \$10,000 Blanket Bond applied for.

We propose to use the following strings of casing and to land or cement them as indicated:

Size of Hole	Size of Casing	Weight Per Foot	New or Second Hand	Depth	Landed or Cemented	Sacks Cement
12 1/2" 8-3/4"	10-3/4" 5 1/2"		Second Hand "	120' 1800'	Cemented to surface Cemented	250

If changes in the above plans become advisable we will notify you before cementing or landing casing. We estimate that the first productive oil or gas sand should occur at a depth of about 1800 feet.

Additional information: I propose to drill a well to and through the Pictured Cliffs ss. using Cable tools to set approximately 120' of 10-3/4" surface casing, Rotary equipment to top of Pictured Cliffs, and drill the sand and complete with Cable tools. If Production is indicated we will shoot the section with approximately 3 qts. to the foot of SMO and complete as gas well, running 1" tubing to the bottom. We will run a Geoelectric log and may test the Farmington-Fruitland if indicated by the electric log.

Approved Dec 11, 1952

except as follows:

F. B. Umbarger, Trustee

Company or Operator

By

Position Trustee

Send communications regarding well to:

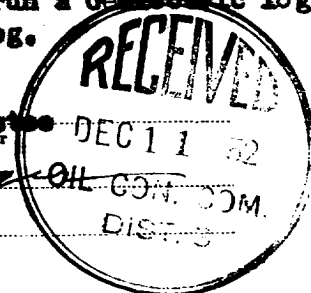
Name F. B. Umbarger

Address Box 878, Astec, New Mexico

OIL CONSERVATION COMMISSION

By

Title Oil & Gas Inspector, Dist. #3

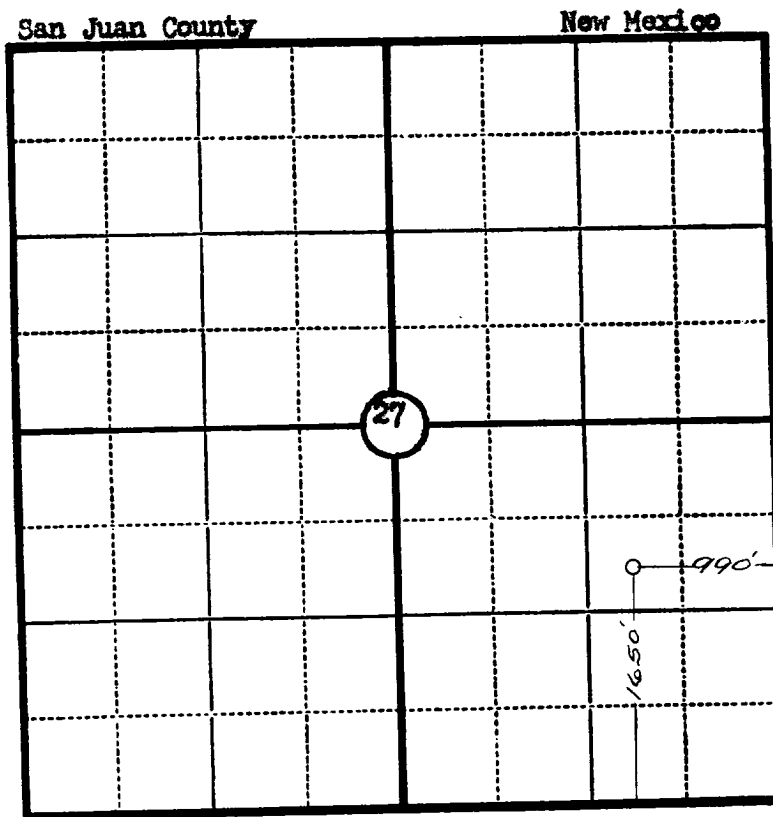


Company..... F. B. Umbarger .....

Lease..... Well No.....

Sec..... 27 ....., T..... 29 N. ....., R. 11 W. ....., N.M.P.M. .....

Location..... 1650' from the South line and 990' from  
the East line. .....



Scale—4 inches equal 1 mile.

This is to certify that the above plat was prepared from field notes of actual surveys made by me or under my supervision and that the same are true and correct to the best of my knowledge and belief.

*Charles J. Finklea*

Seal:

Registered Professional  
Engineer and Land Surveyor.

Charles J. Finklea  
N. Mex. Reg. No. 1302



Surveyed ..... December 9 ....., 19... 52 .....

OIL CONSERVATION COMMISSION  
 AZTEC DISTRICT OFFICE

No. Copies Received 5

DISTRIBUTION

	NO. COPIES	
Operator	1	
Santa Fe	1	
San Juan County		
State Land Office		
U. S. G. S.	2	
Transporter		
File	1	✓