

Company..... F. B. Umbarger.....

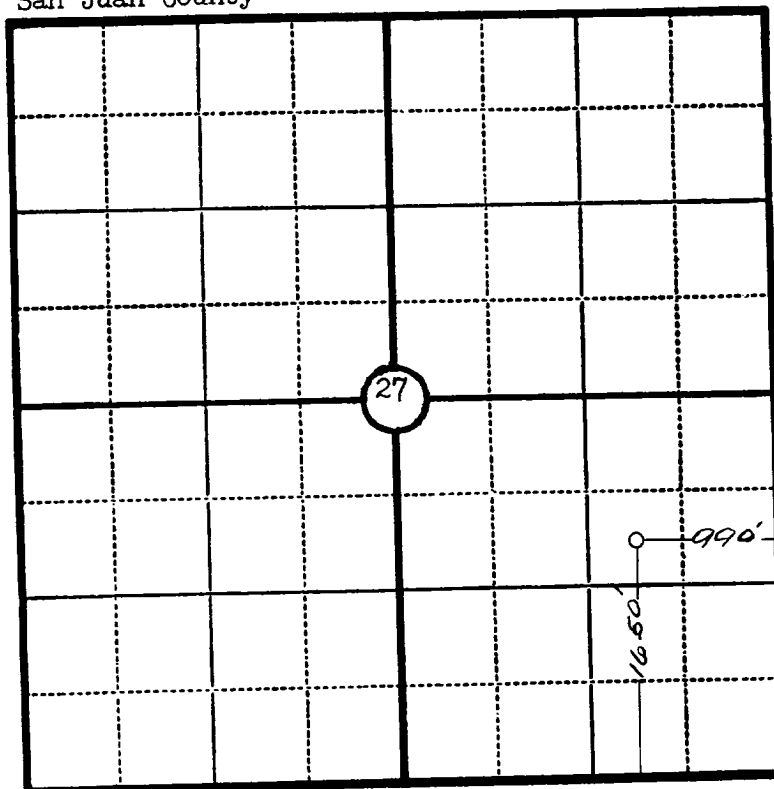
Lease..... Well No.....

Sec. 27....., T. 29 N....., R. 11 W., N.M.P.M.....

Location 1650' from the South line and 990' from  
the East line.

San Juan County

New Mexico



Scale—4 inches equal 1 mile.

This is to certify that the above plat was prepared from field notes of actual surveys made by me or under my supervision and that the same are true and correct to the best of my knowledge and belief.

*Charles J. Finklea*

Seal:

Registered Professional  
Engineer and Land Surveyor.

Charles J. Finklea  
N. Mex. Reg. No. 1302

Surveyed ..... December 9....., 19... 52

OIL CONSERVATION COMMISSION

AZTEC DISTRICT OFFICE

No. Copies Received 5

DISTRIBUTION

	NO. FURNISHED	
Operator	<u>1</u>	
Santa Fe	<u>1</u>	
Proration Office		
State Land Office		
U. S. G. S.	<u>2</u>	
Transporter		
File	<u>1</u>	