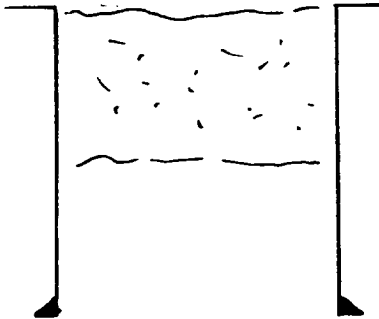
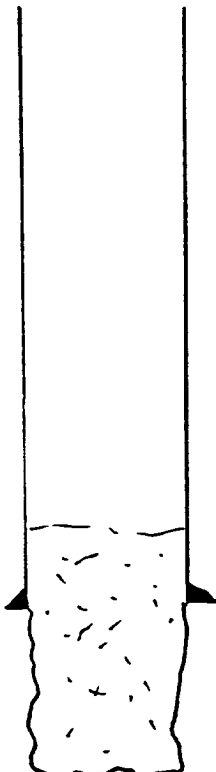


F.B. UMBARGER, TRUSTEE  
Davis Pooled Unit #1  
I-27-29N-11W



17 sx plug in surface

10 3/4 @ 110' w/30 sx



Cut @ 960'

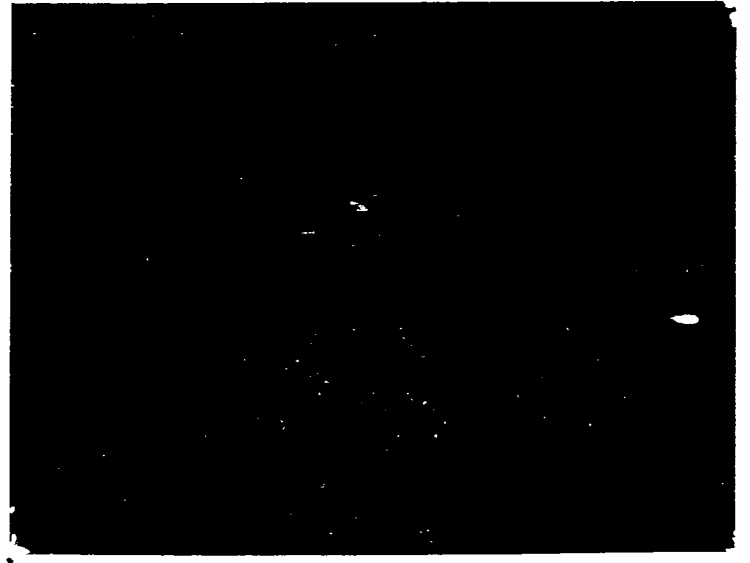
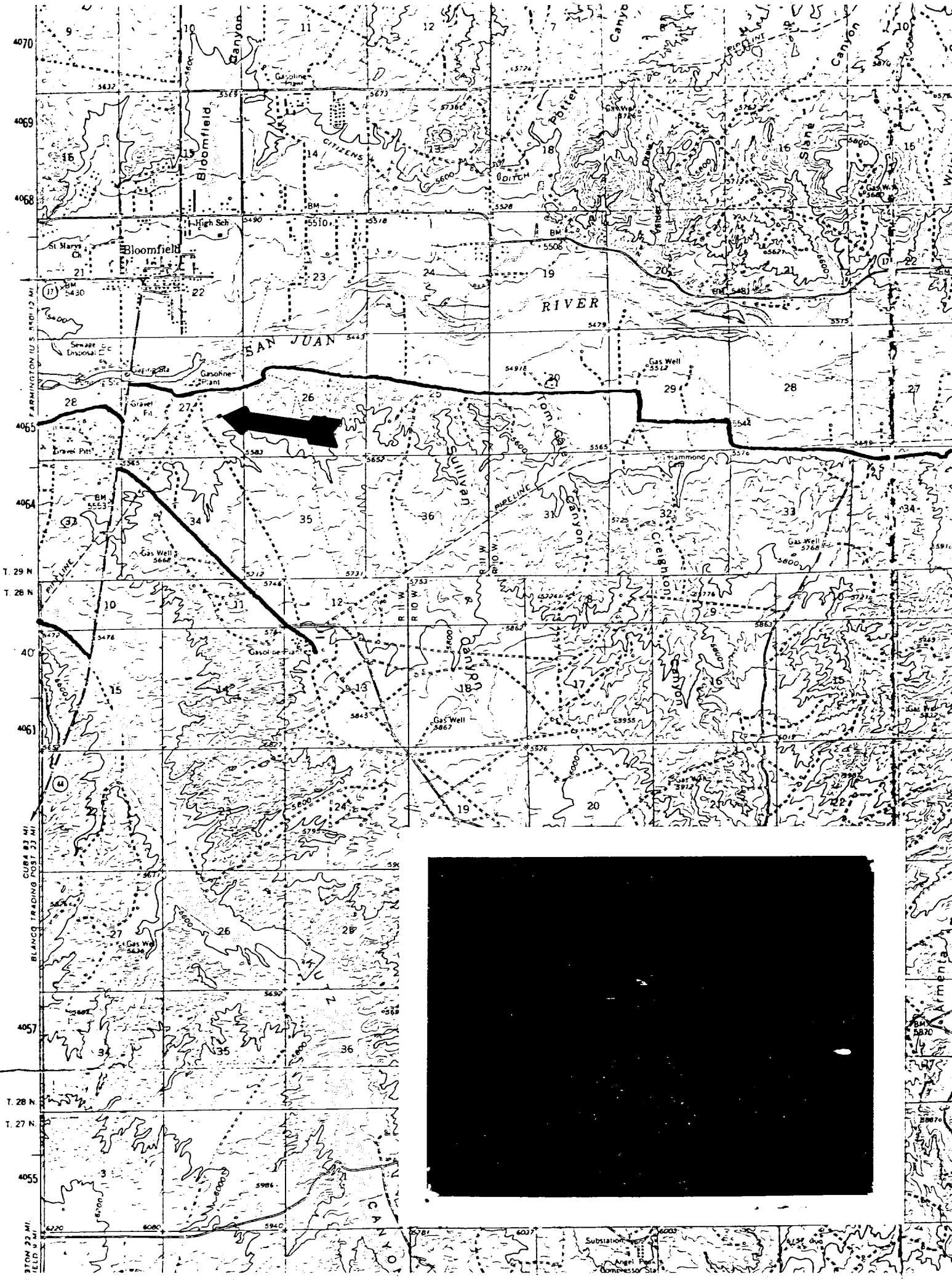
50 sx plug in bottom of hole

5 1/2" @ 1717' w/250 sx

TD 1800'

BEFORE EXAMINER STAMETS OIL CONSERVATION DIVISION	
EXHIBIT NO.	<u>1</u>
CASE NO.	<u>7577</u>
Submitted by	<u>Choy</u>
Hearing Date	<u>4/14/02</u>

STATE BARBERS ASSOCIATION
CHIEF EXAMINER STAFF
EXHIBIT NO. _____
CASE NO. _____
EXAMINED BY _____
DATE _____



DIVISION APPROVED PLUGGING PROGRAM

F.B. Umbarger, Trustee  
Davis Pooled Unit #1  
I-27-29N-11W

- (1) Clean out hole to top of 5 1/2" casing stub at 960'.
- (2) Set cement plug from 960'-700' WOC at least 6 hours.
- (3) Go in hole with tubing and tag top of plug, if cement is 700' or above go to step 4. If cement is below 700' fill to 700'.
- (4) Set a cement plug 250'-50'. Watch fluid level for one hour. If fluid does not drop significantly go to step 5. If fluid level drops more than 20' WOC 6 hours and tag top of plug #2. If below 70' fill to 50'.
- (5) Set a top plug and erect dry hole merker with 10 sacks of cement.
- (6) Fill pits. Clean and level location.

All plugs will be Class A,B or C cement with or without an accelerator.

Note: This well is leaking gas around the base of the dry hole marker and may have to be killed..