

NEW MEXICO
OIL CONSERVATION COMMISSION

Form C-128

Well Location and/or Gas Proration Plat

Date February 24, 1956

Operator Stanolind Oil and Gas Company Lease Abrams Gas Unit A

Well No. 1 Section 26 Township 29 North Range 10 West NMPM

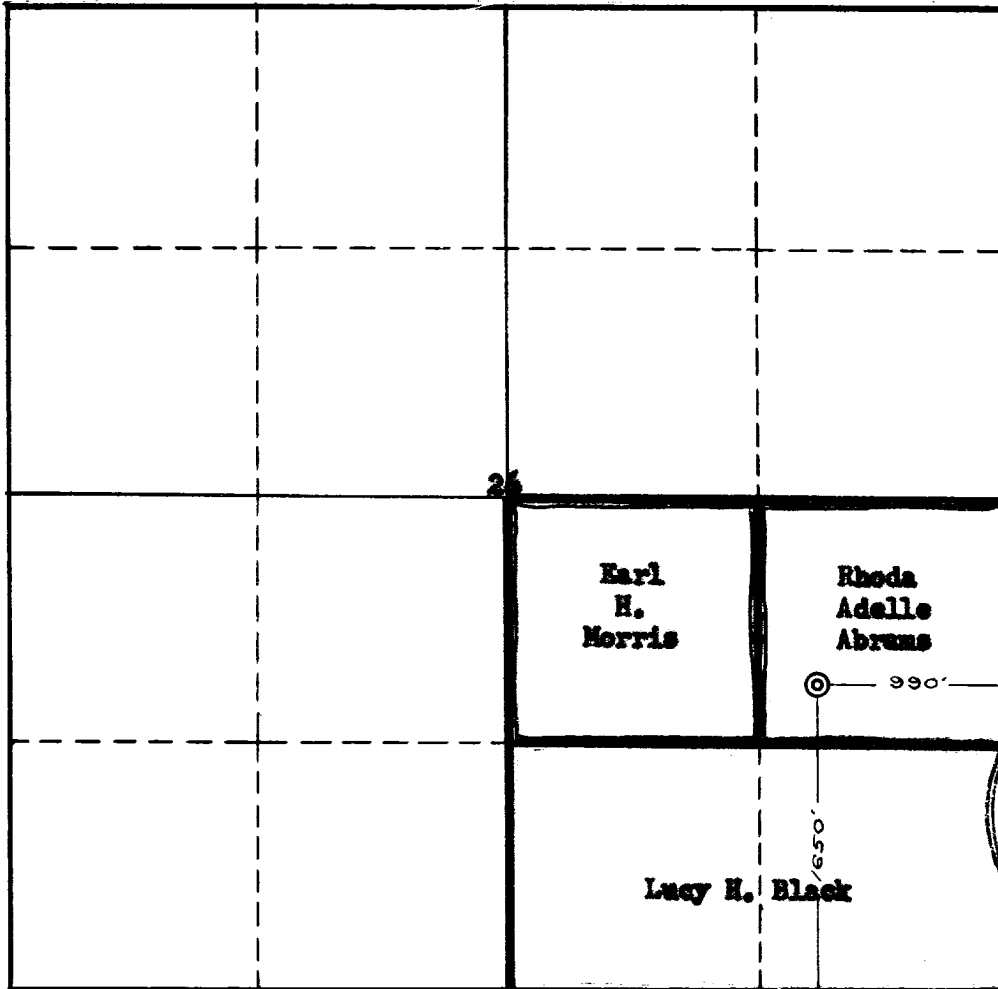
Located 1650 Feet From South Line, 990 Feet From East Line,

San Juan

County, New Mexico. G. L. Elevation to be reported later

Name of Producing Formation Pictured Cliffs Pool Astee-
Pictured Cliffs Dedicated Acreage 160 ✓

(Note: All distances must be from outer boundaries of Section)



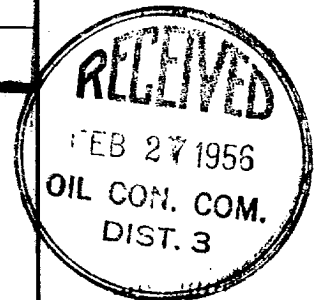
SCALE: 1"=1000'

1. Is this Well a Dual Comp. ? Yes No X.
2. If the answer to Question 1 is yes, are there any other dually completed wells within the dedicated acreage ? Yes No X.

Name John M. Clark *J M Clark*
Position Field Engineer
Representing Stanolind Oil & Gas Company
Address Box 457, Farmington, New Mexico

This is to certify that the above plat was prepared from field notes of actual surveys made by me or under my supervision and that the same are true and correct to the best of my knowledge and belief.

Date Surveyed February 18, 1956
Ernest V. Cochran
Registered Professional Engineer and/or
Land Surveyor **FOUR STATES OIL FIELD SURVEYS**
FARMINGTON, NEW MEXICO



OIL CONSERVATION COMMISSION
AZTEC DISTRICT OFFICE

No. Copies Received **5**

DISTRIBUTION

	NO. COPIES ISSUED	
Operator	1	
Santa Fe	1	
Proration Office		
State Land Office		
U. S. G. S.	2	
Transporter		
File	1	<input checked="" type="checkbox"/>