

FRANCIS L. HARVEY
Pinkstaff Estate #2
A-29-29N-10W

8 5/8 " @ 94' W/100 sx

Perforated 892'-936'
Plugged W/16 sx 762'-947'

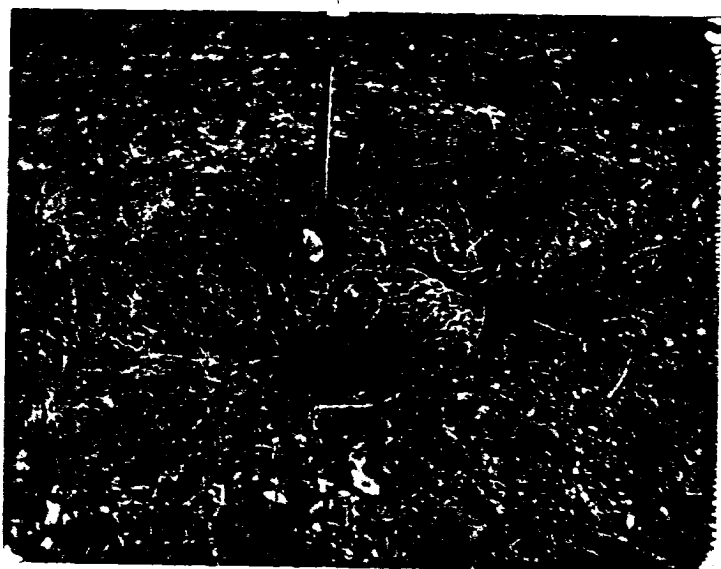
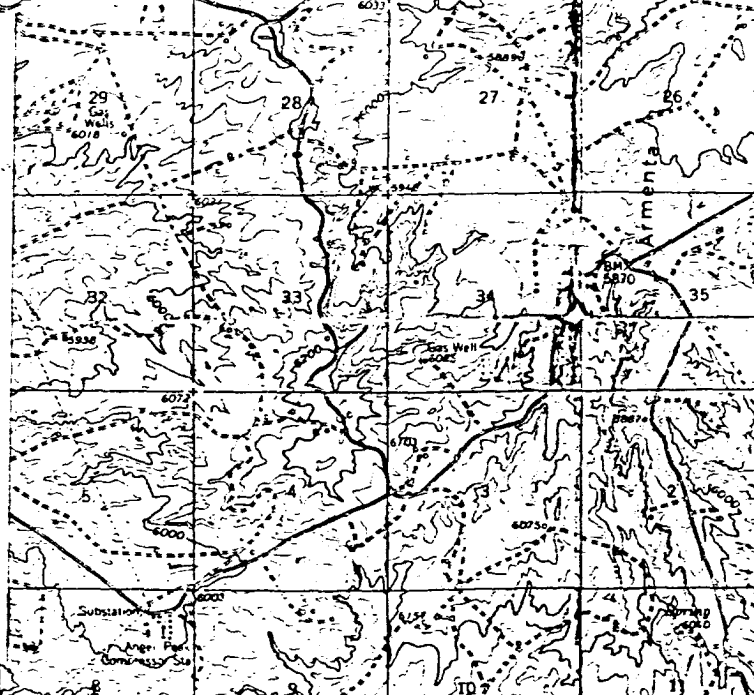
TD 960'

4 1/2 " @ 960' W/100 sx

BEFORE EXAMINER STAMETS OIL CONSERVATION DIVISION	
EXHIBIT NO.	<u>1</u>
CASE NO.	<u>7538</u>
Submitted by	<u>Clem</u>
Hearing Date	<u>4/14/82</u>

OFFICE OF THE ATTORNEY GENERAL
DIVISION OF INVESTIGATION
EXHIBIT NO. _____
DATE _____
PAGE NO. _____
RECEIVED BY _____
RECEIVED BY _____

1. RACE 2. \mathcal{N}^2 KAD-3-A
3. EST. 4. \mathcal{N}^2 KAS-AKF



10 11 12

DIVISION APPROVED PLUGGING PROGRAM

Francis L. Harvey
Pinkstaff Estate #2
A-29-29N-10W

- (1) Go in 4 1/2" casing with tubing and a bit and tag bottom plug at 762'. Drill on plug long enough to establish that plug is in place. If well does not have a bottom plug clean out to 947' and set a plug 947'-750' inside the 4 1/2" casing.
- (2) Perforate casing at 400' and set a plug 400'-250' in and outside casing. WOC 6 hours and tag plug. If plug is in place go to step 3. If below 270' fill to 250'.
- (3) Perforate casing at 150' and set a plug 150'-50' in and outside casing. If water flow is shut off go to step 4. If not, shut well in long enough for cement to set. If water flow is shut off go to step 4. If not continue recementing until flow is stopped.
- (4) Set a top plug and erect dry hole marker.
- (5) Fill pits. Clean and level location.

All plugs will be Class A,B or C cement with or without an accelerator.

Note: This well is flowing a large amount of fresh water up the 4 1/2" casing.