

NEW MEXICO OIL CONSERVATION COMMISSION  
Santa Fe, New Mexico

NOTICE OF INTENTION TO DRILL OR RECOMPLETE

Notice must be given to the District Office of the Oil Conservation Commission and approval obtained before drilling or recompletion begins. If changes in the proposed plan are considered advisable, a copy of this notice showing such changes will be returned to the sender. Submit this notice in QUINTUPPLICATE. One copy will be returned following approval. See additional instructions in Rules and Regulations of the Commission. If State Land submit 6 Copies

Albuquerque, New Mexico

March 10, 1960

(Place)

(Date)

OIL CONSERVATION COMMISSION  
SANTA FE, NEW MEXICO

Gentlemen:

You are hereby notified that it is our intention to commence the (Drilling) (Recompletion) of a well to be known as

Hartman Bloomfield Unit

(Company or Operator)

1

P

Well No.

(Unit)

The well is

990

(Lease)

South

990

feet from the

located East feet from the

22

29 North

11 West

NMPM.

Line of Section

Undesignated Dakota

San Juan

County

(GIVE LOCATION FROM SECTION LINE)

If State Land the Oil and Gas Lease is No.

various small tracts

If patented land the owner is

Bloomfield, New Mexico

Address

Rotary tools surface

We propose to drill well with drilling equipment as follows:

to total depth

Approved Statewide

The status of plugging bond is

Drilling Contractor E. P. Campbell

1603 Broadway

Lubbock, Texas

We intend to complete this well in the Dakota formation

6400

feet.

formation at an approximate depth of

CASING PROGRAM

We propose to use the following strings of Casing and to cement them as indicated:

Size of Hole	Size of Casing	Weight per Foot	New or Second Hand	Depth	Sacks Cement
13 3/4"	9 5/8"	32.3	New	300'	225'
8 3/4"	5 1/2"	15 1/2	New	6400'	*200
*5 1/2" casing with DV tool below Pictured Cliffs cemented with 50 sac					

If changes in the above plans become advisable we will notify you immediately.

ADDITIONAL INFORMATION (If recompletion give full details of proposed plan of work.)

Approved  
Except as follows:

3-14, 1960

Sincerely yours,

E. P. Campbell

(Company or Operator)

By

Ben Donegan

Position

Geologist

Send Communications regarding well to

Name

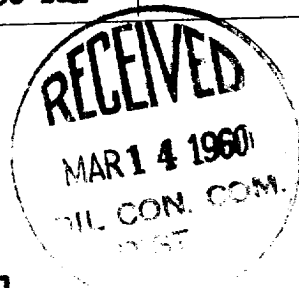
Ben Donegan, 7114 Central SE

Address

Albuquerque, New Mexico

OIL CONSERVATION COMMISSION

By



NEW MEXICO OIL CONSERVATION COMMISSION

Well Location and Acreage Dedication Plat

Section A.

Date March 10, 1960

Operator E.P. Campbell Lease Hartman-Bloomfield Unit  
Well No. 1 Unit Letter P Section 22 Township 29 North Range 11 West NMPM  
Located 990 Feet From South Line, 990 Feet From East Line  
County San Juan G. L. Elevation 5433 Dedicated Acreage 320 Acres  
Name of Producing Formation Dakota Pool Undesignated

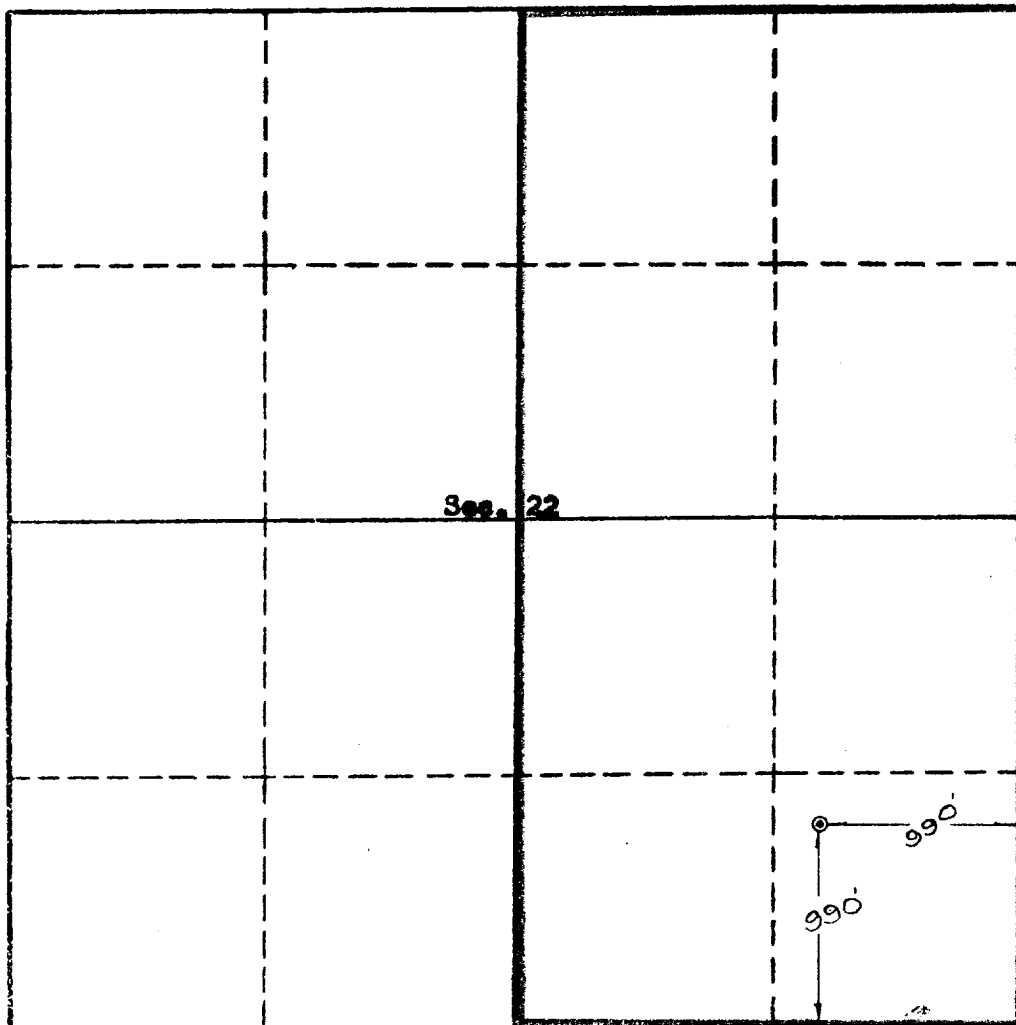
1. Is the Operator the only owner\* in the dedicated acreage outlined on the plat below?  
Yes X No
2. If the answer to question one is "no," have the interests of all the owners been consolidated by communitization agreement or otherwise? Yes        No       . If answer is "yes,"  
Type of Consolidation
3. If the answer to question two is "no," list all the owners and their respective interests below:

Owner

Land Description



Section. B



This is to certify that the information in Section A above is true and complete to the best of my knowledge and belief.

E.P. Campbell  
(Operator)

Bern Dinegan  
(Representative)

7114 Central St  
Albuquerque, N.M.

This is to certify that the well location shown on the plat in Section B was plotted from field notes of accurate surveys made by me or under my supervision and that the same is true and correct to the best of my knowledge and belief.

Date Surveyed Feb. 9, 1960

Ernest V. Echoshawk  
Ernest V. Echoshawk  
Registered Land Surveyor.

Certificate No. 1545



STATE OF NEW MEXICO		
OIL CONSERVATION COMMISSION		
AZUL C DISTRICT OFFICE		
NUMBER OF COPIES RECEIVED		5
DISTRIBUTION		
SANTA FE		
FILE		
U.S.G.S.		
LAND OFFICE		
TRANSPORTER	OIL	
	GAS	
PRODUCTION OFFICE		
OPERATOR		