

NEW MEXICO
OIL CONSERVATION COMMISSION

Form C-128

Well Location and/or Gas Proration Plat

Date

Operator R. E. Jackson Lease Eugene M. Davis January 12, 1956

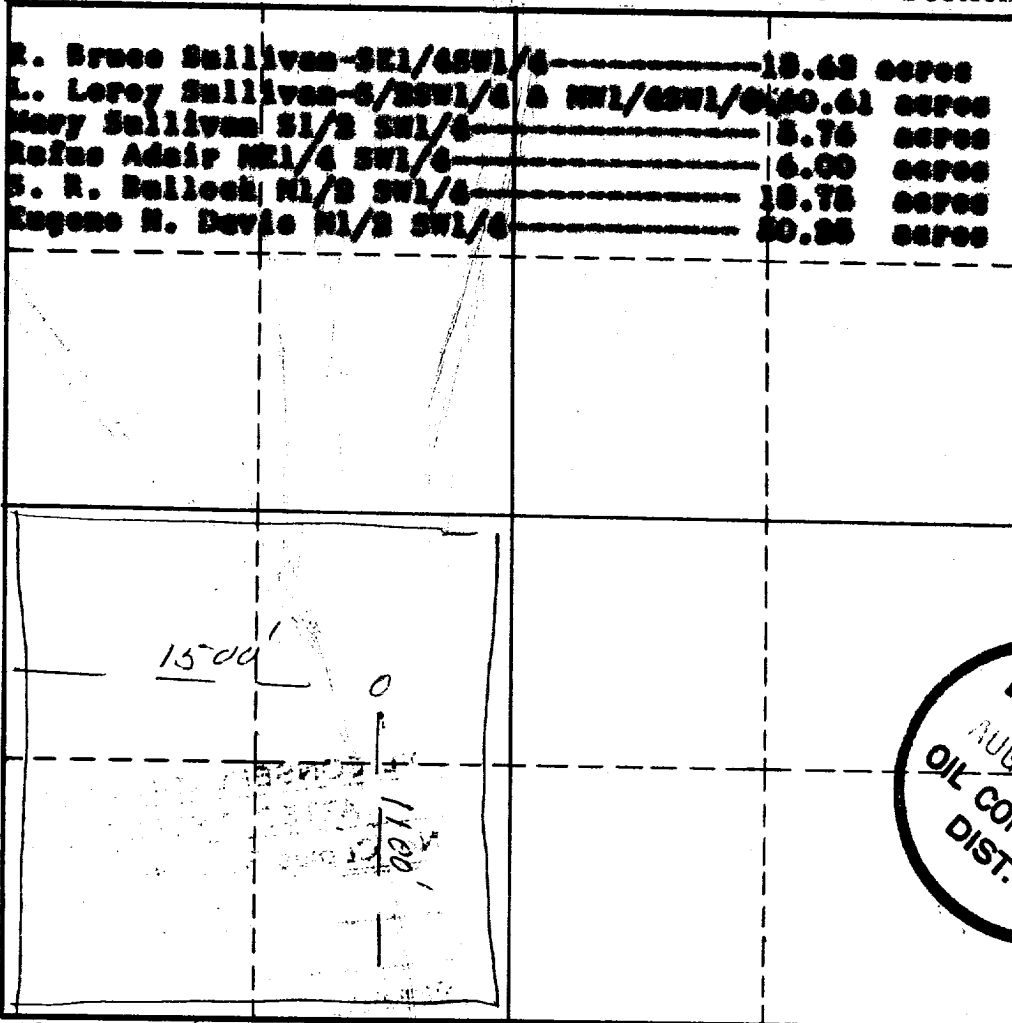
Well No. 1 Section SW1/4-24 Township 29N Range 11W NMPM

Located 1500' Feet From South Line, 1100' Feet From West Line,

San Juan County, New Mexico. G. L. Elevation 5445

Name of Producing Formation Frontland Pool Pitcher-Kate Dedicated Acreage 160

(Note: All distances must be from outer boundaries of Section)



SCALE: 1"=1000'

1. Is this Well a Dual Comp. ? Yes ☒ No ☐
2. If the answer to Question 1 is yes, are there any other dually completed wells within the dedicated acreage? Yes ☐ No ☒

This is to certify that the above plat was prepared from field notes of actual surveys made by me or under my supervision and that the same are true and correct to the best of my knowledge and belief.

Name R. E. Jackson
Position Operator
Representing Jackson & Woodruff Oil Co.
Address Jackson & Woodruff Oil Co.

Date Surveyed 10-22-55
Registered Professional Engineer and/or Land Surveyor

OIL CONSERVATION COMMISSION
 AZTEC DISTRICT OFFICE
 No. Copies Received 5

DISTRIBUTION		
	NO. FURNISHED	
Operator		
Santa Fe	2	
Proration Office	1	
State Land Office		
U. S. G. S.	1	
Transporter		
File	1	✓