

NEW MEXICO OIL CONSERVATION COMMISSION
Santa Fe, New Mexico

NOTICE OF INTENTION TO DRILL OR RECOMPLETE

Notice must be given to the District Office of the Oil Conservation Commission and approval obtained before drilling or recompletion begins. If changes in the proposed plan are considered advisable, a copy of this notice showing such changes will be returned to the sender. Submit this notice in QUINTUPLICATE. One copy will be returned following approval. See additional instructions in Rules and Regulations of the Commission.

Astec, New,, Mexico

(Place)

May 27, 1955

(Date)



OIL CONSERVATION COMMISSION
SANTA FE, NEW MEXICO

Gentlemen:

You are hereby notified that it is our intention to commence the (Drilling) (Recompletion) of a well to be known as

Basin Natural Gas Corporation

(Company or Operator)

Davis

(Lease)

, Well No. **1**, in (Unit) The well is

located **2275** feet from the **South** line and **695** feet from the **East** line of Section **23**, T. **29-N**, R. **11-W**, NMPM.

(GIVE LOCATION FROM SECTION LINE)

Pool, **San Juan** County

If State Land the Oil and Gas Lease is No.

If patented land the owner is **Davis, Sullivan**

Address **Milford, Utah, Bloomfield, New Mexico**

We propose to drill well with drilling equipment as follows:

Cable Tools and Rotary Rig

The status of plugging bond is **U. S. Gas. #38792, approved by W. B. Mason, Santa Fe, per letter of May 17, 1955**

Drilling Contractor **F. B. Umbarger**

We intend to complete this well in the **Picture Cliff Formation** formation at an approximate depth of **1650** feet.

CASING PROGRAM

We propose to use the following strings of Casing and to cement them as indicated:

Size of Hole	Size of Casing	Weight per Foot	New or Second Hand	Depth	Sacks Cement
12 1/2"	10 3/4"	32 lb	New	80	20-25
8 3/4"	5 1/2"	15 lb	New	1650	250

If changes in the above plans become advisable we will notify you immediately.

ADDITIONAL INFORMATION (If recompletion give full details of proposed plan of work.)

If production is indicated we will Sand Oil Free by the Halliburton Oil Well Cementing Company and complete as gas well, running 1" tubing to the bottom. We will run a Geoelectric Log and may test the Fruitland Sand if indicated by the log.

JUN 13 1955

Approved....., 19.....
Except as follows:

OIL CONSERVATION COMMISSION
Original Signed Emery C. Arnold

Sincerely yours,

Basin Natural Gas Corporation

(Company or Operator)

By **M. Krawouch**

Position **Asst. Treas.**
Send Communications regarding well to

Name **Basin Natural Gas Corporation**

Address **109 W Chase St.
Astec, New Mexico**

Title **Oil and Gas Inspector Dist. #3.**

**OIL CONSERVATION COMMISSION
AZTEC DISTRICT OFFICE**

No. Copies Received 5

DISTRIBUTION

	NO. FURNISHED	
Operator	1	
Santa Fe	1	
Proration Office		
State Land Office		
U. S. G. S.	2	
Transporter		
File	1	✓



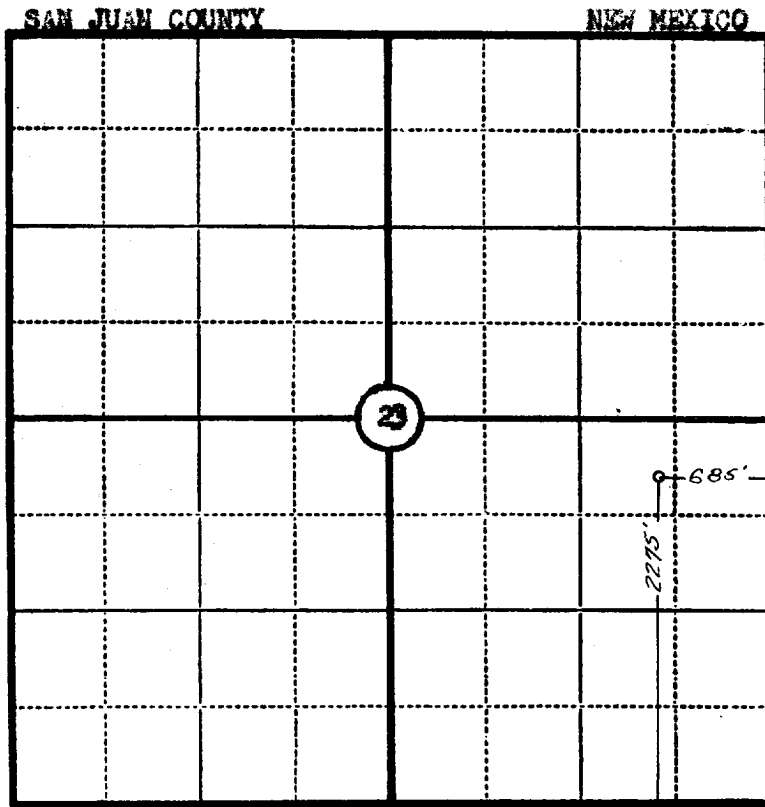
Company BASIN NATURAL GAS CORPORATION

Lease Davie Well No. 1

Sec. 23, T. 29 N., R. 11 W., N.M.P.M.

Location 2275' FROM THE SOUTH LINE AND 685' FROM THE EAST LINE.

Elevation 5448.3 UNGRADED GROUND.



Scale—4 inches equal 1 mile.

This is to certify that the above plat was prepared from field notes of actual surveys made by me or under my supervision and that the same are true and correct to the best of my knowledge and belief.

Seal:

James P. Leese
 Registered
 Land Surveyor.

JAMES P. LEESE
N. MEX. REG. NO. 1469

Surveyed 26 May, 1955



May 27, 1955

C
Basin Natural Gas Corporation
P. O. Box 878
Astec, New Mexico

O
Attention: Mr. F. B. Umbarger

Gentlemen:

P
Reference is made to your request to drill an unorthodox well location (Davies Well No. 1), to be located 2275 feet from the South line and 685 feet from the East line of Section 23, Township 27 North, Range 11 West, San Juan County, New Mexico.

Y
Under the authority granted me by the provisions of Rule 104, paragraph (f), approval is hereby granted to drill the proposed well at the above designated location.

Very truly yours,

W. B. Macey
Secretary-Director

WBM:jh

cc: Oil Conservation Commission
Astec, New Mexico
U. S. Geological Survey
Farmington, New Mexico



May 31 1955

Department of the Interior
Bureau of Land Management
Washington, D.C.

Attention: Mr. J. B. Ginn

Enclosure

Reference is made to your report of May 10, 1955, regarding the proposed well at the location of well No. 1, to be located 250 feet from the corner line and 600 feet from the line of section 23, Township 2 S., Range 11 West, Sec. 12, Twp. 2 S., R. 11 W., New Mexico.

Under the authority granted me by the provisions of Act 101, approved July 1, 1954, and the approval of the proposed well at the above described location.

Very truly yours,

Secretary

U.S. Geological Survey
Washington, D.C.
New Mexico
Bureau of Land Management
Washington, D.C.