

NEW MEXICO OIL CONSERVATION COMMISSION  
Santa Fe, New Mexico

MISCELLANEOUS NOTICES

Submit this notice in TRIPPLICATE to the District Office, Oil Conservation Commission, before the work specified is to begin. A copy will be returned to the sender on which will be given the approval, with any modifications considered advisable, or the rejection by the Commission or agent, of the plan submitted. The plan as approved should be followed, and work should not begin until approval is obtained. See additional instructions in the Rules and Regulations of the Commission.

Indicate Nature of Notice by Checking Below

NOTICE OF INTENTION TO CHANGE PLANS		NOTICE OF INTENTION TO TEMPORARILY ABANDON WELL		NOTICE OF INTENTION TO DRILL DEEPER	
NOTICE OF INTENTION TO PLUG WELL		NOTICE OF INTENTION TO PLUG BACK		NOTICE OF INTENTION TO SET LINER	X
NOTICE OF INTENTION TO SQUEEZE		NOTICE OF INTENTION TO ACIDIZE		NOTICE OF INTENTION TO SHOOT (Nitro)	
NOTICE OF INTENTION TO GUN PERFORATE	X	NOTICE OF INTENTION (OTHER)		NOTICE OF INTENTION (OTHER)	

OIL CONSERVATION COMMISSION  
SANTA FE, NEW MEXICO

Aztec, New Mexico  
(Place)

March 1957  
(Date)

Gentlemen:

Following is a Notice of Intention to do certain work as described below at the Pauly-Trilon

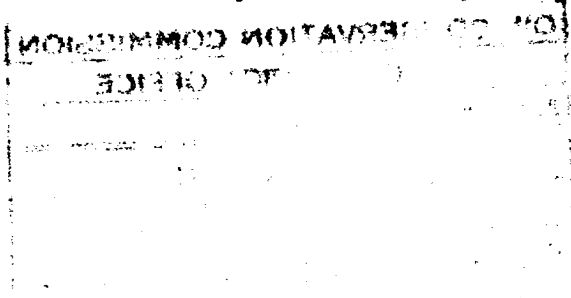
Salmon Well No. IX in IX (Unit)

SW 1/4 SW 1/4 of Sec. 15, T. 29N, R. 11W, NMPM., Pool

San Juan County.

FULL DETAILS OF PROPOSED PLAN OF WORK  
(FOLLOW INSTRUCTIONS IN THE RULES AND REGULATIONS)

Set 4-1/2" to 1760' and circulate cement (approx. 300 sacks), with float shoe. Perforate 1726-1738 with 48 shots, sand-water frac with 20,000# and 20,000 gals.



Approved APR 15 1957, 19  
Except as follows:

Approved  
OIL CONSERVATION COMMISSION  
Original Signed Emery C. Arnold  
By  
Title Oil and Gas Inspector Dist. #3.

Pauly-Trilon  
Company or Operator

By H. Nichols

Position Agent  
Send Communications regarding well to:

Name H. Nichols

Address 1406 Mile High Center  
Denver, Colo.

**OIL CONSERVATION COMMISSION**

**AZTEC DISTRICT OFFICE**

No. Copies Received 5

**DISTRIBUTION**

	NO EXCOPIED	
Operator	<u>3</u>	
Santa Fe	<u>1</u>	
Proration Office		
State Land Office		
U. S. G. S.		
Transporter		
File	<u>1</u>	<input checked="" type="checkbox"/>