

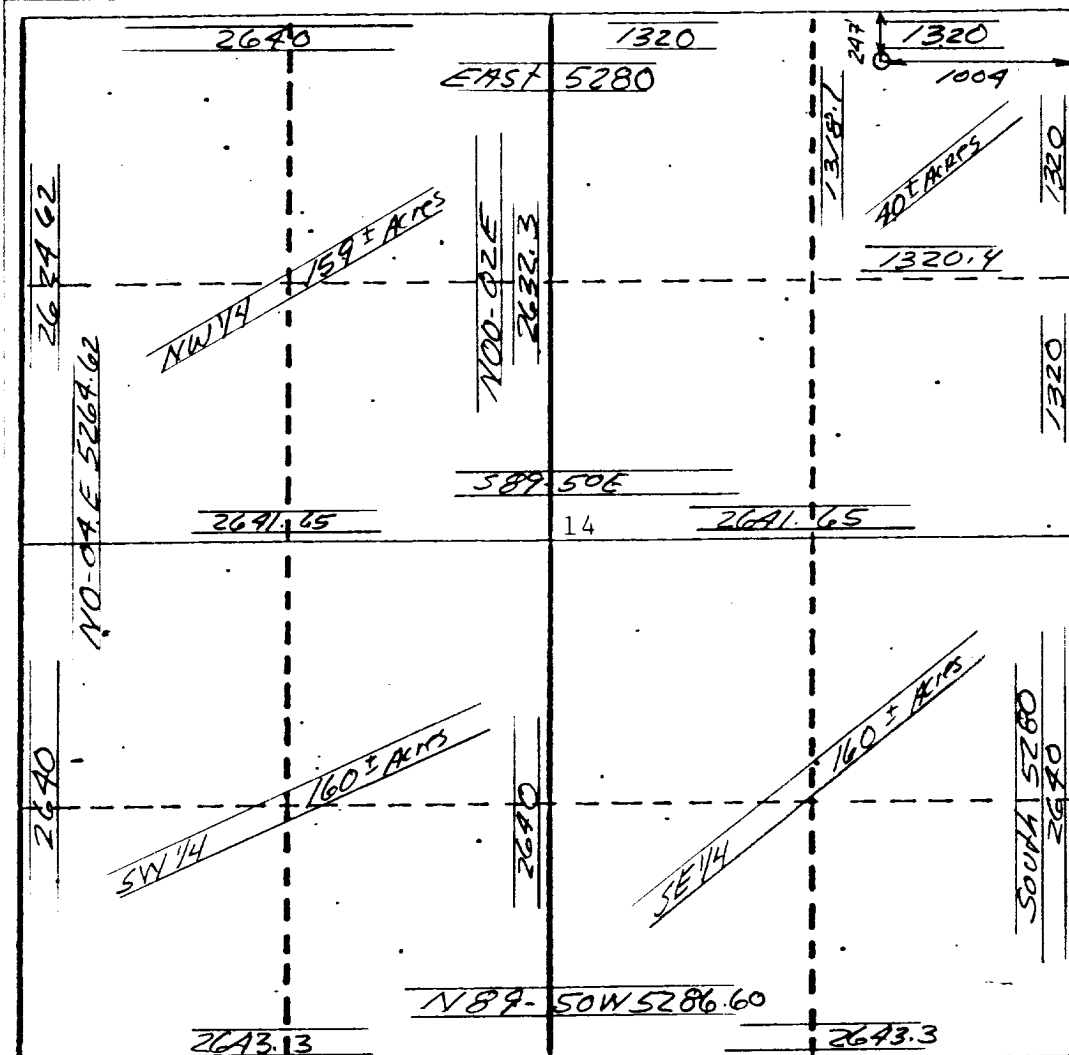
Supersedes C-12
Effective 1-4-68

Operator AMENDA		Lease VERGIE SCHENK		Well No. 1
Unit Letter A	Section 14	Township 29 NORTH	Range 13 WEST	County SAN JUAN
Actual Footage Location of Wells 247 feet from the NORTH line and 1004 feet from the EAST line				
Ground Level Elev. 5340	Producing Formation Fannington	Pool C.C.		Dedicated Acres Acres

- ☐ Yes ☐ No If answer is "yes," type of consolidation

If answer is "no," list the owners and tract descriptions which have actually been consolidated. (Use reverse side of this form if necessary.) _____

No allowable will be assigned to the well until all interests have been consolidated (by communitization, unitization, forced-pooling, or otherwise) or until a non-standard unit, eliminating such interests, has been approved by the Commission.



I hereby certify that the information contained herein is true and complete to the best of my knowledge and belief.

Notes

Position

Company

Date _____

I hereby certify that the well location shown on this plot was plotted from field notes of actual surveys made by me or under my supervision, and that the same is true and correct to the best of my knowledge and belief.

Date Surveyed 9/1/78

AUGUST 15, 1988

Registered Professional Engineer
and/or Land Surveyor

GEORGE R. TOMPKINS

Certificate No.

7259