

NEW MEXICO OIL CONSERVATION COMMISSION  
Santa Fe, New Mexico

Form C-101  
Revised (12/1/55)

NOTICE OF INTENTION TO DRILL

Notice must be given to the District Office of the Oil Conservation Commission and approval obtained before drilling or recompletion begins. If changes in the proposed plan are considered advisable, a copy of this notice showing such changes will be returned to the sender. Submit this notice in **QUINTUPPLICATE**. One copy will be returned following approval. See additional instructions in Rules and Regulations of the Commission. If State Land submit 6 Copies Attach Form C- 128 in triplicate to first 3 copies of form C-101

**Farmington, New Mexico**  
(Place)

**August 1, 1956**  
(Date)

OIL CONSERVATION COMMISSION  
SANTA FE, NEW MEXICO

Gentlemen:

You are hereby notified that it is our intention to commence the Drilling of a well to be known as

**Delhi-Taylor Oil Corporation**  
(Company or Operator)

**Theodore Archuleta**  
(Lease)

Well No. **1**, in **1** **1/4** (Unit) The well is located **1000** feet from the **South** line and **1000** feet from the **West** line of Section **19**, T. **36N**, R. **8W**, NMPM.  
(GIVE LOCATION FROM SECTION LINE) **Blanco** Pool, **San Juan** County

If State Land the Oil and Gas Lease is No.

If patented land the owner is **Theodore Archuleta**

Address **Astos, New Mexico**

We propose to drill well with drilling equipment as follows: **Rotary Rig using mud to approx. 2800'. Rotary Rig using Gas 2800' to TB.**

The status of plugging bond is **(\$10,000 USF & G Blanket)**

Drilling Contractor **San Juan Drilling Co.**

We intend to complete this well in the **Monterey** formation at an approximate depth of **5000** feet.

CASING PROGRAM

We propose to use the following strings of Casing and to cement them as indicated:

Size of Hole	Size of Casing	Weight per Foot	New or Second Hand	Depth	Sacks Cement
<b>15 1/2</b>	<b>10 3/4</b>	<b>32.75</b>	<b>New</b>	<b>200</b>	<b>200</b>
<b>9 7/8</b>	<b>7 5/8</b>	<b>26.40</b>	<b>New</b>	<b>2800</b>	<b>150</b>
<b>6 3/4</b>	<b>5 1/2</b>	<b>15.50</b>	<b>New</b>	<b>2750 to 5000</b>	<b>300</b>
	<b>2" EUE</b>	<b>4.70</b>	<b>New</b>	<b>4950</b>	<b>Finishing</b>

If changes in the above plans become advisable we will notify you immediately.

ADDITIONAL INFORMATION (If recompletion give full details of proposed plan of work.)

Approved 8-2, 19 56  
Except as follows:

OIL CONSERVATION COMMISSION

Sincerely yours,

**Delhi-Taylor Oil Corporation**  
(Company or Operator)

By J. M. Howell

Position **Dist. Supt.**

Send Communications regarding well to

Name **Delhi-Taylor Oil Corporation**

Address **Box 1175 Farmington, New Mexico**



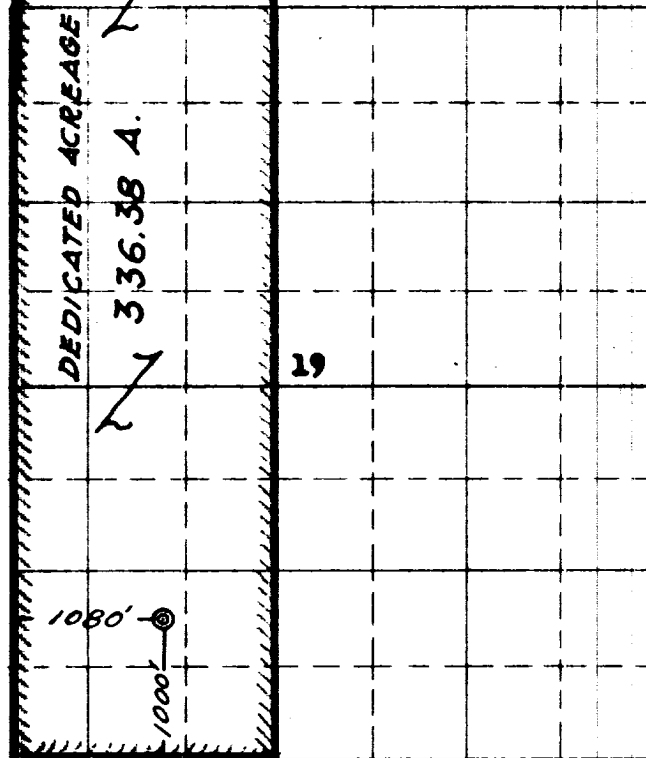
NEW MEXICO  
OIL CONSERVATION COMMISSION

Form C-128

WELL LOCATION AND/OR GAS PRORATION PLAT

DATE August 2, 1956  
OPERATOR DELHI - TAYLOR OIL CORP. LEASE Theodore Archuleta  
WELL NO. 1 SECTION 19 TOWNSHIP 30 NORTH RANGE 8 WEST NMPM  
LOCATED 1000 FEET FROM the SOUTH LINE 1080 FEET FROM the WEST LINE Will be furnished later  
SAN JUAN COUNTY, NEW MEXICO ELEVATION \_\_\_\_\_  
NAME OF PRODUCING FORMATION Mogaverto Blanco DEDICATED ACREAGE 336.38

Note: All distances must be from outer boundaries of section.



Scale 4 inches equal 1 mile



NOTE

This section of form is to be used for gas wells only

This is to certify that the above plat was prepared from field notes of actual surveys made by me or under my supervision and that the same are true and correct to the best of my knowledge and belief.

Date Surveyed 22 JUNE 1956

James P. Lense  
Registered Professional Engineer and/or Land Surveyor  
**JAMES P. LENSE**  
N. MEX. ENG. NO. 1463

1. Is this well a Dual Comp.  
Yes \_\_\_\_\_ No 2
2. If the answer to Question 1 is yes, are there any otherdually completed wells within the dedicated acreage.  
Yes \_\_\_\_\_ No \_\_\_\_\_

Name James P. Lense  
Position Dist. Supt.  
Representing Delhi-Taylor Oil Corp.  
Address P. O. Box 1175 Farmington, New Mexico

<b>OIL CONSERVATION COMMISSION</b>		
<b>AZTEC DISTRICT OFFICE</b>		
No. Copies Received <u>5</u>		
<b>DISTRIBUTION</b>		
	NO. FURNISHED	
Operator	1	
Santa Fe	1	
Proration Office		
State Land Office		
U. S. G. S.	2	
Transporter		
File	1	✓