

UNITED STATES  
DEPARTMENT OF THE INTERIOR  
GEOLOGICAL SURVEY

APPLICATION FOR PERMIT TO DRILL, DEEPEN, OR PLUG BACK

1a. TYPE OF WORK  
DRILL ☒ DEEPEN ☐ PLUG BACK ☐

b. WELL  
WELL ☐ GAS WELL ☒ OTHER ☐ SINGLE ZONE ☐ MULTIPLE ZONE ☐

2. NAME OF OPERATOR  
Tenneco Oil Company

3. ADDRESS OF OPERATOR  
P. O. Box 1714 - Durango, Colorado

4. LOCATION OF WELL (Report location clearly and in accordance with any State requirements.)\*  
At surface 1160' FSL, 1670' FWL Unit N  
At proposed prod. zone

14. DISTANCE IN MILES AND DIRECTION FROM NEAREST TOWN OR POST OFFICE\*

10. DISTANCE FROM PROPOSED\* LOCATION TO NEAREST PROPERTY OR LEASE LINE, FT. (Also to nearest drlg. unit line, if any)

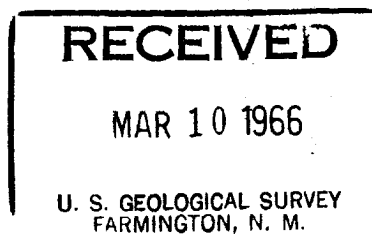
18. DISTANCE FROM PROPOSED LOCATION\* TO NEAREST WELL, DRILLING, COMPLETED, OR APPLIED FOR, ON THIS LEASE, FT.

21. ELEVATIONS (Show whether DF, RT, GR, etc.)  
5629' GR

23. PROPOSED CASING AND CEMENTING PROGRAM

SIZE OF HOLE	SIZE OF CASING	WEIGHT PER FOOT	SETTING DEPTH	QUANTITY OF CEMENT
12-1/4"	8-5/8"	20#	150	Circulate to surface - 100 sacks
7-7/8"	3-1/2"	7.7#	3000	Circulate cement to surface

We plan to rig up, drill with Rotary to approximate T.D. 3000'. Run casing as shown above, log, perforate and frac and install well head. Conduct deliverability tests.



IN ABOVE SPACE DESCRIBE PROPOSED PROGRAM: If proposal is to deepen or plug back, give data on present productive zone and proposed new productive zone. If proposal is to drill or deepen directionally, give pertinent data on subsurface locations and measured and true vertical depths. Give blowout preventer program, if any.

24. SIGNED Harold C. Nichols TITLE Senior Production Clerk DATE 3-9-66  
(This space for Federal or State office use)

PERMIT NO. \_\_\_\_\_ APPROVAL DATE \_\_\_\_\_

APPROVED [Signature] TITLE \_\_\_\_\_ DATE \_\_\_\_\_  
CONDITIONS OF APPROVAL, IF ANY:

Distribution:

- 5 - USGS
- 1 - Continental
- 1 - File

\*See Instructions On Reverse Side

**NEW MEXICO OIL CONSERVATION COMMISSION  
WELL LOCATION AND ACREAGE DEDICATION PLAT**

Form 1-1-1  
Supersedes 1-1-18  
Effective 1-1-1

All distances must be from the outer boundaries of the Section

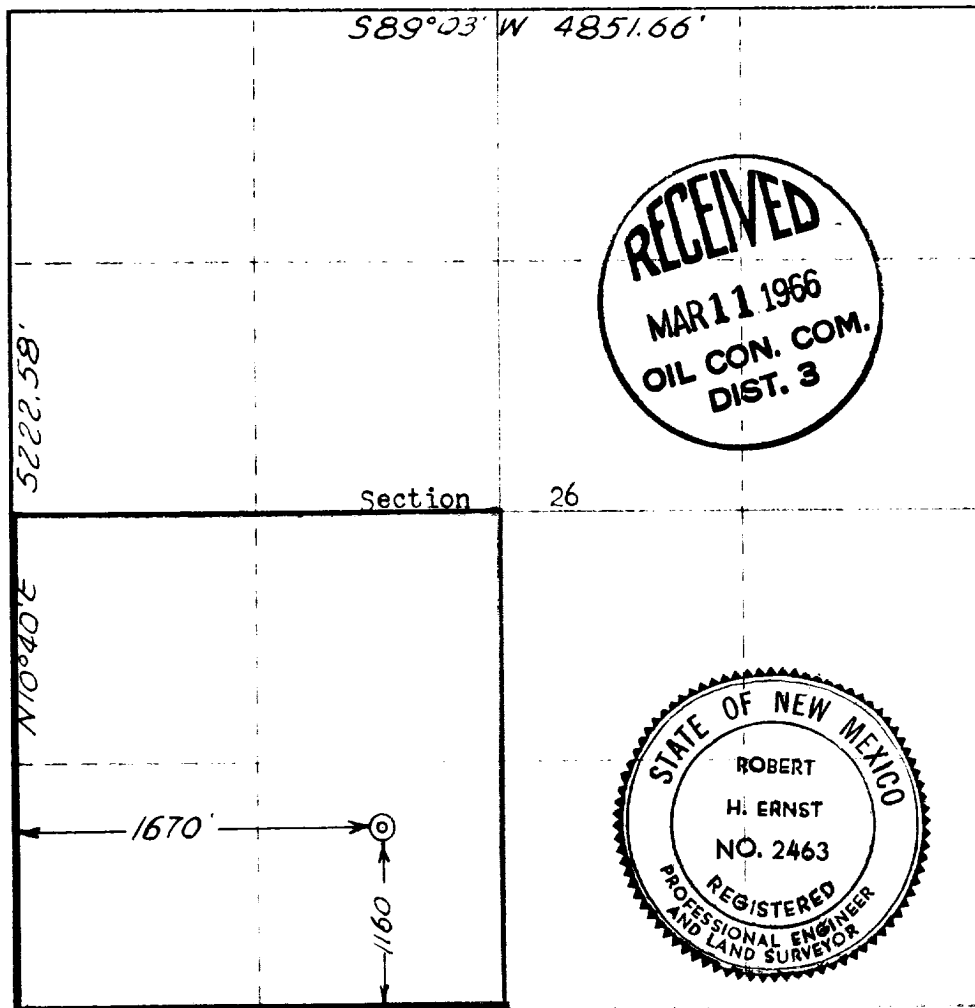
Operator <b>TENNECO OIL COMPANY</b>			Lease <b>FLORENCE</b>		Well No. <b>87</b>
Unit Letter <b>N</b>	Section <b>26</b>	Range <b>29N</b>	Range <b>9W</b>	County <b>San Juan</b>	
Actual Footage Location of Well:					
<b>1160</b>	feet from the <b>South</b>	<b>1670</b>	feet from the <b>West</b>		
Ground Level Elev. <b>5629 Ungraded</b>	Producing Formation <b>Blanco Pictured Cliffs</b>	Producing Formation <b>Blanco Pictured Cliffs</b>	Estimated Acreage <b>160</b> Acres		

1. Outline the acreage dedicated to the subject well by colored pencil or hatchure marks on the plat below.
2. If more than one lease is dedicated to the well, outline each and identify the ownership thereof (both as to working interest and royalty).
3. If more than one lease of different ownership is dedicated to the well, have the interests of all owners been consolidated by communitization, unitization, force-pooling, etc?

☐ Yes    ☐ No    If answer is "yes," type of consolidation \_\_\_\_\_

If answer is "no," list the owners and tract descriptions which have actually been consolidated. (Use reverse side of this form if necessary.) \_\_\_\_\_

No allowable will be assigned to the well until all interests have been consolidated (by communitization, unitization, forced-pooling, or otherwise) or until a non-standard unit, eliminating such interests, has been approved by the Commission.



**CERTIFICATION**

I hereby certify that the information contained herein is true and complete to the best of my knowledge and belief.

*Harold C. Nichols*

Name **Harold C. Nichols**  
Position **Senior Production Clerk**

Company **Tenneco Oil Company**

Date **March 9, 1966**

I hereby certify that the well location shown on this plat was plotted from field notes of actual surveys made by me or under my supervision, and that the same is true and correct to the best of my knowledge and belief.

Date **2 March 1966**

*Robert H. Ernst*  
Name **ROBERT H. ERNST**

Prof. No. **PE & LS 2463**