

UNITED STATES  
DEPARTMENT OF THE INTERIOR  
GEOLOGICAL SURVEY

## APPLICATION FOR PERMIT TO DRILL, DEEPEN, OR PLUG BACK

1. TYPE OF WORK  
DRILL ☒ DEEPEN ☐ PLUG BACK ☐2. NAME OF WELL  
GAS WELL ☒ OTHER ☐ SINGLE ZONE ☒ MULTIPLE ZONE ☐2. NAME OF OPERATOR  
Manneco Oil Company3. ADDRESS OF OPERATOR  
P. O. Box 1714, Durango, Colorado4. LOCATION (Report location clearly and in accordance with any State requirements.)  
At site 25' FSL 1770' FWL

At prod. zone Unit Letter "N"

14. DISTANCE IN MILES AND DIRECTION FROM NEAREST TOWN OR POST OFFICE\*

15. DISTANCE FROM PROPOSED\*  
LOCATION TO NEAREST  
PROPERTY OR LEASE LINE, FT.  
(Also to nearest drlg. unit line, if any)18. DISTANCE FROM PROPOSED LOCATION\*  
TO NEAREST WELL, DRILLING, COMPLETED,  
OR APPLIED FOR, ON THIS LEASE, FT.

21. ELEVATIONS (Show whether DF, RT, GR, etc.)

5715 GR

16. NO. OF ACRES IN LEASE

160

19. PROPOSED DEPTH

3000

17. NO. OF ACRES ASSIGNED  
TO THIS WELL

SW/4 160

20. ROTARY OR CABLE TOOLS

Rotary

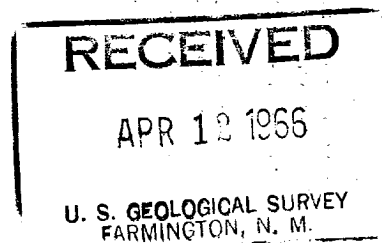
22. APPROX. DATE WORK WILL START\*

4-20-66

## 23. PROPOSED CASING AND CEMENTING PROGRAM

SIZE OF HOLE	SIZE OF CASING	WEIGHT PER FOOT	SETTING DEPTH	QUANTITY OF CEMENT
2-7/8	8-5/8	20#	150	Circulate to surface - 100 SA
3-7/8	3-1/2	7.7# 10R	3000	Circulate cement to surface

We plan to rig up, drill w/rotary to aprx. T. D. 3000'. Run casing as shown above. Log, perforate and frac and install well head. Conduct deliverability tests.



IN ABOVE SPACE DESCRIBE PROPOSED PROGRAM: If proposal is to deepen or plug back, give data on present productive zone and proposed new productive zone. If proposal is to drill or deepen directionally, give pertinent data on subsurface locations and measured and true vertical depths. Give blowout preventer program, if any.

24. SIGNED Harold C. Nichols TITLE Senior Production Clerk DATE April 6, 1966  
Harold C. Nichols

(This space for Federal or State office use)

PERMIT NO. \_\_\_\_\_ APPROVAL DATE \_\_\_\_\_

APPROVED BY \_\_\_\_\_ TITLE \_\_\_\_\_ DATE \_\_\_\_\_  
CONDITIONS OF APPROVAL, IF ANY:

NEW MEXICO OIL CONSERVATION COMMISSION  
WELL LOCATION AND ACREAGE DEDICATION PLAT

Form 1-1-64  
Supersedes C-128  
Effective 1-1-64

All measurements must be from the outer boundaries of the Section.

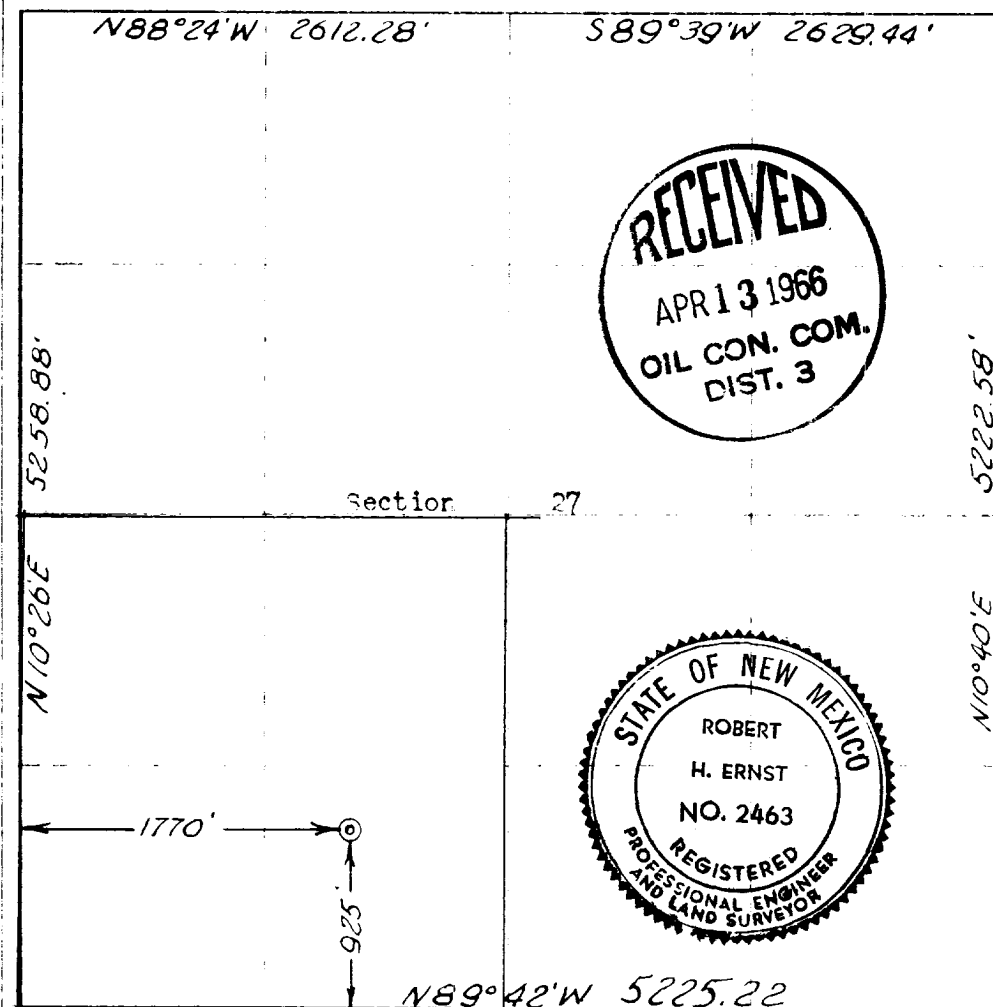
Tenneco Oil Company		Florence		74	
N	27	29N	9W	San Juan	
925	South	1770	West	SW/4	
5715 Ungraded	Blanco-Pictured Cliffs	Blanco-Pictured Cliffs	160		

1. Outline the acreage dedicated to the subject well by colored pencil or hatchure marks on the plat below.
2. If more than one lease is dedicated to the well, outline each and identify the ownership thereof (both as to working interest and royalty).
3. If more than one lease of different ownership is dedicated to the well, have the interests of all owners been consolidated by communitization, unitization, force-pooling, etc?

☐ Yes ☐ No If answer is "yes," type of consolidation \_\_\_\_\_

If answer is "no," list the owners and tract descriptions which have actually been consolidated. (Use reverse side of this form if necessary.) \_\_\_\_\_

No allowable will be assigned to the well until all interests have been consolidated (by communitization, unitization, forced-pooling, or otherwise) or until a non-standard unit, eliminating such interests, has been approved by the Commission.



CERTIFICATION

I hereby certify that the information contained herein is true and complete to the best of my knowledge and belief.

*Harold C. Nichols*  
Harold C. Nichols  
Senior Production Clerk

Tenneco Oil Company

April 6, 1966

I hereby certify that the well location shown on this plat was plotted from field notes of actual surveys made by me or under my supervision, and that the same is true and correct to the best of my knowledge and belief.

1 March 1966

*Robert H. Ernst*  
ROBERT H. ERNST

N. Mex. PE & LS 2463