

NEW MEXICO OIL CONSERVATION COMMISSION
WELL LOCATION AND ACERAGE DEDICATION PLAT

CORRECTED UNIT LETTER DESIGNATION -
 SHOULD BE UNIT "G"
 INSTEAD OF "H" (SW/4
 NE/4 INSTEAD OF SE/4
 NE/4)

All distances must be from the outer boundaries of the Section

Operator PAN AMERICAN PETROLEUM CORPORATION			Lease GALLEGOS CANYON UNIT-DAKOTA		Well No. 221
Unit Letter G	Section 31	Township 29 NORTH	Range 12 WEST	County SAN JUAN	
Actual Footage Location of Well: 2445 feet from the NORTH line and 1690 feet from the EAST line					
Ground Level Elev. REPORT LATER	Producing Formation DAKOTA		Pool BASIN DAKOTA	Dedicated Acreage: 320 Acres	

- Outline the acreage dedicated to the subject well by colored pencil or hatchure marks on the plat below.
- If more than one lease is dedicated to the well, outline each and identify the ownership thereof (both as to working interest and royalty),
- If more than one lease of different ownership is dedicated to the well, have the interests of all owners been consolidated by communitization, unitization, force-pooling, etc?

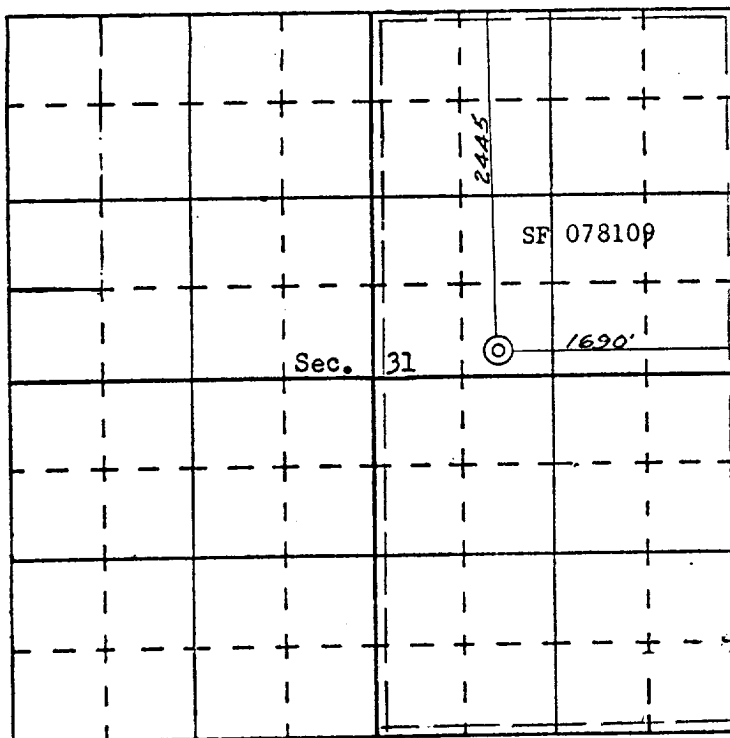
(X) Yes () No If answer is "yes," type of consolidation Unitization

If answer is "no," list the owners and tract descriptions which have actually consolidated. (Use reverse side of this form if necessary.)

No allowable will be assigned to the well until all interests have been consolidated (by communitization, unitization, forced-pooling, or otherwise) or until a non standard unit, eliminating such interests, has been approved by the Commission.

CERTIFICATION

Ref: GLO plat dated April 19, 1881.



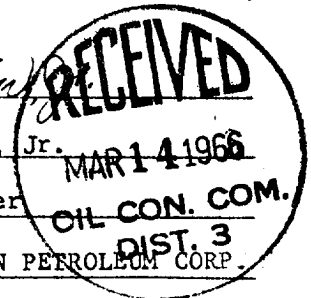
SCALE—4 INCHES EQUALS 1 MILE

SAN JUAN ENGINEERING COMPANY, FARMINGTON, N. M.

CORRECTED UNIT LETTER DESIGNATION

I hereby certify that the information contained herein is true and complete to the best of my knowledge and belief.

Name G. W. Eaton, Jr.
 Position Area Engineer
 Company PAN AMERICAN PETROLEUM CORP.
 Date March 10, 1966



I hereby certify that the well location shown on this plat was plotted from field notes of actual surveys made by me or under my supervision, and that the same is true and correct to the best of my knowledge and belief.

Date Surveyed February 4, 1966
 Registered Professional Engineer
 and/or Land Surveyor
James P. Leese
 Certificate No. 1263

