

UNITED STATES
DEPARTMENT OF THE INTERIOR
GEOLOGICAL SURVEY

APPLICATION FOR PERMIT TO DRILL, DEEPEN, OR PLUG BACK

1a. TYPE OF WORK

DRILL ☒DEEPEN ☐PLUG BACK ☐

b. TYPE OF WELL

OIL
WELL ☐GAS
WELL ☒

OTHER

SINGLE
ZONE ☒MULTIPLE
ZONE ☐

2. NAME OF OPERATOR

Tenneco Oil Company

3. ADDRESS OF OPERATOR

P. O. Box 1714, Durango, Colorado 81301

4. LOCATION OF WELL (Report location clearly and in accordance with any State requirements.)*

At surface

850' FSL 790' FEL

At proposed prod. zone

14. DISTANCE IN MILES AND DIRECTION FROM NEAREST TOWN OR POST OFFICE*

15. DISTANCE FROM PROPOSED*

LOCATION TO NEAREST
PROPERTY OR LEASE LINE, FT.
(Also to nearest drlg. unit line, if any)

16. NO. OF ACRES IN LEASE

160

18. DISTANCE FROM PROPOSED LOCATION*
TO NEAREST WELL, DRILLING, COMPLETED,
OR APPLIED FOR, ON THIS LEASE, FT.

19. PROPOSED DEPTH

3000

17. NO. OF ACRES ASSIGNED
TO THIS WELL

160 SE/4

20. ROTARY OR CABLE TOOLS

Rotary

21. ELEVATIONS (Show whether DF, RT, GR, etc.)

5740 GR

22. APPROX. DATE WORK WILL START*

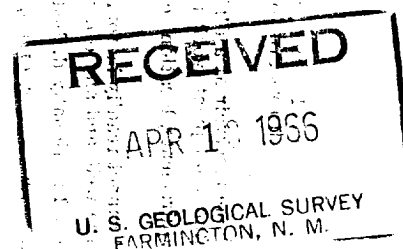
April 30, 1966

23.

PROPOSED CASING AND CEMENTING PROGRAM

| SIZE OF HOLE | SIZE OF CASING | WEIGHT PER FOOT | SETTING DEPTH | QUANTITY OF CEMENT |
|--------------|----------------|-----------------|---------------|-----------------------------|
| 12-1/4 | 8-5/8 | 20# | 150 | Circulate to surface |
| 7-7/8 | 3-1/2 | 7.7# 10R | 3000 | Circulate cement to surface |

We plan to rig up, drill w/rotary to approximate T.D. 3000'. Run casing as shown above. Log, perforate and frac and install well head and conduct deliverability tests.



IN ABOVE SPACE DESCRIBE PROPOSED PROGRAM: If proposal is to deepen or plug back, give data on present productive zone and proposed new productive zone. If proposal is to drill or deepen directionally, give pertinent data on subsurface locations and measured and true vertical depths. Give blowout preventer program, if any.

24.

SIGNED

Harold C. Nichols

TITLE Senior Production Clerk

DATE April 12, 1966

(This space for Federal or State office use)

PERMIT NO.

APPROVAL DATE

APPROVED BY

TITLE

DATE

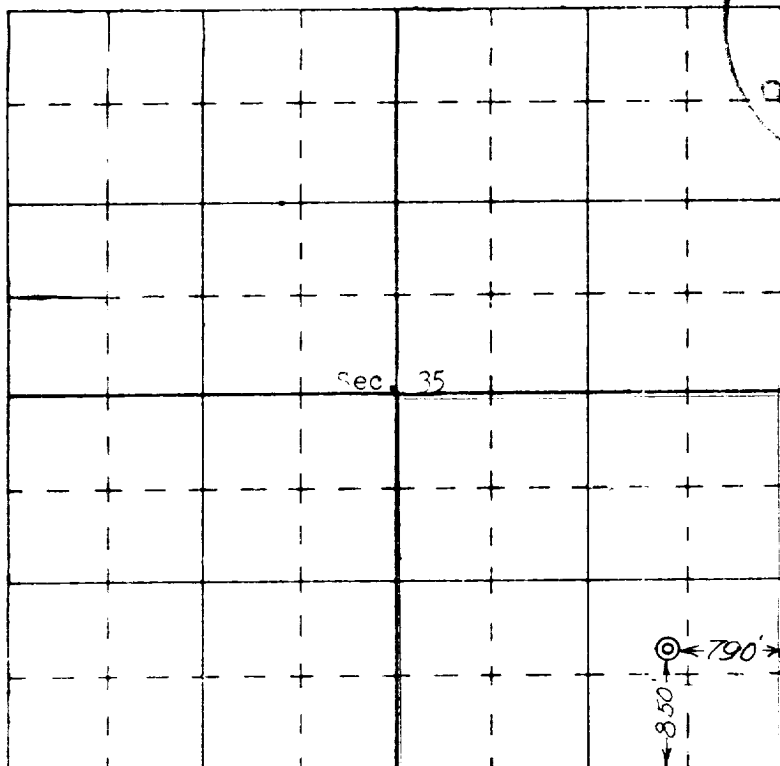
CONDITIONS OF APPROVAL, IF ANY:

NEW MEXICO OIL CONSERVATION COMMISSION WELL LOCATION AND ACERAGE DEDICATION PLAT

All distances must be from the outer boundaries of the Section

Operator TENNECO OIL COMPANY Lease FLORENCE Well No. 76
Unit Letter P Section 35 Township 29N Range 9W County San Juan
Actual Footage Location of Well:
850 feet from the south line and 790 feet from the east line
Ground Level 5740 ungraded Producing Formation Aztec Pictured Cliffs Dedicated Acreage 160 SE/4
Aztec Pictured Cliffs

- Outline the acreage dedicated to the subject well by colored pencil or hatchure marks on the plat below.
- If more than one lease is dedicated to the well, outline each and identify the ownership thereof (both as to working interest and royalty).
- If more than one lease of different ownership is dedicated to the well, have the interests of all owners been consolidated (by communitization, unitization, force-pooling, etc)?
☐ Yes ☐ No If answer is "yes," type of consolidation: _____
 If answer is "no" list the owners and tract descriptions which have actually consolidated: (Use reverse side of this form if necessary) _____
 No allowable will be assigned to the well until all interests have been consolidated (by communitization, unitization, force-pooling, or otherwise) or until a non-standard unit, eliminating such interests, has been approved by the Commission.

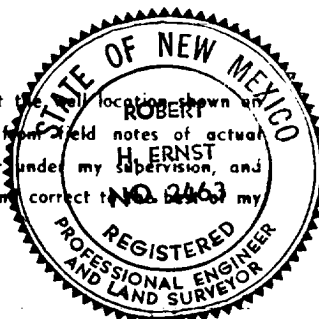


CERTIFICATION

I hereby certify that the information contained herein is true and complete to the best of my knowledge and belief.

Harold C. Nichols
Name Harold C. Nichols
Position Senior Production Clerk
Company Tenneco Oil Company
Date April 12, 1966

I hereby certify that the location shown on this plat was plotted from field notes of actual surveys made by me or under my supervision, and that the same is true and correct to the best of my knowledge and belief.



6 April 1966
Date Surveyed
Robert W. Ernst
Registered Professional Engineer and/or Land Surveyor
Robert W. Ernst
N. Mex. E.T. & L.S. 2463
Certificate No. _____