

**UNITED STATES
DEPARTMENT OF THE INTERIOR
GEOLOGICAL SURVEY**

APPLICATION FOR PERMIT TO DRILL, DEEPEN, OR PLUG BACK

1a. TYPE OF WORK
 DRILL DEEPEN PLUG BACK

b. TYPE OF WELL
 OIL WELL GAS WELL OTHER
 SINGLE ZONE MULTIPLE ZONE

2. NAME OF OPERATOR
Tenneco Oil Company

3. ADDRESS OF OPERATOR
P. O. Box 1714 - Durango, Colorado

4. LOCATION OF WELL (Report location clearly and in accordance with any State requirements.)*
 At surface 1655' FSL, 680' FWL Unit L
1550' FSL, 790' FWL
 At proposed prod. zone

14. DISTANCE IN MILES AND DIRECTION FROM NEAREST TOWN OR POST OFFICE*

15. DISTANCE FROM PROPOSED* LOCATION TO NEAREST PROPERTY OR LEASE LINE, FT. (Also to nearest drlg. unit line, if any)

16. NO. OF ACRES IN LEASE
141.67

17. NO. OF ACRES ASSIGNED TO THIS WELL
141.67 SW/4

18. DISTANCE FROM PROPOSED LOCATION* TO NEAREST WELL, DRILLING, COMPLETED, OR APPLIED FOR, ON THIS LEASE, FT.

19. PROPOSED DEPTH
3000'

20. ROTARY OR CABLE TOOLS
Rotary

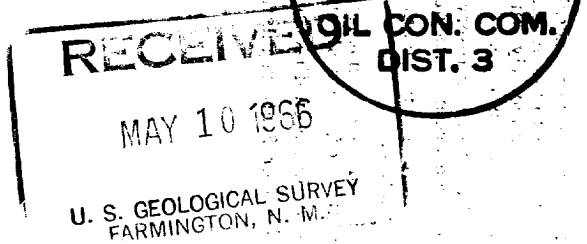
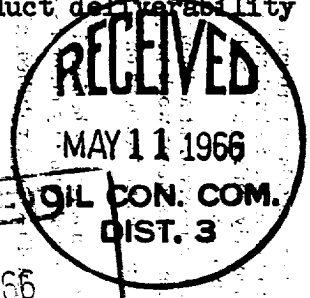
21. ELEVATIONS (Show whether DF, RT, GR, etc.)

22. APPROX. DATE WORK WILL START*
May 17, 1966

23. PROPOSED CASING AND CEMENTING PROGRAM

SIZE OF HOLE	SIZE OF CASING	WEIGHT PER FOOT	SETTING DEPTH	QUANTITY OF CEMENT
12-1/4"	8-5/8"	20#	150	Circulate to surface
7-7/8"	3-1/2"	7.7#	3000	Circulate cement to surface

We plan to rig up, drill with Rotary to approximate TD 3000'. Run casing as shown above. Log. Perforate and frac and install well head and conduct deliverability tests.



IN ABOVE SPACE DESCRIBE PROPOSED PROGRAM: If proposal is to deepen or plug back, give data on present productive zone and proposed new productive zone. If proposal is to drill or deepen directionally, give pertinent data on subsurface locations and measured and true vertical depths. Give blowout preventer program, if any.

24. SIGNED Harold C. Nichols TITLE Senior Production Clerk DATE May 9, 1966

(This space for Federal or State office use)

PERMIT NO. _____ APPROVAL DATE _____

APPROVED BY Harold C. Nichols for NSU TITLE _____ DATE _____

CONDITIONS OF APPROVAL, IF ANY:
 Distribution:
 5 - USGS
 1 - Continental
 1 - File

*See Instructions On Reverse Side

CORRECTED PLAT
DESTROY ALL OTHERS

NEW MEXICO OIL CONSERVATION COMMISSION
WELL LOCATION AND ACERAGE DEDICATION PLAT

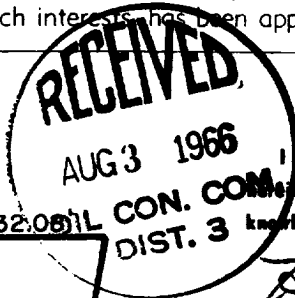
All distances must be from the outer boundaries of the Section

Operator TENNECO OIL CO.		Lease HAMNER			Well No. 8
Unit Letter L	Section 29	Township 29 North	Range 9 West	County San Juan	
Actual Footage Location of Well: 1655 feet from the South line and 680 feet from the West line					
Ground Level Elev. 5745' Graded	Producing Formation Blanco Pictured Cliffs	Pool Blanco Pictured Cliffs	Dedicated Acreage: 141.67 Acres		

- Outline the acreage dedicated to the subject well by colored pencil or hachure marks on the plat below.
- If more than one lease is dedicated to the well, outline each and identify the ownership thereof (both as to working interest and royalty).
- If more than one lease of different ownership is dedicated to the well, have the interests of all owners been consolidated by communitization, unitization, force-pooling, etc?
() Yes () No If answer is "yes," type of consolidation

If answer is "no," list the owners and tract descriptions which have actually consolidated. (Use reverse side of this form if necessary.)

No allowable will be assigned to the well until all interests have been consolidated (by communitization, unitization, forced-pooling, or otherwise) or until a non standard unit, eliminating such interests has been approved by the Commission.



CERTIFICATION

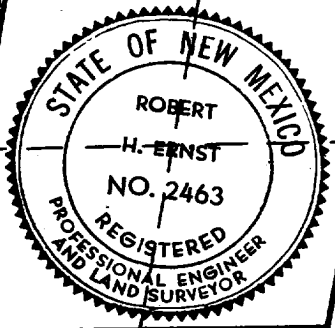
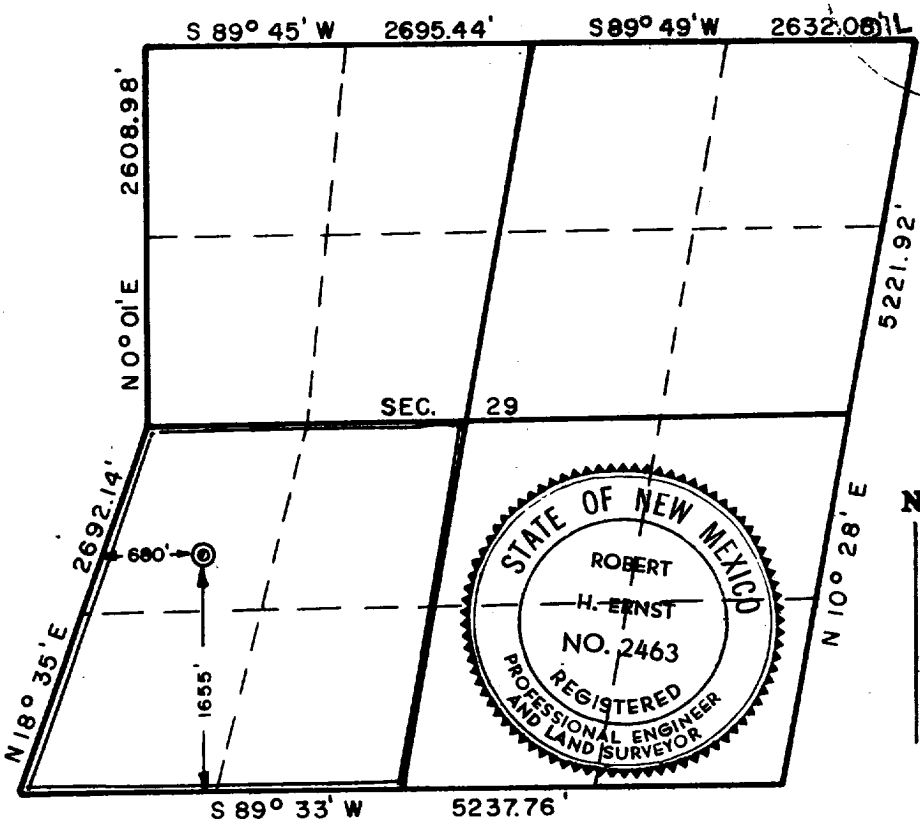
I hereby certify that the information contained herein is true and complete to the best of my knowledge and belief.

Harold C. Nichols
Name Harold C. Nichols
Position Senior Production Clerk
Company Tenneco Oil Company
Date July 14, 1966

I hereby certify that the well location shown on this plat was plotted from field notes of actual surveys made by me or under my supervision, and that the same is true and correct to the best of my knowledge and belief.

7 July 1966
Date Surveyed
Robert H. Ernst
Registered Professional Engineer
and/or Land Surveyor

Robert H. Ernst
N. Mex. PE & LS 2463
Certificate No.



ERNST ENGINEERING CO.
DURANGO, COLO.



**NEW MEXICO OIL CONSERVATION COMMISSION
WELL LOCATION AND ACERAGE DEDICATION PLAT**

All distances must be from the outer boundaries of the Section

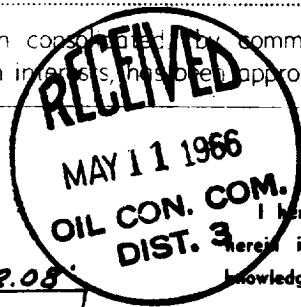
Operator TENNECO OIL COMPANY		Lease HAMNER		Well No. 8	
Unit Letter L	Section 29	Township 29 North	Range 9 West	County San Juan	
Actual Footage Location of Well: 1550 feet from the South line and 790 feet from the West line					
Ground Level Elev. 5750' ungraded	Producing Formation Blanco Pictured Cliffs	Pool Blanco Pictured Cliffs	Dedicated Acreage: 141.67		Acre

1. Outline the acreage dedicated to the subject well by colored pencil or hachure marks on the plat below.
2. If more than one lease is dedicated to the well, outline each and identify the ownership thereof (both as to working interest and royalty),
3. If more than one lease of different ownership is dedicated to the well, have the interests of all owners been consolidated by communitization, unitization, force-pooling, etc?

Yes No If answer is "yes," type of consolidation

If answer is "no," list the owners and tract descriptions which have actually consolidated. (Use reverse side of this form if necessary.)

No allowable will be assigned to the well until all interests have been consolidated by communitization, unitization, forced-pooling, or otherwise) or until a non standard unit, eliminating such interests, has been approved by the Commission.



CERTIFICATION

I hereby certify that the information contained herein is true and complete to the best of my knowledge and belief.

Harold C. Nichols
 Name **Harold C. Nichols**
 Position **Senior Production Clerk**
 Company **Tenneco Oil Company**
 Date **May 9, 1966**

I hereby certify that the well location shown on this plat was plotted from field notes of actual surveys made by me or under my supervision, and that the same is true and correct to the best of my knowledge and belief.

18 April 1966
 Date Surveyed
Robert H. Ernst
 Registered Professional Engineer
 and/or Land Surveyor
Robert H. Ernst
N. Mex. PE & LS 2463

