

OIL CONSERVATION COMMISSION  
DISTRICT

OIL CONSERVATION COMMISSION  
BOX 871  
SANTA FE, NEW MEXICO

DATE 7-26-66

Re: Proposed NSP \_\_\_\_\_

Proposed NWU \_\_\_\_\_ ✓

Proposed NSL \_\_\_\_\_

Proposed NFO \_\_\_\_\_

Proposed DC \_\_\_\_\_

Gentlemen:

I have examined the application dated \_\_\_\_\_  
for the Permco Oil Co. Hammer # 8 L-29-29N-9W  
Operator Lease and Well No. S-T-R

and my recommendations are as follows:

approved  
\_\_\_\_\_  
\_\_\_\_\_  
\_\_\_\_\_  
\_\_\_\_\_  
\_\_\_\_\_

Yours very truly,

Ernest Alameda



TENNECO OIL COMPANY • P. O. BOX 1714 • 835 SECOND AVENUE • DURANGO, COLORADO 81302

July 14, 1966



Secretary Director  
New Mexico Oil Conservation Commission  
P. O. Box 2088  
Santa Fe, New Mexico

Re: Unorthodox Location  
Hamner No. 8  
1655' FSL, 680' FWL  
Section 29, T-29-N, R-9-W  
San Juan County, New Mexico  
~~Blanco~~ Pictured Cliffs Field

Dear Sir:

Application for Administrative Approval is hereby made under Section I, Rule 104-F for unorthodox location in the Blanco Pictured Cliffs formation. Topographical conditions prevent staking a standard location.

Aztec Oil and Gas Company, Pan American Petroleum Corporation and Southern Union Gas Company, the offset operators will be furnished a copy of this application and will be requested by a separate letter to furnish a waiver on the unorthodox location.

Very truly yours,

TENNECO OIL COMPANY

Robert E. Siverson  
District Production Superintendent

HCN:hes

Attachment

CC: Aztec Oil & Gas Company  
Pan American Petroleum Corp.  
Southern Union Gas Co.  
Continental Oil Co.  
File

NMOCC AZTee ✓



**NEW MEXICO OIL CONSERVATION COMMISSION  
WELL LOCATION AND ACERAGE DEDICATION PLAT**

All distances must be from the outer boundaries of the Section

Operator <b>TENNECO OIL CO.</b>			Lease <b>HAMNER</b>			Well No <b>8</b>		
Unit Letter <b>L</b>	Section <b>29</b>	Township <b>29 North</b>	Range <b>9 West</b>	County <b>San Juan</b>				
Actual Footage Location of Well: <b>1655</b> feet from the <b>South</b> line and <b>680</b> feet from the <b>West</b> line								
Ground Level Elev <b>5745' Graded</b>	Producing Formation <b>Blanco Pictured Cliffs</b>		Pool <b>Blanco Pictured Cliffs</b>	Dedicated Acreage: <b>141.67</b>			Acres	

1. Outline the acreage dedicated to the subject well by colored pencil or hachure marks on the plat below.
2. If more than one lease is dedicated to the well, outline each and identify the ownership thereof (both as to working interest and royalty).
3. If more than one lease of different ownership is dedicated to the well, have the interests of all owners been consolidated by communitization, unitization, force-pooling, etc?

( ) Yes ( ) No If answer is "yes," type of consolidation .....

If answer is "no," list the owners and tract descriptions which have actually consolidated. (Use reverse side of this form if necessary.) .....

No allowable will be assigned to the well until all interests have been consolidated (by communitization, unitization, forced-pooling, or otherwise) or until a non standard unit, eliminating such interests, has been approved by the Commission.

**CERTIFICATION**

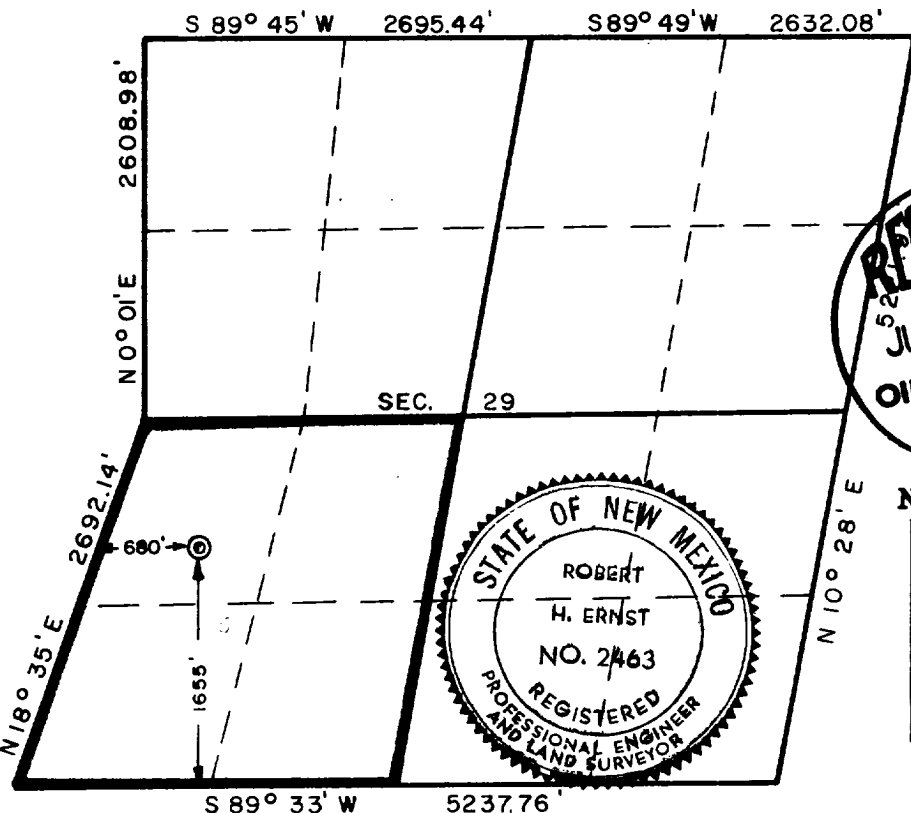
I hereby certify that the information contained herein is true and complete to the best of my knowledge and belief.

*Harold C. Nichols*  
Name Harold C. Nichols  
Position Senior Production Clerk  
Company Tenneco Oil Company  
Date July 14, 1966



I hereby certify that the well location shown on this plat was plotted from field notes of actual surveys made by me or under my supervision, and that the same is true and correct to the best of my knowledge and belief.

**7 July 1966**  
Date Surveyed  
*Robert H. Ernst*  
Registered Professional Engineer  
and/or Land Surveyor  
**Robert H. Ernst**  
**N. Mex. PE & LS 2463**  
Certificate No.



**ERNST ENGINEERING CO.  
DURANGO, COLO.**

CORRECTED PLAT

DESTROY ALL OTHERS

**NEW MEXICO OIL CONSERVATION COMMISSION  
WELL LOCATION AND ACERAGE DEDICATION PLAT**

All distances must be from the outer boundaries of the Section

Operator <b>TENNECO OIL CO.</b>				Lease <b>HAMNER</b>		Well No <b>8</b>	
Unit Letter <b>L</b>	Section <b>29</b>	Township <b>29 North</b>	Range <b>9 West</b>	County <b>San Juan</b>			
Actual Footage Location of Well: <b>1655</b> feet from the <b>South</b> line and <b>680</b> feet from the <b>West</b> line							
Ground Level Elev <b>5745' Graded</b>		Producing Formation <b>Blanco Pictured Cliffs</b>		Pool <b>Artes</b>		Dedicated Acreage: <b>141.67</b> Acres	

- Outline the acreage dedicated to the subject well by colored pencil or hatchure marks on the plat below.
- If more than one lease is dedicated to the well, outline each and identify the ownership thereof (both as to working interest and royalty),
- If more than one lease of different ownership is dedicated to the well, have the interests of all owners been consolidated by communitization, unitization, force-pooling, etc?

( ) Yes ( ) No If answer is "yes," type of consolidation .....

If answer is "no," list the owners and tract descriptions which have actually consolidated. (Use reverse side of this form if necessary.) .....

No allowable will be assigned to the well until all interests have been consolidated (by communitization, unitization, forced-pooling, or otherwise) or until a non standard unit, eliminating such interests, has been approved by the Commission.

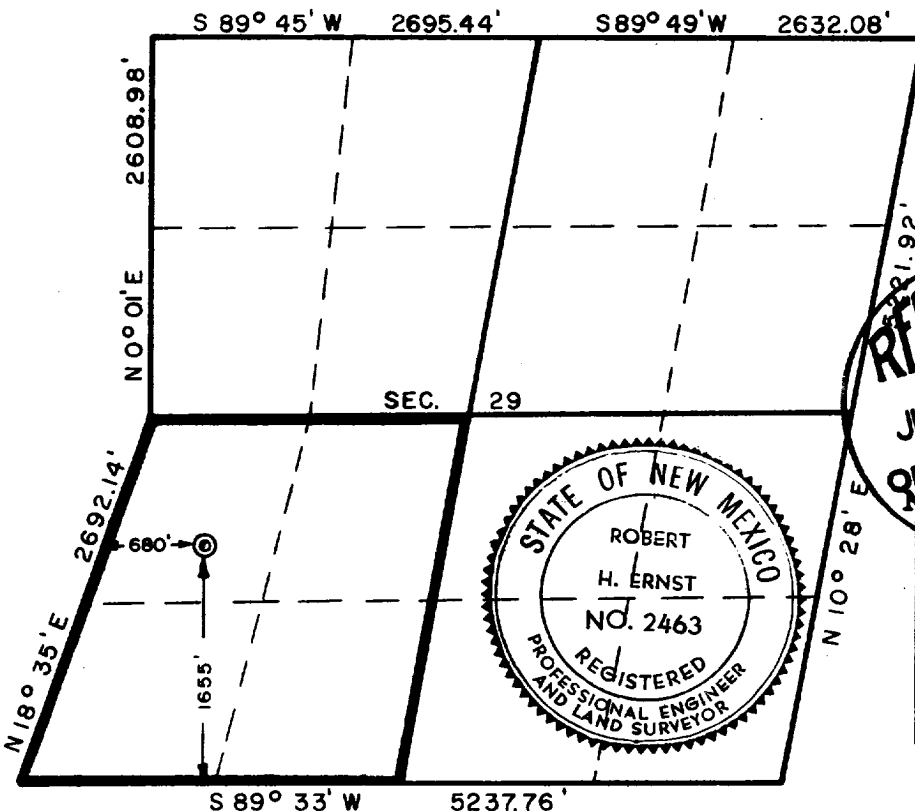
**CERTIFICATION**

I hereby certify that the information contained herein is true and complete to the best of my knowledge and belief.

*Harold C. Nichols*  
Name Harold C. Nichols  
Position Senior Production Clerk  
Company Tenneco Oil Company  
Date July 14, 1966

I hereby certify that the well location shown on this plat was plotted from field notes of actual surveys made by me or under my supervision, and that the same is true and correct to the best of my knowledge and belief.

**7 July 1966**  
Date Surveyed  
*Robert H. Ernst*  
Registered Professional Engineer  
and/or Land Surveyor  
**Robert H. Ernst**  
**N. Mex. PE & LS 2463**  
Certificate No.



**ERNST ENGINEERING CO.  
DURANGO, COLO.**