

UNITED STATES  
DEPARTMENT OF THE INTERIOR  
GEOLOGICAL SURVEY

## APPLICATION FOR PERMIT TO DRILL, DEEPEN, OR PLUG BACK

## 1a. TYPE OF WORK

DRILL ☒DEEPEN ☐PLUG BACK ☐

## b. TYPE OF WELL

OIL  
WELL ☐GAS  
WELL ☒

OTHER

SINGLE  
ZONE ☒MULTIPLE  
ZONE ☐

## 2. NAME OF OPERATOR

Tenneco Oil Company

## 3. ADDRESS OF OPERATOR

P. O. Box 1714, Durango, Colorado 81301

4. LOCATION OF WELL (Report location clearly and in accordance with any State requirements.)\*  
At surface

1850' FNL 1030' FEL

At proposed prod. zone

Unit Letter "H"

## 14. DISTANCE IN MILES AND DIRECTION FROM NEAREST TOWN OR POST OFFICE\*

## 15. DISTANCE FROM PROPOSED\*

LOCATION TO NEAREST  
PROPERTY OR LEASE LINE, FT.  
(Also to nearest drlg. unit line, if any)

## 16. NO. OF ACRES IN LEASE

160

17. NO. OF ACRES ASSIGNED  
TO THIS WELL

160 NE/4

18. DISTANCE FROM PROPOSED LOCATION\*  
TO NEAREST WELL, DRILLING, COMPLETED,  
OR APPLIED FOR, ON THIS LEASE, FT.

## 19. PROPOSED DEPTH

3000

## 20. ROTARY OR CABLE TOOLS

Rotary

## 21. ELEVATIONS (Show whether DF, RT, GR, etc.)

5670 GR

## 22. APPROX. DATE WORK WILL START\*

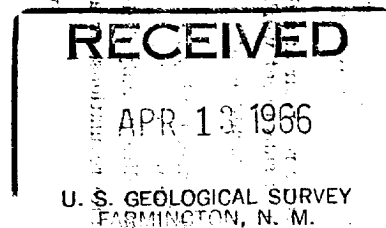
April 25, 1966

## 23.

## PROPOSED CASING AND CEMENTING PROGRAM

SIZE OF HOLE	SIZE OF CASING	WEIGHT PER FOOT	SETTING DEPTH	QUANTITY OF CEMENT
12-1/4	8-5/8	20#	150	Circulate to surface
7-7/8	3-1/2	7.7# 10R	3000	Circulate cement to surface

We plan to rig up, drill w/rotary to approximate T.D. 3000'. Run casing as shown above. Log, perforate and frac and install well head and conduct deliverability tests.



IN ABOVE SPACE DESCRIBE PROPOSED PROGRAM: If proposal is to deepen or plug back, give data on present productive zone and proposed new productive zone. If proposal is to drill or deepen directionally, give pertinent data on subsurface locations and measured and true vertical depths. Give blowout preventer program, if any.

## 24.

SIGNED

*Harold C. Nichols*  
Harold C. Nichols

TITLE Senior Production Clerk

DATE April 12, 1966

(This space for Federal or State office use)

PERMIT NO. \_\_\_\_\_

APPROVAL DATE \_\_\_\_\_

APPROVED BY \_\_\_\_\_

TITLE \_\_\_\_\_

DATE \_\_\_\_\_

CONDITIONS OF APPROVAL, IF ANY:

5 USGS, Frmg. 1 Cont<sup>0</sup>, 1 TOC File

\*See Instructions On Reverse Side

**NEW MEXICO OIL CONSERVATION COMMISSION  
WELL LOCATION AND ACERAGE DEDICATION PLAT**

All distances must be from the outer boundaries of the Section

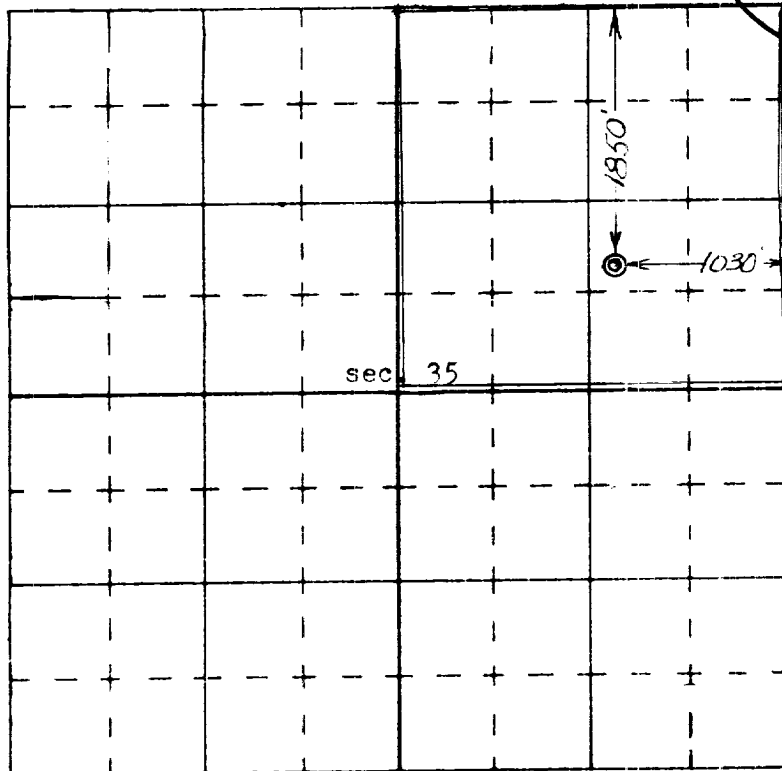
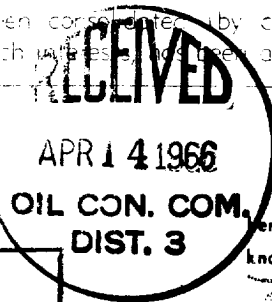
Operator <b>TENNECO OIL COMPANY</b>			Lease <b>FLORENCE</b>		Well No. <b>75</b>
Unit Letter <b>H</b>	Section <b>35</b>	Township <b>29N</b>	Range <b>9W</b>	County <b>San Juan</b>	
Actual Footage Location of Well:					
1850 feet from the <b>north</b> line and		1030 feet from the <b>east</b> line			
Ground Level Elev. <b>5670 ungraded</b>	Producing Formation <b>Aztec Pictured Cliffs</b>	Pay <b>Aztec Pictured Cliffs</b>	Dedicated Acreage <b>160</b>		<b>NE/4</b> Acres

1. Outline the acreage dedicated to the subject well by colored pencil or machine marks on the plat below.
2. If more than one lease is dedicated to the well, outline each and identify the ownership thereof (both as to working interest and royalty).
3. If more than one lease of different ownership is dedicated to the well, have the interests of all owners been consolidated by communization, unitization, force-pooling, etc?

☐ Yes ☐ No If answer is "yes," type of consolidation: \_\_\_\_\_

If answer is "no," list the owners and tract descriptions which have actually consolidated (Use reverse side of this form if necessary): \_\_\_\_\_

No allowable will be assigned to the well until all interests have been consolidated (by communization, unitization, forced-pooling, or otherwise) or until a non standard unit, eliminating such interests, has been approved by the Commission

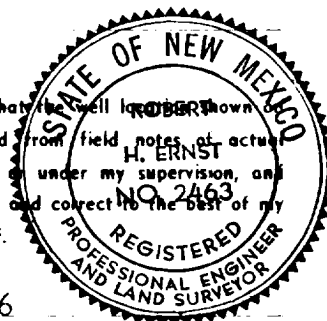


**CERTIFICATION**

I hereby certify that the information contained herein is true and complete to the best of my knowledge and belief.

Name Harold C. Nichols  
 Position Senior Production Clerk  
 Company Tenneco Oil Company  
 Date April 12, 1966

I hereby certify that the well location shown on this plat was plotted from field notes of actual surveys made by me or under my supervision, and that the same is true and correct to the best of my knowledge and belief.



Date Surveyed 6 April 1966  
 Registered Professional Engineer and/or Land Surveyor  
Robert W. Ernst

ERNST ENGINEERING CO.  
DURANGO, COLORADO

Robert W. Ernst  
 P. Eng. P.E. & L.S. 2463  
 Certificate No. \_\_\_\_\_