

UNITED STATES
DEPARTMENT OF THE INTERIOR
BUREAU OF LAND MANAGEMENT

FORM APPROVED
Budget Bureau No. 1004-0135
Expires: March 31, 1993

SUNDRY NOTICES AND REPORTS ON WELLS

Do not use this form for proposals to drill or to deepen or reentry to a different reservoir.
Use "APPLICATION FOR PERMIT—" for such proposals

SUBMIT IN TRIPLICATE

1. Type of Well

☐ Oil Well ☒ Gas Well ☐ Other

2. Name of Operator

D. J. Simmons Company

3. Address and Telephone No.

P.O. Box 1469, Farmington, NM 87499 (505) 326-3753

4. Location of Well (Footage, Sec., T., R., M., or Survey Description)

1560 FSL x 1140 FWL Section 24, T29N, R9W

5. Lease Designation and Serial No.

SF 080000-A

6. If Indian, Allottee or Tribe Name

7. If Unit or CA, Agreement Designation

8. Well Name and No.

Simmons P.C. #6

9. API Well No.

300451186400S1

10. Field and Pool, or Exploratory Area

Blanco P.C.

11. County or Parish, State

San Juan

12. CHECK APPROPRIATE BOX(s) TO INDICATE NATURE OF NOTICE, REPORT, OR OTHER DATA

TYPE OF SUBMISSION

- ☒ Notice of Intent
☐ Subsequent Report
☐ Final Abandonment Notice

TYPE OF ACTION

- ☐ Abandonment
☐ Recompletion
☐ Plugging Back
☒ Casing Repair
☐ Altering Casing
☐ Other _____
- ☐ Change of Plans
☐ New Construction
☐ Non-Routine Fracturing
☐ Water Shut-Off
☐ Conversion to Injection
☐ Dispose Water

(Note: Report results of multiple completion on Well Completion or Recompletion Report and Log form.)

13. Describe Proposed or Completed Operations (Clearly state all pertinent details, and give pertinent dates, including estimated date of starting any proposed work. If well is directionally drilled, give subsurface locations and measured and true vertical depths for all markers and zones pertinent to this work.)*

Production Casing String is to be repaired as per the attached procedure. If satisfactory gas production can not be established or the casing can not be repaired, the well will be plugged and abandoned as per the attached procedure.

Work-over / P & A operations will commence on or before December 31, 1992.

RECEIVED
MAY 26 1992
OIL CON. DIV.
DIST. 3

SEE ATTACHED FOR
CONDITIONS OF APPROVAL

RECEIVED
BLM
92 MAY 14 AM 11:44
019 FARMINGTON, N.M.

14. I hereby certify that the foregoing is true and correct

Signed Robert R. Griffie
(This space for Federal or State office use)

Title Operations Consultant

Date 5/12/92

Approved by _____
Conditions of approval, if any:

Title _____

**APPROVED
AS AMENDED**

MAY 21 1992

Title 18 U.S.C. Section 1001, makes it a crime for any person knowingly and willfully to make to any department or agency of the United States any false, fictitious or fraudulent statements or representations as to any matter within its jurisdiction.

WELLSITE ENGINEERING

WORK-OVER PROCEDURE

D. J. Simmons PC #6
1560 FSL X 1140 FWL
Section 24, T29N, R9W
San Juan County, NM

By: R. Griffiee
3/19/92

PRESENT WELLBORE CONDITION

The attached well bore diagram shows the casing and tubing setting depths. The well has been logged off. Production casing may be deteriorated above the cement top and require repair.

PROPOSED PROCEDURE

1. MIRU workover rig (daylight operation).
2. NU BOP. Make sure well is dead.
3. POOH with 1 1/4" tubing (SLM). Visually inspect tbg and determine if any is re-usable.
4. Pick up 2 3/8" work string and RIH. Run seating nipple 1 joint from bottom. Land tubing at 2870' +/-.
5. Swab well in and test. Measure gas production rate and water rate if any.

If gas production rate is satisfactory proceed to step 6. Otherwise proceed to Plugging and Abandonment procedure.

6. POOH with 2 3/8" tubing.
7. Make wireline gage ring run. Run CBL log and determine top of cement. Set wireline set drillable bridge plug at 2850' +/-.
8. Pick up test packer, RIH with 2 3/8" tbg and packer. Pressure test drillable bridge plug at 2850'. Pulling out of hole, locate any holes in pipe by pressure testing above and below packer. TOH.

9. Using an EZ drill cement retainer or equivalent, cement 4 1/2" casing / open hole annulus above the cement top determined in step 7 to the surface with premium cement. Circulate cement to surface. Squeeze cement any other deteriorated casing intervals with premium cement. Exact volumes of slurry, depths to squeeze, and precise procedure will be determined in Steps 7 and 8. Squeeze holes may have to be shot in the production string to facilitate cementing operations.
10. Using bit and casing scraper and 2 3/8" work string, drill out cement to drillable bridge plug. Pressure test casing and cement repair work to 500 psi. Drill out bridge plug. POOH and lay down 2 3/8" work string.
11. Pick up Schlumberger AD-1 tension set production pkr or equivalent and seating nipple above packer. RIH with 1 1/4" production tubing and set packer at 2250' +/-.
12. Swab well in and return to production.

PLUGGING AND ABANDONMENT PROCEDURE

1. Make wireline gage ring run. Run CBL log and determine top of cement.
2. Pick up cement retainer and TIH with 2 3/8" work string. Set retainer at 2850'.
3. Squeeze cement perforations under retainer with 25 sks premium slurry. Sting out of retainer POOH with 2 stnds tbg. Reverse circulate any cement out of tbg. TOH.
4. Pick up test packer, RIH with 2 3/8" tbg. Pressure test cement retainer at 2850'. Pulling out of hole, locate holes in pipe by pressure testing above and below packer. TOH.
5. After determining cement top and deteriorated casing zones in steps 1 and 4, Set any required cement plugs inside the casing, below the cement top, as directed by the BLM.
6. Continue plugging, with procedures to be determined based on the results of steps 1 and 4, as approved by the BLM. Plugs above the cement top will be designed to cover both inside and outside the 4 1/2" casing. Insure that the Ojo Alamo zone is isolated with plugging slurry.
7. Cut off casing head and casing and install dry hole marker.

WELLSITE ENGINEERING

R. GRIFFEE

3/19/92

NOT DRAWN TO SCALE

D. J. SIMMONS PC #6

WELL BORE DIAGRAM

8 5/8" CASING
SET AT 125'

CEMENT TOP
UNKNOWN

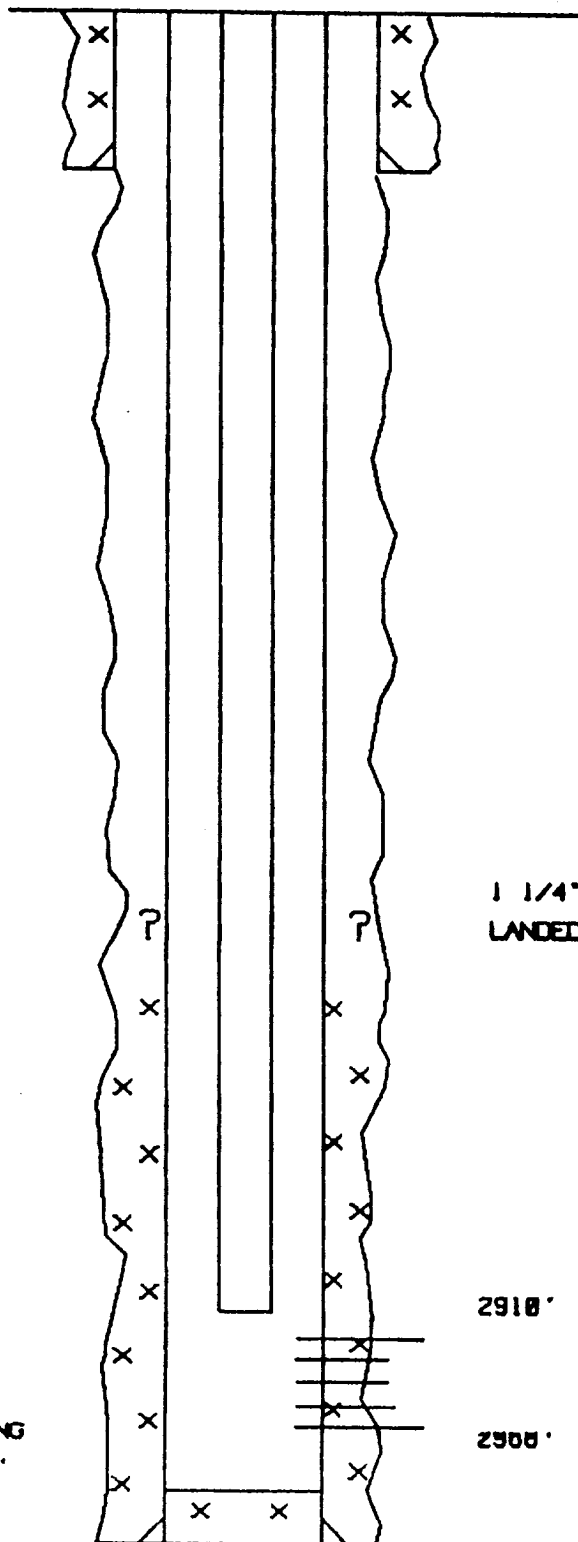
7 7/8" HOLE
DIAMETER

4 1/2" CASING
SET AT 3040'

1 1/4" TUBING
LANDED AT 2870'

2910'

2900'



Form approved.
Budget Bureau No. 42-R355.5.

5. LEASE DESIGNATION AND SERIAL NO.
Simmons - P.C. No. 6
SP 080000-A

6. IF INDIAN, ALLOTTEE OR TRIBE NAME

7. UNIT AGREEMENT NAME

S. FARM OR LEASE NAME

Simmons - P.C.

9. WELL NO.

No. 6

10. FIELD AND POOL, OR WILDCAT

Blanco - P.C.

11. SEC., T., R., M., OR BLOCK AND SURVEY
OR AREA

Sec. 24, T29N., R9W
N.M.P.M.

12. COUNTY OR
PARISH
San Juan

13. STATE
N.M.

15. DATE SPUDDED 10-6-66	16. DATE T.D. REACHED 10-26-66	17. DATE COMPL. (Ready to prod.) 12-14-66	18. ELEVATIONS (DF, RKB, RT, GR, ETC.)* 6412.5 K.B.	19. ELEV. CASINGHEAD 6402 GR.
-----------------------------	-----------------------------------	--	--	----------------------------------

20. TOTAL DEPTH, MD & TVD 3065	21. PLUG, BACK T.D., MD & TVD 3010	22. IF MULTIPLE COMPL., HOW MANY* Single	23. INTERVALS DRILLED BY →	ROTARY TOOLS All	CABLE TOOLS --
-----------------------------------	---------------------------------------	--	----------------------------------	---------------------	-------------------

24. PRODUCING INTERVAL(S), OF THIS COMPLETION—TOP, BOTTOM, NAME (MD AND TVD)* 2910 - 2968 Pictured Cliffs Sand	25. WAS DIRECTIONAL SURVEY MADE Yes
---	--

26. TYPE ELECTRIC AND OTHER LOGS RUN	27. WAS WELL CORED
Density Log (Welex)	No

28. CASING RECORD (Report all strings set in well)					
CASING SIZE	WEIGHT, LB./FT.	DEPTH SET (MD)	HOLE SIZE	CEMENTING RECORD	AMOUNT PULLED
5-5/8"	30#	125'	12 1/4"	80 SX	None
2 1/2"	9#	3040'	7-7/8"	300 SX	None

29. LINER RECORD					30. TUBING RECORD		
SIZE	TOP (MD)	BOTTOM (MD)	BACKS CEMENT*	SCREEN (MD)	SIZE	DEPTH SET (MD)	PACKER SET (MD)
					1 1/2"	2870	

<p>31. PERFORATION RECORD (Interval, size and number)</p> <p>2910-20, 2922-28, 2929-68, 1/ Ft.</p>	<p>32. ACID, SHOT, FRACTURE, CEMENT SQUEEZE, ETC.</p> <table border="1"> <thead> <tr> <th data-bbox="777 1387 1050 1398">DEPTH INTERVAL (MD)</th> <th data-bbox="1050 1387 1351 1398">AMOUNT AND KIND OF MATERIAL USED</th> </tr> </thead> <tbody> <tr> <td data-bbox="777 1398 1050 1408">2910-2968</td> <td data-bbox="1050 1398 1351 1408">30,000# Sand</td> </tr> <tr> <td data-bbox="777 1408 1050 1419"></td> <td data-bbox="1050 1408 1351 1419">30,000 Gal. Water</td> </tr> <tr> <td data-bbox="777 1419 1050 1430"></td> <td data-bbox="1050 1419 1351 1430"></td> </tr> <tr> <td data-bbox="777 1430 1050 1440"></td> <td data-bbox="1050 1430 1351 1440"></td> </tr> </tbody> </table>	DEPTH INTERVAL (MD)	AMOUNT AND KIND OF MATERIAL USED	2910-2968	30,000# Sand		30,000 Gal. Water				
DEPTH INTERVAL (MD)	AMOUNT AND KIND OF MATERIAL USED										
2910-2968	30,000# Sand										
	30,000 Gal. Water										

PRODUCTION		
DATE FIRST PRODUCTION	PRODUCTION METHOD (Flowing, gas lift, pumping—size and type of pump)	WELL STATUS (Producing or shut-in)

DATE OF TEST	HOURS TESTED	CHOKE SIZE	PROD'N. FOR TEST PERIOD	OIL—BBL.	GAS—MCF.	WATER—BBL.	GAS-OIL RATIO
12-14-66	3 hrs	3/4"	→		1,509 I.P.		
FLOW. TUBING PRESS.	CASING PRESSURE	CALCULATED 24-HOUR RATE	OIL—BBL.	GAS—MCF.	WATER—BBL.	OIL GRAVITY-API (CORR.)	
128	876 S.I.	→		1,541 AOF			

14. DISPOSITION OF GAS (Sold, used for fuel, vented, etc.)		TEST WITNESSED BY N. Tefteller
--	--	--

35. LIST OF ATTACHMENTS

38. I hereby certify that the foregoing and attached information is complete and correct as determined from all available records

SIGNED A. B. Geren, Jr. TITLE Supt.

DATE 1-12-67

*(See Instructions and Spaces for Additional Data on Reverse Side)

IN REPLY REFER TO
(019)

UNITED STATES DEPARTMENT OF THE INTERIOR

BUREAU OF LAND MANAGEMENT
FARMINGTON RESOURCE AREA
1235 LA PLATA HIGHWAY
FARMINGTON, NEW MEXICO 87401

Attachment to Notice of

Re: Permanent Abandonment

Intention to Abandon

Well: #6 Simmons

CONDITIONS OF APPROVAL

1. Plugging operations authorized are subject to the attached "General Requirements for Permanent Abandonment of Wells on Federal Leases."
2. Mark Kelly with the Farmington Office is to be notified at least 24 hours before the plugging operations commence (505) 326-6201.
3. Blowout prevention equipment is required.
4. The following modifications to your plugging program are to be made (when applicable): *After squeezing the P.C. ports under a retainer @ 2850' and spotting a 50' cnt. plug on top of the retainer, proceed with the following as a minimum:*
 - 1.) Spot a cement plug from 2800' to 2703' plus 50% excess. (*Fruitland 2753'*)
 - 2.) From CBL Log, if possible, perforate @ 2123 and place a cement plug from 2123' to 1833' plus 100% excess, inside & outside of casing. (*Oso Alamo 1883-2073'*).
 - 3.) Perforate @ 700 and place a cement plug from 700' to 600' plus 100% excess, inside & outside of casing. (*Nacimiento-650'*)
 - 4.) Perforate @ 175' and circulate cnt. to the surface

Office Hours: 7:45 a.m. to 4:30 p.m.

Mod Required between Plugs