

UNITED STATES  
DEPARTMENT OF THE INTERIOR  
BUREAU OF LAND MANAGEMENT

APPLICATION FOR PERMIT TO DRILL, DEEPEN, OR PLUG BACK

**RECEIVED**  
NOV 23 1990

**OIL CON. DIV. 1**  
DIST. 3

1a. TYPE OF WORK  
PLUG BACK  
1b. TYPE OF WELL  
GAS

5. LEASE NUMBER

SF - 077137-077317

6. IF INDIAN, ALL. OR TRIBE NAME

2. OPERATOR

Southland Royalty Company

7. UNIT AGREEMENT NAME

3. ADDRESS & PHONE NO. OF OPERATOR

P.O. BOX 4289  
FARMINGTON, NM 87499  
(505) 326-9700

8. FARM OR LEASE NAME

Cooper

9. WELL NO.

#2

4. LOCATION OF WELL

990' FSL, 990' FWL

10. FIELD, POOL, OR WILDCAT

BASIN FRUITLAND COAL

11. SEC. T. R. M OR BLK.

Section 7, T29N, R11W

14. DISTANCE IN MILES FROM NEAREST TOWN

12. COUNTY

San Juan

13. STATE

NM

15. DISTANCE FROM  
PROPOSED LOCATION  
TO NEAREST PROPERTY  
OR LEASE LINE.

16. ACRES IN LEASE

17. ACRES ASSIGNED TO WELL

305.76

18. DISTANCE FROM  
PROPOSED LOCATION  
TO NEAREST WELL DR.  
COMPL., OR APPLIED  
FOR ON THIS LEASE.

19. PROPOSED DEPTH

20. ROTARY OR CABLE TOOLS

21. ELEVATIONS (DF, FT, GR, ETC.)

5668' DF

22. APPROX. DATE WORK WILL START

23. PROPOSED CASING AND CEMENTING PROGRAM

\*SEE OPERATIONS PLAN

24. AUTHORIZED BY:  (CRB)  
REGULATORY AFFAIRS

10-19-90  
DATE

PERMIT NO. \_\_\_\_\_ APPROVAL DATE \_\_\_\_\_

APPROVED BY \_\_\_\_\_ TITLE \_\_\_\_\_ DATE \_\_\_\_\_ **APPROVED**

NOTE: THIS FORMAT IS ISSUED IN LIEU OF US BLM FORM 3160-3. AS AMENDED  
(NO ADDITIONAL DIRT WORK WILL BE REQUIRED)

NOV 15 1990  
KON TOWNSEND  
AREA MANAGER



Submit to Appropriate  
District Office  
State Leases - 4 copies  
Fee Leases - 3 copies

State of New Mexico  
Energy, Minerals and Natural Resources Department

Form C-102  
Revised 1-1-89

OIL CONSERVATION DIVISION

DISTRICT I  
P.O. Box 1980, Hobbs, NM 88240

P.O. Box 2088

Santa Fe, New Mexico 87504-2088

DISTRICT II  
P.O. Drawer DD, Artesia, NM 88210

DISTRICT III  
1000 Rio Brazos Rd., Aztec, NM 87410

WELL LOCATION AND ACREAGE DEDICATION PLAT

All Distances must be from the outer boundaries of the section

Operator Southland Royalty Co.			Lease Cooper (SF-077317)		Well No. 2
Unit Letter M	Section 7	Township 29 North	Range 11 West	County San Juan	
Actual Footage Location of Well: 990 feet from the South line and 990 feet from the West line					
Ground level Elev. 5658'	Producing Formation Fruitland Coal		Pool Basin	Dedicated Acreage: 305.76 Acres	

1. Outline the acreage dedicated to the subject well by colored pencil or ink on the plat below.
2. If more than one lease is dedicated to the well, outline each and identify the ownership thereof (both as to working interest and royalty).
3. If more than one lease of different ownership is dedicated to the well, have the interest of all owners been consolidated by communitization, unitization, force-pooling, etc.?  
☐ Yes ☐ No If answer is "yes" type of consolidation \_\_\_\_\_

If answer is "no" list the owners and tract descriptions which have actually been consolidated. (Use reverse side of this form if necessary.)

No allowable will be assigned to the well until all interests have been consolidated (by communitization, unitization, force-pooling, or otherwise) or until a non-standard unit, eliminating such interest, has been approved by the Division.

Not re-surveyed prepared  
from a plat by H. H. Miller  
dated 5-20-46

OPERATOR CERTIFICATION

I hereby certify that the information contained herein is true and complete to the best of my knowledge and belief.

*Peggy Bradfield*  
Signature

Peggy Bradfield

Printed Name

Regulatory Affairs

Position

Southland Royalty Co

Company

10-19-90

Date

SURVEYOR CERTIFICATION

I hereby certify that the well location shown on this plat was plotted from field notes of actual surveys made by me or under my supervision, and that the same is true and correct to the best of my knowledge and belief.

10-17-90

Date Surveyed

*Neale C. Edwards*

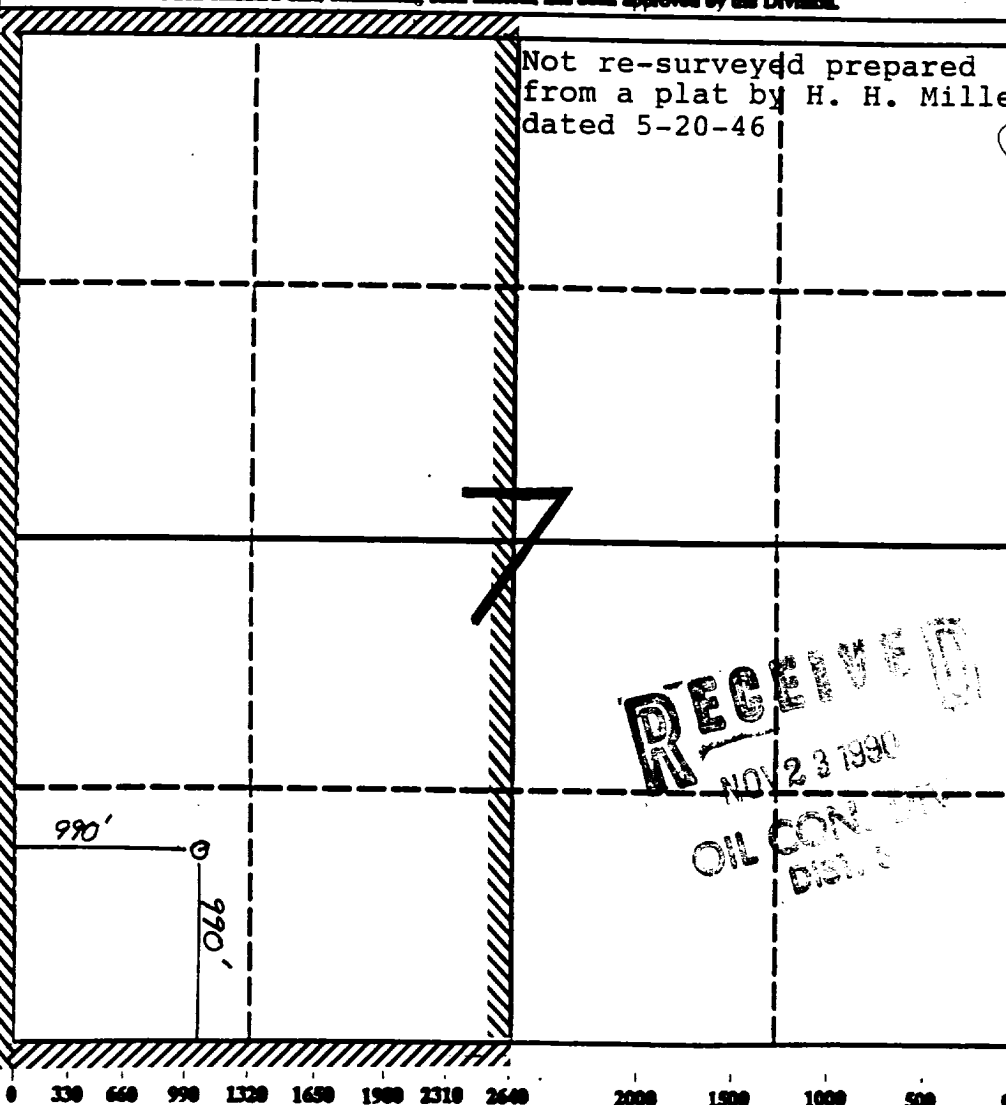
Signature of Surveyor

Professional Surveyor



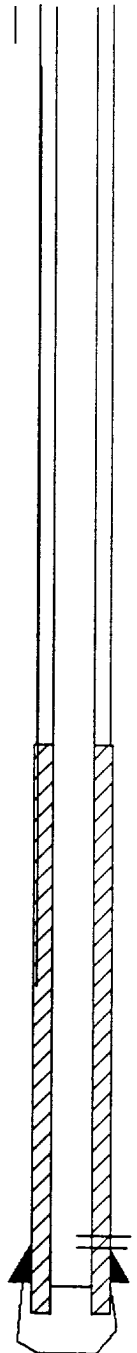
Certification of Surveyor

Neale C. Edwards



# COOPER #2 WELLBORE DIAGRAMS

BEFORE R/C



16" CSG SET @ 20'  
(UNCERTAIN ABOUT SURF. CSG  
SET WITH CABLE RIG)

TOC @ 390' (CALC 100%)

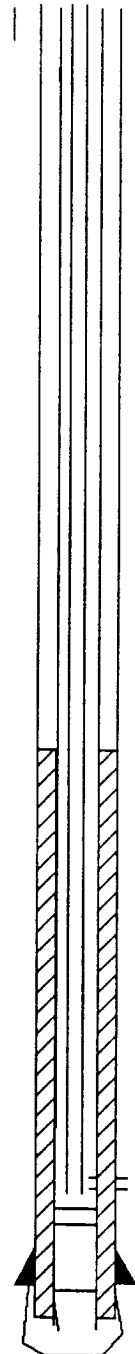
OJO ALAMO 496'

KIRTLAND 628'

FRUITLAND 1498'

PICTURED CLIFFS 1804'  
PC PERFS 1830'- 1870' 4SPF  
5.5" 14# CSG @ 1816'  
3.5" 6.9# CSG CMT @ 1935'  
PBTD @ 1935'  
OH CEMENTED OFF  
OH TD 1938'

AFTER R/C

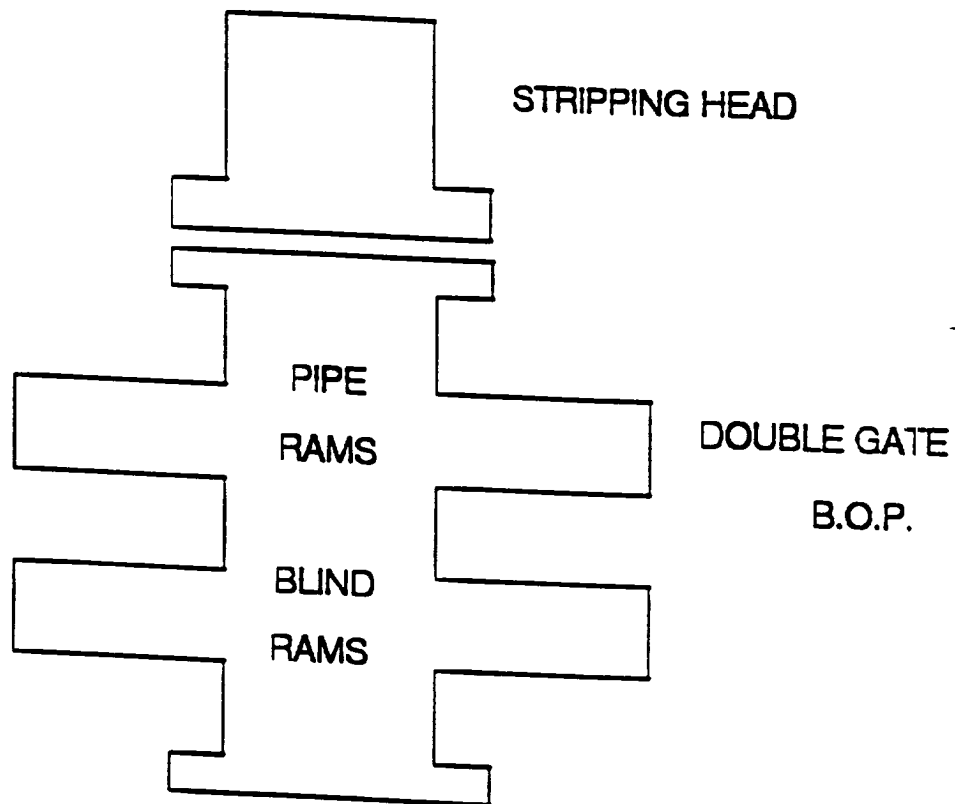


SET 1 1/2" 15' ABOVE CIBP  
PERF FC  
SET CIBP ABOVE UPPER  
PC PERF @ 1930'

Cooper #2  
Procedure to Recomplete Fruitland Coal

1. Check location anchors.
2. MOL and rig up daylight pulling unit with rig pump and blow tank.
3. Kill PC with water as needed. ND wellhead. NU BOP. TOOH with 1" tubing.
4. Run CNL-GR-CCL. Set cast iron bridge plug at 1825'.
5. Pressure test casing to 3000 psi for 15 minutes.
6. Perforate the Fruitland Coal interval.
7. Pick up retrievable bridge plug and packer. TIH with 1 1/2" tubing. Isolate each coal interval and breakdown. Evaluate well for treatment.
8. Fracture stimulate well.
9. Open well through variable choke and flow back slowly.
10. TIH with 1 1/2" tubing with expendable check on bottom. Blow well with air.
11. Obtain and record gauges. When returns dry up, TOOH.
12. TIH with 1 1/2" 2.9# EUE tubing with pump out plug on bottom and common pump seating nipple one joint off bottom. Land tubing at 1810'. Nipple down BOP. Nipple up wellhead.

# WORKOVER / RECOMPLETION B.O.P. SCHEMATIC



MINIMUM: 6" 2000 PSI DOUBLE GATE B.O.P.  
MAXIMUM ANTICIPATED SHUT-IN WELLHEAD  
PRESSURE IS LESS THAN 2000 PSI