

UNITED STATES  
DEPARTMENT OF THE INTERIOR  
GEOLOGICAL SURVEY

APPLICATION FOR PERMIT TO DRILL, DEEPEN, OR PLUG BACK

1a. TYPE OF WORK

DRILL ☒

DEEPEN ☐

PLUG BACK ☐

b. TYPE OF WELL

OIL  
WELL ☒

GAS  
WELL ☐

OTHER ☐

SINGLE  
ZONE ☒

MULTIPLE  
ZONE ☐

2. NAME OF OPERATOR

PAN AMERICAN PETROLEUM CORPORATION

3. ADDRESS OF OPERATOR

P. O. Box 480, Farmington, New Mexico

4. LOCATION OF WELL (Report location clearly and in accordance with any State requirements.)\*

At surface

2310' PSL & 330' PSL Section 7, T-29N, R-16W

At proposed prod. zone

Same

14. DISTANCE IN MILES AND DIRECTION FROM NEAREST TOWN OR POST OFFICE\*

7 miles southeast of Shiprock, New Mexico

15. DISTANCE FROM PROPOSED\*

LOCATION TO NEAREST  
PROPERTY OR LEASE LINE, FT.  
(Also to nearest drlg. unit line, if any)

330'

16. NO. OF ACRES IN LEASE

4160

17. NO. OF ACRES ASSIGNED  
TO THIS WELL

40

18. DISTANCE FROM PROPOSED LOCATION\*  
TO NEAREST WELL, DRILLING, COMPLETED,  
OR APPLIED FOR, ON THIS LEASE, FT.

4,500'

19. PROPOSED DEPTH

730'

20. ROTARY OR CABLE TOOLS

Rotary

21. ELEVATIONS (Show whether DF, RT, GR, etc.)

To be reported later

22. APPROX. DATE WORK WILL START\*

April 22, 1967

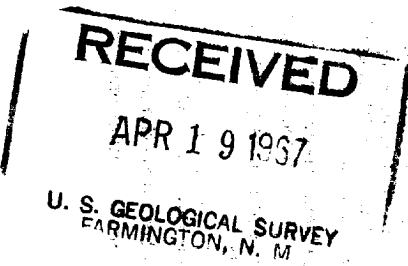
23.

PROPOSED CASING AND CEMENTING PROGRAM

SIZE OF HOLE	SIZE OF CASING	WEIGHT PER FOOT	SETTING DEPTH	QUANTITY OF CEMENT
9-5/8"	7-5/8"	240	60'	Cement to surface
6-1/8"	4-1/2"	9.50	730'	50 sacks

Operator plans to set 4-1/2" casing at top of Dakota, drill 1-2' into Dakota pay sand and complete in open hole.

Copies of Location Plat attached.



IN ABOVE SPACE DESCRIBE PROPOSED PROGRAM: If proposal is to deepen or plug back give data on present productive zone and proposed new productive zone. If proposal is to drill or deepen directionally, give pertinent data on subsurface locations and measured and true vertical depths. Give blowout preventer program, if any.

24.

SIGNED

C. J. Boyce

TITLE

Senior Engineer

DATE

April 18, 1967

(This space for Federal or State office use)

PERMIT NO.

APPROVAL DATE

APPROVED BY

SM

TITLE

DATE

CONDITIONS OF APPROVAL, IF ANY:

**NEW MEXICO OIL CONSERVATION COMMISSION  
WELL LOCATION AND ACERAGE DEDICATION PLAT**

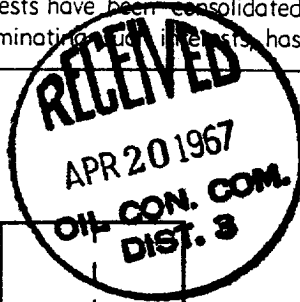
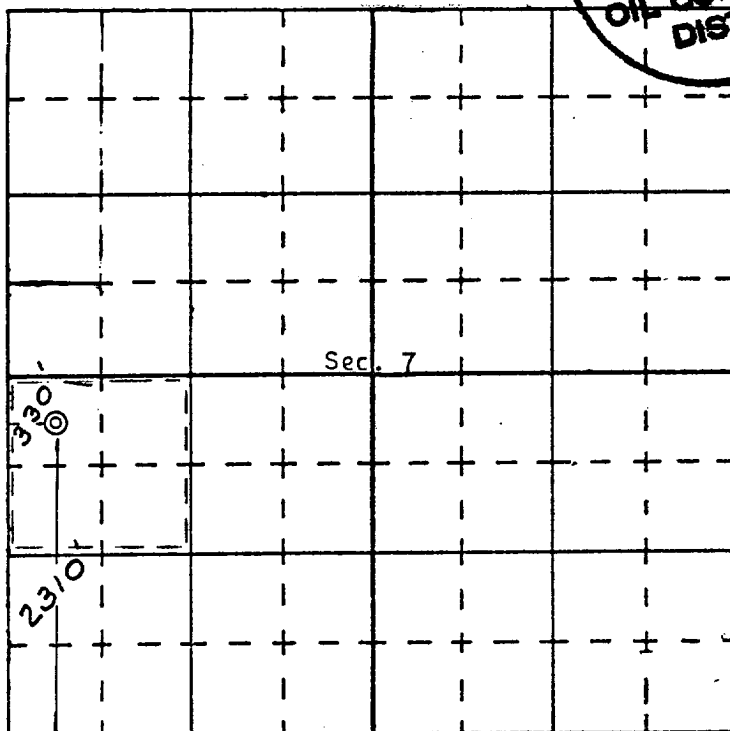
All distances must be from the outer boundaries of the Section

Operator <b>PAN AMERICAN PETROLEUM CORPORATION</b>			Lease <b>USG Sec. 18</b>		Well No. <b>22</b>
Unit Letter <b>L</b>	Section <b>7</b>	Township <b>29 North</b>	Range <b>16 West</b>	County <b>San Juan</b>	
Actual Footage Location of Well: <b>2310</b> feet from the <b>South</b> line and <b>330</b> feet from the <b>West</b> line					
Ground Level Elev. <b>REPORT LATER</b>	Producing Formation <b>DAKOTA</b>		Pool <b>NORTH HOGBACK-DAKOTA</b>	Dedicated Acreage: <b>40</b> Acres	

1. Outline the acreage dedicated to the subject well by colored pencil or hachure marks on the plat below.
2. If more than one lease is dedicated to the well, outline each and identify the ownership thereof (both as to working interest and royalty),
3. If more than one lease of different ownership is dedicated to the well, have the interests of all owners been consolidated by communitization, unitization, force-pooling, etc?  
☐ Yes   ☐ No   If answer is "yes," type of consolidation .....

If answer is "no," list the owners and tract descriptions which have actually consolidated. (Use reverse side of this Form if necessary.) .....

No allowable will be assigned to the well until all interests have been consolidated (by communitization, unitization, forced-pooling, or otherwise) or until a non standard unit, eliminating such interests, has been approved by the Commission.



**CERTIFICATION**

I hereby certify that the information contained herein is true and complete to the best of my knowledge and belief.

Name C. J. Boyce  
 Position C. J. Boyce  
Senior Engineer  
 Company PAN AMERICAN PETROLEUM CORP.  
 Date \_\_\_\_\_

April 18, 1967

I hereby certify that the well location shown on this plat was plotted from field notes of actual surveys made by me or under my supervision, and that the same is true and correct to the best of my knowledge and belief.

Date Surveyed \_\_\_\_\_  
April 12, 1967  
 Registered Professional Engineer  
 and/or Land Surveyor

E. J. Carshaw  
 Certificate No. 3602