

UNITED STATES
DEPARTMENT OF THE INTERIOR
GEOLOGICAL SURVEY

045
30-047-20149

APPLICATION FOR PERMIT TO DRILL, DEEPEN, OR PLUG BACK

1a. TYPE OF WORK
DRILL ☒ DEEPEN ☐ PLUG BACK ☐

b. TYPE OF WELL
OIL WELL ☐ GAS WELL ☒ OTHER ☐ SINGLE ZONE ☒ MULTIPLE ZONE ☐

2. NAME OF OPERATOR
Tenneco Oil Company

3. ADDRESS OF OPERATOR
P. O. Box 1714, Durango, Colorado

4. LOCATION OF WELL (Report location clearly and in accordance with any State requirements.)
At surface
915 FSL, 1785 FEL
At proposed prod. zone Unit 0

14. DISTANCE IN MILES AND DIRECTION FROM NEAREST TOWN OR POST OFFICE*

15. DISTANCE FROM PROPOSED* LOCATION TO NEAREST PROPERTY OR LEASE LINE, FT. (Also to nearest drlg. unit line, if any)

16. NO. OF ACRES IN LEASE
160

17. NO. OF ACRES ASSIGNED TO THIS WELL
160

18. DISTANCE FROM PROPOSED LOCATION* TO NEAREST WELL, DRILLING, COMPLETED, OR APPLIED FOR, ON THIS LEASE, FT.

19. PROPOSED DEPTH
3275

20. ROTARY OR CABLE TOOLS
Rotary

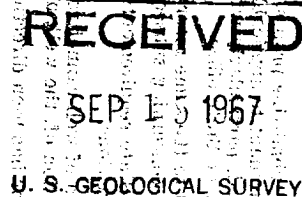
21. ELEVATIONS (Show whether DF, RT, GR, etc.)
6315 Ungr. Gr.

22. APPROX. DATE WORK WILL START*

23. PROPOSED CASING AND CEMENTING PROGRAM

SIZE OF HOLE	SIZE OF CASING	WEIGHT PER FOOT	SETTING DEPTH	QUANTITY OF CEMENT
12-1/4"	8-5/8"	20 & 24#	150	Cmt to surface.
7-7/8"	3-1/2"	7.7#	3275	Circulate back to surface.

We will rig up and drill to an approximate T.D. of 3275. Log, run casing as shown above, perforate and frac and complete as a Blanco Pictured Cliffs gas well. Run deliverability tests.



IN ABOVE SPACE DESCRIBE PROPOSED PROGRAM: If proposal is to deepen or plug back, give data on present productive zone and proposed new productive zone. If proposal is to drill or deepen directionally, give pertinent data on subsurface locations and measured and true vertical depths. Give blowout preventer program, if any.

24. SIGNED M. K. Wagner TITLE _____ DATE 9/14/67

(This space for Federal or State office use)

PERMIT NO. 40 APPROVAL DATE _____

APPROVED BY _____ TITLE _____ DATE _____

CONDITIONS OF APPROVAL, IF ANY:

USGS (5)
Cont (1)

*See Instructions On Reverse Side

**NEW MEXICO OIL CONSERVATION COMMISSION
WELL LOCATION AND ACERAGE DEDICATION PLAT**

All distances must be from the outer boundaries of the Section

Operator TENNECO OIL COMPANY			Lease FLORANCE		Well No 102
Unit Letter 0	Section 18	Township 30 North	Range 8 West	County San Juan	
Actual Footage Location of Well: 915 feet from the South line and 1785 feet from the East line Ground Level Elev. 6315' ungraded Producing Formation Blanco Pictured Cliffs Pool Blanco Pictured Cliffs Dedicated Average: 160 SE/4 Acres					

1. Outline the acreage dedicated to the subject well by colored pencil or hachure marks on the plat below.
2. If more than one lease is dedicated to the well, outline each and identify the ownership thereof (both as to working interest and royalty),
3. If more than one lease of different ownership is dedicated to the well, have the interests of all owners been consolidated by communitization, unitization, force-pooling, etc?

() Yes () No If answer is "yes," type of consolidation

If answer is "no," list the owners and tract descriptions which have actually consolidated. (Use reverse side of this form if necessary.)

No allowable will be assigned to the well until all interests have been consolidated (by communitization, unitization, forced-pooling, or otherwise) or until a non standard unit, eliminating such interests, has been approved by the Commission.

RECEIVED

SEP 18 1967

OIL CON. COM.
DIST. 3

CERTIFICATION

I hereby certify that the information contained herein is true and complete to the best of my knowledge and belief.

Name M. K. Wagner

Position _____

Company Tenneco Oil Company

Date 9/14/67

I hereby certify that the well location shown on this plat was plotted from field notes of actual surveys made by me or under my supervision, and that the same is true and correct to the best of my knowledge and belief.

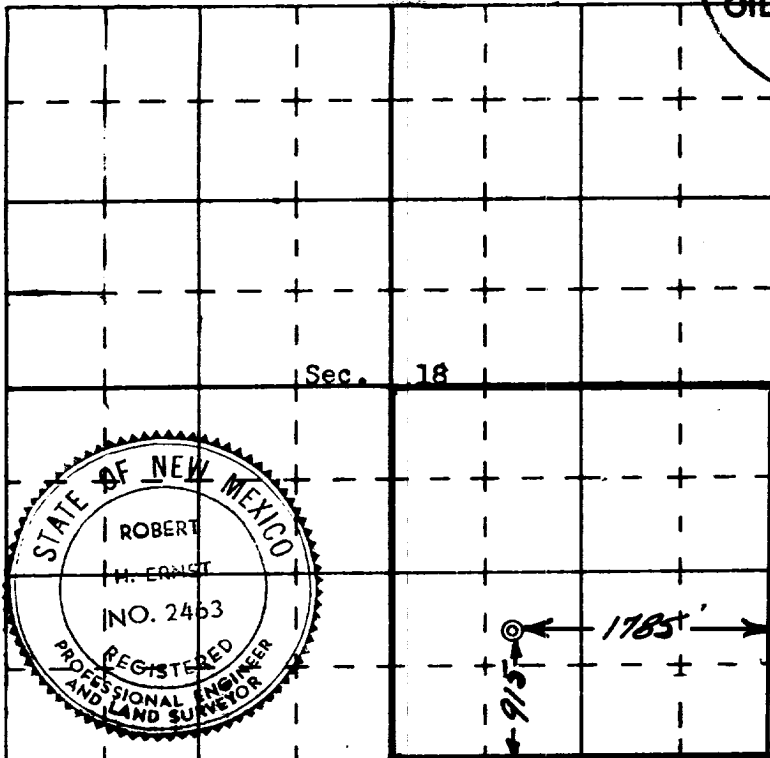
12 September 1967

Date Surveyed _____

Registered Professional Engineer
and/or Land Surveyor

Robert H. Ernst
New Mexico PE & LS 2463

Certificate No. _____



Ernst Engineering Co.
Durango, Colorado