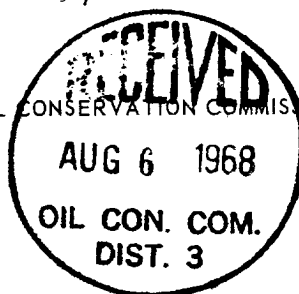


NEW MEXICO OIL CONSERVATION COMMISSION

Form C-101  
Revised 1-1-65 30-645-20324

NO. OF COPIES RECEIVED	6
DISTRIBUTION	
SAFETY	1
FILE	1
G.S.	2
LAND OFFICE	1
OPERATOR	1



5A. Indicate Type of Lease
STATE <input checked="" type="checkbox"/> FEE <input type="checkbox"/>
5. State Oil & Gas Lease No.
E-5184-12

## APPLICATION FOR PERMIT TO DRILL, DEEPEN, OR PLUG BACK

1a. Type of Work		7. Unit Agreement Name	
DRILL <input checked="" type="checkbox"/> DEEPEN <input type="checkbox"/> PLUG BACK <input type="checkbox"/>		--	
b. Type of Well		8. Farm or Lease Name	
OIL WELL <input type="checkbox"/> GAS WELL <input checked="" type="checkbox"/> OTHER <input type="checkbox"/>		State Com. "AM"	
2. Name of Operator		9. Well No.	
Pubco Petroleum Corporation		37	
3. Address of Operator		10. Field and Pool, or Wildcat	
P. O. Box 869, Albuquerque, New Mexico 87103		Basin Dakota	
4. Location of Well		12. County	
UNIT LETTER E LOCATED 1980 FEET FROM THE North LINE		San Juan	
AND 790 FEET FROM THE West LINE OF SEC. 2 TWP. 30N RGE. 8W NMPM			
		19. Proposed Depth	
		+ 7820'	
		19A. Formation	
		Dakota	
		20. Rotary or C.T.	
		Rotary	
21. Elevations (Show whether DF, RT, etc.)		21B. Drilling Contractor	
6296 GR		Arapahoe Drilling Co.	
21A. Kind & Status Plug. Bond		22. Approx. Date Work will start	
Blanket		August 25, 1968	

23.

## PROPOSED CASING AND CEMENT PROGRAM

SIZE OF HOLE	SIZE OF CASING	WEIGHT PER FOOT	SETTING DEPTH	SACKS OF CEMENT	EST. TOP
15"	10-3/4	32.75	+ 300'	280	Surface
9-5/8"	7-5/8	26.40	+ 3500'	400	Surface
6-3/4"	5"	15.00	+ 7820'	300	3400'

We propose to:

Mud drill the surface and intermediate hole and cement the surface and intermediate casing to surface.

Gas drill the remaining hole and single stage cement production casing back into the intermediate casing.

Log the gas drilled hole with the Induction-Gammaray and Formation Density Logs.

Perforate and sand-water frac in two stages.

APPROVAL VALID  
FOR 90 DAYS UNLESS  
DRILLING COMMENCED,  
EXPIRES 7/27/68

IN ABOVE SPACE DESCRIBE PROPOSED PROGRAM: IF PROPOSAL IS TO DEEPEN OR PLUG BACK, GIVE DATA ON PRESENT PRODUCTIVE ZONE AND PROPOSED NEW PRODUCTIVE ZONE. GIVE BLOWOUT PREVENTER PROGRAM, IF ANY.

I hereby certify that the information above is true and complete to the best of my knowledge and belief.

Signed Donald C. Walker Title Petroleum Engineer Date August 2, 1968

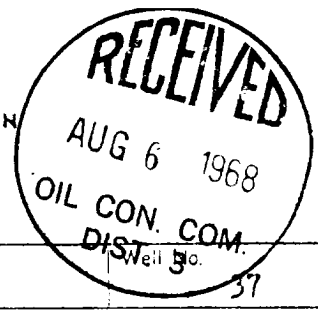
(This space for State Use)

APPROVED BY Lucy R. Smith TITLE Asst. Dir. III DATE 8-6-68

CONDITIONS OF APPROVAL, IF ANY:

**NEW MEXICO OIL CONSERVATION COMMISSION  
WELL LOCATION AND ACERAGE DEDICATION PLAT**

All distances must be from the outer boundaries of the Section



Operator <b>PUBCO PETROLEUM CORP.</b>			Lease <b>STATE COM AM</b>		
Unit Letter <b>E</b>	Section <b>2</b>	Township <b>30 N</b>	Range <b>8W</b>	County <b>SAN JUAN</b>	
Actual Footage Location of Well: <b>1980</b> feet from the <b>north</b> line and <b>790</b> feet from the <b>west</b> line					
Ground Level Elev. <b>6296</b>	Producing Formation <b>Dakota</b>	Pool <b>Basin</b>	Dedicated Acreage: ( $\frac{79}{100}$ ) <b>324.10</b> Acres		

- Outline the acreage dedicated to the subject well by colored pencil or hatchure marks on the plat below.
- If more than one lease is dedicated to the well, outline each and identify the ownership thereof (both as to working interest and royalty),
- If more than one lease of different ownership is dedicated to the well, have the interests of all owners been consolidated by communitization, unitization, force-pooling, etc?

(X) Yes \* ( ) No If answer is "yes," type of consolidation Communitization

If answer is "no," list the owners and tract descriptions which have actually consolidated. (Use reverse side of this form if necessary.)

No allowable will be assigned to the well until all interests have been consolidated (by communitization, unitization, forced-pooling, or otherwise) or until a non standard unit, eliminating such interests, has been approved by the Commission.

\* Communitization Agreement is being processed.

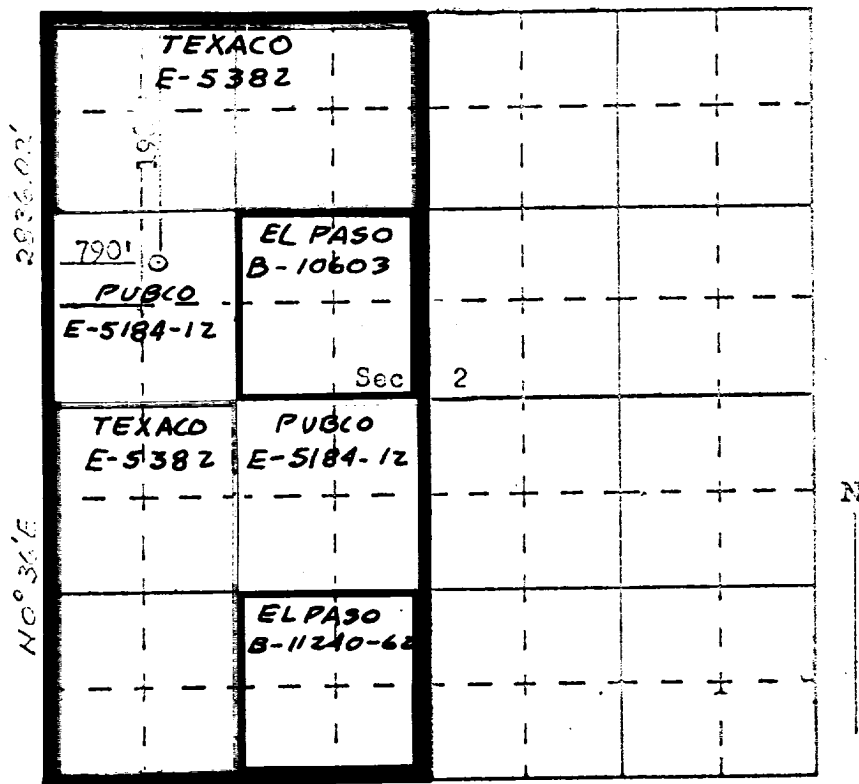
**CERTIFICATION**

I hereby certify that the information contained herein is true and complete to the best of my knowledge and belief.

Donald C. Walker  
 Name  
**Donald C. Walker**  
 Position  
**Petroleum Engineer**  
 Company  
**Pubco Petroleum Corporation**  
 Date  
**August 2, 1968**

I hereby certify that the well location shown on this plat was plotted from field notes of actual surveys made by me or under my supervision, and that the same is true and correct to the best of my knowledge and belief.

July 22, 1968  
 Date Surveyed Stephen H. Kinney  
**Stephen H. Kinney**  
 Registered Professional Engineer  
 and/or Land Surveyor



B-11240-62 (record title in El Paso -- W.I. owned by J. Glenn Turner)

**NY 803**  
 Certificate No.