

UNITED STATES  
DEPARTMENT OF THE INTERIOR  
GEOLOGICAL SURVEY

## APPLICATION FOR PERMIT TO DRILL, DEEPEN, OR PLUG BACK

## 1a. TYPE OF WORK

DRILL ☒DEEPEN ☐PLUG BACK ☐

## b. TYPE OF WELL

OIL  
WELL ☒GAS  
WELL ☐

OTHER

SINGLE  
ZONE ☐MULTIPLE  
ZONE ☐

## 2. NAME OF OPERATOR

W. C. IMBT

## 3. ADDRESS OF OPERATOR

210 West 38th Street, Farmington, New Mexico - 87401

## 4. LOCATION OF WELL (Report location clearly and in accordance with any State requirements.\*)

At surface

1485' FSL &amp; 2475' FWL

At proposed prod. zone

## 14. DISTANCE IN MILES AND DIRECTION FROM NEAREST TOWN OR POST OFFICE\*

7 1/2 miles east of Shiprock, New Mexico

## 15. DISTANCE FROM PROPOSED\*

LOCATION TO NEAREST  
PROPERTY OR LEASE LINE, FT.  
(Also to nearest drlg. unit line, if any)

## 16. NO. OF ACRES IN LEASE

4800

17. NO. OF ACRES ASSIGNED  
TO THIS WELL

40

18. DISTANCE FROM PROPOSED LOCATION\*  
TO NEAREST WELL, DRILLING, COMPLETED,  
OR APPLIED FOR, ON THIS LEASE, FT.

1320'

## 19. PROPOSED DEPTH

750'

## 20. ROTARY OR CABLE TOOLS

Both

## 21. ELEVATIONS (Show whether DF, RT, GR, etc.)

5039' Gr.

## 22. APPROX. DATE WORK WILL START\*

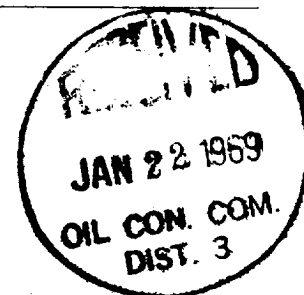
January 25, 1969

## 23.

## PROPOSED CASING AND CEMENTING PROGRAM

SIZE OF HOLE	SIZE OF CASING	WEIGHT PER FOOT	SETTING DEPTH	QUANTITY OF CEMENT
9"	7"	20#	40'	10 sacks
5-5/8"	4 1/2"	9.5#	755'	50 sacks

1. Will drill surface hole with cable tools.
2. Set 7" casing through surface sand and boulders.
3. Cement to surface.
4. Drill out below surface pipe with rotary.
5. Cement 4 1/2" production string on top Dakota.
6. Drill pay with air - run 2-3/8" tubing.
7. Complete open hole - turn into tank.



RECEIVED

JAN 21 1969

U. S. GEOLOGICAL SURVEY  
FARMINGTON, N. M.

IN ABOVE SPACE DESCRIBE PROPOSED PROGRAM: If proposal is to deepen or plug back, give data on present production and proposed new productive zone. If proposal is to drill or deepen directionally, give pertinent data on subsurface locations and measured and true vertical depths. Give blowout preventer program, if any.

## 24.

ORIGINAL SIGNED BY

SIGNED

W. C. IMBT

TITLE

Operator

DATE

January 21, 1969

(This space for Federal or State office use)

PERMIT NO.

APPROVAL DATE

APPROVED BY

TITLE

DATE

CONDITIONS OF APPROVAL, IF ANY:

NEW MEXICO OIL CONSERVATION COMMISSION  
WELL LOCATION AND ACREAGE DEDICATION PLAT

Form C-102  
Supersedes C-128  
Effective 1-1-65

All distances must be from the outer boundaries of the Section.

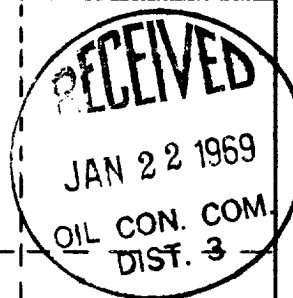
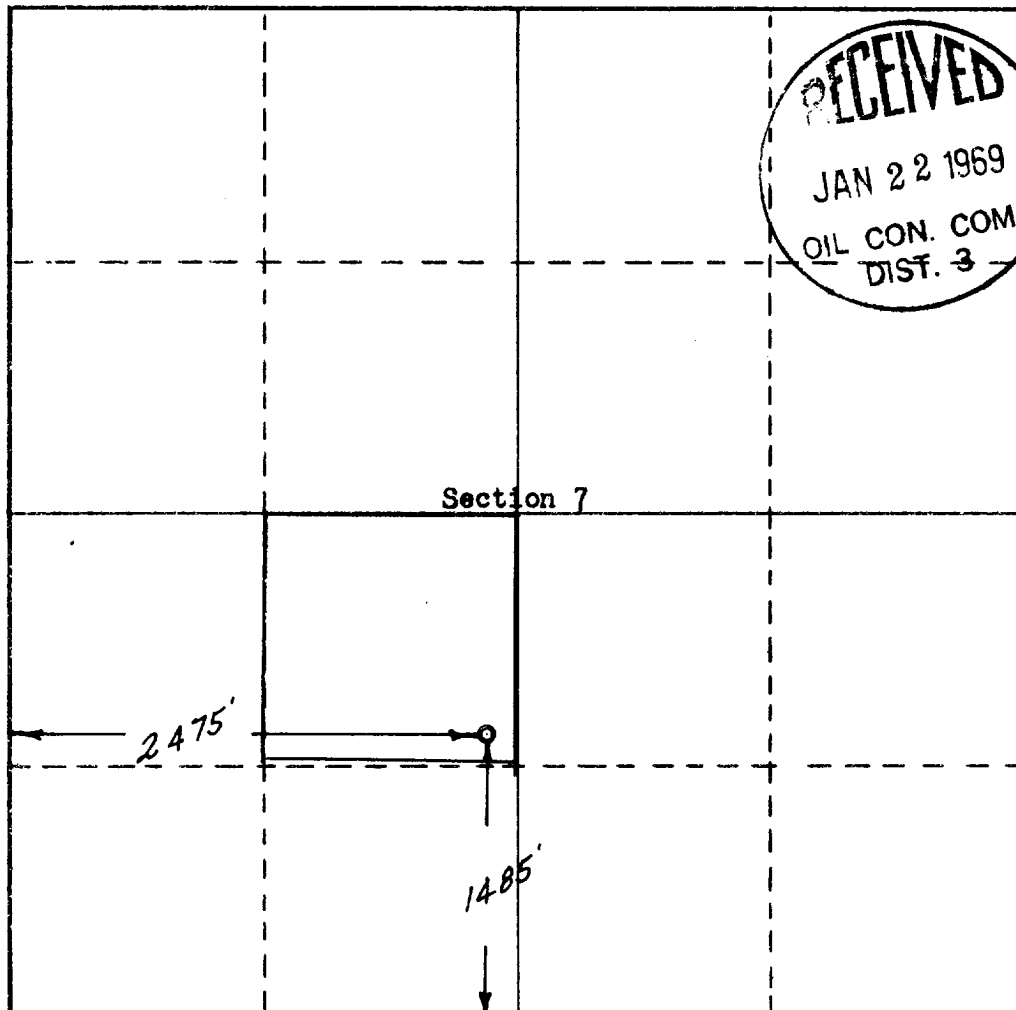
Operator <b>W. C. Imbt</b>			Lease <b>Navajo 7</b>		Well No. <b>3</b>
Unit Letter <b>K</b>	Section <b>7</b>	Township <b>29 North</b>	Range <b>16 West</b>	County <b>San Juan</b>	
Actual Footage Location of Well: <b>1485</b> feet from the <b>South</b> line and <b>2475</b> feet from the <b>West</b> line					
Ground Level Elev: <b>5039</b>	Producing Formation <b>Dakota</b>	Pool <b>Hogback</b>	Dedicated Acreage: <b>40</b> Acres		

1. Outline the acreage dedicated to the subject well by colored pencil or hachure marks on the plat below.
2. If more than one lease is dedicated to the well, outline each and identify the ownership thereof (both as to working interest and royalty).
3. If more than one lease of different ownership is dedicated to the well, have the interests of all owners been consolidated by communitization, unitization, force-pooling, etc?

☐ Yes ☐ No If answer is "yes," type of consolidation \_\_\_\_\_

If answer is "no," list the owners and tract descriptions which have actually been consolidated. (Use reverse side of this form if necessary.) \_\_\_\_\_

No allowable will be assigned to the well until all interests have been consolidated (by communitization, unitization, forced-pooling, or otherwise) or until a non-standard unit, eliminating such interests, has been approved by the Commission.



CERTIFICATION

I hereby certify that the information contained herein is true and complete to the best of my knowledge and belief.

Name **ORIGINAL SIGNED BY W. C. IMBT**

Position *Operator*

Company

Date **1-27-69**

**RECEIVED**

I hereby certify that the well location shown on this plat was located from field notes of actual surveys made by me or under my supervision, and that the same is true and correct to the best of my knowledge and belief.

Date Surveyed **January 17, 1969**

Registered Professional Engineer and Land Surveyor

Certificate No. **7081**