

NEW MEXICO OIL CONSERVATION COMMISSION
WELL LOCATION AND ACERAGE DEDICATION PLAT

All distances must be from the outer boundaries of the Section

Operator The SHIPROCK CORPORATION			Lease Navajo 17-G		U. S. GEOLOGICAL SURVEY FARMINGTON
Unit Letter G	Section 17	Township 29 NORTH	Range 18 WEST	County SAN JUAN	
Actual Footage Location of Well: 2361 feet from the NORTH line and 1660 feet from the EAST line					
Ground Level Elev. 5204.0	Producing Formation Gallup		Pool Shiprock Gallup	Dedicated Acreage: 40 Joint Acres	

1. Outline the acreage dedicated to the subject well by colored pencil or hachure marks on the plat below.
2. If more than one lease is dedicated to the well, outline each and identify the ownership thereof (as to working interest and royalty).
3. If more than one lease of different ownership is dedicated to the well, have the interests of all owners been consolidated by communitization, unitization, force-pooling, etc?

() Yes () No If answer is "yes," type of consolidation

If answer is "no," list the owners and tract descriptions which have actually consolidated. (Use reverse side of this form if necessary.)

No allowable will be assigned to the well until all interests have been consolidated (by communitization, unitization, forced-pooling, or otherwise) or until a non standard unit, eliminating such interests, has been approved by the Commission.

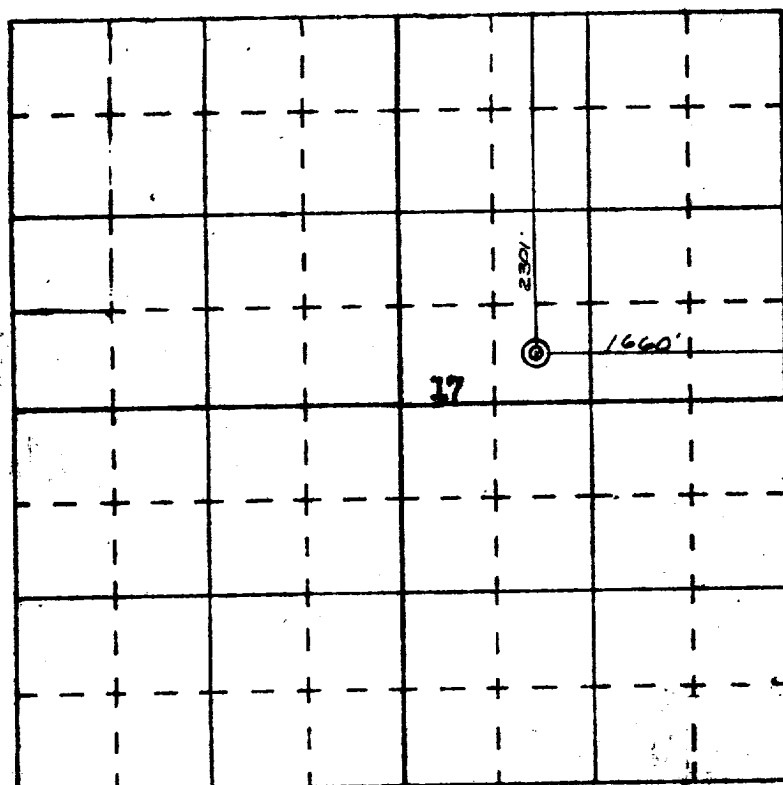
CERTIFICATION

I hereby certify that the information contained herein is true and complete to the best of my knowledge and belief.

Name *L. F. Shugart*
 Position *Pres. Buft.*
 Company *Shiprock Corp.*
 Date *8/16/69*

I hereby certify that the well location shown on this plat was plotted from field notes of actual surveys made by me or under my supervision, and that the same is true and correct to the best of my knowledge and belief.

4 August 1969
 Date Surveyed
 Registered Professional Engineer
 and/or Land Surveyor
1448
 Certificate No. **1448**



SCALE—4 INCHES EQUALS 1 MILE

SAN JUAN ENGINEERING COMPANY, FARMINGTON, N. M.