



LTR



Job separation sheet

UNITED STATES
DEPARTMENT OF THE INTERIOR
GEOLOGICAL SURVEY

APPLICATION FOR PERMIT TO DRILL, DEEPEN, OR PLUG BACK

1a. TYPE OF WORK

DRILL ☒DEEPEN ☐PLUG BACK ☐

b. TYPE OF WELL

OIL
WELL ☒GAS
WELL ☐

OTHER

SINGLE
ZONE ☐MULTIPLE
ZONE ☐

2. NAME OF OPERATOR

W. C. Imbt

3. ADDRESS OF OPERATOR

210 West 38th Street, Farmington, New Mexico - 87401

4. LOCATION OF WELL (Report location clearly and in accordance with any State requirements.*)

At surface

2475' FNL & 2475' FNL

At proposed prod. zone

14. DISTANCE IN MILES AND DIRECTION FROM NEAREST TOWN OR POST OFFICE*

7 1/2 miles east of Shiprock, New Mexico

15. DISTANCE FROM PROPOSED*

LOCATION TO NEAREST
PROPERTY OR LEASE LINE, FT.
(Also to nearest drlg. unit line, if any)

18. DISTANCE FROM PROPOSED LOCATION*

TO NEAREST WELL, DRILLING, COMPLETED,
OR APPLIED FOR, ON THIS LEASE, FT.

330'

16. NO. OF ACRES IN LEASE

4800

19. PROPOSED DEPTH

850'

17. NO. OF ACRES ASSIGNED
TO THIS WELL

40

20. ROTARY OR CABLE TOOLS

Both

21. ELEVATIONS (Show whether DF, RT, GR, etc.)

5170' Gr.

22. APPROX. DATE WORK WILL START*

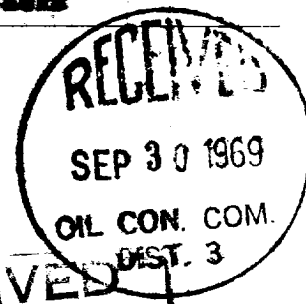
October 1, 1969

23.

PROPOSED CASING AND CEMENTING PROGRAM

SIZE OF HOLE	SIZE OF CASING	WEIGHT PER FOOT	SETTING DEPTH	QUANTITY OF CEMENT
9"	7"	20#	70'	10 Sacks
5-5/8"	4-1/2"	9.5#	835'	35 Sacks

1. Will drill surface hole with cable tools.
2. Set 7" casing through surface sand and boulders.
3. Cement with 10 sacks.
4. Drill out below surface pipe with rotary.
5. Cement 4-1/2" production string in top Dakota.
6. Drill pay with air - run 2-3/8" tubing.
7. Complete open hole, turn into tanks.



RECEIVED

SEP 29 1969

U. S. GEOLOGICAL SURVEY
FARMINGTON, N. M.

IN ABOVE SPACE DESCRIBE PROPOSED PROGRAM: If proposal is to deepen or plug back, give data on present productive zone and proposed new productive zone. If proposal is to drill or deepen directionally, give pertinent data on subsurface locations and measured and true vertical depths. Give blowout preventer program, if any.

24. ORIGINAL SIGNED BY W. C. Imbt TITLE Operator DATE 9-29-69

SIGNED _____ TITLE _____ DATE _____

(This space for Federal or State office use)

PERMIT NO. _____ APPROVAL DATE _____

APPROVED BY 70 TITLE _____ DATE _____

CONDITIONS OF APPROVAL, IF ANY:

NEW MEXICO OIL CONSERVATION COMMISSION
WELL LOCATION AND ACREAGE DEDICATION PLAT

Form C-102
Supersedes C-128
Effective 1-1-65

All distances must be from the outer boundaries of the Section.

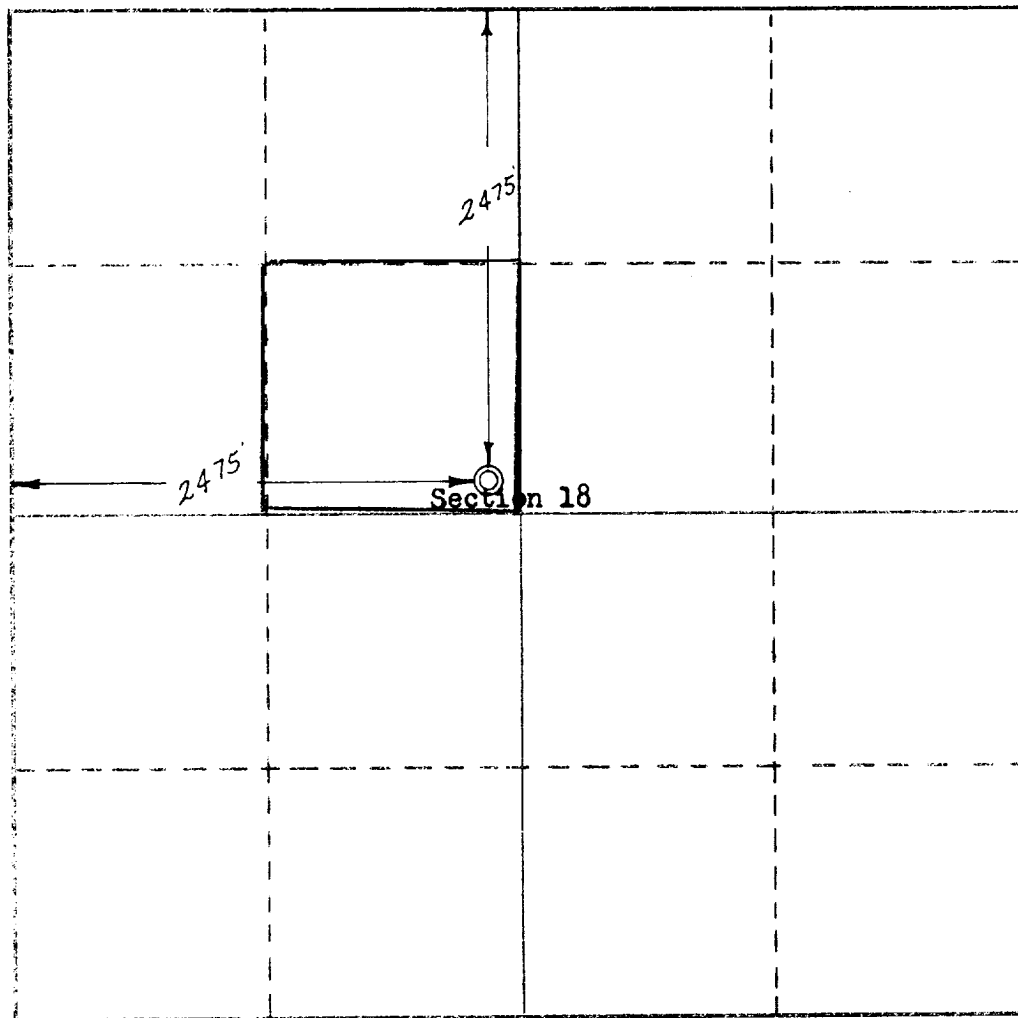
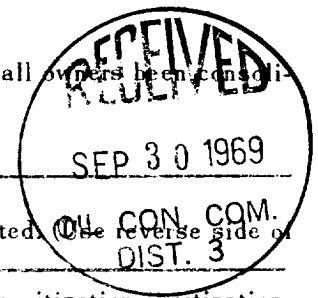
Operator W. C. Imbt		Lease Navajo 18		Well No. 9
Unit Letter F	Section 18	Township 29 North	Range 16 West	County San Juan
Actual Footage Location of Well: 2475 feet from the North line and 2475 feet from the West line				
Ground Level Elev: 5170	Producing Formation Dakota	Pool Hogback	Dedicated Acreage: 40 Acres	

1. Outline the acreage dedicated to the subject well by colored pencil or hachure marks on the plat below.
2. If more than one lease is dedicated to the well, outline each and identify the ownership thereof (both as to working interest and royalty).
3. If more than one lease of different ownership is dedicated to the well, have the interests of all owners been consolidated by communitization, unitization, force-pooling, etc?

☐ Yes ☐ No If answer is "yes," type of consolidation _____

If answer is "no," list the owners and tract descriptions which have actually been consolidated (Use reverse side of this form if necessary.) _____

No allowable will be assigned to the well until all interests have been consolidated (by communitization, unitization, forced-pooling, or otherwise) or until a non-standard unit, eliminating such interests, has been approved by the Commission.



CERTIFICATION

I hereby certify that the information contained herein is true and complete to the best of my knowledge and belief.

ORIGINAL SIGNED BY

Name

W. C. IMBT

Position

Operator

Company

Date

9-26-69

I hereby certify that the well location shown on this plat was plotted from field notes of actual surveys made by me or under my supervision, and that the same is true and correct to the best of my knowledge and belief.

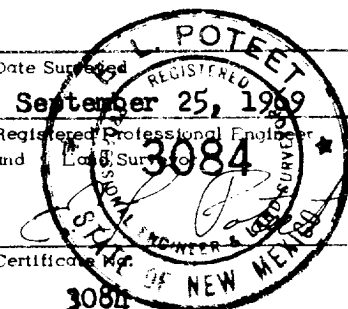
Date Surveyed

September 25, 1969

Registered Professional Engineer and Land Surveyor

Certificate No.

3084



0 500 1000 1500 2000 2500 3000 3500 4000 4500 5000 5500 6000 6500 7000 7500 8000 8500 9000 9500 10000