

NEW MEXICO OIL CONSERVATION COMMISSION

WELL LOCATION AND ACERAGE DEDICATION PLAT

All distances must be from the outer boundaries of the Section

Operator THE SHEPROCK CORPORATION			Lease NAVAJO 17-F		Well No. # 71
Unit Letter F	Section 17	Township 29 NORTH	Range 18 WEST	County SAN JUAN	
Actual Footage Location of Well: <div style="display: flex; justify-content: space-between;"> 2310 feet from the NORTH line and 2615 feet from the WEST line </div>					
Ground Level Elev. 5216.5	Producing Formation Gallup	Pool Shiprock Gallup 40 Tract		Dedicated Acreage Acres	

1. Outline the acreage dedicated to the subject well by colored pencil or hatchure marks on the plat below.
2. If more than one lease is dedicated to the well, outline each and identify the ownership thereof (both as to working interest and royalty).
3. If more than one lease of different ownership is dedicated to the well, have the interests of all owners been consolidated by communitization, unitization, force-pooling, etc?

() Yes () No If answer is "yes," type of consolidation unitization

If answer is "no," list the owners and tract descriptions which have actually consolidated. (Use reverse side of this form if necessary.) NOV 8 1969

No allowable will be assigned to the well until all interests have been consolidated (by communitization, unitization, forced-pooling, or otherwise) or until a non standard unit, eliminating such interests, has been approved by the Commission.

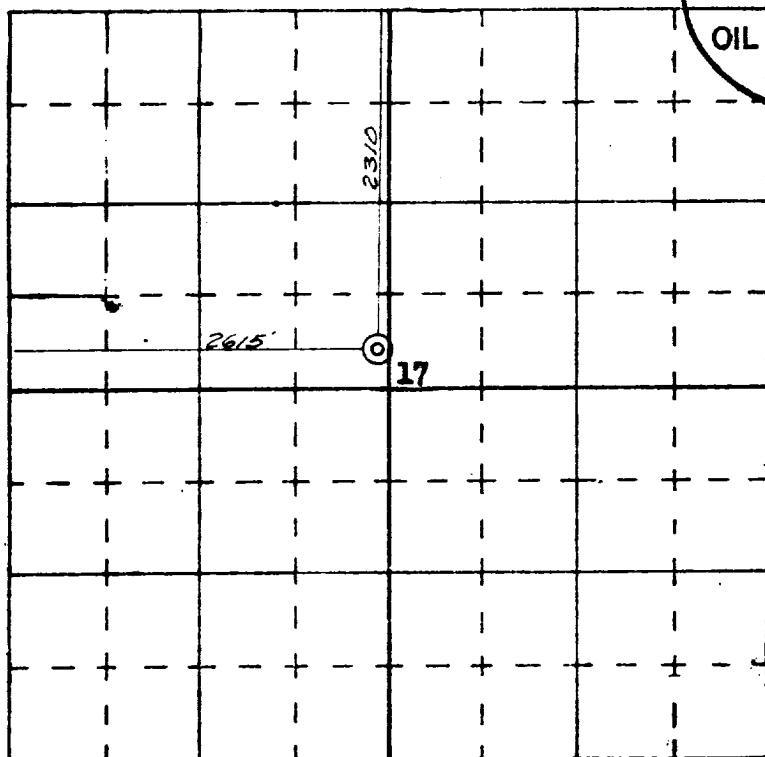
CERTIFICATION

I hereby certify that the information contained herein is true and complete to the best of my knowledge and belief.

Name W. F. Stanger
 Position Prod. Supt.
 Company Shiprock Corp
 Date 11-4-69

I hereby certify that the well location shown on this plat was plotted from field notes of actual surveys made by me or under my supervision, and that the same is true and correct to the best of my knowledge and belief.

James P. Leese
 Registered Professional Engineer
 and/or Land Surveyor **James P. Leese**



N

SCALE—4 INCHES EQUALS 1 MILE