

UNITED STATES  
DEPARTMENT OF THE INTERIOR  
GEOLOGICAL SURVEY

## APPLICATION FOR PERMIT TO DRILL, DEEPEN, OR PLUG BACK

## 1a. TYPE OF WORK

DRILL ☒DEEPEN ☐PLUG BACK ☐

## b. TYPE OF WELL

OIL  
WELL ☒GAS  
WELL ☐

OTHER

SINGLE  
ZONE ☐MULTIPLE  
ZONE ☐

## 2. NAME OF OPERATOR

Eastern Petroleum Company

## 3. ADDRESS OF OPERATOR

P. O. Box 291, Carmi, Illinois 62821

## 4. LOCATION OF WELL (Report location clearly and in accordance with any State requirements.)\*

At surface

2288' FNL; 1846' FEL

At proposed prod. zone

Same

## 14. DISTANCE IN MILES AND DIRECTION FROM NEAREST TOWN OR POST OFFICE\*

5 miles west of Shiprock, New Mexico

## 15. DISTANCE FROM PROPOSED\*

LOCATION TO NEAREST

PROPERTY OR LEASE LINE, FT.

(Also to nearest drlg. unit line, if any)

2114

## 18. DISTANCE FROM PROPOSED LOCATION\*

TO NEAREST WELL, DRILLING, COMPLETED,  
OR APPLIED FOR, ON THIS LEASE, FT.

464

## 16. NO. OF ACRES IN LEASE

4080

## 19. PROPOSED DEPTH

800

17. NO. OF ACRES ASSIGNED  
TO THIS WELL

40\*

## 20. ROTARY OR CABLE TOOLS

Rotary

## 21. ELEVATIONS (Show whether DF, RT, GR, etc.)

5272 Gr

## 22. APPROX. DATE WORK WILL START\*

Feb. 26, 1970

## 23.

## PROPOSED CASING AND CEMENTING PROGRAM

SIZE OF HOLE	SIZE OF CASING	WEIGHT PER FOOT	SETTING DEPTH	QUANTITY OF CEMENT
8 3/4	7"	24	18	6 sacks
6 1/4	4 1/2"	9.5	800	10 sacks

Propose to drill and test Dakota sandstone.  
If productive, will set and cement 4 1/2" casing.

RECEIVED

JAN 26 1970

U. S. GEOLOGICAL SURVEY

\*This is the same 40 acres previously assigned to producing well #23 Navajo.  
Will not produce over 70 barrels per this 40 acres.

IN ABOVE SPACE DESCRIBE PROPOSED PROGRAM: If proposal is to deepen or plug back, give data on present productive zone and proposed new productive zone. If proposal is to drill or deepen directionally, give pertinent data on subsurface locations and measured and true vertical depths. Give blowout preventer program, if any.

24.

SIGNED

TITLE

Secretary

DATE

January 23, 1970

(This space for Federal or State office use)

PERMIT NO.

APPROVAL DATE

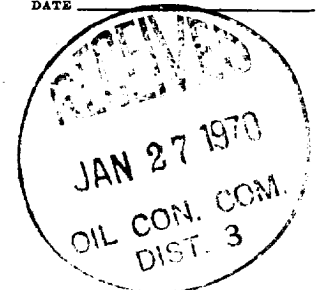
APPROVED BY

TITLE

DATE

CONDITIONS OF APPROVAL, IF ANY:

\*See Instructions On Reverse Side



NEW MEXICO OIL CONSERVATION COMMISSION  
WELL LOCATION AND ACREAGE DEDICATION PLAT

Form C-102  
Supersedes C-128  
Effective 1-1-65

All distances must be from the outer boundaries of the Section.

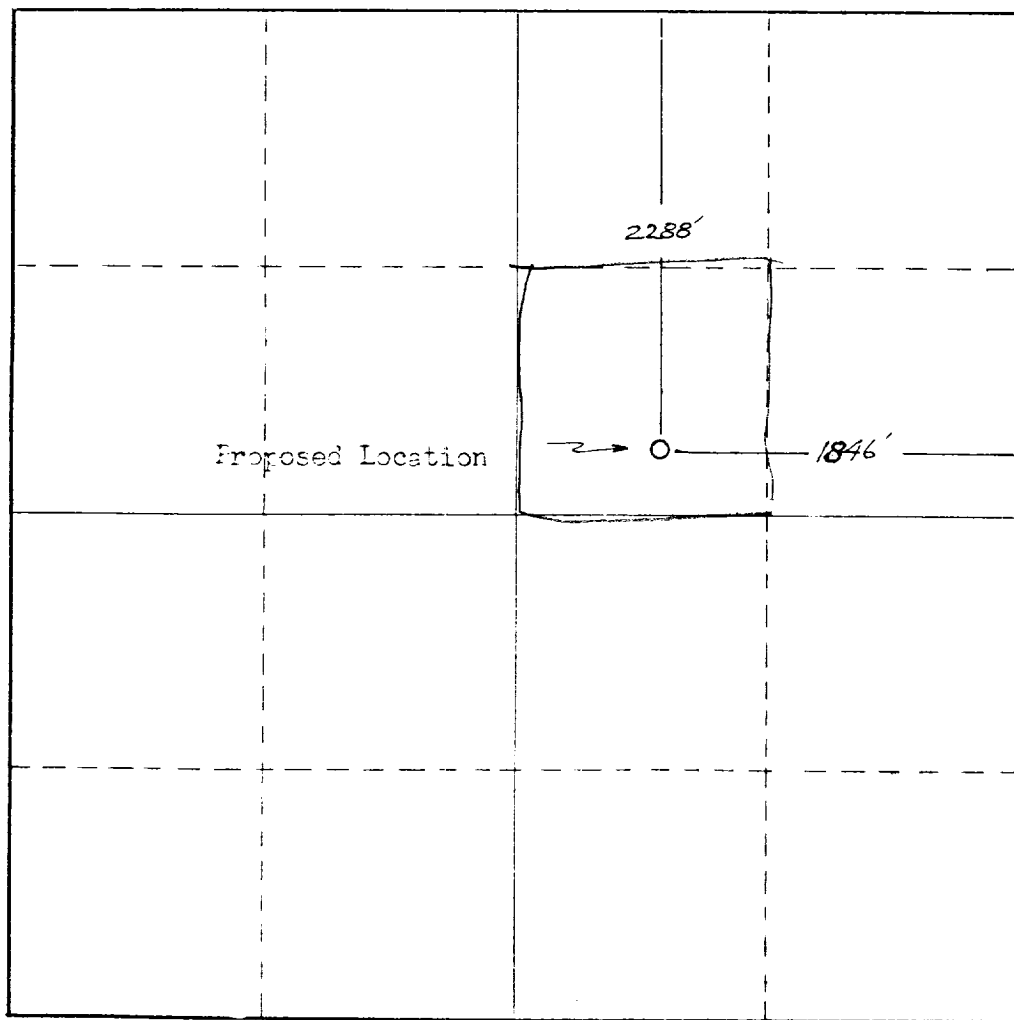
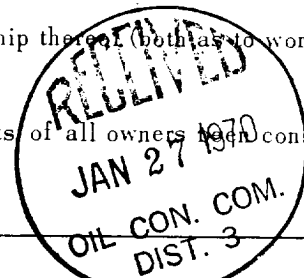
Operator <b>Eastern Petroleum Company</b>			Lease <b>Havajo</b>		Well No. <b>57</b>
Tract Letter <b>G</b>	Section <b>2</b>	Township <b>29 N</b>	Range <b>19 W</b>	County <b>San Juan</b>	
Approximate Location of Well: <b>2288</b> feet from the <b>North</b> line and <b>1846</b> feet from the <b>East</b> line					
Ground Level Elev. <b>5272</b>	Producing Formation		Pool	Dedicated Acreage: <b>40</b> Acres	

1. Outline the acreage dedicated to the subject well by colored pencil or hachure marks on the plat below.
2. If more than one lease is dedicated to the well, outline each and identify the ownership thereof (both as to working interest and royalty).
3. If more than one lease of different ownership is dedicated to the well, have the interests of all owners been consolidated by communitization, unitization, force-pooling, etc?

☐ Yes ☐ No If answer is "yes," type of consolidation \_\_\_\_\_

If answer is "no," list the owners and tract descriptions which have actually been consolidated. (Use reverse side of this form if necessary.) \_\_\_\_\_

No allowable will be assigned to the well until all interests have been consolidated (by communitization, unitization, forced-pooling, or otherwise) or until a non-standard unit, eliminating such interests, has been approved by the Commission.



CERTIFICATION

I hereby certify that the information contained herein is true and complete to the best of my knowledge and belief.

Name *J. Edwards*  
Position **Secretary**  
Company **Eastern Petroleum Company**  
Date **January 23, 1970**

I hereby certify that the well location shown on this plat was plotted from field notes of actual surveys made by me or under my supervision, and that the same is true and correct to the best of my knowledge and belief.

Date Surveyed **Jan. 7, 1970**  
Registered Professional Engineer and/or Land Surveyor

*Frederick H. Reed*  
Certificate No. **3795**

