

UNITED STATES  
DEPARTMENT OF THE INTERIOR  
GEOLOGICAL SURVEY

## APPLICATION FOR PERMIT TO DRILL, DEEPEN, OR PLUG BACK

1a. TYPE OF WORK DRILL ☒ DEEPEN ☐ PLUG BACK ☐b. TYPE OF WELL  
OIL WELL ☐ GAS WELL ☒ OTHER ☐ SINGLE ZONE ☒ MULTIPLE ZONE ☐

2. NAME OF OPERATOR

Chaparral Oil &amp; Gas Company

3. ADDRESS OF OPERATOR

Box B, Aztec, New Mexico

4. LOCATION OF WELL (Report location clearly and in accordance with any State requirements.)\*  
At surface

At proposed prod. zone 1620 FNL &amp; 790 FWL, Section 34-29N-11W

14. DISTANCE IN MILES AND DIRECTION FROM NEAREST TOWN OR POST OFFICE\*

15. DISTANCE FROM PROPOSED\*  
LOCATION TO NEAREST  
PROPERTY OR LEASE LINE, FT. 1620 FNL & 790 FWL  
(Also to nearest drilg. unit line, if any)18. DISTANCE FROM PROPOSED LOCATION\*  
TO NEAREST WELL, DRILLING, COMPLETED,  
OR APPLIED FOR, ON THIS LEASE, FT.

16. NO. OF ACRES IN LEASE

160

19. PROPOSED DEPTH

1800

17. NO. OF ACRES ASSIGNED  
TO THIS WELL

160

20. ROTARY OR CABLE TOOLS

Rotary

21. ELEVATIONS (Show whether DF, RT, GR, etc.)

5594 Gr

22. APPROX. DATE WORK WELL START\*

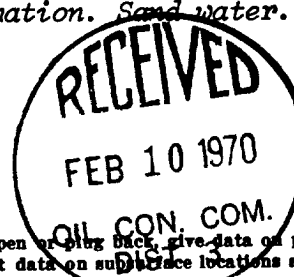
2-10-70

## 23. PROPOSED CASING AND CEMENTING PROGRAM

SIZE OF HOLE	SIZE OF CASING	WEIGHT PER FOOT	SETTING DEPTH	QUANTITY OF CEMENT
12-1/4"	8-5/8"	24.00	90'	100 sxs
6-3/4"	4-1/2"	9.50	1800'	250 sxs

## PROPOSE TO:

Set 8-5/8" surface casing at approximately 90' ~~ent~~ with 100 sxs ~~ent~~.  
Drill 6-3/4" hole to approximately T.D. of 1800' ~~ent~~ thru P.C. Formation.  
Run 4 1/2" casing, cement with 250 sxs.  
Perf Picture Cliff formation. Sand water. Frac with 30,000 sand & water.  
Run 1" Siphon String.  
Put on production.



IN ABOVE SPACE DESCRIBE PROPOSED PROGRAM: If proposal is to deepen or plug back, give data on present productive zone and proposed new productive zone. If proposal is to drill or deepen directionally, give pertinent data on subsurface locations and measured and true vertical depths. Give blowout preventer program, if any.

24.

SIGNED Wayne J. Lunde TITLE PresidentDATE February 10, 1970

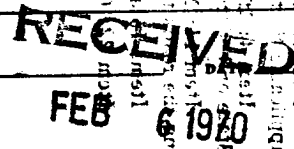
(This space for Federal or State office use)

PERMIT NO. \_\_\_\_\_

APPROVAL DATE \_\_\_\_\_

APPROVED BY \_\_\_\_\_  
CONDITIONS OF APPROVAL, IF ANY:

TITLE \_\_\_\_\_



**NEW MEXICO OIL CONSERVATION COMMISSION  
WELL LOCATION AND ACREAGE DEDICATION PLAT**

Form C-102  
Supersedes C-128  
Effective 1-1-65

All distances must be from the outer boundaries of the Section.

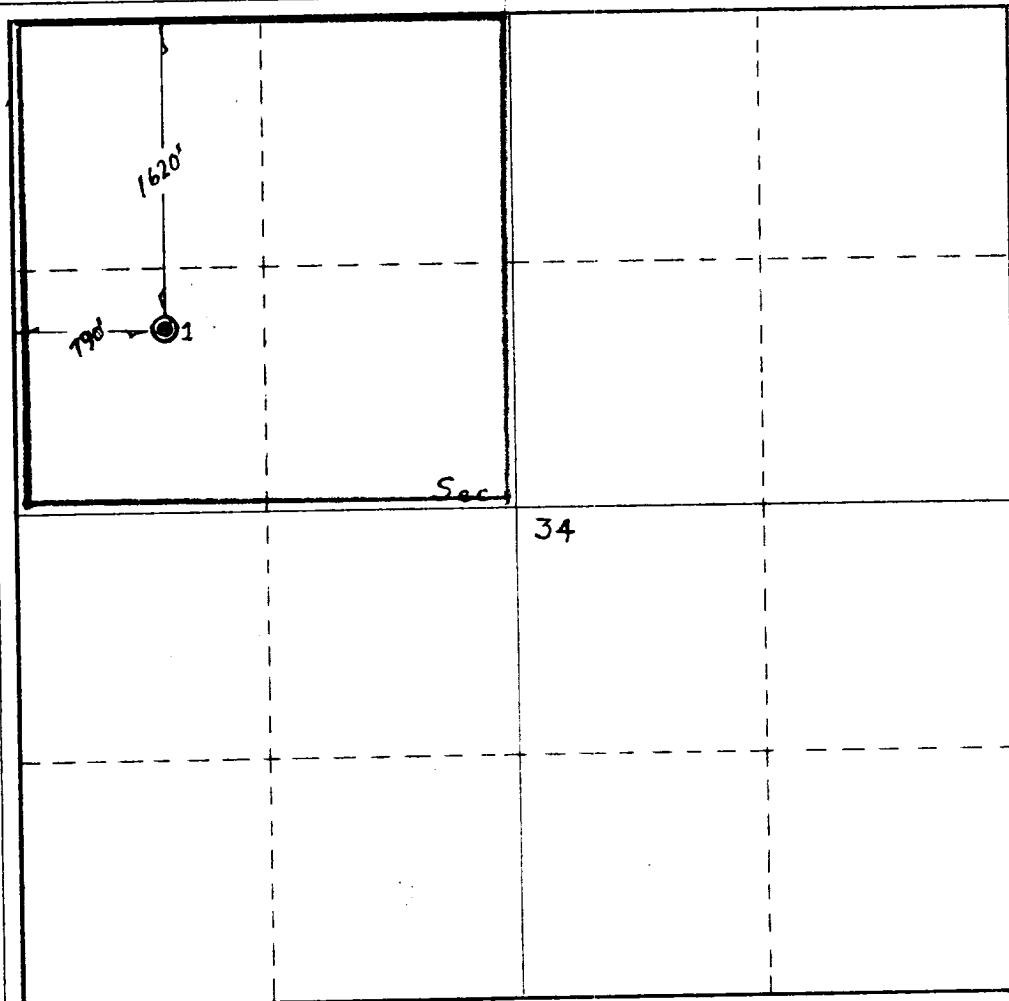
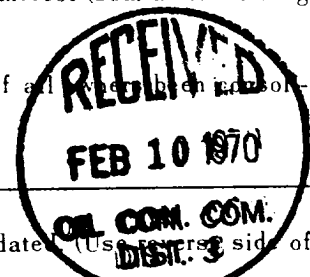
Operator <b>Chaparral Oil &amp; Gas Co.</b>			Lease <b>Chaparral</b> <del>211220</del>		Well No. <b>1</b>
Unit Letter <b>E</b>	Section <b>34</b>	Township <b>29N</b>	Range <b>11W</b>	County <b>San Juan</b>	
Actual Footage Location of Well: <b>1620</b> feet from the <b>North</b> line and <b>790</b> feet from the <b>West</b> line					
Ground Level Elev. <b>5594</b>	Producing Formation <b>Pictured Cliffs</b>		Pool		Dedicated Acreage: <b>260 1/158</b> Acres

1. Outline the acreage dedicated to the subject well by colored pencil or hachure marks on the plat below.
2. If more than one lease is dedicated to the well, outline each and identify the ownership thereof (both as to working interest and royalty).
3. If more than one lease of different ownership is dedicated to the well, have the interests of all leases been consolidated by communitization, unitization, force-pooling, etc?

☐ Yes    ☐ No    If answer is "yes," type of consolidation \_\_\_\_\_

If answer is "no," list the owners and tract descriptions which have actually been consolidated (Use reverse side of this form if necessary.) \_\_\_\_\_

No allowable will be assigned to the well until all interests have been consolidated (by communitization, unitization, forced-pooling, or otherwise) or until a non-standard unit, eliminating such interests, has been approved by the Commission.



**CERTIFICATION**

I hereby certify that the information contained herein is true and complete to the best of my knowledge and belief.

Name \_\_\_\_\_  
Position **President**

Company **Chaparral Oil & Gas**

Date **February 10, 1970**

I hereby certify that the well location shown on this plat was plotted from field notes of actual surveys made by me or under my supervision, and that the same is true and correct to the best of my knowledge and belief.

Date received **January 30, 1970**

Registered Professional Engineer  
and/or Surveyor  
**Fred B. Kerr Jr.**

Certificate No.  
**3950**

