

UNITED STATES
DEPARTMENT OF THE INTERIOR
GEOLOGICAL SURVEY

SUBMIT IN TRIPPLICATE*
(Other instructions on
reverse side)

Form approved.
Budget Bureau No. 4-10111

30-045-20752

6. LEASE DESIGNATION AND SERIAL NO.

SF-047020 B

7. IF INDIAN, ALLOTTEE OR TRIBAL LEASE

7. UNIT AGREEMENT NAME

8. FARM OR LEASE NAME

Lea Ann

9. WELL NO.

#1

10. FIELD AND POOL, OR WELL

Fulcher
Rutz Picture Cliffs EXT

11. SEC., T., R., E., OR S.W. 1/4
AND SURVEY OR AREA

Section 35-29N-11W

12. COUNTY OR PARISH 13. STATE

San Juan

N. M.

1. TYPE OF WORK

DRILL ☒

DEEPEN ☐

PLUG BACK ☐

2. TYPE OF WELL

OIL
WELL ☐

GAS
WELL ☒

OTHER

SINGLE
ZONE ☒

MULTIPLE
ZONE ☐

3. NAME OF OPERATOR

Chaparral Oil & Gas Company

3. ADDRESS OF OPERATOR

P. O. Box B, Aztec, New Mexico

4. LOCATION OF WELL (Report location clearly and in accordance with any State requirements.)*
At surface

1850 FNL & 790 FWL, Section 35-29N-11W

At proposed prod. zone

14. DISTANCE IN MILES AND DIRECTION FROM NEAREST TOWN OR POST OFFICE*

15. DISTANCE FROM PROPOSED*
LOCATION TO NEAREST
PROPERTY OR LEASE LINE, FT.
(Also to nearest drlg. unit line, if any)

16. NO. OF ACRES IN LEASE

158.9

17. NO. OF ACRES ASSIGNED
TO THIS WELL

158.9 Acres

18. DISTANCE FROM PROPOSED LOCATION*
TO NEAREST WELL, DRILLING, COMPLETED,
OR APPLIED FOR, ON THIS LEASE, FT.

19. PROPOSED DEPTH

1885

20. ROTARY OR CABLE TOOL

Rotary

21. ELEVATIONS (Show whether DF, RT, GR, etc.)

5643 Gr

22. APPROX. DATE WORK WILL START

MAR 19 1971

23.

PROPOSED CASING AND CEMENTING PROGRAM

SIZE OF HOLE	SIZE OF CASING	WEIGHT PER FOOT	SETTING DEPTH	QUANTITY OF CEMENT DIST. 3
9-7/8"	7"	23#	100'	100 sxs
6-1/4"	3-1/2"	7.7#	1885'	150 sxs

Propose to:

- (1) Drill 9-7/8" hole to 100', set 7" surface casing with 100 sxs of cement.
- (2) Drill 6-1/4" hole to T.D. of 1885', set 3-1/2" casing with 150 sxs of cement.
- (3) Perforate Pictured Cliffs formation.
- (4) Sand/water frac with 30,000# sand and 30,000 gals water.
- (5) Run 1" tubing and complete.

Acreage Dedication: NW 1/4, Section 35-29N-11W, 158.9 acres

IN ABOVE SPACE DESCRIBE PROPOSED PROGRAM: If proposal is to deepen or plug back, give data on present productive zone and proposed new productive zone. If proposal is to drill or deepen directionally, give pertinent data on subsurface locations and measured and true vertical depths. Give blowout preventer program, if any.

24.

SIGNED

Joe C. Eaves

TITLE Vice President

DATE

March 18, 1971

(This space for Federal or State office use)

PERMIT NO.

APPROVAL DATE

APPROVED BY

lm

TITLE

DATE

REASONS OF APPROVAL, IF ANY:

*See Instructions On Reverse Side

NEW MEXICO OIL CONSERVATION COMMISSION
WELL LOCATION AND ACREAGE DEDICATION PLAT

Form C-102
Supersedes C-128
Effective 1-1-65

All distances must be from the outer boundaries of the Section.

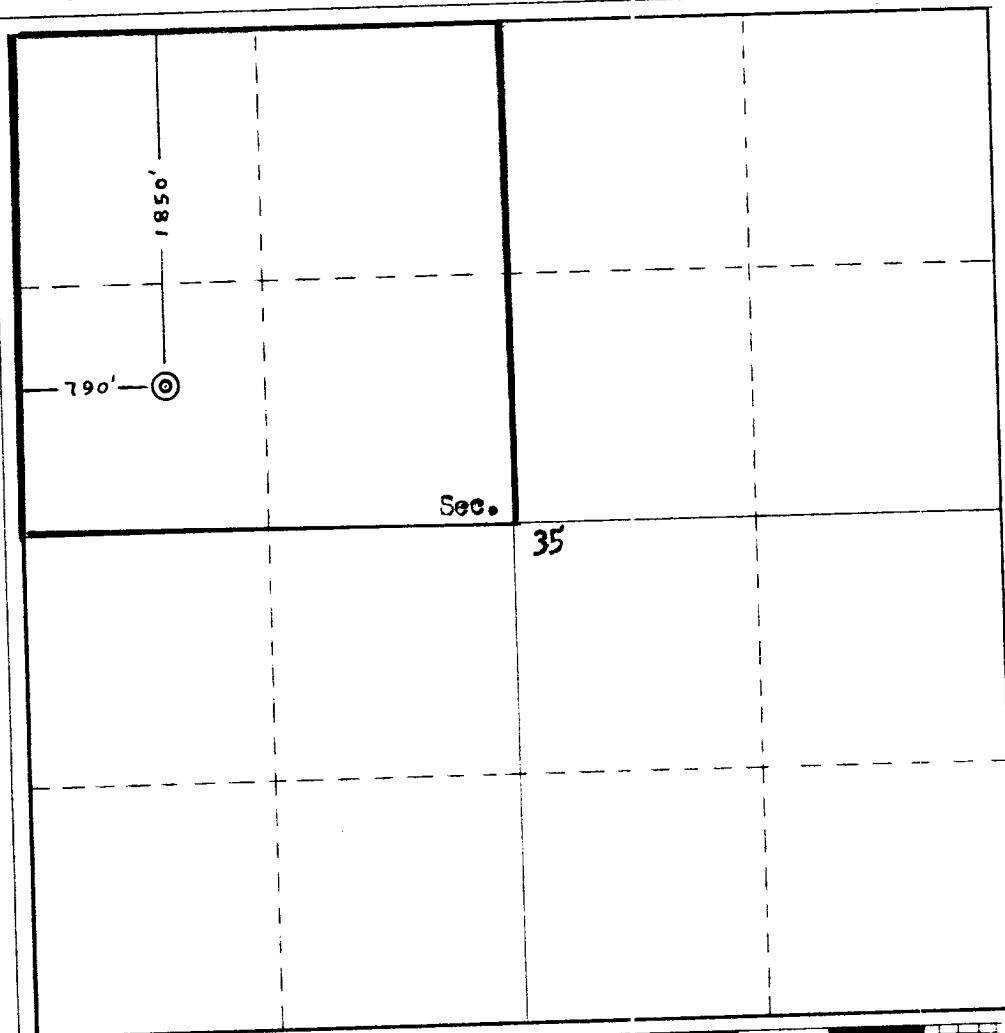
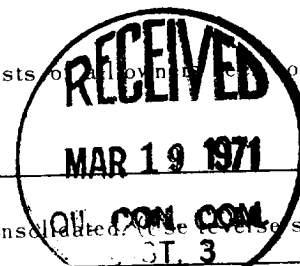
Operator Chaparral Oil & Gas Co.		Lease Lea Ann		Well No. #2 #1
Unit Letter E	Section 35	Township 29N	Range 11W	County San Juan
Actual Footage Location of Well: 1850 feet from the North line and 790 feet from the West line				
Ground Level Elev. 5643	Producing Formation Pictured Cliffs	Pool Fulcher Vulture - 2xt	Dedicated Acreage: 160 Acres	

1. Outline the acreage dedicated to the subject well by colored pencil or hachure marks on the plat below.
2. If more than one lease is dedicated to the well, outline each and identify the ownership thereof (both as to working interest and royalty).
3. If more than one lease of different ownership is dedicated to the well, have the interests of all owners be consolidated by communitization, unitization, force-pooling, etc?

☐ Yes ☐ No If answer is "yes," type of consolidation _____

If answer is "no," list the owners and tract descriptions which have actually been consolidated (by communitization, unitization, force-pooling, or otherwise) or until a non-standard unit, eliminating such interests, has been approved by the Commission. _____

No allowable will be assigned to the well until all interests have been consolidated (by communitization, unitization, force-pooling, or otherwise) or until a non-standard unit, eliminating such interests, has been approved by the Commission.



CERTIFICATION

I hereby certify that the information contained herein is true and complete to the best of my knowledge and belief.

Joe C. Faves
Name

Joe C. Faves
Position

Vice President
Company

Chaparral Oil & Gas
Date

March 18, 1971

I hereby certify that the well location shown on this plat was plotted from field notes of actual surveys made by me or under my supervision, and that the same is true and correct to the best of my knowledge and belief.

Date Received **March 18, 1971**
Registered Professional Land Surveyor
Fred E. Kapp Jr.
Fred E. Kapp Jr.
Surveyor

0 330 660 990 1320 1650 1980 2310 2640 2970 3300 3630 3960 4290 4620 4950 5280 5610 5940 6270 6600