

UNITED STATES
DEPARTMENT OF THE INTERIOR
GEOLOGICAL SURVEY

30-045-21276

APPLICATION FOR PERMIT TO DRILL, DEEPEN, OR PLUG BACK

1a. TYPE OF WORK

DRILL ☒DEEPEN ☐PLUG BACK ☐

b. TYPE OF WELL

OIL
WELL ☒GAS
WELL ☐

OTHER

SINGLE
ZONE ☒MULTIPLE
ZONE ☐

2. NAME OF OPERATOR

AMECO PRODUCTION COMPANY

3. ADDRESS OF OPERATOR

501 Airport Drive, Farmington, New Mexico 87401

4. LOCATION OF WELL (Report location clearly and in accordance with any State requirements.)*

At surface

2475' FSL & 660' FSL

At proposed prod. zone

Same

14. DISTANCE IN MILES AND DIRECTION FROM NEAREST TOWN OR POST OFFICE*

9 miles southeast of Shiprock, New Mexico

15. DISTANCE FROM PROPOSED*

LOCATION TO NEAREST
PROPERTY OR LEASE LINE, FT.
(Also to nearest drlg. unit line, if any)

670'

16. NO. OF ACRES IN LEASE

4160

17. NO. OF ACRES ASSIGNED
TO THIS WELL

40 joint

18. DISTANCE FROM PROPOSED LOCATION*
TO NEAREST WELL, DRILLING, COMPLETED,
OR APPLIED FOR, ON THIS LEASE, FT.

350'

19. PROPOSED DEPTH

660'

20. ROTARY OR CABLE TOOLS

Rotary

21. ELEVATIONS (Show whether DF, RT, GR, etc.)

5046' GL est.

22. APPROX. DATE WORK WILL START*

May, 1973

23.

PROPOSED CASING AND CEMENTING PROGRAM

SIZE OF HOLE	SIZE OF CASING	WEIGHT PER FOOT	SETTING DEPTH	QUANTITY OF CEMENT
9-7/8"	7"	20#	80'	75 sz
6-1/8"	5-1/2"	14#	660'	180 sz

Ameco proposes to drill this well with rotary tools and run 5-1/2" casing to top of Dakota, drill Dakota pay sand and complete in open hole.

Copies of Location Plat attached.

Copies of logs will be furnished upon completion, if logged.

Copies of Development Plan attached.

This well in accordance with USCC Order No. R-3296.

RECEIVED

MAY 14 1973

U. S. GEOLOGICAL SURVEY
FARMINGTON, N. M.

IN ABOVE SPACE DESCRIBE PROPOSED PROGRAM: If proposal is to deepen or plug back, give data on present productive zone and proposed new productive zone. If proposal is to drill or deepen directionally, give pertinent data on subsurface locations and measured and true vertical depths. Give blowout preventer program, if any.

24.

SIGNED

TITLE

Area Engineer

DATE

May 11, 1973

(This space for Federal or State office use)

PERMIT NO.

APPROVAL DATE

APPROVED BY

TITLE

DATE

CONDITIONS OF APPROVAL, IF ANY:

*See Instructions On Reverse Side

WELL LOCATION AND DEDICATION PLAT

All distances must be from the outer boundaries of the Section.

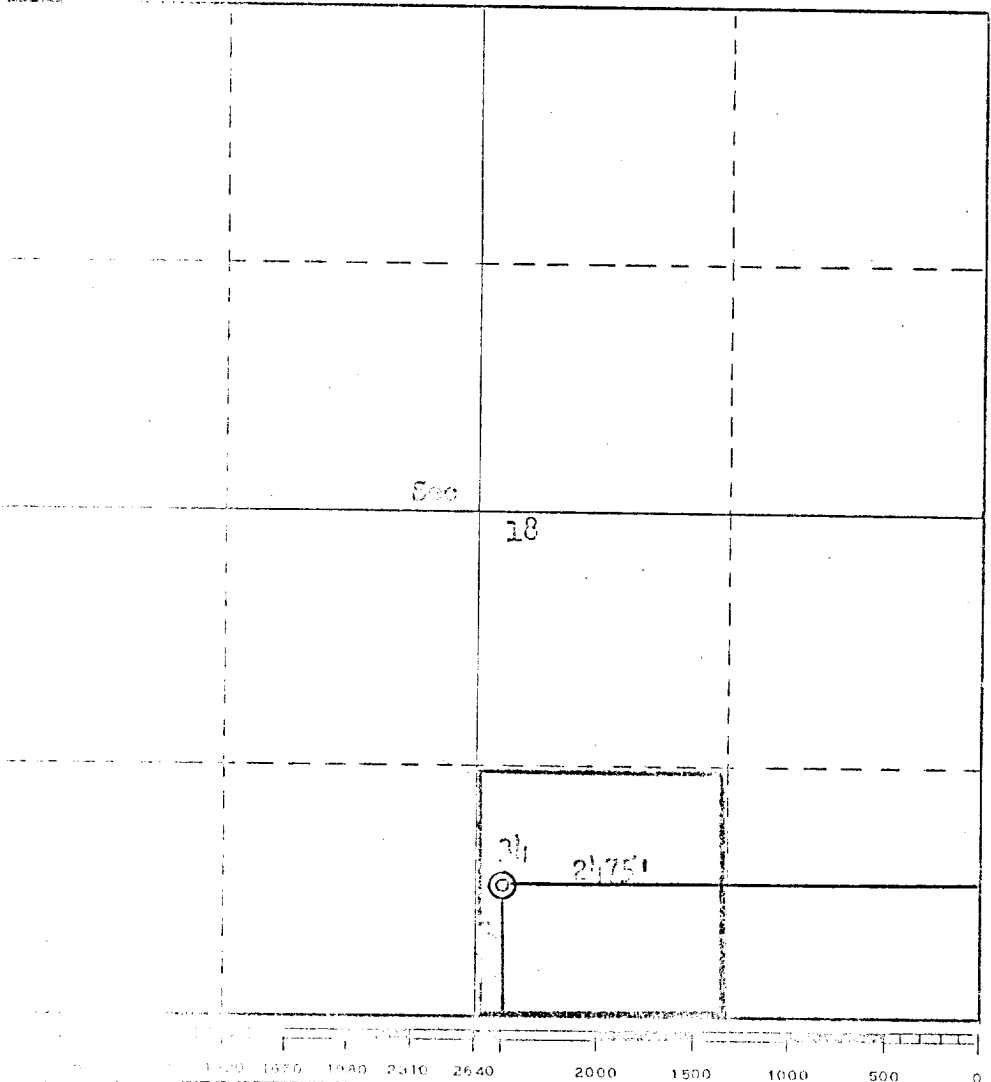
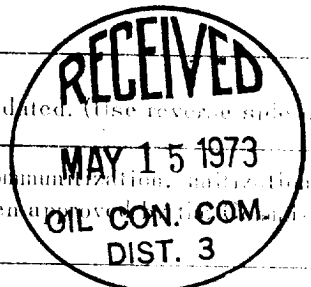
Section 18		Lease		USM Section 18		Well No.	
Township		Range		County			
CDN		10N		San Juan			
Producing Formation		Pool		Dedicated Formation			
Dakota		Hogback Dakota		40			

1. Outline the acreage dedicated to the subject well by colored pencil or hatchure marks on the plat below.
2. If more than one lease is dedicated to the well, outline each and identify the ownership thereof (both as to working interest and royalty).
3. If more than one lease of different ownership is dedicated to the well, have the interests of all owners been consolidated by communitization, unitization, force-pooling, etc?

☐ No If answer is "yes," type of consolidation _____

If answer is "no," list the owners and tract descriptions which have actually been consolidated. (Use reverse side of plat if necessary.) _____

_____ will be assigned to the well until all interests have been consolidated (by communitization, unitization, force-pooling, or otherwise) or until a non-standard unit, eliminating such interests, has been approved by the _____.

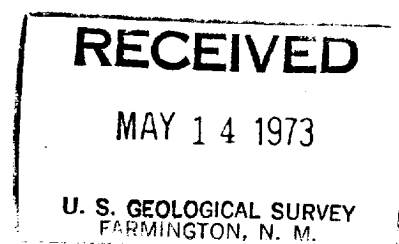


CERTIFICATION	
I hereby certify that the information contained herein is true and complete to the best of my knowledge and belief.	
Name	J. Arnold Snell
Position	Area Engineer
Company	AMOCO PRODUCTION COMPANY
Date	May 11, 1973
I hereby certify that the well location shown on this plat was plotted from field notes of actual surveys made by me or under my supervision, and that the same is true and correct to the best of my knowledge and belief.	
Date Surveyed	May 11, 1973
Regulatory Agency	
Certification	

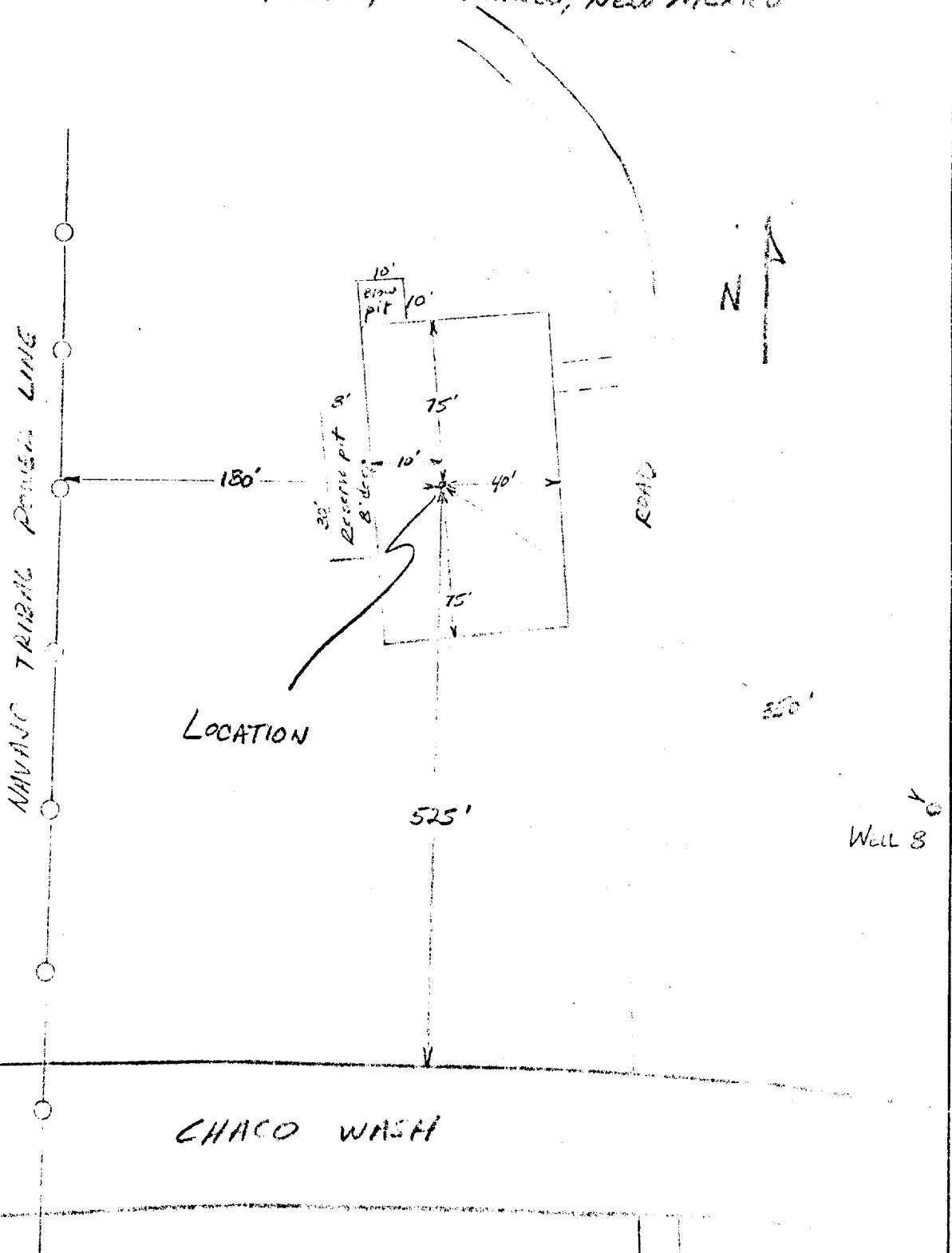
DEVELOPMENT PLAN FOR SURFACE USE
USG SECTION 18 NO. 34

Amoco Production Company proposes to drill the subject well with rotary tools on a graded location as shown on the attachments. The location is in accordance with NMOCC Order R-3296. Well established roads exist in the area and only about 20 feet of new road will be constructed. Archeological sites exist in this region and Archeological clearance will be obtained from the proper authority. Clearance for work will also be obtained from the Navajo Tribal authorities.

No airstrips or field camps exist nearby. The vegetation in the area is extremely sparse. Water for drilling operations will be supplied by hauling from the San Juan River about three miles away. If this water is unuseable, water will be hauled from a different source. Upon completion of the well the location will be cleaned up and the reserve pit backfilled.



DEVELOPMENT FLD
 USG SECTION 18 WELL NO. 34
 HOFFMAN EARTH FLD
 2475' FELX 660' FSL, SECTION 18
 T29N, R16W, SAN JUAN Co, NEW MEXICO

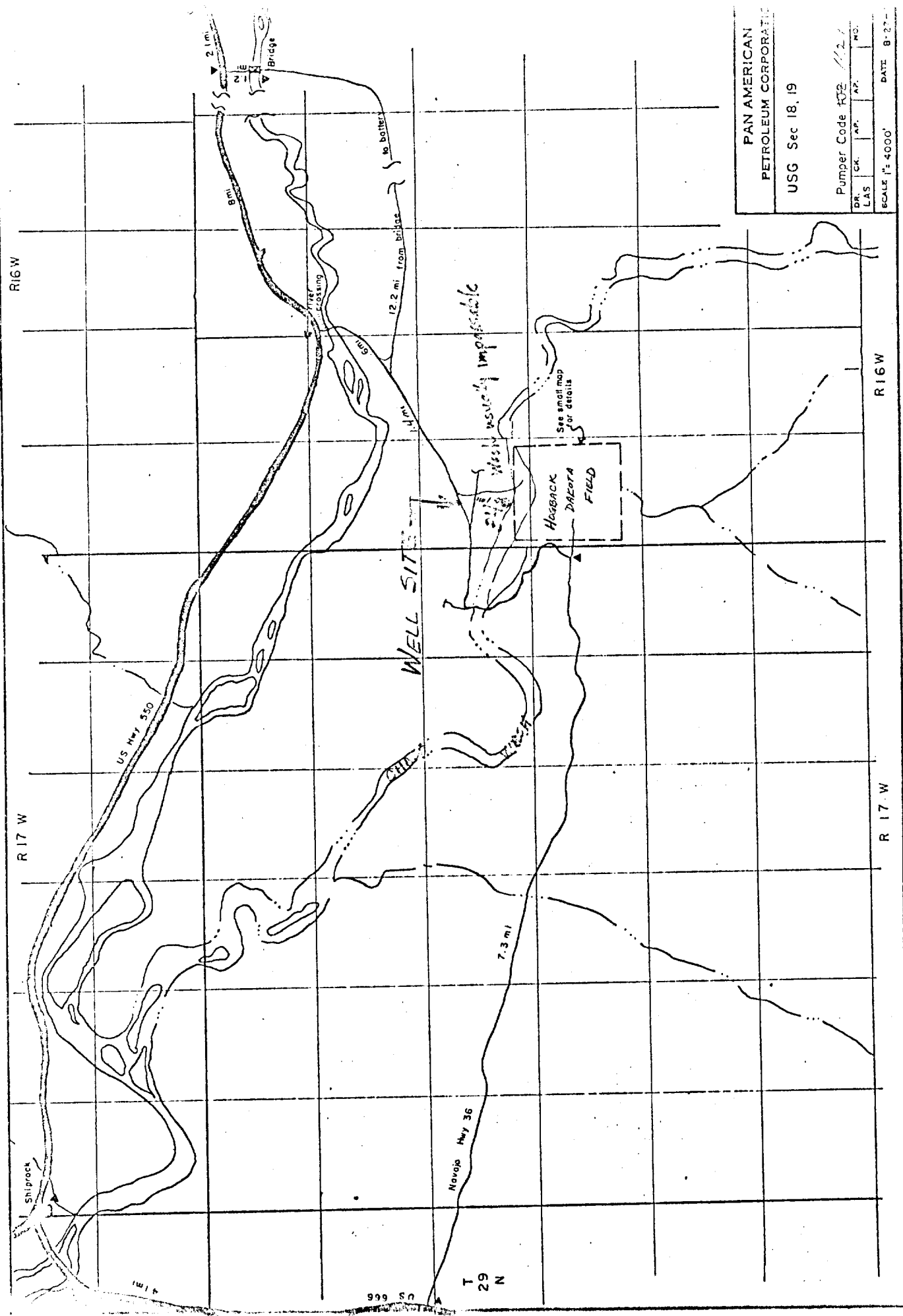


Amoco Production Company

SCALE: 1" = 100'

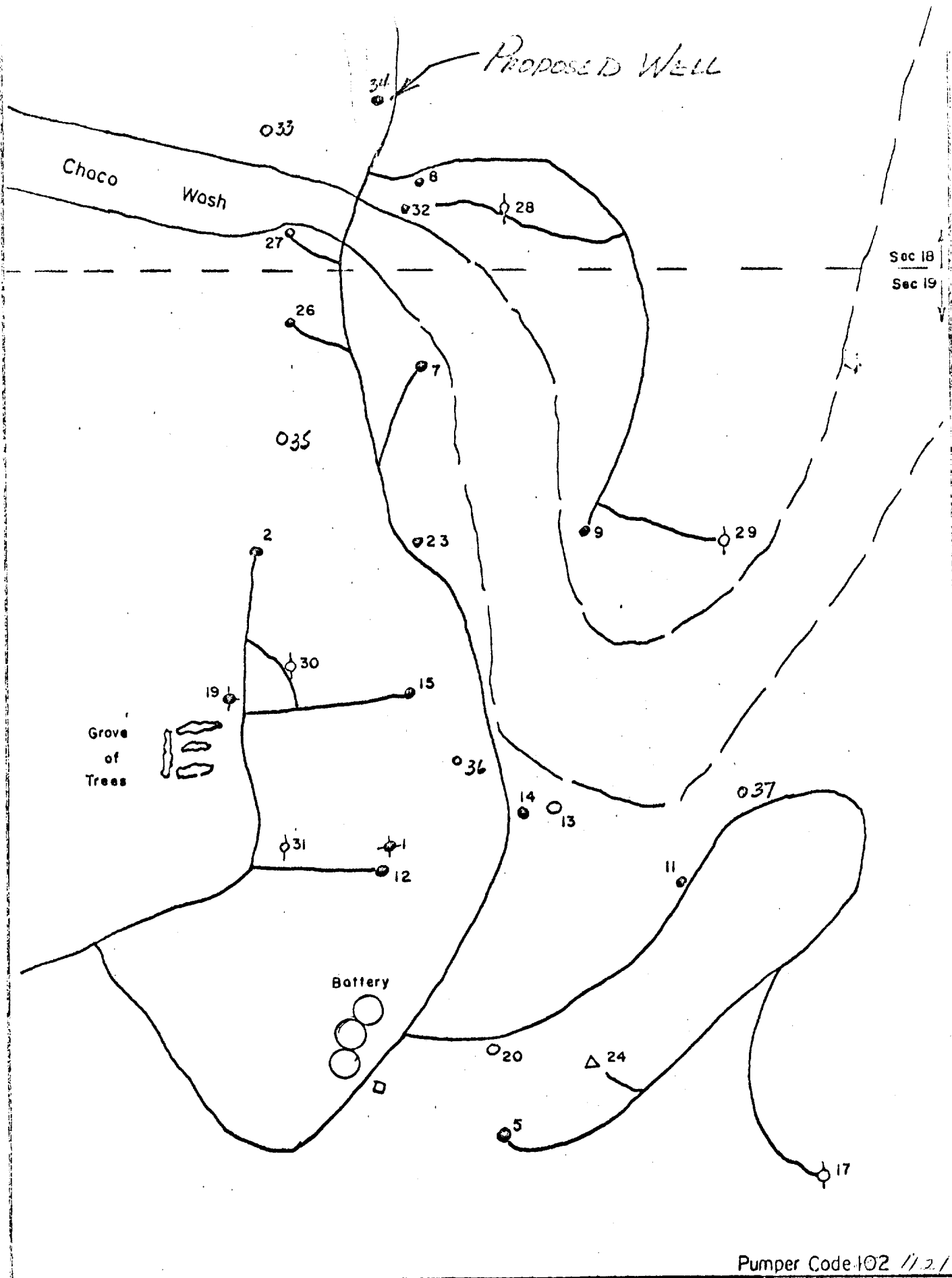
DERLING, LOCATION SPECIFICATION

ORG.
NO.



PAN AMERICAN
PETROLEUM CORPORATION
USG Sec 18, 19
Pumper Code R02 1121
DR. CK. AP. AZ. MO.
LAS SCALE 1" = 4000' DATE 8-27-

Continued from Map



Pumper Code 102 // 2 /

PAN AMERICAN PETROLEUM CORPORATION

SCALE: 1" = 500'

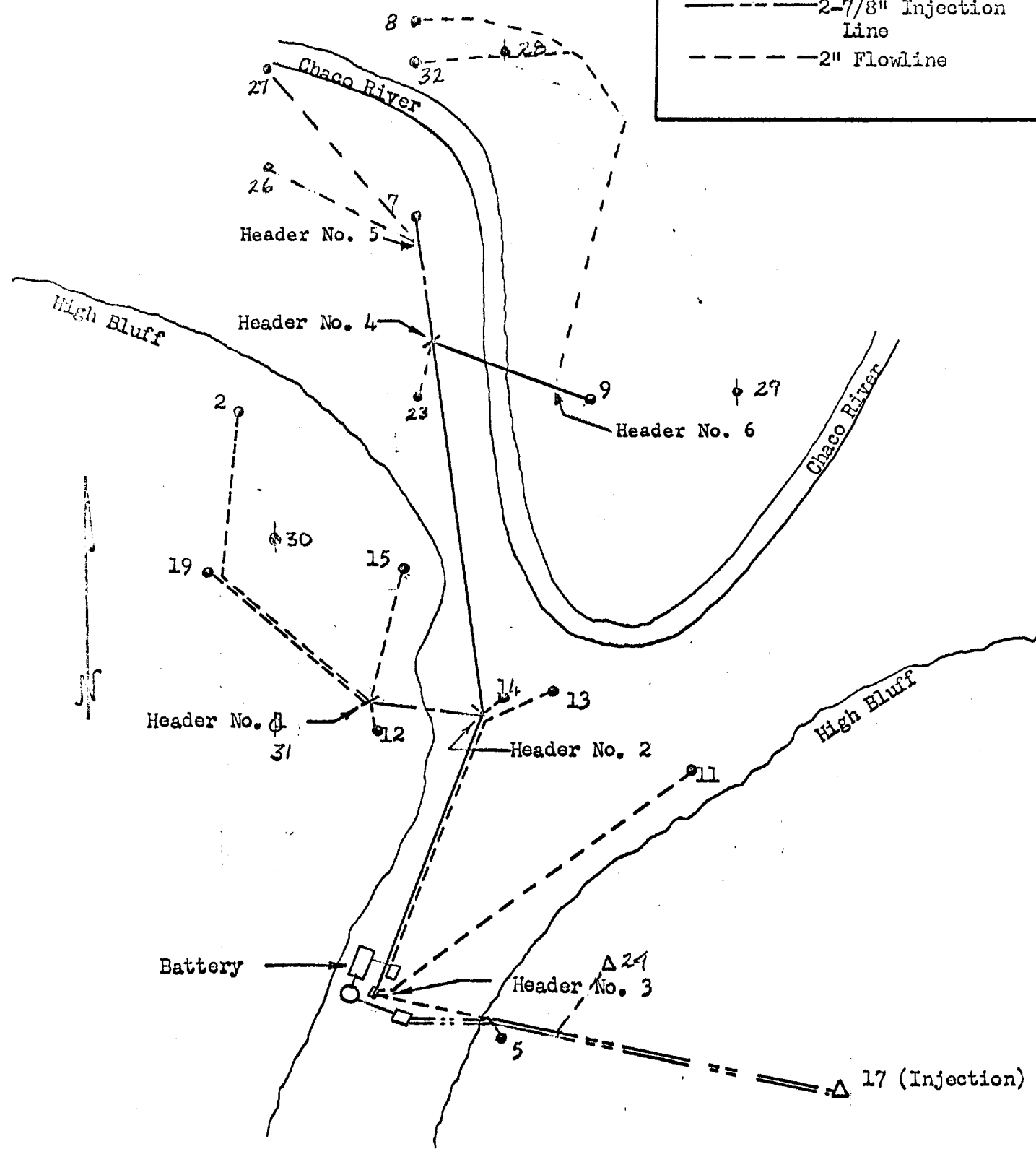
LEASE ROADS
 Cheyenne Dakota Field USG Sec 18 & 19 T29N R16W

from map by LRC

ONG

Proposed
Well → 034

- 4" Production Line & 2" Flowline
- - - - 3" Production Line & 2" Flowline
- - - - 2-7/8" Injection Line
- - - - 2" Flowline



PAN AMERICAN PETROLEUM CORPORATION

HOGBACK DAKOTA FIELD FLOWLINE SYSTEM

SCALE: None

Dwg. No. 1