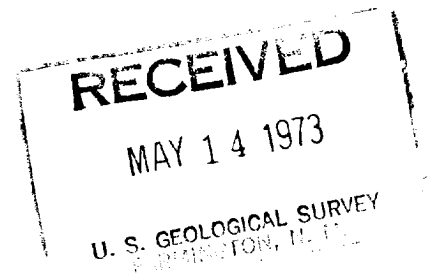


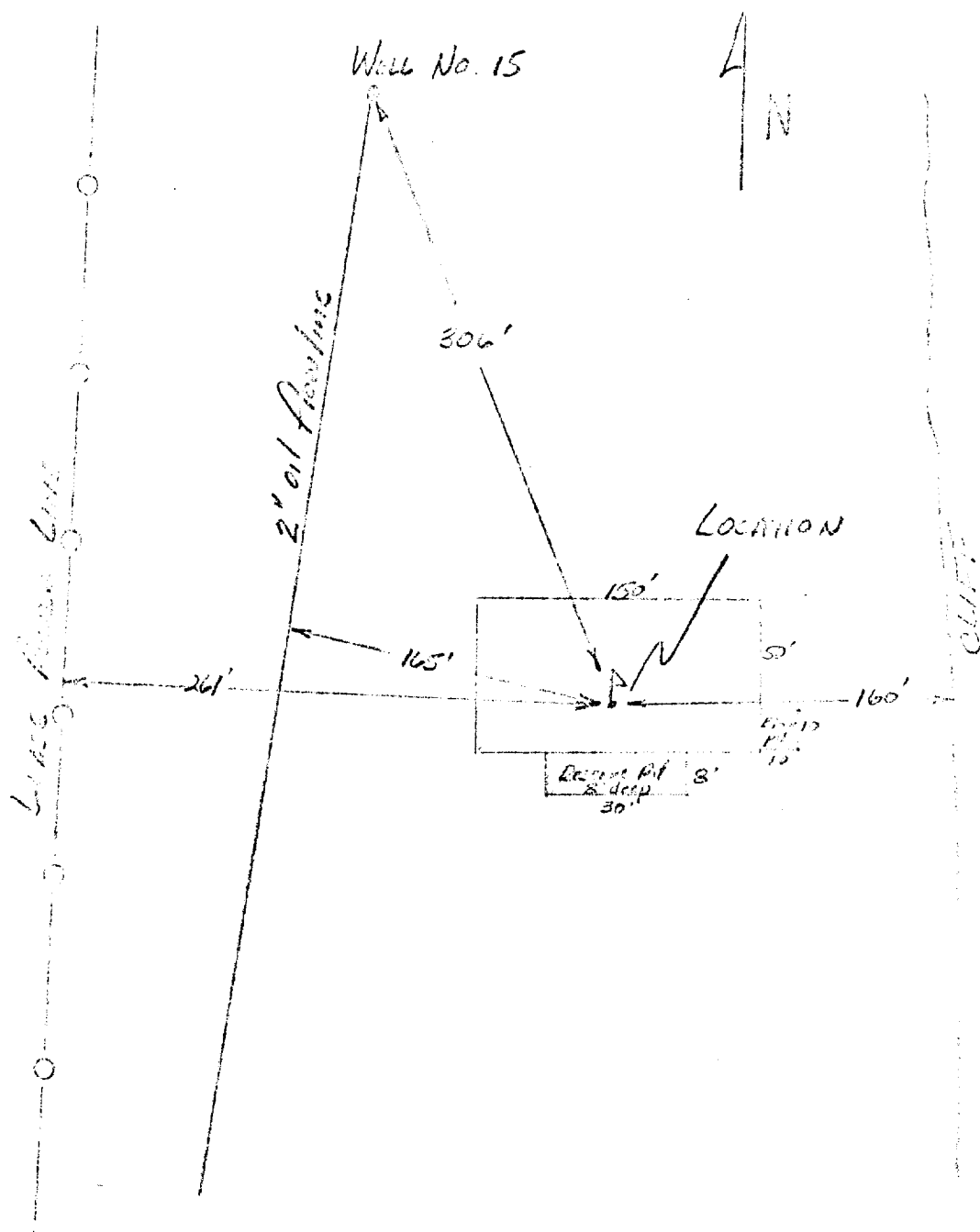
DEVELOPMENT PLAN FOR SURFACE USE  
USG SECTION 19 NO. 36

Amoco Production Company proposes to drill the subject well with rotary tools on a graded location as shown on the attachments. The location is in accordance with NMOCC Order R-3296. Well established roads exist in the area and only about 300 feet of new road will be constructed. Archeological sites exist in this region and Archeological clearance will be obtained from the proper authority. Clearance for work will also be obtained from Navajo Tribal authorities.

No airstrips or field camps exist nearby. The vegetation in the area is extremely sparse. Water for drilling operations will be supplied by hauling from the San Juan River about three miles away. If this water is unuseable, water will be hauled from a different source. Upon completion of the well the location will be cleaned up and the reserve pit backfilled.



DEPARTMENT OF MINES  
 U.S.G. SECTION 19 WELL NO. 36  
 HOOVER LEAD MIN FIELD  
 2210' FOLK 1855 FNL, SECTION 19  
 T24N, R16W, SAN JUAN CO, NEW MEXICO

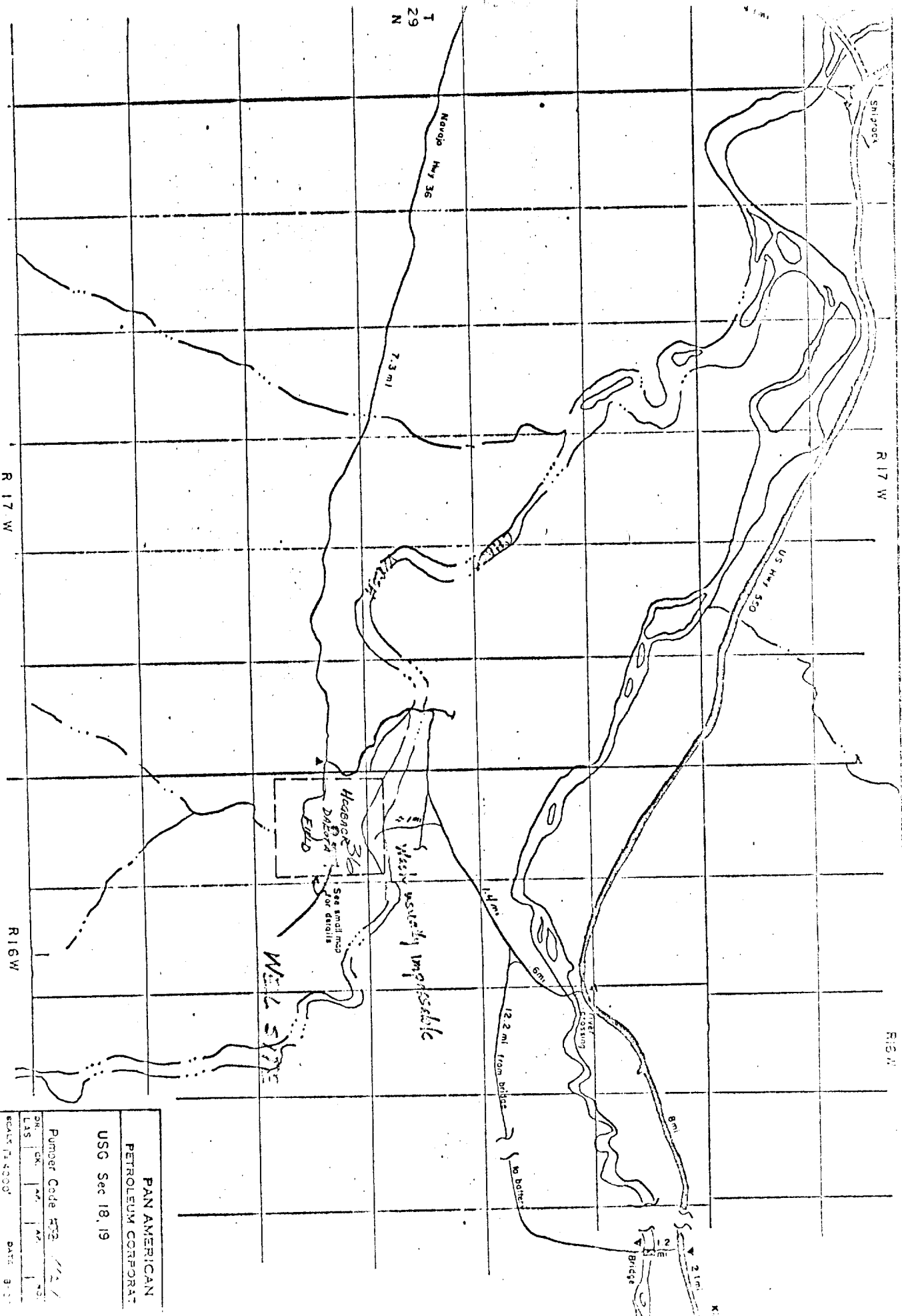


Amoco Production Company

DRILLING LOCATION SPECIFICATION

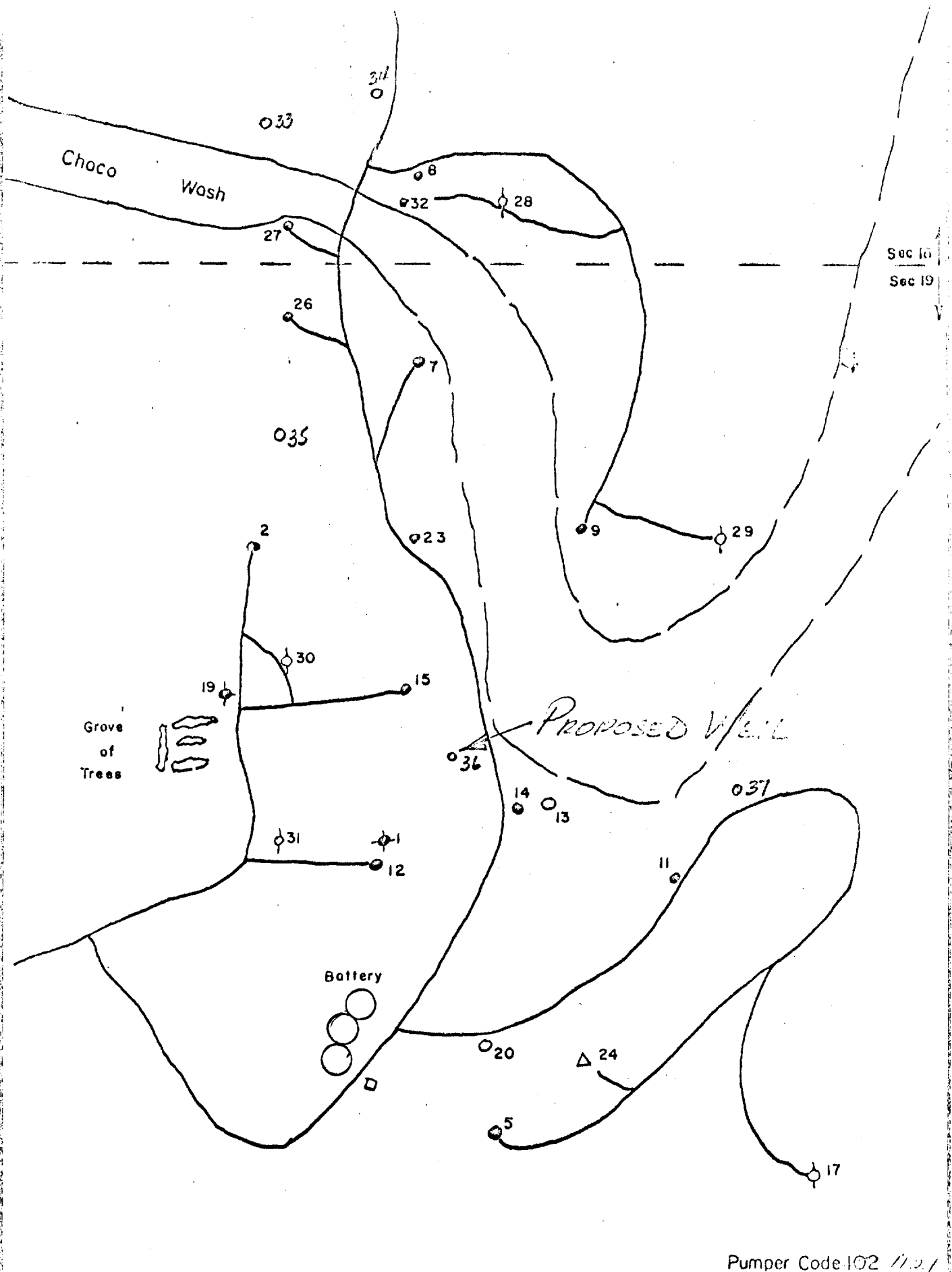
SCALE:

DRG.  
NO.



PAN AMERICAN	
PETROLEUM CORP.	
USG Sec 18.19	
Pumper Code #22	1121
DR. L.A.S.	SK. A.A. A.A. A.A.
Scale 1:4000'	
DATE 3-1	

*Cherokee County Map*



Pumper Code 102 1121

PAN AMERICAN PETROLEUM CORPORATION

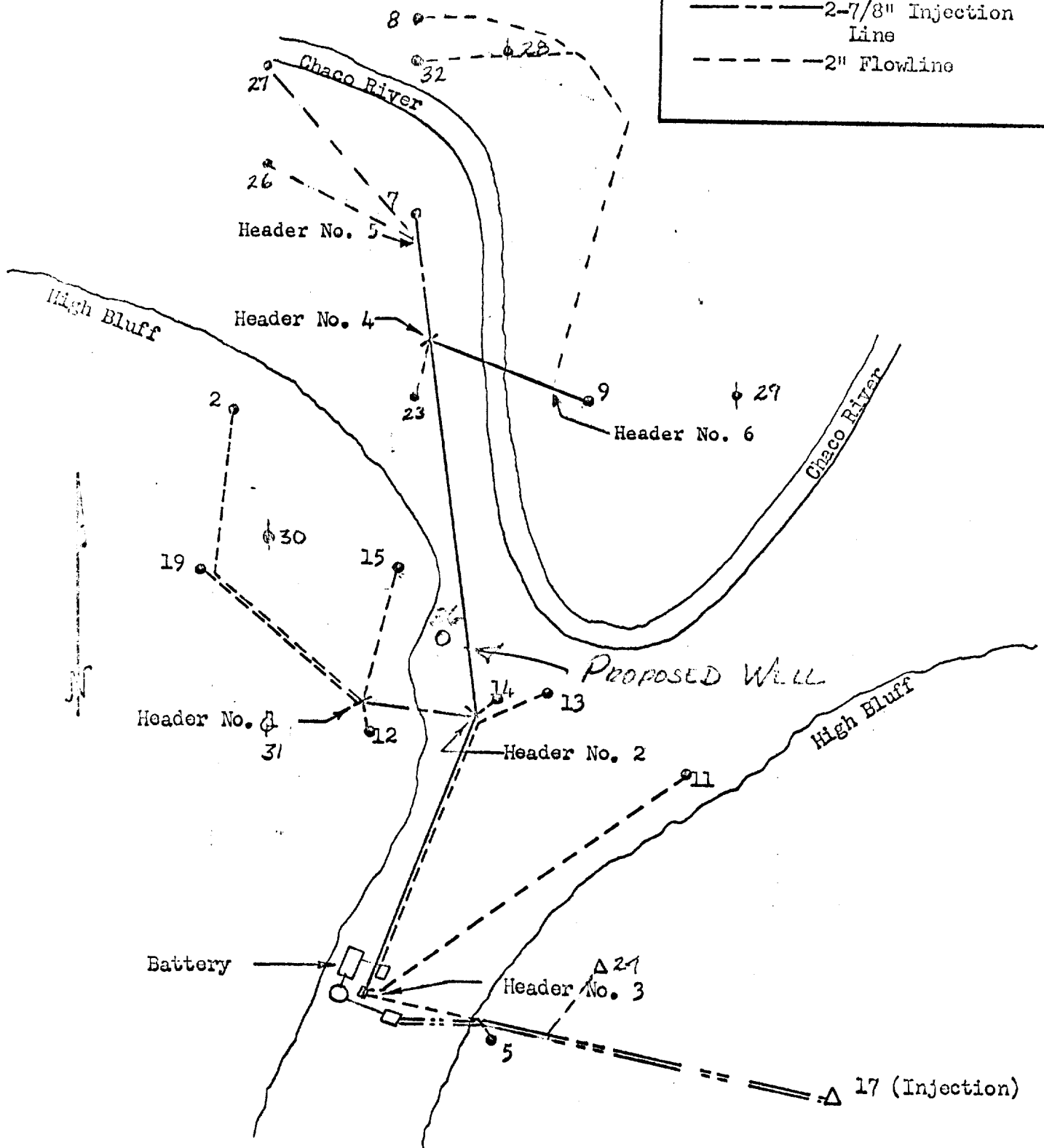
SCALE: 1" = 500'

LEASE DEEDS

YOUNG BLOW

from map by LRC

- 4" Production Line & 2" Flowline
- - - - 3" Production Line & 2" Flowline
- - - - 2-7/8" Injection Line
- - - - 2" Flowline



PAN AMERICAN PETROLEUM CORPORATION

HOGBACK DAKOTA FIELD FLOWLINE SYSTEM

SCALE: None

DRG. 1