

UNITED STATES
DEPARTMENT OF THE INTERIOR
GEOLOGICAL SURVEY

30-045-21530

APPLICATION FOR PERMIT TO DRILL, DEEPEN, OR PLUG BACK

1a. TYPE OF WORK

DRILL ☒DEEPEN ☐PLUG BACK ☐

b. TYPE OF WELL

OIL
WELL ☐GAS
WELL ☐

OTHER

SINGLE
ZONE ☒MULTIPLE
ZONE ☐

2. NAME OF OPERATOR

Southern Union Production Company

3. ADDRESS OF OPERATOR

P. O. Box 808, Farmington, New Mexico 87401

4. LOCATION OF WELL (Report location clearly and in accordance with any State requirements.)*

At surface

1905 ft. from the South line & 1090 ft. from the West line.

At proposed prod. zone Same as above.

14. DISTANCE IN MILES AND DIRECTION FROM NEAREST TOWN OR POST OFFICE*

2 miles South of Bloomfield, New Mexico

15. DISTANCE FROM PROPOSED*

LOCATION TO NEAREST

PROPERTY OR LEASE LINE, FT.

(Also to nearest drlg. unit line, if any)

790 - Lease

790 Unit

18. DISTANCE FROM PROPOSED LOCATION*

TO NEAREST WELL, DRILLING, COMPLETED,

OR APPLIED FOR, ON THIS LEASE, FT.

Approx. 390 ft.

16. NO. OF ACRES IN LEASE

600.69

19. PROPOSED DEPTH

1890 feet

17. NO. OF ACRES ASSIGNED
TO THIS WELL

400.00 (SW 1/4) 159.11

20. ROTARY OR CABLE TOOLS

Rotary

21. ELEVATIONS (Show whether DF, RT, GR, etc.)

5645 ft. Ungraded Gr.

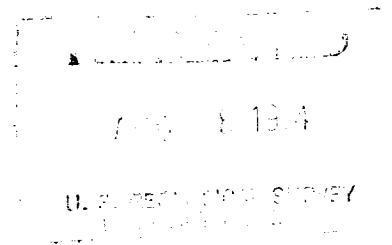
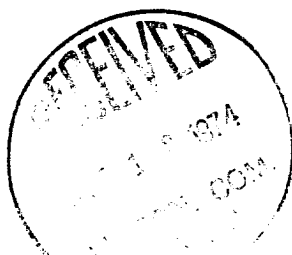
22. APPROX. DATE WORK WILL START*

September 1, 1974

23. PROPOSED CASING AND CEMENTING PROGRAM

SIZE OF HOLE	SIZE OF CASING	WEIGHT PER FOOT	SETTING DEPTH	QUANTITY OF CEMENT
12-1/4"	8-5/8"	24.0#	190 ft.	125 sacks
7-7/8"	2-7/8"	6.90#	1890 ft.	200 sacks

We propose to drill a Pictured Cliffs gas well to a total depth of approx. 1890 feet. The well will be Sand-Water fraced in order to stimulate production. 1-1/4" - 2.33#, I.J. tubing will be run to a depth of approx. 1790 feet.



IN ABOVE SPACE DESCRIBE PROPOSED PROGRAM: If proposal is to deepen or plug back, give data on present productive zone and proposed new productive zone. If proposal is to drill or deepen directionally, give pertinent data on subsurface locations and measured and true vertical depths. Give blowout preventer program, if any.

24. ORIGINAL SIGNED BY

B. R. VANDERSLICE

SIGNED

B. R. Vanderslice

TITLE

Area Superintendent

DATE

August 7, 1974

(This space for Federal or State office use)

PERMIT NO.

APPROVAL DATE

APPROVED BY

TITLE

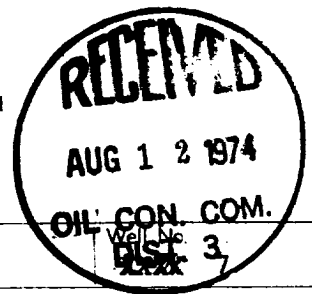
DATE

CONDITIONS OF APPROVAL, IF ANY:

*See Instructions On Reverse Side

**NEW MEXICO OIL CONSERVATION COMMISSION
WELL LOCATION AND ACERAGE DEDICATION PLAT**

All distances must be from the outer boundaries of the Section



Operator SOUTHERN UNION PRODUCTION CO.			Lease 300012X SUMMIT	
Unit Letter K	Section 34	Township 29 NORTH	Range 11 WEST	County SAN JUAN
Actual Footage Location of Well: 1505 feet from the SOUTH line and 1850 feet from the WEST line				
Ground Level Elev. 5645	Produce Cr. Wag. Cr.	Producing Formation Pictured Cliffs	Pool Falcher - Ruts	Dedicated Acreage: 169.69 Acres 157-11

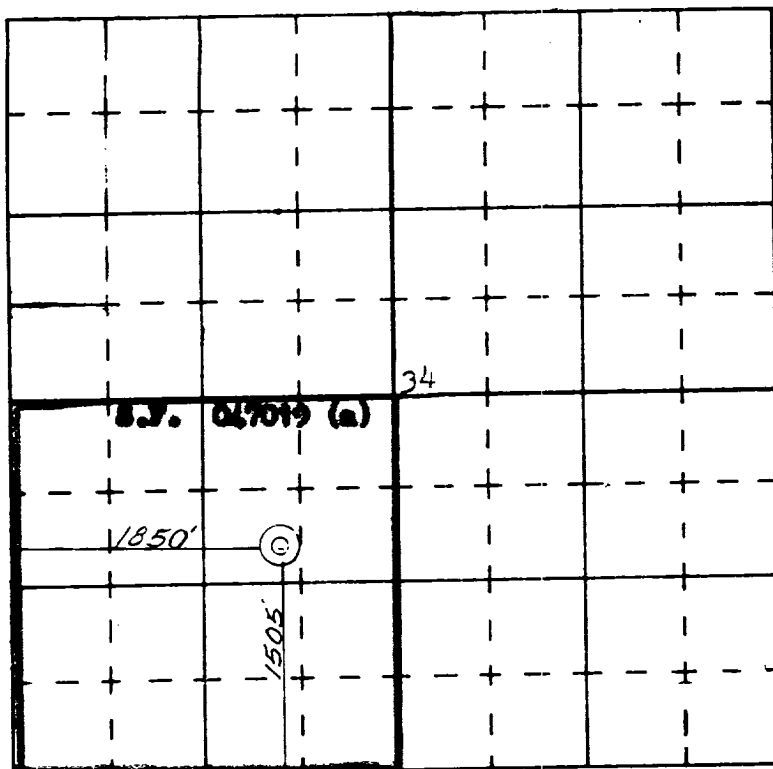
1. Outline the acreage dedicated to the subject well by colored pencil or hatchure marks on the plat below.
2. If more than one lease is dedicated to the well, outline each and identify the ownership thereof (both as to working interest and royalty).
3. If more than one lease of different ownership is dedicated to the well, have the interests of all owners been consolidated by communitization, unitization, force-pooling, etc?

() Yes () No If answer is "yes," type of consolidation

If answer is "no," list the owners and tract descriptions which have actually consolidated. (Use reverse side of this form if necessary.)

No allowable will be assigned to the well until all interests have been consolidated (by communitization, unitization, forced-pooling, or otherwise) or until a non standard unit, eliminating such interests, has been approved by the Commission.

———— Dedicated Acreage



CERTIFICATION

I hereby certify that the information contained herein is true and complete to the best of my knowledge and belief.

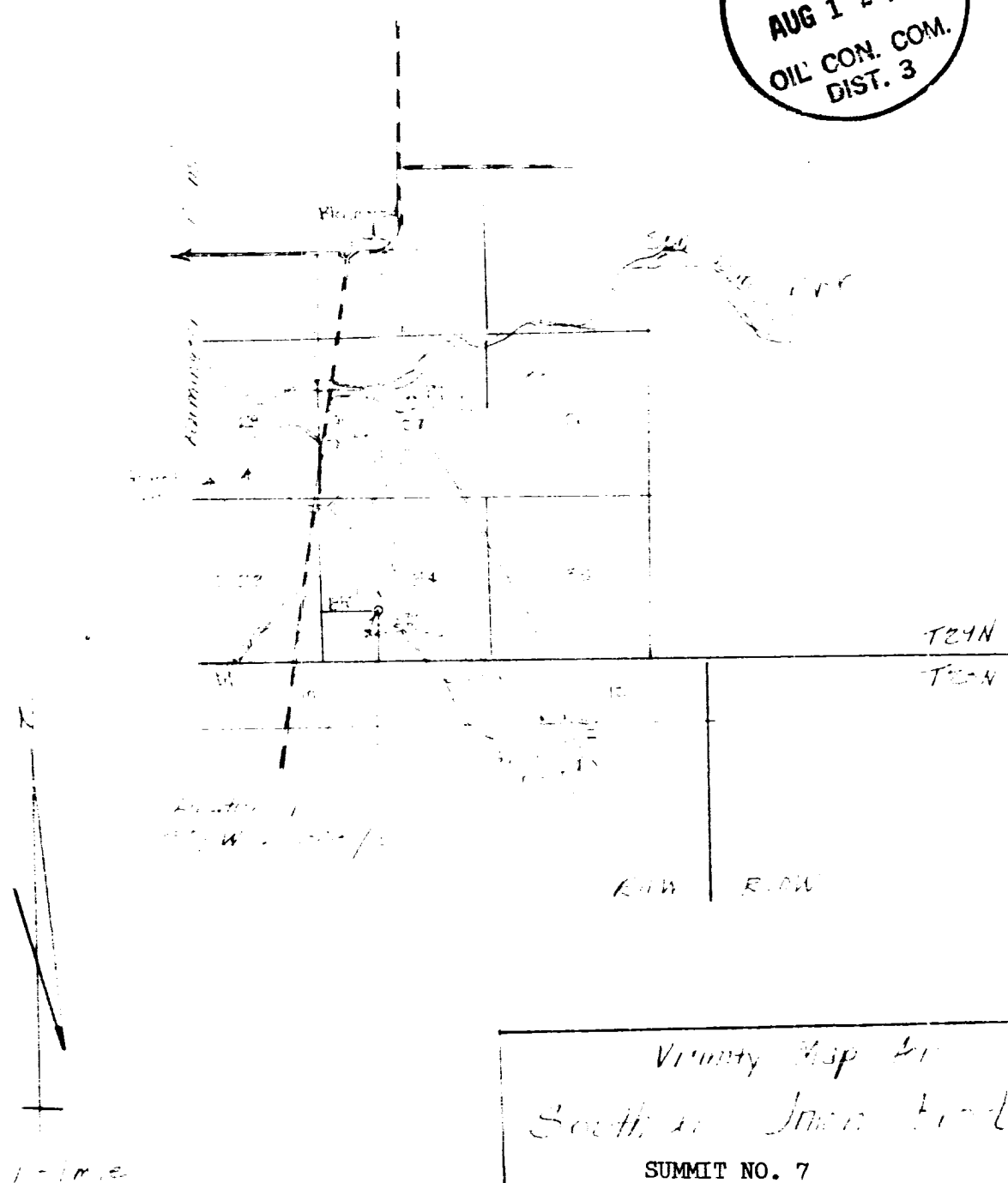
**ORIGINAL SIGNED BY
B. R. VANDERLICE**

Name **B. R. Vanderlice**
Position **Area Superintendent**
Company **Southern Union Production Co.**
Date **August 7, 1974**

I hereby certify that the well location shown on this plat was plotted from field notes of actual surveys made by me or under my supervision, and that the same is true and correct to the best of my knowledge and belief.

Date Surveyed **5 August 1974**
Registered Professional Engineer and/or Land Surveyor
James R. Leese
James R. Leese
Certificate No. **1463**

RECEIVED
 AUG 1 2 1974
 OIL CON. COM.
 DIST. 3



Locality Map for
 South of Iowa Road.
 SUMMIT NO. 7
 Well located at NE/4
 Sec 24 T24N
 R24W
 Date 8/6/74

SOUTHERN UNION PRODUCTION COMPANY

SUMMIT NO. 7

1505/S line & 1850/W line

Sec. 34, T-29N, R-11W

SAN JUAN COUNTY, NEW MEXICO

