

30-045-21625

UNITED STATES  
DEPARTMENT OF THE INTERIOR  
GEOLOGICAL SURVEY

## APPLICATION FOR PERMIT TO DRILL, DEEPEN, OR PLUG BACK

1a. TYPE OF WORK

DRILL ☒DEEPEN ☐PLUG BACK ☐

b. TYPE OF WELL

OIL  
WELL ☐GAS  
WELL ☒OTHER ☐SINGLE  
ZONE ☐MULTIPLE  
ZONE ☐

2. NAME OF OPERATOR

~~W. C. Harrison~~ ~~Rayless~~

3. ADDRESS OF OPERATOR

P.O. Box 1541, Farmington, New Mexico 87401

4. LOCATION OF WELL (Report location clearly and in accordance with any State requirements.)

At surface

1850' T&amp;L and 1850' T&amp;L

At proposed prod. zone

14. DISTANCE IN MILES AND DIRECTION FROM NEAREST TOWN OR POST OFFICE\*

15. DISTANCE FROM PROPOSED\*

LOCATION TO NEAREST  
PROPERTY OR LEASE LINE, FT.  
(Also to nearest drg. unit line, if any)18. DISTANCE FROM PROPOSED LOCATION\*  
TO NEAREST WELL, DRILLING, COMPLETED,  
OR APPLIED FOR, ON THIS LEASE, FT.

16. NO. OF ACRES IN LEASE\*

19. PROPOSED DEPTH

5900

17. NO. OF ACRES ASSIGNED  
TO THIS WELL

37 320

20. ROTARY OR CABLE TOOLS

Rotary

21. ELEVATIONS (Show whether DP, RT, GR, etc.)

5237 GL

22. APPROX. DATE WORK WILL START\*

January 20, 1974

## 23. PROPOSED CASING AND CEMENTING PROGRAM

SIZE OF HOLE	SIZE OF CASING	WEIGHT PER FOOT	SETTING DEPTH	QUANTITY OF CEMENT
12 1/4	8 5/8	20"	175'	150 sack
7 7/8	4 1/2	9.5 & 10.5	5900'	400 sack

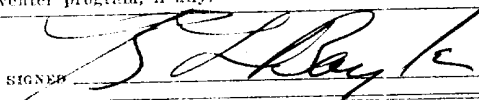
Will drill 12 1/4 hole and set 175' of 8 5/8" surface casing with 150 sack cement.  
Will drill 7 7/8" hole to 5900' to test Dakota formation. If appears productive,  
will set 4 1/2" casing at TD with 400 sack cement. Will perforate and test.

DEC 26 1974

IN ABOVE SPACE DESCRIBE PROPOSED PROGRAM: If proposal is to deepen or plug back, give data on present productive zone and proposed new productive zone. If proposal is to drill or deepen directionally, give pertinent data on subsurface locations and measured and true vertical depths. Give blowout preventer program, if any.

24.

SIGNED



TITLE

Co-Owner

DATE

December 24, 1974

(This space for Federal or State office use)

PERMIT NO.

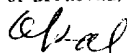
APPROVAL DATE

APPROVED BY

TITLE

DATE

CONDITIONS OF APPROVAL, IF ANY:



\*See Instructions On Reverse Side

NEW MEXICO OIL CONSERVATION COMMISSION  
WELL LOCATION AND ACREAGE DEDICATION PLAT

Form C-102  
Supersedes C-128  
Effective 1-1-65

All distances must be from the outer boundaries of the Section.

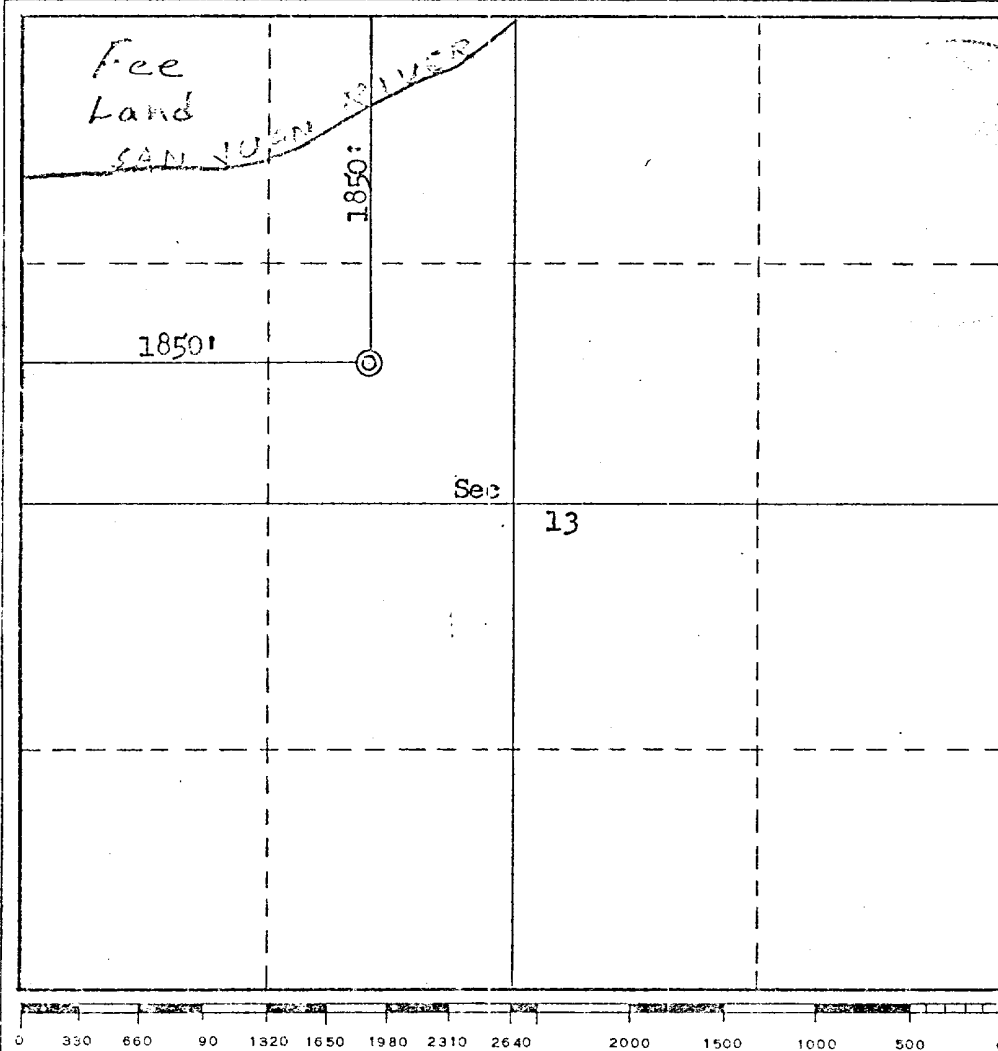
Operator <b>Merrion &amp; Bayless</b>			Lease <b>Navajo "H"</b>		Well No. <b>14</b>
Unit Letter <b>F</b>	Section <b>13</b>	Township <b>29N</b>	Range <b>14W</b>	County <b>San Juan</b>	
Actual Footage Location of Well: <b>1850</b> feet from the <b>North</b> line and <b>1850</b> feet from the <b>West</b> line					
Ground Level Elev. <b>5237</b>	Producing Formation <b>Dakota</b>		Pool <b>Basin Dakota</b>	Dedicated Acreage: <b>300</b> Acres	

1. Outline the acreage dedicated to the subject well by colored pencil or hatchure marks on the plat below.
2. If more than one lease is dedicated to the well, outline each and identify the ownership thereof (both as to working interest and royalty). **Merrion & Bayless hold leases on all lands within Section 13.**
3. If more than one lease of different ownership is dedicated to the well, have the interests of all owners been consolidated by communitization, unitization, force-pooling, etc? **Will be communitized.**

☐ Yes ☐ No If answer is "yes;" type of consolidation \_\_\_\_\_

If answer is "no," list the owners and tract descriptions which have actually been consolidated. (Use reverse side of this form if necessary.) \_\_\_\_\_

No allowable will be assigned to the well until all interests have been consolidated (by communitization, unitization, forced-pooling, or otherwise) or until a non-standard unit, eliminating such interests, has been approved by the Commission.



CERTIFICATION

I hereby certify that the information contained herein is true and complete to the best of my knowledge and belief.

*Robert L. Bayless*  
Name

Robert L. Bayless

Position

Co-Owner

Company

Merrion & Bayless

Date

December 24, 1974

I hereby certify that the well location shown on this plat was plotted from field notes of actual surveys made by me or under my supervision, and that the same is true and correct to the best of my knowledge and belief.

Date Surveyed:

December 13, 1974

Registered Professional Engineer and/or Land Surveyor

*Fred B. Kerr Jr.*  
Fred B. Kerr Jr.

Certificate No.

3950

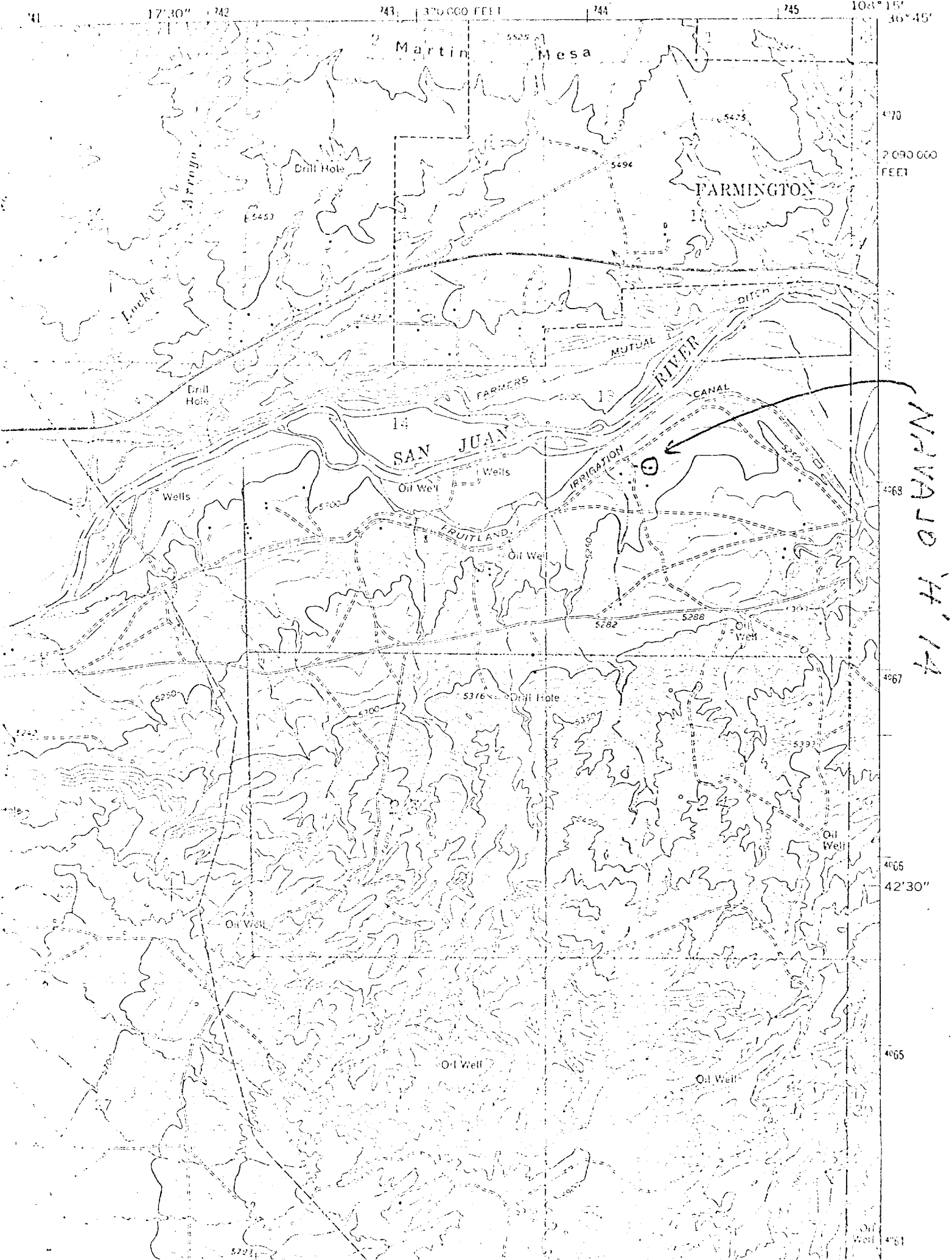
DEVELOPMENT PLAN

NAVAJO 'H' #11

1. Existing roads and proposed location are shown on attached topographic map.
2. Existing wells and lateral roads are shown on topographic map.
3. Water will be obtained from the San Juan River.
4. Rig layout is attached.
5. Robert L. Bayless - (505) 325-5093 will be field representative.

KIRTLAND QUADRANGLE  
NEW MEXICO—SAN JUAN CO.  
7.5 MINUTE SERIES (TOPOGRAPHIC)

(CAP 11)



LOCATION AND EQUIPMENT LAY-OUT

