

UNITED STATES
DEPARTMENT OF THE INTERIOR
GEOLOGICAL SURVEY

30-045-21628

APPLICATION FOR PERMIT TO DRILL, DEEPEN, OR PLUG BACK

1a. TYPE OF WORK

DRILL ☒DEEPEN ☐PLUG BACK ☐

b. TYPE OF WELL

OIL
WELL ☒GAS
WELL ☐OTHER ☐SINGLE
ZONE ☐MULTIPLE
ZONE ☐

2. NAME OF OPERATOR

Walter Duncan

3. ADDRESS OF OPERATOR

Box 234, Farmington, New Mexico 87401

4. LOCATION OF WELL (Report location clearly and in accordance with any State requirements.)

At surface

2586' FNL — 2380' FWL

At proposed prod. zone

14. DISTANCE IN MILES AND DIRECTION FROM NEAREST TOWN OR POST OFFICE*

8 miles east southeast of Shiprock, New Mexico

15. DISTANCE FROM PROPOSED*

LOCATION TO NEAREST
PROPERTY OR LEASE LINE, FT.

(Also to nearest drlg. unit line, if any) 2380'

18. DISTANCE FROM PROPOSED LOCATION*

TO NEAREST WELL, DRILLING, COMPLETED,
OR APPLIED FOR, ON THIS LEASE, FT.

610' approx

16. NO. OF ACRES IN LEASE

640

19. PROPOSED DEPTH

700'

17. NO. OF ACRES ASSIGNED
TO THIS WELL

2+1/2 40

20. ROTARY OR CABLE TOOLS

Cable tool surface casing
Rotary btm surface csg to TD

21. ELEVATIONS (Show whether DF, RT, GR, etc.)

4980' GR

22. APPROX. DATE WORK WILL START*

1-21-75

23. PROPOSED CASING AND CEMENTING PROGRAM

SIZE OF HOLE	SIZE OF CASING	WEIGHT PER FOOT	SETTING DEPTH	QUANTITY OF CEMENT
9"	7"	20#	30'	5 sx
6-1/4"	4-1/2"	10.5#	680'	75 sx

1. Drive 7" casing thru boulders and cement with 5 sx cement.
2. Drill 6-1/4" hole to top of Dakota sand at approximately 680'.
3. Run 4-1/2" casing and cement to surface with 75 sx cement.
4. Drill 3-7/8" hole below 4-1/2" casing to approximately 700'.
5. Complete well in open hole without stimulation of Dakota sand.
6. Run 2-3/8" tubing to 695'.

IN ABOVE SPACE DESCRIBE PROPOSED PROGRAM: If proposal is to deepen or plug back, give data on present productive zone and proposed new productive zone. If proposal is to drill or deepen directionally, give pertinent data on subsurface locations and measured and true vertical depths. Give blowout preventer program, if any.

24.

SIGNED Original signed by T. A. Dugan
Thomas A. Dugan

TITLE Petroleum Engineer

DATE 1-3-75

(This space for Federal or State office use)

PERMIT NO.

APPROVAL DATE

APPROVED BY

TITLE

CONDITIONS OF APPROVAL, IF ANY:

Held 104 for NSL

JAN 6 1975

*See Instructions On Reverse Side

**NEW MEXICO OIL CONSERVATION COMMISSION
WELL LOCATION AND ACREAGE DEDICATION PLAT**

Form C-102
Supersedes C-128
Effective 1-1-55

All distances must be from the outer boundaries of the Section.

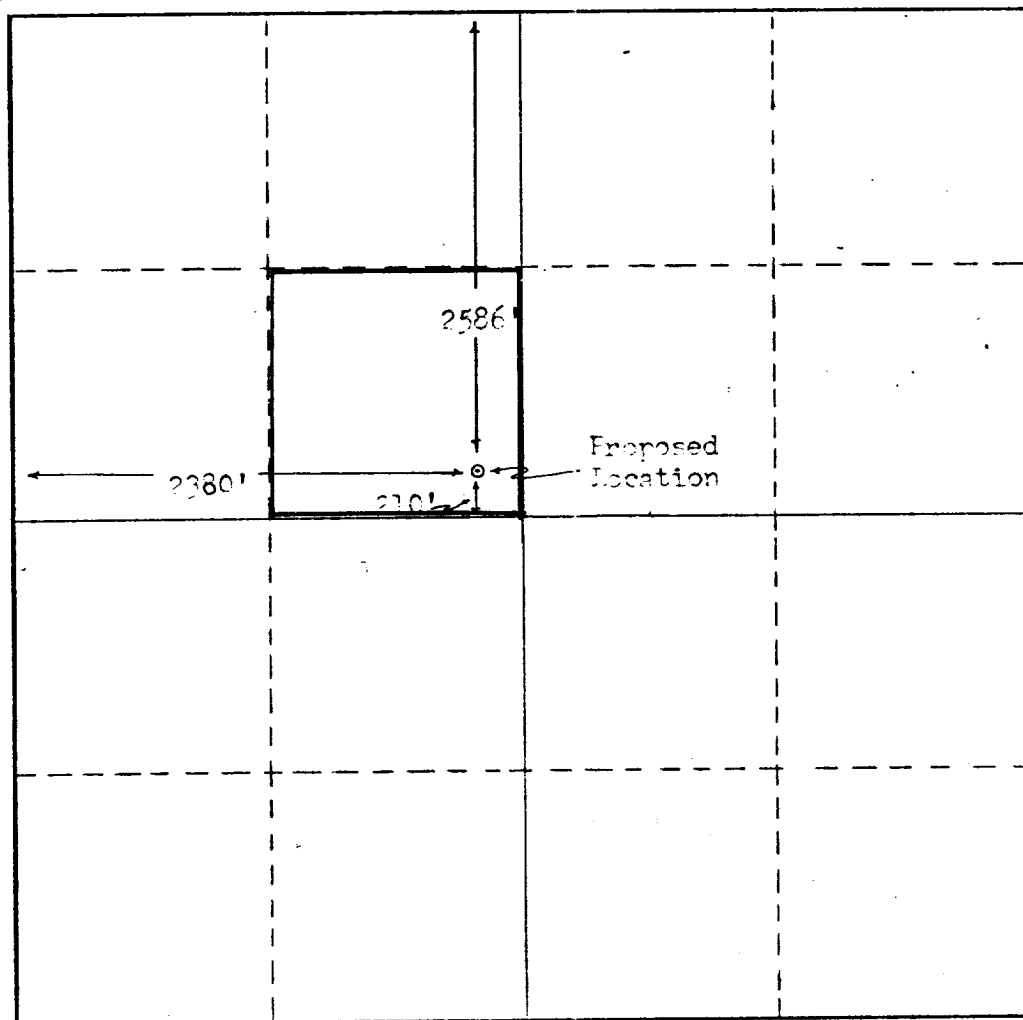
Operator Walter Duncan			Lease North Hogback /		Well No. 2-21
Unit Letter F	Section 1	Township 29 North	Range 17 West	County San Juan	
Actual Footage Location of Well: 2586 feet from the North line and 2380 feet from the West line					
Ground Level Elev. 4080	Producing Formation Dakota		Pool Slickrock		Dedicated Acreage: 40 Acres

1. Outline the acreage dedicated to the subject well by colored pencil or hachure marks on the plat below.
2. If more than one lease is dedicated to the well, outline each and identify the ownership thereof (both as to working interest and royalty).
3. If more than one lease of different ownership is dedicated to the well, have the interests of all owners been consolidated by communitization, unitization, force-pooling, etc?

☐ Yes ☐ No If answer is "yes," type of consolidation _____

If answer is "no," list the owners and tract descriptions which have actually been consolidated. (Use reverse side of this form if necessary.) _____

No allowable will be assigned to the well until all interests have been consolidated (by communitization, unitization, forced-pooling, or otherwise) or until a non-standard unit, eliminating such interests, has been approved by the Commission.



CERTIFICATION

I hereby certify that the information contained herein is true and complete to the best of my knowledge and belief.

Original signed by T. A. Dugan

Name Thomas A. Dugan
Position Petroleum Engineer
Company Walter Duncan
Date 1-3-75

I hereby certify that the well location shown on this plat was plotted from field notes of actual surveys made by me or under my supervision, and that the same is true, and correct to the best of my knowledge and belief.

Date Surveyed Frederick H. Hood
Registered Professional Engineer and/or Land Surveyor Frederick H. Hood
Certificate No. 2075