

30-04-21787

Form C-101
Revised 1-1-65

NEW MEXICO OIL CONSERVATION COMMISSION

NO. OF COPIES RECEIVED	11
DISTRIBUTION	
SANTA FE	1
FILE	1
U.S.G.S.	2
LAND OFFICE	1
OPERATOR	2

5A. Indicate Type of Lease	
STATE <input checked="" type="checkbox"/>	FEE <input type="checkbox"/>
5. State Oil & Gas Lease No.	
7. Unit Agreement Name	
8. Farm or Lease Name	
Koch State	
9. Well No.	
#1 A	
10. Field and Pool, or Wildcat	
Blanco Mesaverde Aztec Pictured Cliffs	
12. County	
San Juan	
19. Proposed Depth	19A. Formation
4550	Mesaverde-PC
20. Rotary or C.T.	
Rotary	
21. Elevations (Show whether DF, RT, etc.)	21A. Kind & Status Plug. Bond
5710	
21B. Drilling Contractor	22. Approx. Date Work will start

APPLICATION FOR PERMIT TO DRILL, DEEPEN, OR PLUG BACK

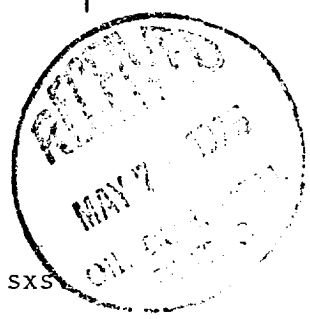
1a. Type of Work	
b. Type of Well	
DRILL <input checked="" type="checkbox"/>	DEEPEN <input type="checkbox"/>
PLUG BACK <input type="checkbox"/>	
OIL WELL <input type="checkbox"/>	GAS WELL <input checked="" type="checkbox"/>
OTHER <input type="checkbox"/>	
2. Name of Operator	
Aztec Oil & Gas Company	
3. Address of Operator	
P. O. Drawer 570, Farmington, New Mexico	
4. Location of Well	
UNIT LETTER I	LOCATED 2110
FEET FROM THE South LINE	
AND 620	FEET FROM THE East
LINE OF SEC. 36 TWP. 29N RGE. 9W NMPM	
19. Proposed Depth	
4550	
19A. Formation	
Mesaverde-PC	
20. Rotary or C.T.	
Rotary	
21. Elevations (Show whether DF, RT, etc.)	21A. Kind & Status Plug. Bond
5710	
21B. Drilling Contractor	22. Approx. Date Work will start

PROPOSED CASING AND CEMENT PROGRAM

SIZE OF HOLE	SIZE OF CASING	WEIGHT PER FOOT	SETTING DEPTH	SACKS OF CEMENT	EST. TOP
15"	9-5/8"	32.30	300	300	
8-3/4"	7"	23	2400	200	
6-3/4"	4-1/2"	10.50	2300 - 4550	300	
	1-1/2"	2.90	4500		
	1-1/4"	2.40	3250		

PROPOSE TO:

Drill 15" hole. Set 300' of 9-5/8" surface casing.
Cement with 300 sxs.
Drill 8-3/4" hole to approximately 2400'.
Run 7" casing. Cement with 200 sxs.
Gas drill 6-3/4" hole to approximately 4550'.
Run 4-1/2" liner from 2300 to 4550'. Cement with 300 sxs.
Perforate Mesaverde and Pictured Cliffs formations.
Sand/water frac each with 60,000 gallons water and 60,000# sand.
Run Baker Model "D" Packer above Mesaverde perforations.
Run 1-1/2" tubing to Mesaverde.
Run 1-1/4" tubing opposite Pictured Cliffs.
Install well head.



APPROVAL VALID
FOR 90 DAYS
DRILLING

8-5-75

IN ABOVE SPACE DESCRIBE PROPOSED PROGRAM; IF PROPOSAL IS TO DEEPEN OR PLUG BACK, GIVE DATA ON PRESENT PRODUCTIVE ZONE AND PROPOSED NEW PRODUCTIVE ZONE. GIVE BLOWOUT PREVENTER PROGRAM, IF ANY.

I hereby certify that the information above is true and complete to the best of my knowledge and belief.

Signed Jac C. Coleman Title District Superintendent Date May 1, 1975

(This space for State Use)

APPROVED BY AK Kendrick TITLE PETROLEUM ENGINEER DIST. NO. 3 DATE MAY 7 1975

CONDITIONS OF APPROVAL, IF ANY:

**NEW MEXICO OIL CONSERVATION COMMISSION
WELL LOCATION AND ACREAGE DEDICATION PLAT**

Form C-102
Supersedes C-128
Effective 1-1-65

All distances must be from the outer boundaries of the Section.

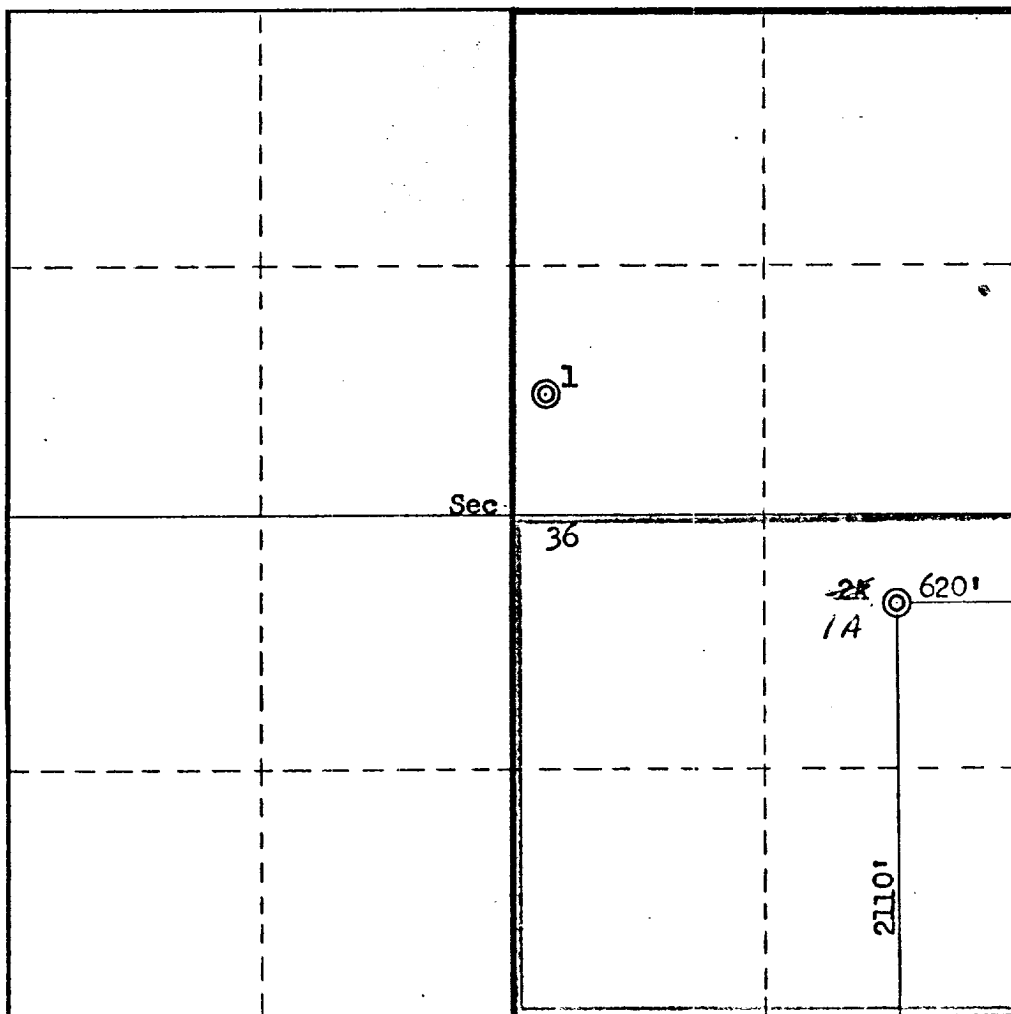
Operator Aztec Oil & Gas Company			Lease Koch State		Well No. 1-A
Unit Letter I	Section 36	Township 29N	Range 9W	County San Juan	
Actual Footage Location of Well: 2110 feet from the South line and 620 feet from the East line					
Ground Level Elev. 5710	Producing Formation Mesa Verde-PC		Pool Blanco - Aztec	Dedicated Acreage: 320 Acres	

1. Outline the acreage dedicated to the subject well by colored pencil or hachure marks on the plat below.
2. If more than one lease is dedicated to the well, outline each and identify the ownership thereof (both as to working interest and royalty).
3. If more than one lease of different ownership is dedicated to the well, have the interests of all owners been consolidated by communitization, unitization, force-pooling, etc?

☐ Yes ☐ No If answer is "yes," type of consolidation _____

If answer is "no," list the owners and tract descriptions which have actually been consolidated. (Use reverse side of this form if necessary.) _____

No allowable will be assigned to the well until all interests have been consolidated (by communitization, unitization, forced-pooling, or otherwise) or until a non-standard unit, eliminating such interests, has been approved by the Commission.



CERTIFICATION

I hereby certify that the information contained herein is true and complete to the best of my knowledge and belief.

Name
Joe C. Salmon
Position
District Superintendent
Company
Aztec Oil & Gas Company
Date
May 1, 1975

I hereby certify that the well location shown on this plat was plotted from field notes of actual surveys made by me or under my supervision, and that the same is true and correct to the best of my knowledge and belief.

Date Surveyed
April 29, 1975
Registered Professional Engineer and/or Land Surveyor
Fred B. Kerr, Jr.
Certificate No.
3950

