

UNITED STATES
DEPARTMENT OF THE INTERIOR
GEOLOGICAL SURVEY

30-045-21800

APPLICATION FOR PERMIT TO DRILL, DEEPEN, OR PLUG BACK

1a. TYPE OF WORK

DRILL ☒DEEPEN ☐PLUG BACK ☐

b. TYPE OF WELL

OIL
WELL ☐GAS
WELL ☒

OTHER

SINGLE
ZONE ☒MULTIPLE
ZONE ☐

2. NAME OF OPERATOR

Aztec Oil & Gas Company

3. ADDRESS OF OPERATOR

P. O. Drawer 570, Farmington, New Mexico

4. LOCATION OF WELL (Report location clearly and in accordance with any State requirements.)*
At surface

At proposed prod. zone 1145' FSL & 955' FEL

14. DISTANCE IN MILES AND DIRECTION FROM NEAREST TOWN OR POST OFFICE

15. DISTANCE FROM PROPOSED*

LOCATION TO NEAREST
PROPERTY OR LEASE LINE, FT.
(Also to nearest drlg. unit line, if any)18. DISTANCE FROM PROPOSED LOCATION*
TO NEAREST WELL, DRILLING, COMPLETED,
OR APPLIED FOR, ON THIS LEASE, FT.

21. ELEVATIONS (Show whether DF, RT, GR, etc.)

5702 GR

16. NO. OF ACRES IN LEASE

171.73

17. NO. OF ACRES ASSIGNED
TO THIS WELL

171.73

19. PROPOSED DEPTH

2,200

20. ROTARY OR CABLE TOOLS

rotary

22. APPROX. DATE WORK WILL START*

23.

PROPOSED CASING AND CEMENTING PROGRAM

SIZE OF HOLE	SIZE OF CASING	WEIGHT PER FOOT	SETTING DEPTH	QUANTITY OF CEMENT
12-1/4"	8-5/8	24#	100	100 sxs
7-7/8"	4-1/2	10.50#	2200	150 sxs
	1	1.7#	2150	

PROPOSE TO:

Drill 12 1/4" hole.
Run 8-5/8" surface casing to approximately 100 feet.
Cement with 100 sxs.
Drill 7-7/8" hole to approximately 2,200 feet.
Cement with 150 sxs.
Perforate Pictured Cliffs formation with 2 shots per foot.
Sand/water frac with 40,000# sand and 40,000 gallons water.
Swab well in.
Run 1" tubing.
Install well head.

MAY 13 1975

IN ABOVE SPACE DESCRIBE PROPOSED PROGRAM: If proposal is to deepen or plug back, give data on present productive zone and proposed new productive zone. If proposal is to drill or deepen directionally, give pertinent data on subsurface locations and measured and true vertical depths. Give blowout preventer program, if any.

24.

SIGNED

Joe C. Shemon

TITLE

District Superintendent

DATE 5-1-75

(This space for Federal or State office use)

PERMIT NO.

APPROVAL DATE

APPROVED BY

TITLE

DATE

CONDITIONS OF APPROVAL, IF ANY:

*See Instructions On Reverse Side

NEW MEXICO THE CONSERVATION COMMISSION
WELL LOCATION AND ACREAGE DEDICATION PLAT

Approximate location of well from the corner to which it is nearest

Lessee Aztec Oil & Gas Company			Tract Cain		Section 21
Range P	Section 30	Section 29N	Section 9W	County San Juan	
Approximate Location of Well					
Feet from the 1145		Feet from the South		Feet from the East	
Section 5702		Section Pictured Cliffs		Section Aztec	
Dedicated Acreage 171.75					Acres

- Outline the acreage dedicated to the subject well by colored pencil or hatchure marks on the plat below.
- If more than one lease is dedicated to the well, outline each and identify the ownership thereof (both as to working interest and royalty).
- If more than one lease of different ownership is dedicated to the well, have the interests of all owners been consolidated by communitization, unitization, force-pooling, etc?

☐ Yes ☐ No If answer is "yes" type of consolidation _____

If answer is "no" list the owners and tract descriptions which have actually been consolidated. (Use reverse side of this form if necessary.) _____

No allowable will be assigned to the well until all interests have been consolidated (by communitization, unitization, force-pooling, or otherwise) or until a non-standard unit, eliminating such interests, has been approved by the Commission.

CERTIFICATION

I hereby certify that the information contained herein is true and complete to the best of my knowledge and belief.

ORIGINAL SIGNED BY JOE C. SALMON

District Superintendent

Aztec Oil & Gas Company

May 1, 1975

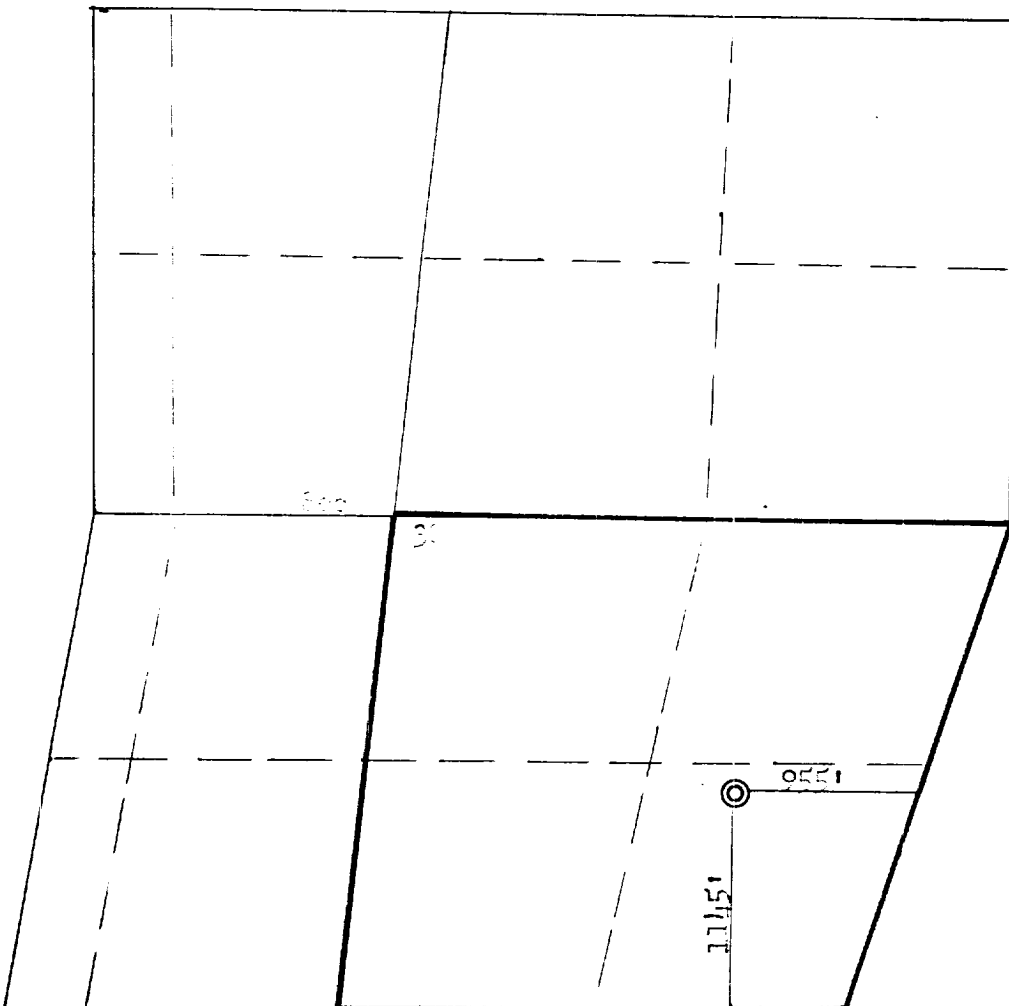
I hereby certify that the well location shown on this plat was plotted from notes of actual surveys made by me or under my supervision, and that the same is true and correct to the best of my knowledge and belief.

April 28, 1975

Inspector of Geological Survey

Fred B. Kerr Jr.

3950



AZTEC OIL & GAS COMPANY

P. O. DRAWER 570
FARMINGTON, NEW MEXICO 87401

May 1, 1975

United States Geological Survey
P. O. Box 959
Farmington, New Mexico

Attention: Mr. P. T. McGrath

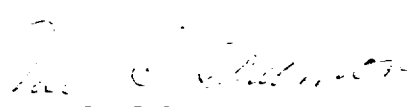
RE: Blowout Preventer Plan

Dear Sir:

All drilling and completion wells will be equipped with 8" Shaffer LWP double hydraulic blowout preventers and a 2000 "C" Payne Hydraulic closing unit with steel line.

The preventer is 3000# working pressure and 6000# test.

All crews will be thoroughly trained in the operation of this preventer. The preventer will be tested at the beginning of every tower change to insure proper operation.


Joe C. Salmon
District Superintendent

JCS/dg

AZTEC OIL & GAS COMPANY

P. O. DRAWER 570
FARMINGTON, NEW MEXICO 87401

May 1, 1975

United States Geological Survey
P. O. Box 959
Farmington, New Mexico

Attention: Mr. P. T. McGrath

Dear Sir:

Enclosed please find map showing existing roads and planned access roads to Aztec Oil & Gas Company's Cain #21 well. The locations of tank batteries and flow lines will be on location with well.

There will be no camps or air strips.

Also enclosed is location layout showing approximate location of rig, pits and pipe rights.

Water supply will be San Juan River.

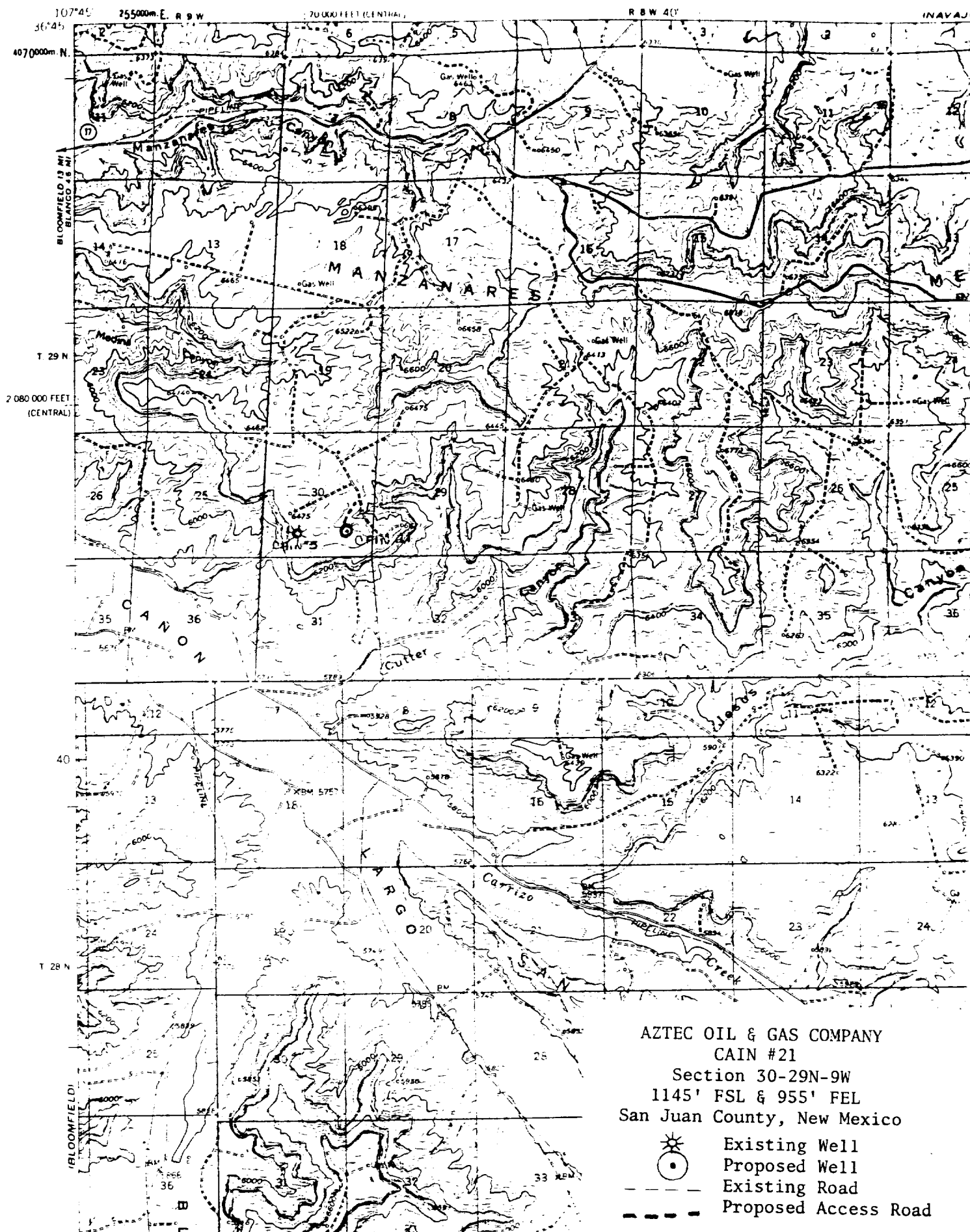
In the event of a dry hole, location will be graded and reseeded according to Bureau of Land Management standards.

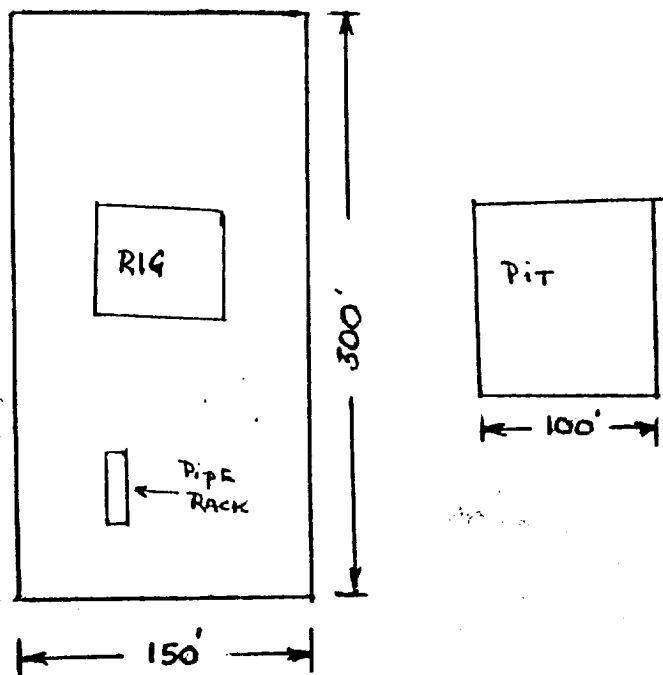


Joe C. Salmon
District Superintendent

JCS/dg

UNITED STATES
DEPARTMENT OF THE INTERIOR
GEOLOGICAL SURVEY





LOCATION LAYOUT