

UNITED STATES
DEPARTMENT OF THE INTERIOR
GEOLOGICAL SURVEY

30-045-21860

APPLICATION FOR PERMIT TO DRILL, DEEPEN, OR PLUG BACK

a. TYPE OF WORK

DRILL ☒DEEPEN ☐PLUG BACK ☐

b. TYPE OF WELL

OIL
WELL ☐GAS
WELL ☒

OTHER

SINGLE
ZONE ☐MULTIPLE
ZONE ☐

2. NAME OF OPERATOR

Tenneco Oil Company

3. ADDRESS OF OPERATOR

Suite 1200 Lincoln Tower Bldg., Denver, Colorado 80203

4. LOCATION OF WELL (Report location clearly and in accordance with any State requirements.)*

At surface

1622 FNL & 2010 FWL

At proposed prod. zone

14. DISTANCE IN MILES AND DIRECTION FROM NEAREST TOWN OR POST OFFICE*

15. DISTANCE FROM PROPOSED*

LOCATION TO NEAREST
PROPERTY OR LEASE LINE, FT.
(Also to nearest drilg. unit line, if any)18. DISTANCE FROM PROPOSED LOCATION*
TO NEAREST WELL, DRILLING, COMPLETED,
OR APPLIED FOR, ON THIS LEASE, FT.

16. NO. OF ACRES IN LEASE

1273.98

19. PROPOSED DEPTH

5870

17. NO. OF ACRES ASSIGNED
TO THIS WELL

294.88

20. ROTARY OR CABLE TOOLS

Rotary

21. ELEVATIONS (Show whether DF, RT, GR, etc.)

6450' GL

22. APPROX. DATE WORK WILL START*

23.

PROPOSED CASING AND CEMENTING PROGRAM

SIZE OF HOLE	SIZE OF CASING	WEIGHT PER FOOT	SETTING DEPTH	QUANTITY OF CEMENT
12 1/4"	9 5/8"	36#	+ 200'	Sufficient to circulate
8 3/4"	7 "	20#	+3600'	Cement back to surface casing
6 1/4"	4 1/2"	10.5#	+5870	Cement back to intermediate casing
	Liner			

The proposed drilling program for this well is as follows. Drill 12½" hole to + 200' and set a 9 5/8" casing, circulate cement to surface.

Drill 8 3/4" hole to + 3600' and run 7" casing and cement back to to surface casing.

Drill on to TD using gas as fluid. Log the hole and hang a 4½" liner to TD. Load hole with mud and cement liner back to 7". Set liner hanger and POH with drill pipe. This well will be completed through casing perforations in the Mesa Verde formation and stimulated as necessary to establish commercial gas production.

IN ABOVE SPACE DESCRIBE PROPOSED PROGRAM: If proposal is to deepen or plug back, give data on present productive zone and proposed new productive zone. If proposal is to drill or deepen directionally, give pertinent data on subsurface locations and measured and true vertical depths. Give blowout preventer program, if any.

24.

SIGNED

TITLE Production Clerk

DATE

(This space for Federal or State office use)

PERMIT NO.

APPROVAL DATE

APPROVED BY

TITLE

DATE

CONDITIONS OF APPROVAL, IF ANY:

*See Instructions On Reverse Side

NEW MEXICO OIL CONSERVATION COMMISSION
WELL LOCATION AND ACREAGE DEDICATION PLAT

Form O-100
Supersedes O-128
Effective 1-1-61

All distances must be from the outer boundaries of the Section

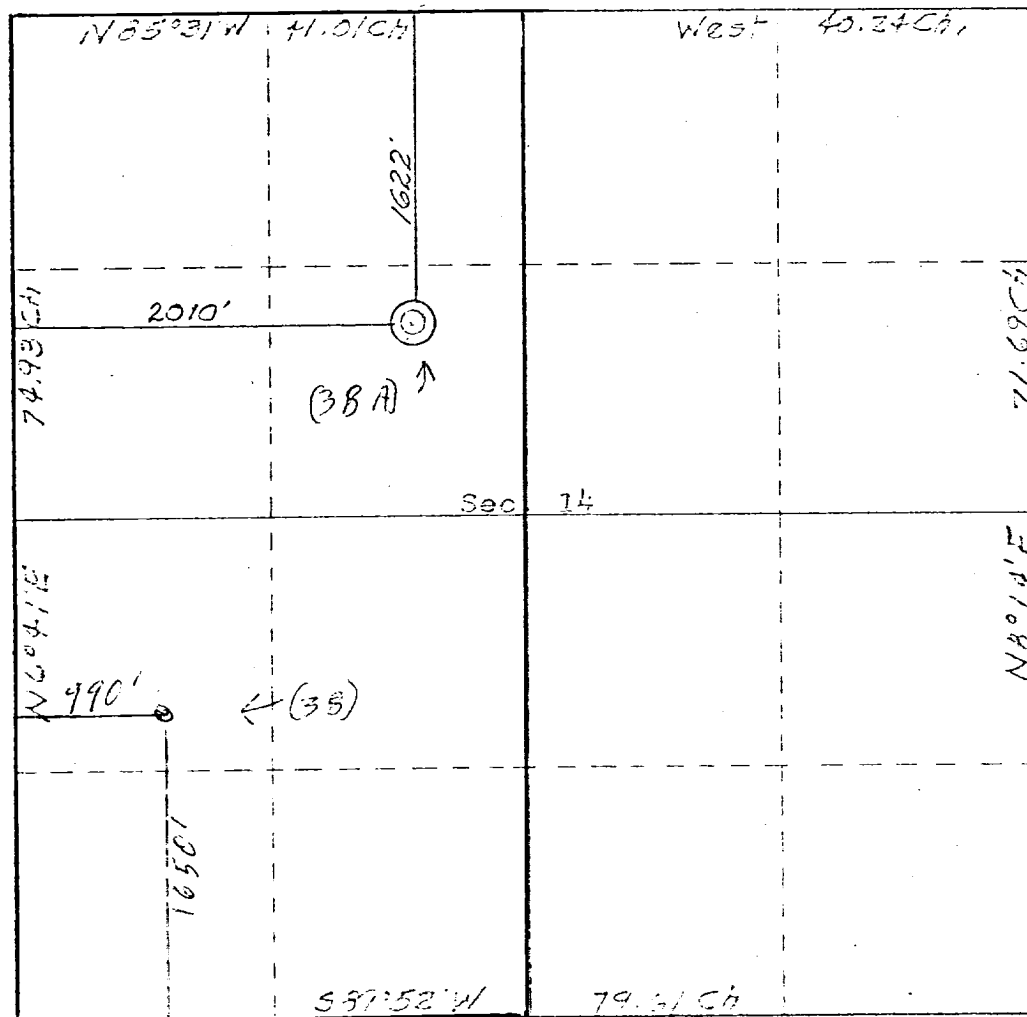
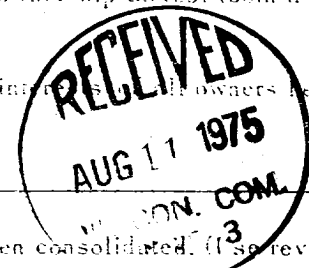
Operator TENNECO OIL COMPANY			Lease FLORANCE		Section 38-A
Well Letter F	Section 14	Township 30 NORTH	Range 8 WEST	County SAN JUAN	
Actual Position Location of Well: 1622 feet from the NORTH 2010 feet from the WEST					
Ground Level Elev. 5450.0	Producing Formation Blanco Mesaverde	Pool Blanco Mesaverde	Section Area, Acres 294.88		W/2

1. Outline the acreage dedicated to the subject well by colored pencil or hatchure marks on the plat below.
2. If more than one lease is dedicated to the well, outline each and identify the ownership thereof (both as to working interest and royalty).
3. If more than one lease of different ownership is dedicated to the well, have the interests of all owners been consolidated by communitization, unitization, force-pooling, etc?

☐ Yes ☐ No If answer is "yes," type of consolidation _____

If answer is "no," list the owners and tract descriptions which have actually been consolidated. (See reverse side of this form if necessary.) _____

No allowable will be assigned to the well until all interests have been consolidated (by communitization, unitization, forced-pooling, or otherwise) or until a non-standard unit, eliminating such interests, has been approved by the Commission.



CERTIFICATION

I hereby certify that the information contained herein is true and complete to the best of my knowledge and belief.

Ted F. Danks

Production Clerk

Tenneco Oil Co.

August 7 1975

I hereby certify that the well location shown on this plat was plotted from field notes of actual surveys made by me or under my supervision, and that the same is true and correct to the best of my knowledge and belief.

25 July, 1975

James P. Leese

James P. Leese

1463

TENNECO OIL COMPANY

PROGNOSIS TO DRILL AND COMPLETE

DIVISION Rocky Mountain Division

DATE: July 28, 1975

LEASE: Florence

WELL NO.: 38-A

LOCATION: 1622 FNL & 2010 FWL
S 14, T 30 N, R 8 W

FIELD: Blanco Mesa Verde

San Juan County, New Mexico

ESTIMATED ELEVATION: 6450 GL

ESTIMATED TOTAL DEPTH: 5870

PROJECTED HORIZON: Blanco Mesa Verde

DRILLING, CASING AND CEMENT PROGRAM:

1. MIRURT, Drill 12½" hole to ± 200'.
2. Set and cement 9 5/8" casing to T.D. and cement with sufficient cement to circ.
3. DO with 8 3/4" bit to ± 3600 feet.
4. Run 7" casing and cement back to surface casing.
5. DO of 7" using gas as the circulating fluid, do not drill more than 10' below 7" casing shoe until the hole has dried up completely and is dusting.
6. Drill the hole to T.D., log the hole dry as requested by drillsite geologist.
7. Run 4½" liner to T.D., load hole with mud and cement liner back to 7". Set liner hanger and POH w/drill pipe.
8. Estimated Tops:

Kirtland 2270
Fruitland

Pictured Cliffs 3290
Green Horn Shale 4767

Cliff House 5130
Point Lookout 5510

0 - 200 Feet spud mud

200 - + 3600 Gel chemical - low solids as needed to maintain good hole conditions.

CORING AND TESTING PROGRAM:

None

DEVIATION SURVEYS:

1. Survey surface hole at 100' intervals. Maximum allowable deviation at 200 is $1/2^\circ$.
2. FROM SURFACE TO TOTAL DEPTH DEVIATION SURVEYS MUST BE TAKEN EVERY 500' OR EACH TRIP WHICHEVER IS FIRST. This may entail running the TOTCO on wireline. Record each survey on the A.A.O.D.C. Drilling Report sheet. Maximum allowable change in deviation is 1° per 100'.

SAMPLES:

200 - _____ 30' samples
_____ to T.D. 10' samples

WELL SURVEYS:

GR - Induction - *Temperature*

GR - FDC

B.O.P.:

PREVENTORS MUST BE CHECKED FOR OPERATION EVERY 24 HOURS, AND THE CHECK MUST BE RECORDED ON THE A.A.O.D.C. DRILLING REPORT SHEET.

REPORTS:

1. A 6:00 A.M. drilling report including depth, formation, time distribution, mud properties, bit record, weight on bit, rotary speed, pump pressure, daily and cumulative water used, daily and cumulative mud cost and other pertinent information to be called in to Tenneco Oil Company, Denver, Colorado

Call the following numbers:

255-1995 - Report Box - automatic answering receiver that will take calls anytime day or night.

292-9920 - Phyllis Matera - 7:45 A.M. to 8:30 A.M. Monday morning report to include separate reports for Saturday, Sunday and Monday.

2. The yellow sheet of the A.A.O.D.C. report filled out completely, the original copy of the drilling time recorder, copies of water tickets and copies of any other invoices signed and received for Tenneco Oil Company will be mailed daily to:

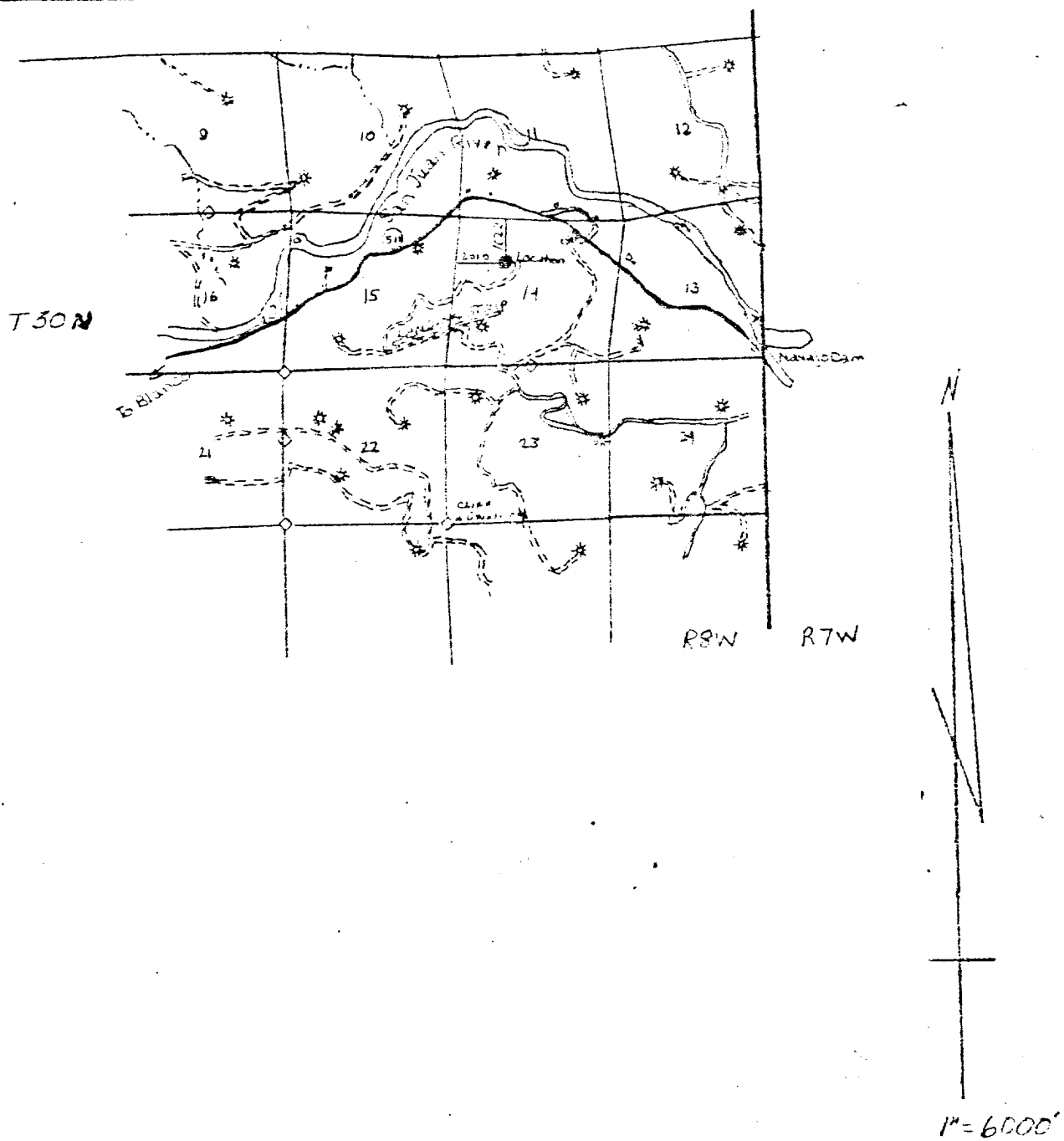
Tenneco Oil Company
Suite 1200 - Lincoln Tower Building
Denver, Colorado 80203

3. In cases of emergencies, call the following:

D. E. Brown (303) 771-3297

SURFACE USE PLAN

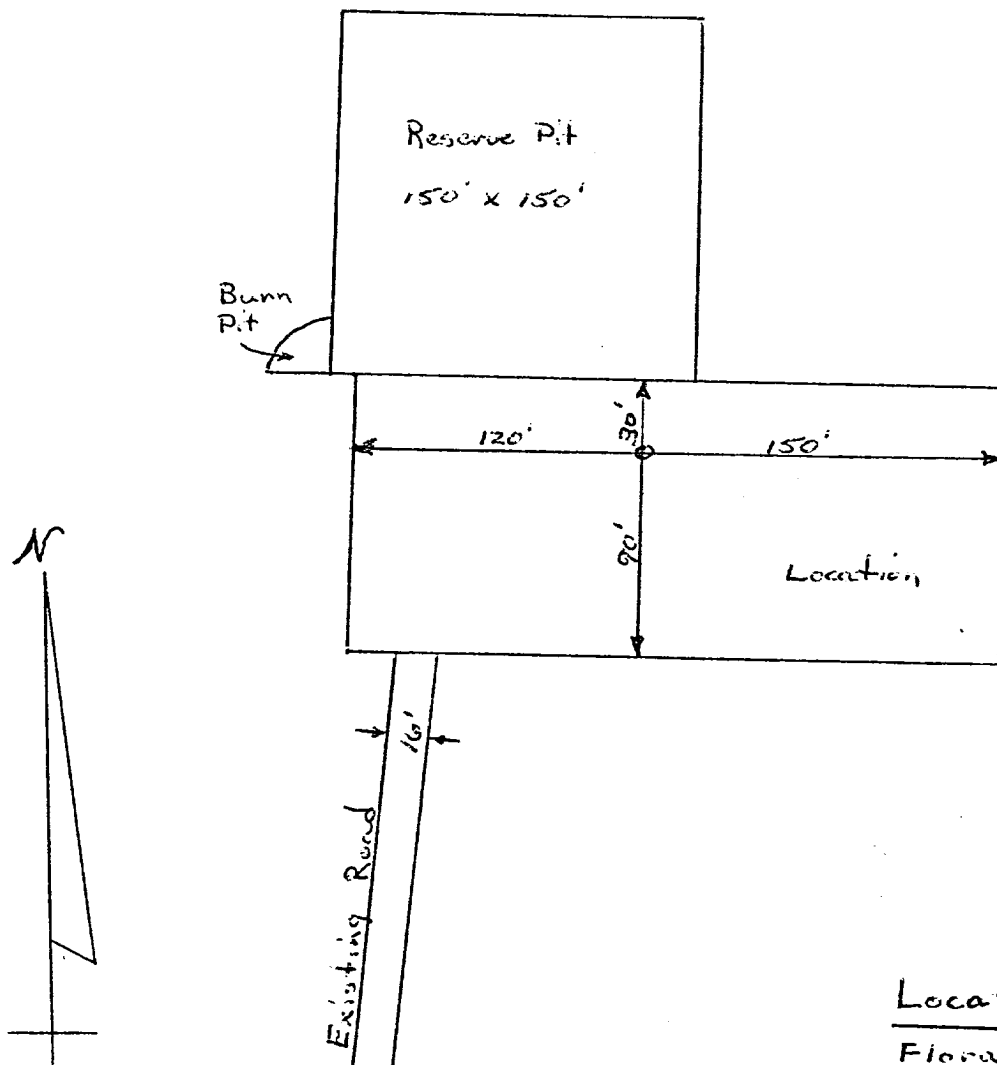
1. Shown on attached map.
2. No access roads are planned.
3. Shown on attached map.
4. Shown on attached map.
5. This is expected to be a dry gas well, therefore, a tank battery will not be required.
6. Water will be hauled from the San Juan River or nearest wash.
7. All waste material will be buried in reserve pit at time of location clean up.
8. No camps will be associated with this operation.
9. No airstrip will be built for this operation.
10. Shown on attached diagram.
11. Upon completion or abandonment of this well, the location will be cleaned and levelled and a dry hole marker placed, if applicable.
12. The location is sandy, rocky, typical for the area. Vegetation is sage brush, scrub oak and scrub cedar.



Vicinity Map for
Tenneco Oil Co.

Well location in the SE 1/4,
NW 1/4, Section 14, T30N
R8W, N.M.P.M., San Juan
County, New Mexico
Date: 25 July, 1915 Scale: 1"=6000'

San Juan Engineering Co.



Location Layout
 Florence 38-A
 1622 FNL $\frac{1}{2}$ 2010 FNL
 Sec. 14, T30N, R8W
 San Juan Co., N.M.

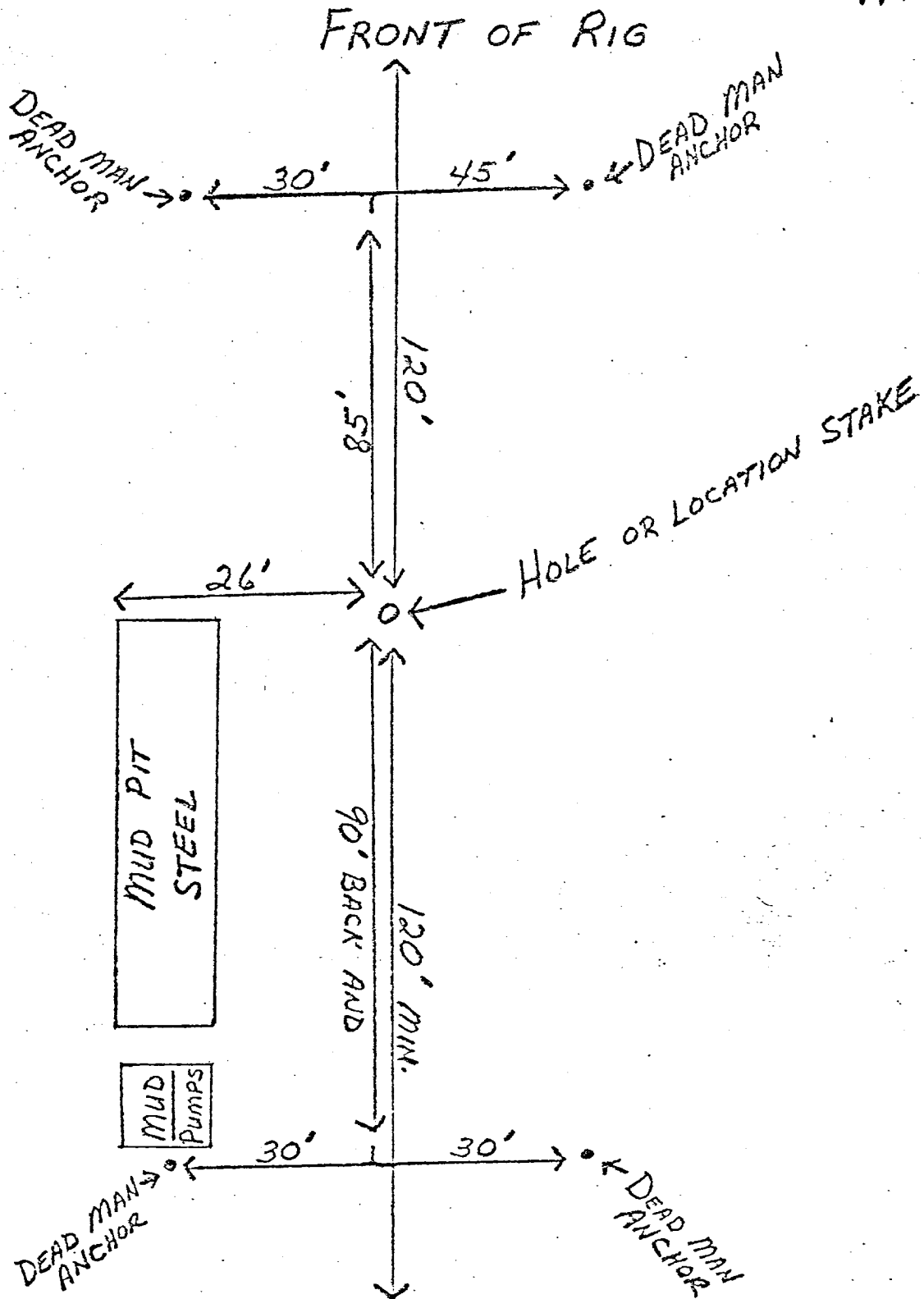
COLEMAN DRILLING CO.

P. O. BOX 1915

FARMINGTON, N. M. 87401

PHONE 505 / 323-0892

RIG #1



RESERVE PIT 150' X 150' X 5' DEEP

7. POINT WELL CONTROL PLAN

1. Surface casing: 9 5/8", 24#, approximately 200, grade K-55, new condition.
2. Casinghead will be 10", 900 Series, 3,000 psi rating.
3. Intermediate casing - 7", 20#, K-55, will be set at ±3600, and cemented to surface casing.
4. Blowout preventors: Hydraulic, double ram, 10". One set of rams will be provided for each size drill pipe in the hole. One set of blind rams at all times. Fill line will be 2", kill line will be 2", choke relief line will be 2" with variable choke.
5. Auxiliary equipment:
 - (1) Kelly cock will be in use at all times.
 - (2) Stabbing valve to fit drill pipe will be present on floor at all times.
 - (3) Mud monitoring will be visual, no abnormal pressures are anticipated in this area.
 - (4) Rotating head will be used when drilling with gas.
6. Anticipated bottom-hole pressure:

This is an area of known pressures. Maximum anticipated pressure at 5700' T.D. is 1000 psi.
7. Drilling Fluids:
 - 0 -200 Spud mud
 - 200- ~~3600~~ Gel water - low solids as needed to maintain good hole conditions
 - ~~3600~~-T.D. Compressed gas