

UNITED STATES
DEPARTMENT OF THE INTERIOR
GEOLOGICAL SURVEY

30-045-21889

APPLICATION FOR PERMIT TO DRILL, DEEPEN, OR PLUG BACK

1a. TYPE OF WORK

DRILL ☒DEEPEN ☐PLUG BACK ☐

b. TYPE OF WELL

OIL
WELL ☒GAS
WELL ☐

OTHER

SINGLE
ZONE ☐MULTIPLE
ZONE ☐

2. NAME OF OPERATOR

Walter Duncan

3. ADDRESS OF OPERATOR

Box 234, Farmington, NM 87401

4. LOCATION OF WELL (Report location clearly and in accordance with any State requirements.*)

At surface

1295' FNL - 100' FWL

At proposed prod. zone

14. DISTANCE IN MILES AND DIRECTION FROM NEAREST TOWN OR POST OFFICE*

8 miles east-southeast of Shiprock, NM

15. DISTANCE FROM PROPOSED*

LOCATION TO NEAREST
PROPERTY OR LEASE LINE, FT.
(Also to nearest drig. unit line, if any)

100'

16. NO. OF ACRES IN LEASE

320

17. NO. OF ACRES ASSIGNED
TO THIS WELL

2-1/2 40 joint

18. DISTANCE FROM PROPOSED LOCATION*

TO NEAREST WELL, DRILLING, COMPLETED,
OR APPLIED FOR, ON THIS LEASE, FT.

230'

19. PROPOSED DEPTH

730'

20. ROTARY OR CABLE TOOLS

Cable 0-20' Rotary 20-730'

21. ELEVATIONS (Show whether DF, RT, GR, etc.)

5046' GR

22. APPROX. DATE WORK WILL START*

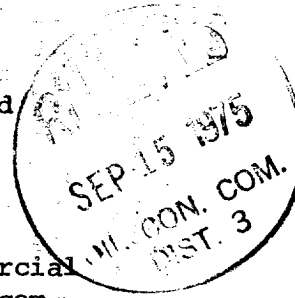
10-1-75

23.

PROPOSED CASING AND CEMENTING PROGRAM

SIZE OF HOLE	SIZE OF CASING	WEIGHT PER FOOT	SETTING DEPTH	QUANTITY OF CEMENT
	7"	20#	20'	5 SX
6-1/4"	4-1/2"	9.5#	720'	75 SX

1. Drive 7" surface csg through boulders with cable tools to 20' and cement to surface w/5 sx.
2. Drill 6-1/4" hole to top of Dakota formation and run 4-1/2" csg cemented w/75 sx
3. Drill 3-7/8" hole with air to test Dakota formation and if commercial oil production is indicated 2-3/8" tbg will be run and the well completed naturally.



IN ABOVE SPACE DESCRIBE PROPOSED PROGRAM: If proposal is to deepen or plug back, give data on present productive zone and proposed new productive zone. If proposal is to drill or deepen directionally, give pertinent data on subsurface locations and measured and true vertical depths. Give blowout preventer program, if any.

24.

SIGNED

Jim L. Jacobs

TITLE

Agent

DATE

9-10-75

(This space for Federal or State office use)

PERMIT NO.

APPROVAL DATE

APPROVED BY

TITLE

DATE

CONDITIONS OF APPROVAL, IF ANY:

*See Instructions On Reverse Side

**NEW MEXICO OIL CONSERVATION COMMISSION
WELL LOCATION AND ACREAGE DEDICATION PLAT**

Form C-102
Supersedes C-128
Effective 1-1-65

All distances must be from the outer boundaries of the Section.

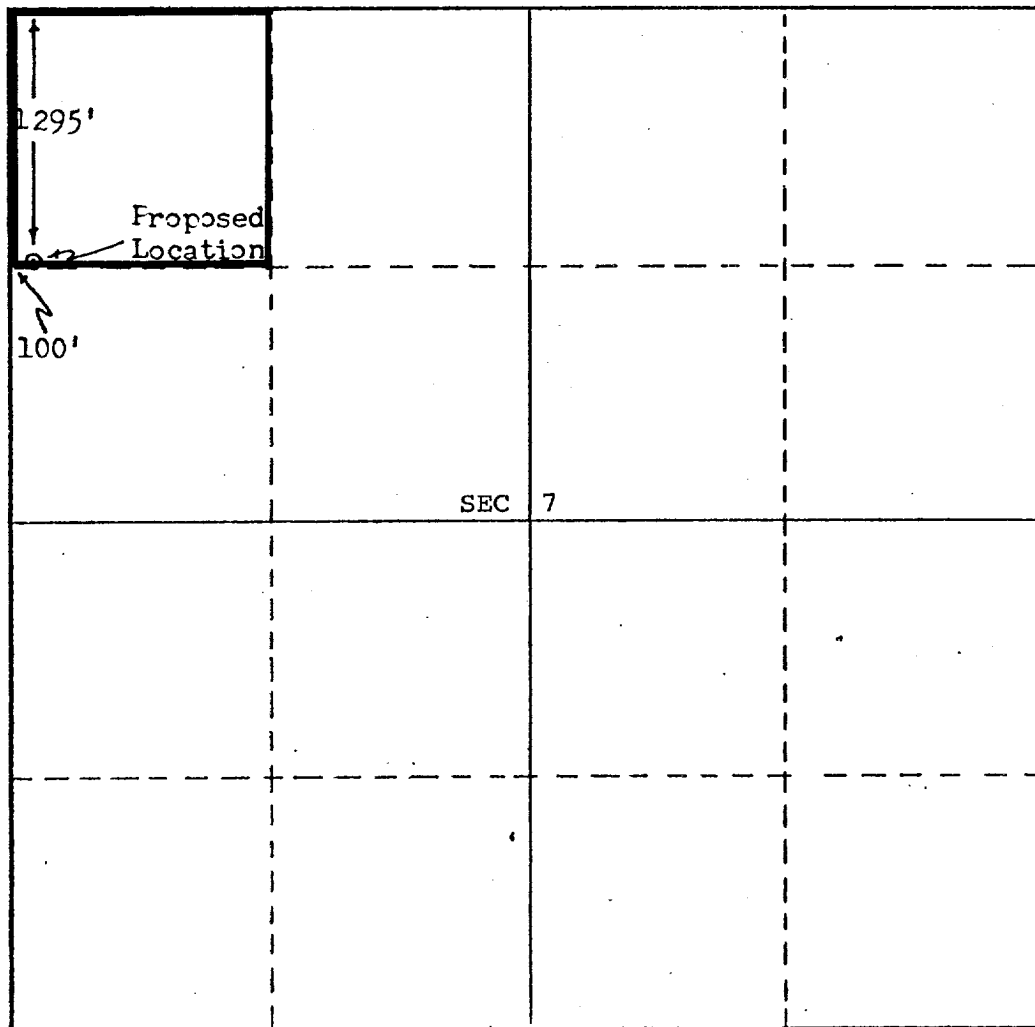
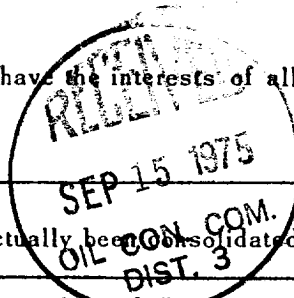
Operator Walter Luncan			Lease North Hogback		Well No. 7-116
Unit Letter D	Section 7	Township 29 North	Range 16 West	County San Juan	
Actual Footage Location of Well: 1295 feet from the North line and 100 feet from the West line					
Ground Level Elev. 5046	Producing Formation Dakota		Pool Slickrock Dakota ✓	Dedicated Acreage: Proration Unit: 40 Acres <i>Joint</i>	

1. Outline the acreage dedicated to the subject well by colored pencil or hachure marks on the plat below.
2. If more than one lease is dedicated to the well, outline each and identify the ownership thereof (both as to working interest and royalty).
3. If more than one lease of different ownership is dedicated to the well, have the interests of all owners been consolidated by communitization, unitization, force-pooling, etc?

☐ Yes ☐ No If answer is "yes," type of consolidation _____

If answer is "no," list the owners and tract descriptions which have actually been consolidated. (Use reverse side of this form if necessary.) _____

No allowable will be assigned to the well until all interests have been consolidated (by communitization, unitization, forced-pooling, or otherwise) or until a non-standard unit, eliminating such interests, has been approved by the Commission.



CERTIFICATION

I hereby certify that the information contained herein is true and complete to the best of my knowledge and belief.

Jim L. Jacobs
Name

Jim L. Jacobs

Position

Agent

Company

Walter Duncan

Date

9-10-75

I hereby certify that the well location shown on this plat was plotted from field notes of actual surveys made by me or under my supervision, and that the same is true and correct to the best of my knowledge and belief.

Sept. 2, 1975
Date Surveyed

Frederick H. Reed

Registered Professional Engineer
and/or Land Surveyor

Frederick H. Reed

Certificate No.

3795

