

UNITED STATES
DEPARTMENT OF THE INTERIOR
GEOLOGICAL SURVEY

APR 30-045-22025

APPLICATION FOR PERMIT TO DRILL, DEEPEN, OR PLUG BACK

1a. TYPE OF WORK

DRILL ☒DEEPEN ☐PLUG BACK ☐

b. TYPE OF WELL

OIL
WELL ☐GAS
WELL ☒

OTHER

SINGLE
ZONE ☒MULTIPLE
ZONE ☐

2. NAME OF OPERATOR

Tenneco Oil Company

3. ADDRESS OF OPERATOR

1860 Lincoln St., Suite 1200, Denver, Colorado 80203

4. LOCATION OF WELL (Report location clearly and in accordance with any State requirements.)*

At surface

1840' FNL and 1640' FWL

At proposed prod. zone

14. DISTANCE IN MILES AND DIRECTION FROM NEAREST POST OFFICE*

15. DISTANCE FROM PROPOSED*

LOCATION TO NEAREST
PROPERTY OR LEASE LINE, FT.

(Also to nearest drlg. unit line, if any)

18. DISTANCE FROM PROPOSED LOCATION
TO NEAREST WELL, DRILLING, COMPLETION
OR APPLIED FOR, ON THIS LEASE, FT.

21. ELEVATIONS (Show whether DF, RT, GR, etc.)

5761' GL

RECEIVED

MAR 26 1976

OIL CON. COM.
DIST. 3

16. NO. OF ACRES IN LEASE

320

19. PROPOSED DEPTH

4995'

17. NO. OF ACRES ASSIGNED
TO THIS WELL

W/320

20. ROTARY OR CABLE TOOLS

Rotary

Sec. 15, T30N, R8W

12. COUNTY OR PARISH
San Juan13. STATE
New Mexico22. APPROX. DATE WORK WILL START*
upon approval

23. PROPOSED CASING AND CEMENTING PROGRAM

SIZE OF HOLE	SIZE OF CASING	WEIGHT PER FOOT	SETTING DEPTH	QUANTITY OF CEMENT
12 1/4"	9 5/8"	36#	200' +	Suff. to circulate to surface.
8 3/4"	7"	23#	3050' +	Suff. to cement back to surface csq.
6 1/8"	4 1/2"	10.5#	2800 - 4995' +	Suff. to cement back to 7" csq.

Plan to drill well as follows:

1. MIRURT, drill 12 1/4" hole to +200'.
2. Set and cement 9 5/8" casing to + 200' & cement with suff. cement to circ. to surface
3. Drill out with 8 3/4" bit to + 3050 feet.
4. Run 7" casing and cement back to surface casing.
5. Drill out of 7" using gas as the circulating fluid, do not drill more than 10' below the 7" casing shoe until the hole has dried up completely and is dusting.
6. Drill the hole to T.D., log the hole dry as requested by drillsite geologist.
7. Run 4 1/2" liner to T.D., load hole with mud and cement liner back to top of 4 1/2". Set liner hanger and POH w/drill pipe.
8. This well will be completed through casing perforations and stimulated as necessary to establish commercial production.
9. Clean up area.

IN ABOVE SPACE DESCRIBE PROPOSED PROGRAM: If proposal is to deepen or plug back, give data on present productive zone and proposed new productive zone. If proposal is to drill or deepen directionally, give pertinent data on subsurface locations and measured and true vertical depths. Give blowout preventer program, if any.

24.

SIGNED

22 Parish

TITLE

Div. General Manager

DATE

3-24-76

(This space for Federal or State office use)

PERMIT NO.

APPROVAL DATE

APPROVED BY

TITLE

CONDITIONS OF APPROVAL, IF ANY:

Chal

*See Instructions On Reverse Side

U. S. GEOLOGICAL SURVEY

**NEW MEXICO OIL CONSERVATION COMMISSION
WELL LOCATION AND ACERAGE DEDICATION PLAT**

All distances must be from the outer boundaries of the Section

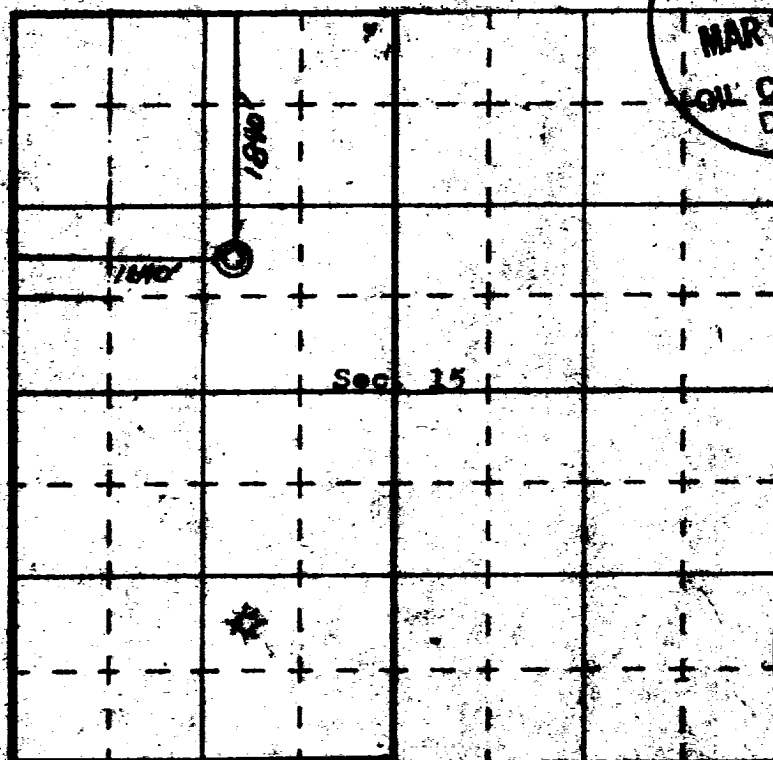
Operator TENNECO OIL COMPANY			Lease FLORANCE		Well No. 32-A
Unit Letter F	Section 15	Township 30 NORTH	Range 8 WEST	County SAN JUAN	
Actual Footage Location of Well: 1840 feet from the NORTH line and 1640 feet from the WEST line					
Ground Level Elev. 5261	Producing Formation Blanco Mesaverde		Pool Blanco Mesaverde	Dedicated Acreage 320	Acres 320

1. Outline the acreage dedicated to the subject well by colored pencil or hatchure marks on the plat below.
2. If more than one lease is dedicated to the well, outline each and identify the ownership thereof (both as to working interest and royalty).
3. If more than one lease of different ownership is dedicated to the well, have the interests of all owners been consolidated by communization, unitization, force-pooling, etc?

☒ Yes ☐ No If answer is "yes," type of consolidation **Communization**

If answer is "no," list the owners and tract descriptions which have actually consolidated. (Use reverse side of this form if necessary.)

No allowable will be assigned to the well until all interests have been consolidated (by communization, unitization, forced-pooling, or otherwise) or until a non standard unit, eliminating such interests, has been approved by the Commission.



CERTIFICATION

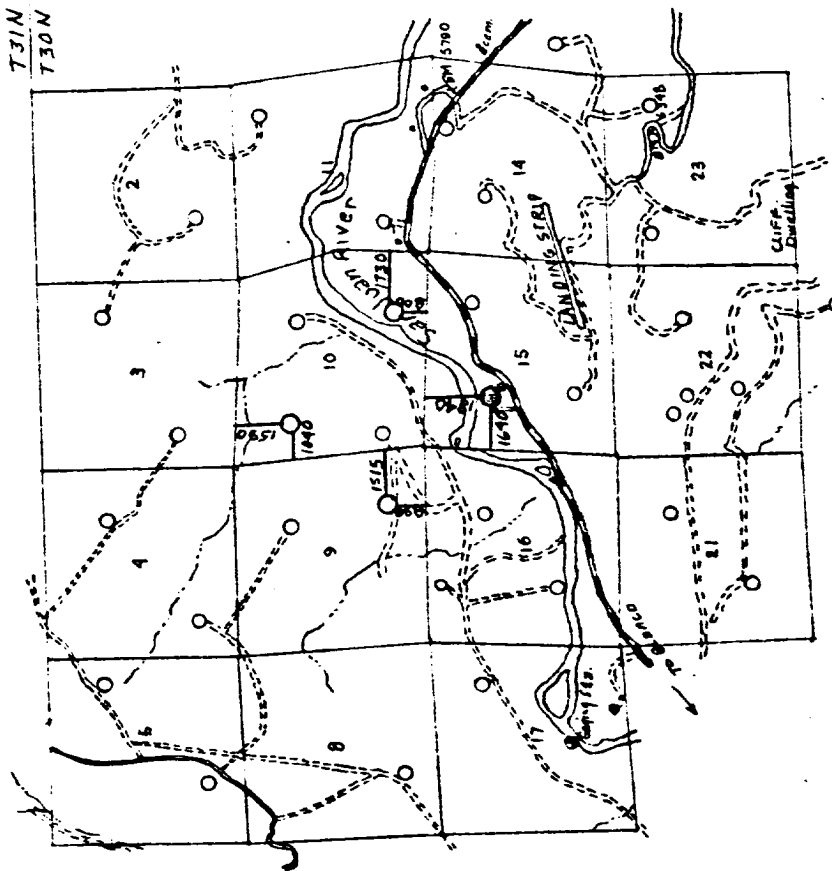
I hereby certify that the information contained herein is true and complete to the best of my knowledge and belief.

Name *Ted J. Drake*
 Position **Production Clerk**
 Company **Tenneco Oil Company**
 Date **3/23/76**

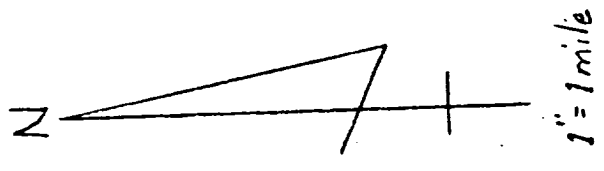
I hereby certify that the information shown on this plat was plotted from field notes of actual surveys made by me or under my supervision, and that the same is true and correct to the best of my knowledge and belief.

11 March, 1976
 Date Surveyed
[Signature]
 Registered Professional Engineer
 under Land Survey
James F. Lingo

1463
 Certificate No.



RECEIVED
MAR 26 1976
OIL CON. COM.
DIST. 3



Florence 32-A

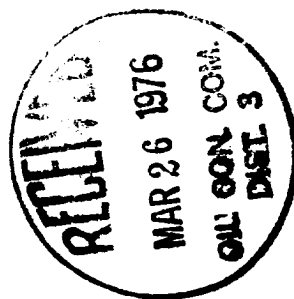
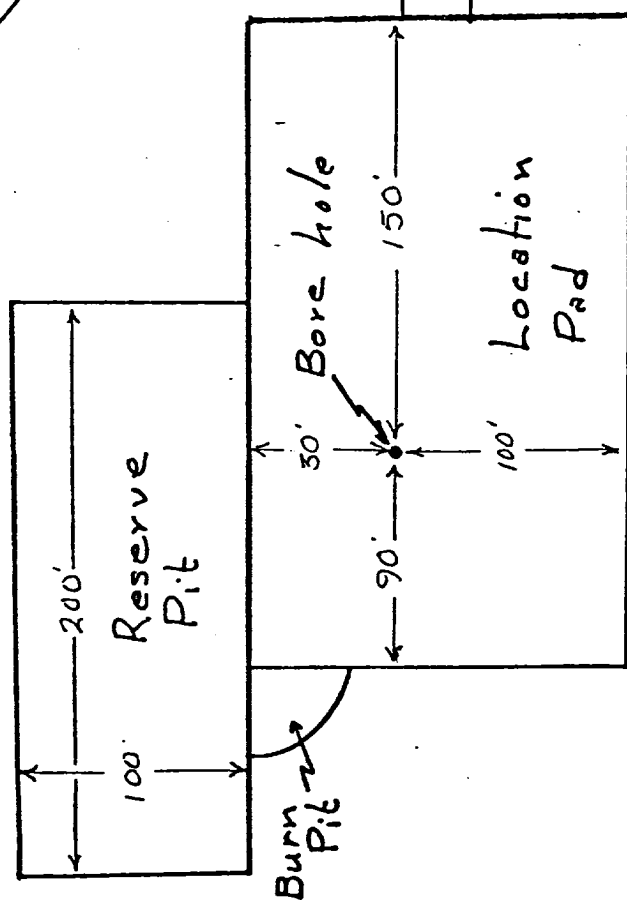
Vicinity Map for
Tenneco Oil Company
Showing
Well locations in SE 1/4 of Sec 9;
NW 1/4 of Sec 10; SE 1/4 of Sec 10; NW 1/4
of Sec 15; T30N, R8W, NMPM,
San Juan County, New Mexico
Scale: 1"=1 Mile
Date: 15 March 1976

San Juan Engineering Company
Farmington, New Mexico

R8W

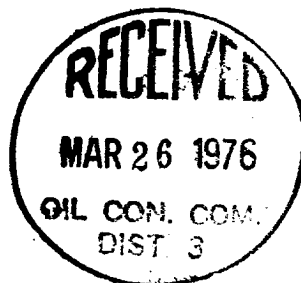
- Existing Roads
- - - Proposed Roads

RIG LAYOUT
Florence 32-A



Florance #32A
SURFACE USE PLAN

1. Shown on attached map.
2. Shown on attached map. Approximately 200' of 14' wide road will be required.
3. Shown on attached map.
4. Shown on attached map.
5. This is expected to be a dry gas well, therefore, a tank battery will not be required.
6. Water will be hauled from the San Juan River or nearest wash.
7. All waste material will be buried in reserve pit at time of location clean up.
8. No camps will be associated with this operation.
9. No airstrip will be built for this operation.
10. Shown on attached diagram.
11. Upon completion or abandonment of this well, the location will be cleaned and levelled and a dry hole marker placed, if applicable.
12. The location is sandy, rocky, typical for the area. Vegetation is sage brush, scrub oak, and scrub cedar.



Florance #32A
7 POINT WELL CONTROL PLAN

1. Surface casing: 9 5/8", 24#, approximately 200, grade K-55, new condition.
2. Casinghead will be 10", 900 Series, 3,000 psi rating.
3. Intermediate casing - 7", 20#, K-55, will be set at ± 3050' and cemented to surface casing.
4. Blowout preventors: Hydraulic, double ram, 10". One set of rams will be provided for each size drill pipe in the hole. One set of blind rams at all times. Fill line will be 2", kill line will be 2", choke relief line will be 2" with variable choke.
5. Auxiliary equipment:
 - (1) Kelly cock will be in use at all times.
 - (2) Stabbing valve to fit drill pipe will be present on floor at all times.
 - (3) Mud monitoring will be visual, no abnormal pressures are anticipated in this area.
 - (4) Rotating head will be used when drilling with gas.
6. Anticipated bottom-hole pressure:

This is an area of known pressure. Maximum anticipated pressure at 5700' T.D. is 1200 psi.
7. Drilling Fluids:

0 - 200' Spud mud

200- 3050' Gel water - low solids as needed to maintain good conditions.

3050'- T.D. Compressed gas

