

UNITED STATES
DEPARTMENT OF THE INTERIORGEOLOGICAL SURVEY **API 30-045-22119**

APPLICATION FOR PERMIT TO DRILL, DEEPEN, OR PLUG BACK

1a. TYPE OF WORK

DRILL ☒DEEPEN ☐PLUG BACK ☐

b. TYPE OF WELL

OIL
WELL ☐GAS
WELL ☒

OTHER

SINGLE
ZONE ☐MULTIPLE
ZONE ☐

2. NAME OF OPERATOR

Producing Royalties, Inc.

3. ADDRESS OF OPERATOR

Box 234, Farmington, NM 87401

4. LOCATION OF WELL (Report location clearly and in accordance with any State requirements.)*

At surface

1790' FNL - 1680' FWL

At proposed prod. zone

14. DISTANCE IN MILES AND DIRECTION FROM NEAREST TOWN OR POST OFFICE*

5 miles NW Bloomfield, NM

15. DISTANCE FROM PROPOSED*

LOCATION TO NEAREST

PROPERTY OR LEASE LINE, FT.

(Also to nearest drlg. unit line, if any)

1680'

16. NO. OF ACRES IN LEASE

17. NO. OF ACRES ASSIGNED

TO THIS WELL

160

18. DISTANCE FROM PROPOSED LOCATION*

TO NEAREST WELL, DRILLING, COMPLETED,
OR APPLIED FOR, ON THIS LEASE, FT.Approx
1/2 mile

19. PROPOSED DEPTH

2000'

20. ROTARY OR CABLE TOOLS

Rotary

21. ELEVATIONS (Show whether DF, RT, GR, etc.)

5790' GR

22. APPROX. DATE WORK WILL START*

8-1-76

23.

PROPOSED CASING AND CEMENTING PROGRAM

SIZE OF HOLE	SIZE OF CASING	WEIGHT PER FOOT	SETTING DEPTH	QUANTITY OF CEMENT
8-3/4"	7"	20#	60'	15 sx
4-3/4"	2-7/8"	6.5#	2000'	100 sx

Plan to drill well using slim-hole technique with minimum mud, set 2-7/8" tbg for csg thru Pictured Cliffs fm, selectively perforate, sand-water frac, clean out after frac, run 1-1/4" tbg, and complete well.

Do not plan to use BOP while drilling.

Plan to use master valve and stripper head while completing.

NMERB Requirement: Gas is not dedicated at this time.

IN ABOVE SPACE DESCRIBE PROPOSED PROGRAM: If proposal is to deepen or plug back, give data on present productive zone and proposed new productive zone. If proposal is to drill or deepen directionally, give pertinent data on subsurface locations and measured and true vertical depths. Give blowout preventer program, if any.

24. Thomas A. Dugan
SIGNED Thomas A. Dugan TITLE Engineer DATE 6-15-76
(This space for Federal or State office use)

PERMIT NO. _____ APPROVAL DATE _____

APPROVED BY _____ TITLE _____ DATE _____
CONDITIONS OF APPROVAL, IF ANY:

Okaf

*See Instructions On Reverse Side

NEW MEXICO OIL CONSERVATION COMMISSION
WELL LOCATION AND ACREAGE DEDICATION PLAT

Form C-102
Supersedes C-128
Effective 1-1-65

All distances must be from the outer boundaries of the Section.

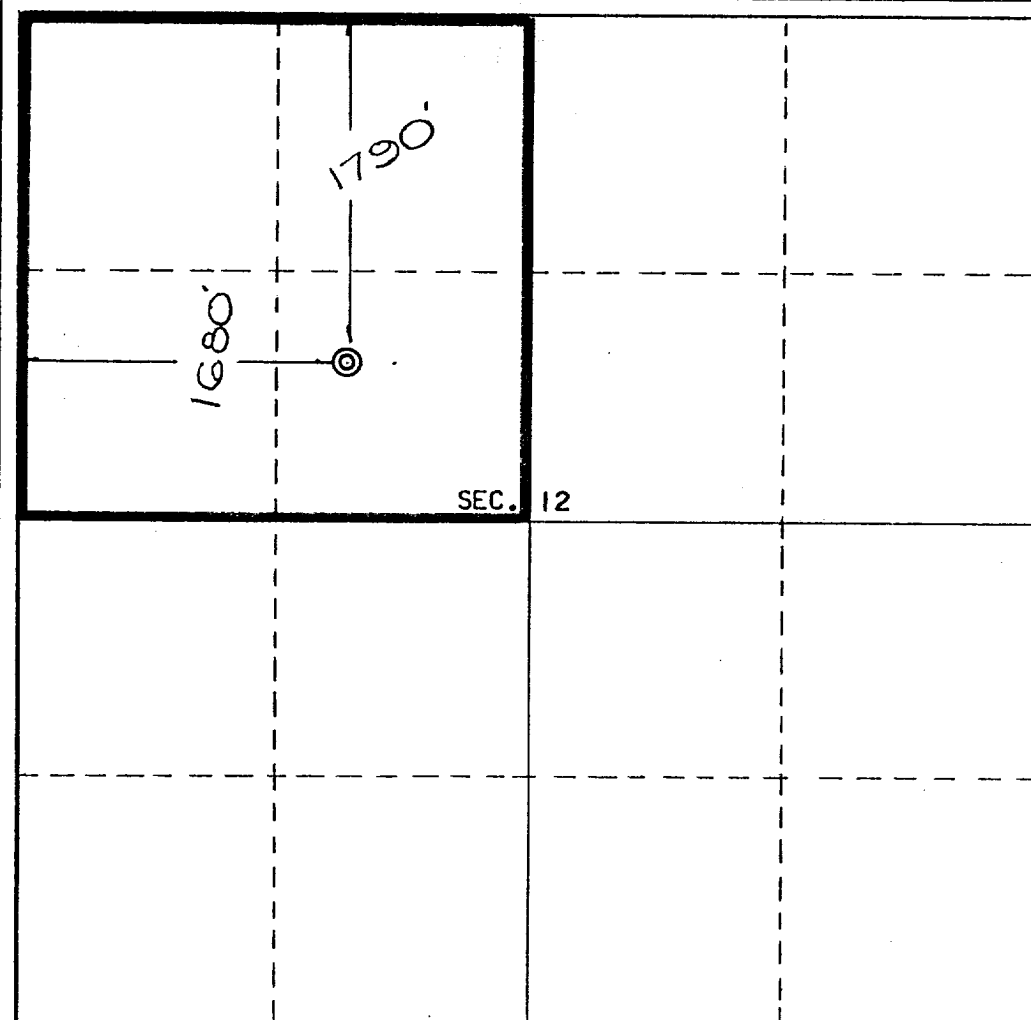
Producing Royalties, Inc.			Lease Payne		Well No. 2
Unit Letter F	Section 12	Township 29 North	Range 12 West	County San Juan	
Actual Footage Location of Well: 1790 feet from the North line and 1680 feet from the West line					
Ground Level Elev. 5790	Producing Formation Pictured Cliffs	Pool Fulcher Kutz	Dedicated Acreage: 160 Acres		

1. Outline the acreage dedicated to the subject well by colored pencil or hachure marks on the plat below.
2. If more than one lease is dedicated to the well, outline each and identify the ownership thereof (both as to working interest and royalty).
3. If more than one lease of different ownership is dedicated to the well, have the interests of all owners been consolidated by communitization, unitization, force-pooling, etc?

☐ Yes ☐ No If answer is "yes," type of consolidation _____

If answer is "no," list the owners and tract descriptions which have actually been consolidated. (Use reverse side of this form if necessary.) _____

No allowable will be assigned to the well until all interests have been consolidated (by communitization, unitization, forced-pooling, or otherwise) or until a non-standard unit, eliminating such interests, has been approved by the Commission.



CERTIFICATION

I hereby certify that the information contained herein is true and complete to the best of my knowledge and belief.

Thomas A. Dugan
Name
Thomas A. Dugan

Position
Engineer

Company
Producing Royalties, Inc.

Date
6-15-76

REGISTERED LAND SURVEYOR
STATE OF NEW MEXICO
I hereby certify that the well location shown on this plat was plotted from field notes of actual surveys made by me or under my supervision, and that the same are true and correct to the best of my knowledge and belief.
E.V. ECHOHAWK

Date Surveyed
April 9, 1976

Registered Professional Engineer
and/or Land Surveyor

E.V. Echhawk
Certificate No. 3602
E.V. Echhawk LS

